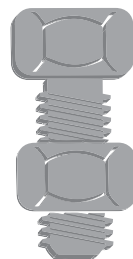


Husaini
Brothers



Fasteners specialist since 1968

PRODUCT CATALOGUE



Celebrating 52 Years of Excellence

Husaini Brothers



Fasteners specialist since 1968

Husaini & Brothers L.L.C

P.O.Box: 3990

28, 11 B, Street,

Al Quoz Ind. Area 1

Dubai - U.A.E

Tel.: +971 4 2274781

Website: www.husainibrothers.com

Email: sales@husainibrothers.com



ISO 9001: 2015 CERTIFIED COMPANY



WELCOME TO HUSAINI BROTHERS

Established in 1968, **Husaini Brothers** started as a trading business dealing in a range of building material items such as nails, machine screws and self-tapping screws. As the UAE and other GCC countries developed, **Husaini Brothers** progressed and diversified into specialized engineering and marine quality fasteners pertaining to various sectors such as the construction and steel structure industry, oil and petro-chemical industry, the automotive sector, shipbuilding, electrical and switch gear and the furniture industry.

It's legacy of over 50 years has allowed **Husaini Brothers** to become one of the leading stockist and trader of engineering fasteners in the Gulf region dealing in a variety of more than 2000 SKU's coming from reputed manufacturers located in USA, Europe and the Far east Asia.

At **Husaini Brothers**, quality and durability are of paramount importance when supplying to all industries. This is because even one low quality fastener can result in major losses and site delays proving to be very costly and time consuming. Moreover, we also believe in serving our customers with utmost urgency. In today's competitive world, we understand that our purchasers have limited time to submit tenders and we do our best to provide them with instant quotes for their fastener requirements.

At **Husaini Brothers**, we believe in supplying fasteners which are
"MADE TO LAST".

Website: www.husainibrothers.com

OUR BRANDS



ASTM A325 Bolts (Black & HDG), ASTM A490 Bolts, DIN 6914 Bolts (Black & HDG), 8.8 Hot Dip Galvanized/Black Bolts, F436 Washer, A56310S Nut, Threaded bars etc.



DIN 6914 Bolts (Black & HDG), DIN 6915 Nuts, DIN 6916 Washers, DIN 6917 Taper Washers (5 degrees), DIN 6918 Taper Washers (8 degrees).



Squirter® DTI' Washer



Grade 12.9 Allen Bolts (Socket Screw Bolt), Grade 10.9 Bolts, Grade 8.8 Bolts etc.



Sundram Fasteners Limited

Grade 12.9 Allen Bolts (Socket Screw Bolt), Grade 10.9 Bolts, Grade 8.8 Bolts etc.



Grade 304 | 316 Hex Bolts, Nut, Washer in Metric & Inch Size

OUR PRODUCTS

BOLTS



**DIN 912
Allen Bolt**

Grades: 10.9 | 12.9 | 316 | 304
Material: MS | GI | SS | Yellow
Thread Types: Metric | UNC | UNF



**DIN 7991
Allen CSK Bolt**

Grades: 10.9 | 12.9 | 316 | 304
Material: MS | GI | SS | Yellow
Thread Types: Metric | UNC | UNF



**DIN 7380
Button Head Allen Bolt**

Grades: 10.9 | 12.9 | 316 | 304
Material: MS | GI | SS | Yellow
Thread Types: Metric | UNC



**DIN 7984
Low Head Allen Bolt**

Grades: 8.8 | 316 | 304
Material: MS | GI | SS
Thread Types: Metric



Finneck Bolt

Grades: 8.8
Material: HDG
Thread Types: Metric



**DIN 6921
Flange Bolt**

Grades: 8.8 | 10.9 | 316 | 304
Material: MS | GI | SS | Yellow | DAC
Thread Types: Metric | UNC



**DIN 933 / 931
Hexagon Bolt**

Grades: 8.8 | 10.9 | 316 | 304
Material: MS | GI | SS | HDG | Yellow | Brass
Thread Types: Metric | M. fine | UNC | UNF



Heavy Hexagon Bolt

Grades: ASTM A325M
Material: MS | HDG
Thread Types: Metric | UNC



Heavy Hexagon Bolt

Grades: ASTM A490M
Material: MS
Thread Types: Metric



**Heavy Hexagon Bolt
(Friction Grip)**

Grades: ASTM 6914 (10.9)
Material: MS | HDG
Thread Types: Metric




**DIN 975/976-1
Threaded Rods**

Grades: 4.6 | 8.8 | 10.9 | 316 | 304 | B7
Material: MS | GI | HDG | SS | Brass | Nylon
Thread Types: Metric | UNC | UNF



**DIN 603
Carriage Bolt**

Grades: 8.8 | 316 | 304
Material: MS | GI | SS | HDG
Thread Types: Metric | UNC




Roofing Bolt

Grades: 316 | 304
Material: MS | GI | SS | HDG
Thread Types: Metric | UNC | UNF




**DIN 571
Coach Screw**

Grades: 316 | 304
Material: GI | SS
Thread Types: Metric | UNC



**DIN 444
Dog Bolt**

Grades: 316 | 304
Material: MS | GI | SS
Thread Types: Metric



**Dowel Screw
Coach & Stud**

Thread Types: Metric
Material: GI



**Wire Bolt With
Nut & Washer**

Grades : 316
Material: SS
Thread Types: Metric



**Eye Bolt With
2washer & Nut**

Grades : 316 | 304
Material: SS
Thread Types: Metric



**DIN 186B
T Bolt**

Grades: 4.6
Material: MS | GI
Thread Types: Metric



Track Shoe Bolt

Grades: 10.9
Material: MS
Thread Types: Metric | UNF



**DIN 939
1.25D Engineering Stud**

Grades: 8.8 | 316 | 304
Material: MS | GI | SS
Thread Types: Metric | UNC



**DIN 938
1D Engineering Stud**

Grades: 8.8 | 316 | 304
Material: MS | GI | SS
Thread Types: Metric | UNC



**DIN 835
2D Engineering Stud**

Grades: 8.8 | 316 | 304
Material: MS | GI | SS
Thread Types: Metric | UNC



Solar Fastener

Grades: 316 | 304
Material: SS
Thread Types: Metric



Certificate Of Registration

Awarded to

HUSAINI & BROTHERS LLC

at

P.O. BOX NO: 3990, GROUND FLOOR, SHOP NO: 1, AL SAFEER PLAZA, NAKHEEL ROAD, DEIRA,
DUBAI, UAE

Quality Registrar Systems certify that the management system of the above
organization has been audited and found to be in compliance with the QRS
requirements for registration of the management system standard detailed
below:

ISO 9001:2015

Quality Management Systems

Scope of work

TRADING OF ENGINEERING AND MARINE FASTENERS

Certificate No: DQU-11555
Originally Registered: 15 JAN 2018
Latest Issue: 15 JAN 2018
Valid up-to: 14 JAN 2021

Quality Registrar Systems



MANAGING OFFICE ADDRESS:
Quality Registrar Systems
P.O. Box: 126826
United Arab Emirates



Tel: +971-2-6714302
Fax: +971-2-6741449
www.qrsyt.com

WORLD WIDE CERTIFICATION



NUTS



Heavy Hexagon Nut

Grades: ASTM A194M
ASTM A563S | DIN 6915
Material: MS | HDG
Thread Types: Metric | UNC



2H Nut

Grades: 2H
Material: MS | HDG | GI
Thread Types: Metric | UNC



DIN 929 Hexagon Weld Nut

Grades: 8.8 | 316 | 304
Material: MS | GI | SS
Thread Types: Metric



DIN 6331 Hex Nut With Collar

Grades: 8.8 | 10.9 | 316 | 304
Material: MS | GI | SS | HDG | Yellow | Brass
Thread Types: Metric | M. fine | UNC | UNF



DIN 934 Hexagon Nut

Grades: 8.8 | 10.9 | 316 | 304 | Gr.5 | Gr.8
Material: MS | HDG | GI | SS | Yellow
Thread Types: Metric | UNC | UNF | BSW | BSF



DIN 985/982 Self Locking Nut

Grades: 8.8 | 10.9 | SS 316 | SS 304
Material: MS | GI | SS | Yellow
Thread Types: Metric | UNC | UNF | BSW



DIN 980 Full Steel Lock Nut

Grades: 8.8 | 10.9 etc.
Material: GI
Thread Types: Metric



DIN 6926 Self Locking Hexagon Flange Nut With Serration

Grades: 8.8 | 10.9 | 316 | 304
Material: MS | GI | SS | Yellow
Thread Types: Metric | UNC



DIN 1587 Cap Dome Nut

Grades: 8.8 | 316 | 304
Material: GI | SS | Nickel
Thread Types: Metric | UNC



DIN 986 Self Locking Hexagon Domed Cap Nut

Grades: 8.8 | 316 | 304
Material: GI | SS | Nickel
Thread Types: Metric | UNC



DIN 917 Hexagon Cap Nut

Grades: 8.8 | 316 | 304
Material: GI | SS | Nickel
Thread Types: Metric | UNC



DIN 6334 Hexagon Coupling / Long Nut

Grades: 8.8 | 316 | 304
Material: GI | SS | YELLOW
Thread Types: Metric | UNC | BSW



LN - Round Coupling

Grades: 8.8 etc.
Material: GI
Thread Types: Metric



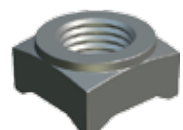
DIN 557 Square Nut

Grades: 8.8 | 316 | 304
Material: GI | SS
Thread Types: Metric



DIN 562 Square Thin Nut

Grades: 8.8 | 316 | 304
Material: GI | SS
Thread Types: Metric



DIN 928 Square Weld Nut

Grades: 8.8 etc.
Material: MS
Thread Types: Metric



DIN 936
Hexagon
Thin Nut, Medium

Grades: 8.8 | 316 | 304
Material: GI | SS
Thread Types: Metric | UNC



DIN 439
Hexagon Very Thin Nut

Grades: 8.8 | 316 | 304
Material: GI | SS
Thread Types: Metric | UNC



Cage Nut

Grades: 8.8 | 316 | 304
Material: MS | GI | SS | Yellow
Thread Types: Metric



NUT – Cylindrical
Cage Nut

Grades: 316 | 304
Thread Types: Metric



DIN 935
Castle Nut

Grades: 8.8 | 316 | 304
Material: MS | GI | SS | Yellow
Thread Types: Metric | UNC



DIN 937
Castle Nut

Grades: 8.8 | 316 | 304
Material: MS | GI | SS | Yellow
Thread Types: Metric | UNC



DIN 979
Castle Nut

Grades: 8.8 | 316 | 304
Material: MS | GI | SS | Yellow
Thread Types: Metric | UNC



DIN 315
Wing Nut

Grades: 316 | 304
Material: MS | GI | SS
Thread Types: Metric | UNC



NUT – Speed Nut

Grades: 4.6
Material: GI | Yellow
Thread Types: Metric



NUT – Teeth nut

Grade: 316 | 304
Material: MS | GI | SS
Thread Types: Metric



NUT – left thread nut

Grades: 8.8
Material: MS | HDG | GI
Thread Types: Metric



DIN 6923
Flange Nut Serrated

Grades: 8.8 | 10.9 | 316 | 304
Material: MS | GI | SS | Yellow
Thread Types: Metric | UNC



Nut – Rivet Nut
With Collar

Grades: 316 | 304
Material: GI | Yellow | SS
Thread Types: Metric



Nut – Rivet Nut
Without Collar

Grades: 316 | 304
Material: GI | Yellow | SS
Thread Types: Metric



DIN 7965
Slotted
Nut With Inserts

Grades: Normal
Material: GI | MS
Thread Types: Metric



DIN 7967
Pal Self
Locking Counter Nut

Grades : 316 | 304
Material: GI | SS
Thread Types: Metric



DIN 431
Pipe Nut

Grades: 316 | 304
Material: SS
Thread Types: BSP (British Standard Pipe)



X Rail Nut

Grades: 316 | 304
Material: GI | Yellow | SS
Thread Types: Metric



DIN 466
Knurled
Thumb Nuts

Grades: 316 | 304
Material : SS
Thread Types: Metric



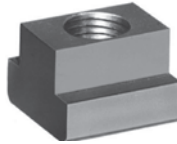
Nuts – Groove Nuts

Grades: 316 | 304
Material : SS
Thread Types: Metric



**DIN 546
Slotted
Round Nut**

Grades: 316 | 304
Material : SS
Thread Types: Metric



**DIN 508
T Slot Nut**

Grades: 8.8
Material: MS
Thread Types: Metric



**Nut – Slotted
Cross Dowel Type Q**

Grades: 4.6
Material: GI
Thread Types: Metric



**Nut – Hexagon Socket
Flat Head Cap Nut
Connector Nut**

Grades: Normal
Material: Nickel
Thread Types: Metric



**DIN 80701
Toggle Nut**

Grades: Normal
Material: Brass
Thread Types: Metric



**DIN 467
Knurled Thumb Nuts
Thin Type**

Grades: 316 | 304
Material : SS
Thread Types: Metric



**Nut – Insert Press
Nuts Hexagon**

Grades: 8.8 | 304
Material: GI | SS
Thread Types: Metric



Nut – Hammer Nut

Grades: 316 | 304
Material : SS
Thread Types: Metric



Shear Nut

Grades: 316 | 304
Material: MS | SS
Thread Types: Metric



**Nut – Comby Nut
With Conical
Washer**

Grades: 8.8
Material: GI
Thread Types: Metric



Nut – Weld On Nut

Grades: Normal
Material: MS
Thread Types: Metric



Bow Nut

Grades : 316 | 304
Material: SS
Thread Types: Metric



WASHERS



DIN 125
Washer Type A

Grades: 316 | 304
Material: MS | GI | SS | HDG | Yellow etc.
Size Measurements In: Metric | INCH



DIN 9021
OD – 3 X
Thread Diameter

Grades: 316 | 304
Material: GI | SS | etc.
Size Measurements In: Metric



DIN 6796
Conical
Spring Washer

Grades: 316 | 304
Material: GI | SS | HDG | Yellow etc.
Size Measurements In: Metric



NF E 25 511 Afnor
Serrated Conical
Contact Washers

Grades : 316 | 304
Material: GI | SS | HDG | Yellow
Size Measurements In: Metric



NF E 25 514 Afnor
Washers Type

Grades : 316 | 304
Material: GI | SS | HDG | Yellow
Size Measurements In: Metric



DIN 137
Wave Spring
Washer

Grades: 304
Material: SS | Yellow
Thread Types: Metric



DIN 2093
Disc Spring Washer

Size Measurements In: Metric
Material: MS



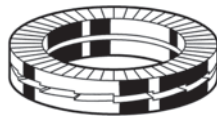
Safety Washers

Grades: 316 | 304
Material: GI | SS | MS
Size Measurements In: Metric



Schnorr Washers

Grades: 316 | 304
Material: GI | SS | MS
Size Measurements In: Metric



Nord Lock Washers

Size Measurements In: Metric
Material: HDG | Yellow | SS



DIN 6798
A Serrated
Lock Washers

Grades: 316 | 304
Material: GI | SS | MS
Size Measurements In: Metric



DIN 6798
J Serrated Lock Washer
Internal Teeth

Grades: 304
Material: GI | SS | MS
Size Measurements In: Metric



DIN 6798
V Serrated Lock Washer
External Teeth

Size Measurements In: Metric
Material: MS



DIN 6797
J Internal
Toothed Lock Washer

Grades: 304
Material: GI | SS
Size Measurements In: Metric



DIN 6797
A External
Toothed Lock Washer

Grades: 304
Material: GI | SS
Size Measurements In: Metric



Double Toothed
Lock Washer

Grades: 304
Material: GI | SS
Size Measurements In: Metric



**DIN 127
Spring
Washers**

Grades: 316 | 304
Material: GI | MS | SS | Yellow | HDG
Size Measurements In: Metric | INCH



**DIN 93
1 Tab**

Grades: 316 | 304
Material: MS | SS
Size Measurements In: Metric



**DIN 463
2 Tabs**

Grades: 316 | 304
Material: MS | SS
Size Measurements In: Metric



**DIN 432
Washers
With External Tab**

Grades: 304
Material: MS | SS
Size Measurements In: Metric



**DIN 436
Square Washer**

Grades: 316 | 304
Material: MS | SS | GI
Size Measurements In: Metric



**DIN 435 / 6918
Square Taper Washer**

Grades: 316 | 304
Material: MS | SS | GI | HDG
Size Measurements In: Metric



**DIN 434 / 6917
Square Taper Washer**

Grades: 316 | 304
Material: MS | SS | GI | HDG
Size Measurements In: Metric



**DIN 125
Plain
Nylon Washer**

Grades: Nylon (Teflon)
Size Measurements In: Metric



**DIN 9021
Nylon Falt Washer**

Grades: Nylon (Teflon)
Size Measurements In: Metric



**NF E 27-619
Turned Cup Washers**

Grades: 316 | 304
Material: SS
Size Measurements In: Metric



**NF E 27-619
Stamped Cup Washers**

Grades: 316 | 304
Material: SS
Size Measurements In: Metric



**Epdm Bonded
Sealing Washers
Neoprene**

Grades: 304
Material: GI | SS
Size Measurements In: Metric



Sealing Washer

Grades : 316 | 304
Material: SS
Size Measurements In: Metric



Starlock Washer

Grades: 304 etc.
Size Measurements In: Metric
Material: MS | SS



**Washer – Aet Sd
Washer Din 912 Bolts**

Grades: 316 | 304
Size Measurements In: Metric
Material: GI | SS | MS



**DIN 988
Shim Rings**

Size Measurements In: Metric
Material: MS



**Contact Teeth
Washer**

Size Measurements In: Metric
Material: GI | YELLOW | HDG



**DIN 7349
Pack Washers**

Grades: 316 | 304
Size Measurements In: Metric
Material: GI | SS | HDG



**DIN 7989
Falt Washer**

Size Measurements In: Metric
Material: HDG



DTI Washer

Grades: 8.8 | 10.9
Size Measurements In: Metric
Material: Mech. Galvanized | Black

SCREWS



DIN 7504 K
Hexagon Self
Drilling Screws

Grade: 316 | 304
Material: GI | SS
Thread Types: Metric



DIN 7504 P
Counter Sunk Self
Drilling Scr

Grade: 316 | 304
Material: GI | SS | MS
Thread Types: Metric



DIN 7504 N
Pan Head
Self Drilling Screw

Grade: 316 | 304
Material: GI | SS | MS
Thread Types: Metric



DIN 7976 C
Hexagon
Self Tapping Screw

Grade: 316 | 304
Material: GI | SS
Thread Types: Metric



DIN 6928
Hexagonal Washer Head
Self Tapping Screw

Grade: 316 | 304
Material: GI | SS
Thread Types: Metric



DIN 7982
Countersunk
Self Tapping Screw

Grade: 316 | 304
Material: GI | SS
Thread Types: Metric



DIN 7983
Oval Head
Self Tapping Screw

Grade: 316 | 304
Material: GI | SS
Thread Types: Metric



DIN 7981
Pan Head
Self Tapping Screw

Grade: 316 | 304
Material: GI | SS
Thread Types: Metric



DIN 965
Counter
Sunk Machine Screw

Grade: 316 | 304
Material: GI | SS
Thread Types: Metric



DIN 966
Oval Head
Machine Screw

Grade: 316 | 304
Material: GI | SS
Thread Types: Metric



DIN 7985
Pan Head
Machine Screw

Grade: 316 | 304
Material: GI | SS
Thread Types: Metric



DIN 84
Cheesehead
Machine Screw

Grade: 316 | 304
Material: GI | SS
Thread Types: Metric



DIN 86
Roundhead
Machine Screw

Grade: 316 | 304
Material: GI | SS
Thread Types: Metric



DIN 916
Grub Screw

Grades: 316 | 304
Material: GI | MS | SS
Thread Types: Metric | UNC | UNF | BSF



DIN 914
Cone Point Grub Screw

Grades: 316 | 304
Material: GI | MS | SS
Thread Types: Metric | UNC | UNF



Dog Point
Grub Screw

Grades: 316 | 304
Material: GI | MS | SS
Thread Types: Metric | UNC | UNF



**DIN 7997
Countersunk
Wood Screw**

Grades: 316 | 304
Material: GI | SS
Thread Types: Metric



**DIN 97
Countersunk
Wood Screw, Slotted**

Grades: 316 | 304
Material: GI | SS
Thread Types: Metric



**Torx Screw,
Countersunk Head**

Grades: 316 | 304
Material: GI | SS
Thread Types: Metric



Torx Screw, Pan Head

Grades: 316 | 304
Material: GI | SS
Thread Types: Metric



**Torx Screw,
Button Head**

Grade: 304
Material: SS
Thread Types: Metric



**DIN 7500 M
Taptite Screw
Countersunk Head**

Grades: 304
Material: GI | SS
Thread Types: Metric



**DIN 7500 C
Taptite Screw
Pan/cheese Head**

Grades: 304
Material: GI | SS
Thread Types: Metric



**DIN 7500 M
Torx Taptite Screw
Countersunk Head**

Grades: 304
Material: GI | SS
Thread Types: Metric



Socket Head Taptite

Grades: 304
Material: GI | SS
Thread Types: Metric



**Screw – Hammer
Drive Screw, U Type**

Material: Nickel
Thread Types: Metric



**Screw – Hex Slotted
Self Tapping Screw**

Grades: 316 | 304
Material: GI | SS
Thread Types: Metric



Chipboard Screws

Grades: 316 | 304
Material: MS | GI | SS
Thread Types: Metric



**DIN 18182-2
Drywall Screws**



Security Screws

HEAVY LOAD ATTACHMENTS



Anchor Bolt

Grades : 316 | 304
Material: GI | Yellow | SS
Thread Types: Metric



Rawl Bolt

Grades : 316 | 304
Material: GI | Yellow | SS
Thread Types: Metric



Sheer Stud

Material: MS
Thread Types: Metric



**L Shaped
Anchor Bolt**

Grades: 4.6 | 8.8
Material: GI | HDG
Thread Types: Metric



**J Shaped
Anchor Bolt**

Grades: 4.6 | 8.8
Material: GI | HDG
Thread Types: Metric



**Chemical
Anchor Bolt**

Grades: 316 | 304
Material: Yellow | SS
Thread Types: Metric

HOOK & EYE PRODUCTS



D Shackle

Grades : 316 | 304
Material: GI | SS
Thread Types: Metric



**Twisted Dee
Chain Shackle**

Grades : 316 | 304
Material: GI | SS
Thread Types: Metric



Long D Shackle

Grades : 316 | 304
Material: GI | SS
Thread Types: Metric



Wide D Shackle

Grades : 316 | 304
Material: GI | SS
Thread Types: Metric



Bow Shackle

Grades : 316 | 304
Material: GI | SS
Thread Types: Metric



**Turnbuckle,
Hook & Eye**

Grades : 316 | 304
Material: GI | SS
Thread Types: Metric



**Turnbuckle,
Eye And Eye**

Grades : 316 | 304
Material: GI | SS
Thread Types: Metric



**Turnbuckle,
Hook And Hook**

Grades : 316 | 304
Material: GI | SS
Thread Types: Metric



**Turnbuckle,
Jaw And Jaw**

Grades : 316 | 304
Material: GI | SS
Thread Types: Metric



Swivel Eye And Eye

Grades : 316 | 304
Material: GI | SS
Thread Types: Metric



**Swivel, Jaw
And Jaw**

Grades : 316 | 304
Material: GI | SS
Thread Types: Metric



Swivel Eye And Jaw

Grades : 316 | 304
Material: GI | SS
Thread Types: Metric



Screw Eyes

Grades : 316 | 304
Material: GI | SS
Thread Types: Metric



U Bolt

Grades : 316 | 304
Material: GI | SS
Thread Types: Metric



**Heavy Duty
Eye Bolt**

Grades : 316 | 304
Material: SS
Thread Types: Metric



Eye Bolt

Grades : 304
Material: GI | SS
Thread Types: Metric



**DIN 580
Lifting Eye Bolt**

Grades : 316 | 304
Material: GI | MS | SS
Thread Types: Metric | UNC



Hooks – Eb Welded

Grades : 316 | 304
Material: GI | SS
Thread Types: Metric



Ring Eye Bolt

Grades : 316 | 304
Material: GI | SS
Thread Types: Metric



**DIN 582
Lifting Eye Nut**

Grades : 316 | 304
Material: GI | MS | SS
Thread Types: Metric | UNC



Wire Rope Clip

Grades : 316 | 304
Material: GI | SS
Thread Types: Metric | UNC



Thimble

Grades : 316 | 304
Material: GI | SS
Thread Types: Metric



Round Ring

Grades : 316 | 304
Material: GI | SS
Thread Types: Metric



Snap Carbine Hook

Grades : 316 | 304
Material: GI | SS
Thread Types: Metric



**Hooks – Snap
Carbine Hook, SI**

Grades : 316 | 304
Material: GI | SS
Thread Types: Metric



**Hooks – Snap
(Carbine) Hook, Se**

Grades : 316 | 304
Material: GI | SS
Thread Types: Metric



**Spring Hook
With Eyelet**

Grades : 316 | 304
Material: SS
Thread Types: Metric



**Lock Spring Hook With
Eyelet / Safety Latch**

Grades : 316 | 304
Material: SS
Thread Types: Metric



Spring Snap

Grades : 316 | 304
Material: SS
Thread Types: Metric



Rigid Eye Snap

Grades : 316 | 304
Material: SS
Thread Types: Metric



**Snap Shackle
Fixed Eye**

Grades : 316 | 304
Material: SS
Thread Types: Metric



Swivel Eye Bolt Snap

Grades : 316 | 304
Material: SS
Thread Types: Metric



Diamond Pad

Grades : 316 | 304
Material: SS
Thread Types: Metric



Square Pad

Grades : 316 | 304
Material: SS
Thread Types: Metric



**Square Pad
Swivel Eye**

Grades : 316 | 304
Material: SS
Thread Types: Metric



Round Pad

Grades : 316 | 304
Material: SS
Thread Types: Metric



Oblong Pad

Grades : 316 | 304
Material: SS
Thread Types: Metric



**Square Pad
With Ring**

Grades : 316 | 304
Material: SS
Thread Types: Metric



Ring Catch

Grades : 316 | 304
Material: SS
Thread Types: Metric



Dee Ring Welded

Grades : 316 | 304
Material: SS
Thread Types: Metric



Rope Cleat

Grades : 316 | 304
Material: SS
Thread Types: Metric



Quick Link

Grades : 316 | 304
Material: SS
Thread Types: Metric



Cover Latch

Grades : 316 | 304
Material: SS
Thread Types: Metric



Cover Latch Casting

Grades : 316 | 304
Material: SS
Thread Types: Metric



Square Hook

Material: GI
Thread Types: Metric



S Hook

Grades : 304
Material: SS
Thread Types: Metric



**Saddle Clip /
Eye Strap**

Grades: 316 | 304
Material: GI | SS
Size Measurements In: Metric



Door Hook

Grades : 304 etc.
Material: SS
Thread Types: Metric



Cup Hook

Grades : 304
Material: SS
Thread Types: Metric



Low Flat Cleat

Grades : 316
Material: SS
Thread Types: Metric



Pad Eye

Grades : 316 | 304
Material: SS
Thread Types: Metric



**Pelican Hook
(With Link)**

Grades : 316 | 304
Material: SS
Thread Types: Metric

RIVETS, PIN & INSERTS



DIN 472
Retaining Rings
Internal Circlip

Grades: 304.
Material: MS | SS



DIN 471
Retaining Rings
External Circlip

Grades: 304.
Material: MS | SS



DIN 6799 E
Style External
Retaining Ring

Grades: 304.
Material: MS | SS



DIN 94
Cotter (Split) Pin

Grades : 316 | 304
Material: GI | SS



DIN 11024
R PIN

Grades : 316 | 304
Material: GI | SS | Yellow



DIN 11024 R
Pin Double Ring

Grades : 304
Material: GI | SS | Yellow



DIN 1434
Clevis Pin

Grades : 316 | 304
Material: SS



DIN 1481
Spring Dowel Pin

Grades: 304
Size: Metric
Material: MS | SS



DIN 7
Dowel
(Cylindrical) Pin

Size: Metric
Material: MS



DIN 662
Round Head Rivet

Grades: 304
Size: Metric
Material: MS | SS | Aluminum



DIN 664
Flat Round Head Rivet

Size: Metric
Material: Aluminum



Self Tapping
Threaded Inserts

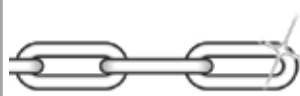
Grades: 304
Material: Yellow | SS
Thread Types: Metric

OTHER PRODUCTS



DIN 301
Hose Clamps With
Worm Gear Drive Type A

Grades: 316 | 304.
Material: GI | SS
Thread Types: Metric



DIN 763
Chain Long Link

Grades: 316 | 304
Material: GI | SS
Thread Types: Metric



DIN 766
Chain Short Link

Grades: 316 | 304
Material: GI | SS
Thread Types: Metric



Door Hinge, Equal

Grades: 316 | 304
Thread Types: Metric



**Door Hinge,
Unequal**

Grades: 316 | 304 etc.
Thread Types: Metric



**Flush Door Hinges
Equal**

Grades : 316 | 304 etc.
Thread Types: Metric



Butt Hinge

Grades: 316 | 304
Thread Types: Metric



**Din 6336 K
Star Grip,
Type K, Knob Bolt**

Material : Plastic
Thread Types: Metric



**DIN 6336
L Star Grip,
Type L Knob Bolt**

Material : Plastic
Thread Types: Metric



Turning Knob

Material : Plastic
Thread Types: Metric



Five Lobe Grip

Material : Plastic
Thread Types: Metric



Disc Knob

Material : Plastic
Thread Types: Metric



**Wire Rope,
Steel Core**

Grades: 316 | 304
Material: GI | SS



Wire Rope, Pvc Coated

Grades: 316 | 304
Material: GI | SS



Staple Pins

Material: Mild Steel



**DIN 906
Hexagon
Socket Plug**

Grades: 316 | 304
Material: MS | SS
Thread Types: NPT | BSP



**DIN 908
Hexagon Socket Screw
Plug With Collar**

Grades: 316 | 304
Material: MS | SS
Thread Types: NPT | BSP



**DIN 910
Hexagon Head Flanged
Screw Plug**

Grades: 316 | 304
Material: MS | SS
Thread Types: NPT | BSP



Plastic Dome Caps

Thread Types: Metric
Material : Plastic



Tube Cap, Circular

Thread Types: Metric
Material : Plastic



Tube Cap, Conical

Material : Rubber
Thread Types: Metric



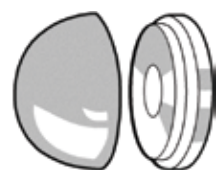
Tube Cap, Square

Material : Plastic
Thread Types: Metric



**Tube Cap,
Rectangular**

Material : Plastic
Thread Types: Metric



Screw Cap

Material : Plastic
Thread Types: Metric

OUR PROJECTS

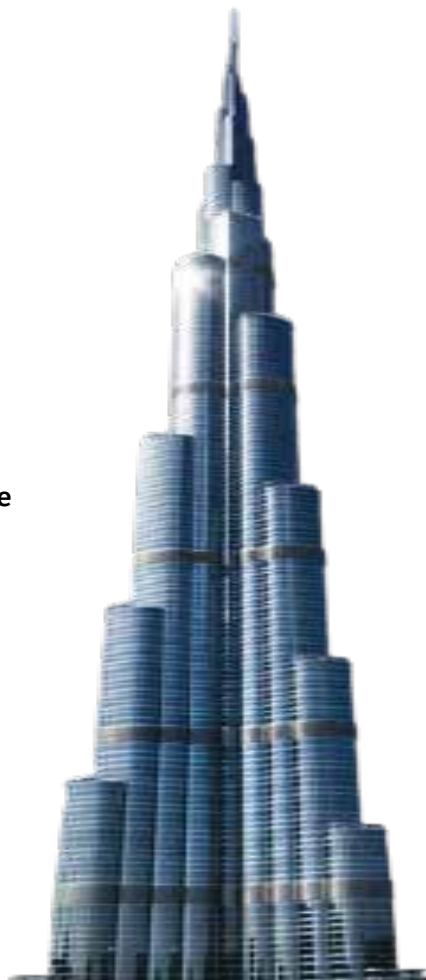


Maqta Bridge (Abu Dhabi)



Shk Zayed University

The Burj Khalifa building is made up of two different types of structures. All floors below 150 are made of the traditional concrete structure. However, floor number 156 to the top is entirely steel structures to which Hussaini Brothers has had the privilege of supplying High Strength Friction Grip bolts.



Burj Khalifa

Hussaini Brothers has supplied a range of 10.9 grade bolts to Burj Khalifa, an 830m-tall tower. Specifically, a range of ASTM A490M grade bolts, nuts and washers were supplied ranging in diameters from M16 to M36.



Dubai International Airport & Maktoum International Airport



Dubai Metro



Sohar Port

OUR INDUSTRIES



Construction & Structural Steel Industry



Oil & Petrochemical Industries



Automotive Sector



Ship Building



Electrical Switchgear



Furniture

ASSORTED PRODUCT RANGE

BOLTS

ASTM A325/A490 / 6914(10.9)	HEAVY HEX BOLT
DIN 912 / 7984 / 6912	ALLEN BOLT / LOW HEAD ALLEN BOLT
DIN 7991	CSK ALLEN BOLT
ISO 7380-1	BUTTON HEAD ALLEN BOLT
ISO 7380-2	FLANGE BUTTON HEAD ALLEN
DIN 6921	FLANGE BOLT
DIN 933 / 931	HEX BOLT METRIC / UNC / UNF / BSW / BSF
DIN 603	CARRIAGE BOLT / FINNECK BOLT
ART - NFE25-129	ROOFING BOLT
DIN 571	COACH BOLT (SCREW)
DIN 444 / 186B	DOG BOLT / T BOLT

WASHERS

DIN 6916	STRUCTURAL WASHER
	SQUIRTER DTI WASHER
DIN 125 / 9021	PLAIN WASHER / BIG OD WASHER
DIN 6796	CONICAL SPRING WASHER
	AFRON SERRATED CONICAL WASHER TYPE M
DIN 137	WAVE WASHER
DIN 2093	DISC WASHER
	SAFETY WASHER /SCHNORR/NORD WASHER
DIN 6798 / 6797	SERRATED TOOTH WASHER
DIN 127	SPRING WASHER
DIN 93 / 463	1 TAB WASHER / 2 TABS WASHER
DIN 432	EXTERNAL TAB WASHER
DIN 436	SQUARE WASHER
DIN 434 / 6917-18	SQUARE WASHER TAPPER
	TURNED WASHER (CUP,STAMPED)
	NEOPRENE WASHER
	SEALING WASHER
	PACK WASHER
	STARLOCK WASHER
	SERRATES WASHER FOR DIN 912 BOLTS

SCREWS

DIN 7504	SELF DRILLING SCREW(HEX HEAD,CSK+,PAN+)
DIN 7981/7982/7983	SELF TAPPING SCREW (PAN+,CSK+,OVAL+)
DIN 6928	SELF TAPPING HEX WASHER HEAD
DIN 965,966,7985,84,86	MACHINE SCREW (CSK+,OVAL,PAN+,C.HEAD-ROUND HEAD)
DIN 916 / 914 / 915	GRUB SCREW
DIN 7997 / 97	WOOD SCREW CSK+ / CSK-
	TORX SCREW (CSK,PAN HEAD,BUTTON HEAD)
DIN 7500	TAPTITE SCREW (CSK+,PAN HEAD,CSK TORX)
	SECURITY SCREW / CHIP BOARD SCREW
	HAMMER DRIVE SCREW U TYPE
DIN 18182-2	DRYWALL SCREW

NUTS

DIN 6915 / A563 10S / 2H	HEAVY NUTS
DIN 929 / 928	WELD NUT HEX / SQUARE
DIN 6331	WHEEL NUT / LUG NUT WITH COLLAR
DIN 934	HEX NUT CL8-CL10
DIN 985 / 982	LOCK NUT (LOW / HIGH)
DIN 980	STEEL LOCK NUT
DIN 6923	FLANGE NUT SERRATED
DIN 6926	LOCK FLANGE NUT WITH SERRATION
DIN 1587 / 917	DOME NUT / CAP NUT
DIN 6334	LONG NUT
DIN 557 / 562	SQUARE NUT / SQUARE NUT THIN
DIN 439 / 935	CHECK NUT / CASTLE NUT
DIN 80704 / 7965	CAGE NUT / RAMPA NUT
DIN 315 / 80701	WING NUT / TOGGLE NUT
DIN 7967	PAL-SELF LOCKING COUNTER NUT
	LEFT THREAD NUT

HEAVY LOAD ATTACHMENT

ANCHOR BOLT 4.6 , 8.8	L SHAPED ANCHOR BOLT 4.6,8.8
RAWL BOLT	FOUNDATION BOLT
SHEER STUD	CHEMICAL ANCHO BOLT

THREAD ROD & STUD

DIN 975	THREAD ROD (MM/UNC/UNF/BSW)
DIN 976	STUDS FULL THREAD
DIN 938 / 939	ENGINEERING STUD

HOOK & EYE PRODUCTS

BOW SHACKLE	HEAVY DUTY EYE BOLT
TURN BUCKLE	EYE BOLT (OPEN,CLOSE)
SWIVEL EYE & JAW	LIFTING EYE BOLT & NUT
U BOLT	SADDLE CLIP / WIRE ROPE CLIP
D SHACKLE	HOOK (SQUARE,EYE,OPEN,S)
THIMBLE	DOOR HOOK / SNAP HOOK

RIVETS,PINS & INSERTS

DIN 94 / 11024	COTTER PIN (SPLIT PIN) / R PIN
DIN 1481	DOWEL PIN
DIN 660 / 662	ROUND HEAD / FLAT HEAD RIVET
	SELF TAPPING THREAD INSERT

OTHER THINGS

DIN 766 / 763	CHAIN (SHORT & LONG LINK)
DIN 6336	STAR KNOB (TYPE K,TYPE L)
DIN 906 / 908 / 910	PLUG
	WIRE ROPE (STEEL/PVC COTTED)
	PLASTIC DOME CAP
	DOOR HINGES / BUTT HINGES

OUR BRANCHES

Deira Branch:

Naif Road, Al Nakheel Street

Al Safeer Plaza, Shop No-1

Ground Floor - Dubai

Tel: +971 4 2223024 / 2231411

Email: deirasales@husainibrothers.com

Al Quoz Headquarters:

28 11 B St - Al Quoz Ind. Area 1 - Dubai

Tel: +971 4 2274781, P.O.Box: 3990

Website: www.husainibrothers.com

Email: sales@husainibrothers.com

Jaddaf Branch:

Al Jaddaf Ship Docking Yard

Gate1 Shop no.4,

Creek metro station - Dubai

Tel: +971 4 3243761, Fax: +971 4 3241137

Email: sales@husainibrothers.com

Husaini Brothers



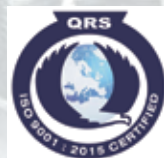
Fasteners specialist since 1968

Husaini & Brothers L.L.C

P.O.Box: 3990
28, 11 B, Street,
Al Quoz Ind. Area 1
Dubai - U.A.E
Tel.: +971 4 2274781

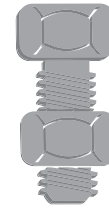
Website: www.husainibrothers.com

Email: sales@husainibrothers.com



ISO 9001: 2015 CERTIFIED COMPANY

Husaini
Brothers



Fasteners specialist since 1968

PRODUCT CATALOGUE

STRUCTURAL BOLTS

When you
really need
to **hold**
it together!



Celebrating 52 Years of Excellence



WELCOME TO HUSAINI BROTHERS

Established in 1968, **Husaini Brothers** started as a trading business dealing in a range of building material items such as nails, machine screws and self-tapping screws. As the UAE and other GCC countries developed, **Husaini Brothers** progressed and diversified into specialized engineering and marine quality fasteners pertaining to various sectors such as the construction and steel structure industry, oil and petro-chemical industry, the automotive sector, shipbuilding, electrical and switch gear and the furniture industry.

It's legacy of over 50 years has allowed **Husaini Brothers** to become one of the leading stockist and trader of engineering fasteners in the Gulf region dealing in a variety of more than 2000 SKU's coming from reputed manufacturers located in USA, Europe and the Far east Asia.

At **Husaini Brothers**, quality and durability are of paramount importance when supplying to all industries. This is because even one low quality fastener can result in major losses and site delays proving to be very costly and time consuming. Moreover, we also believe in serving our customers with utmost urgency. In today's competitive world, we understand that our purchasers have limited time to submit tenders and we do our best to provide them with instant quotes for their fastener requirements.

At **Husaini Brothers**, we believe in supplying fasteners which are
"MADE TO LAST".

Website: www.husainibrothers.com



Cooper & Turner Ltd

STRUCTURAL

ASTM A325M
HEAVY HEX STRUCTURAL
BOLTING ASSEMBLIES (METRIC)
(A325M BOLT, A563M NUT & F436M WASHER)

A 325M BOLT DIMENSIONS

Thread d		M16	M20	M22	M24	M27	M30	M36
P pitch of thread		2	2.5	2.5	3	3	3.5	4
b	Bolt ≤100	31	36	38	41	44	49	56
	Bolt > 100	38	43	45	48	51	56	63
ds	min.	15.30	19.16	21.16	23.16	26.16	29.16	35.00
	max.	16.70	20.84	22.84	24.84	27.84	30.84	37.00
s	min.	26.16	33.00	35.00	40.00	45.00	49.00	58.80
	max.	27.00	34.00	36.00	41.00	46.00	50.00	60.00
e	min.	29.56	37.29	39.55	45.20	50.85	55.37	66.44
	max.	31.18	39.26	41.57	47.34	53.12	57.74	69.28
dw ¹⁾	min.	24.9	31.4	33.3	38.0	42.8	46.5	55.9
k ¹⁾	min.	6.5	8.1	9.2	9.9	11.3	12.4	15.0
k	min.	9.25	11.60	13.10	14.10	16.10	17.65	21.45
	max.	10.75	13.40	14.90	15.90	17.90	19.75	23.55
c	min.	0.4	0.4	0.4	0.4	0.4	0.4	0.4
	max.	0.8	0.8	0.8	0.8	0.8	0.8	0.8
da	max.	18.2	22.4	24.4	26.4	30.4	33.4	39.4
r	min.	0.6	0.8	0.8	1.0	1.2	1.2	1.5

¹⁾ The maximum value of dw shall not exceed the actual width across flats

MATERIALS

Medium carbon, carbon boron, medium carbon alloy or alloy boron steel in accordance with ASTM A325M.

CHARACTERISTIC

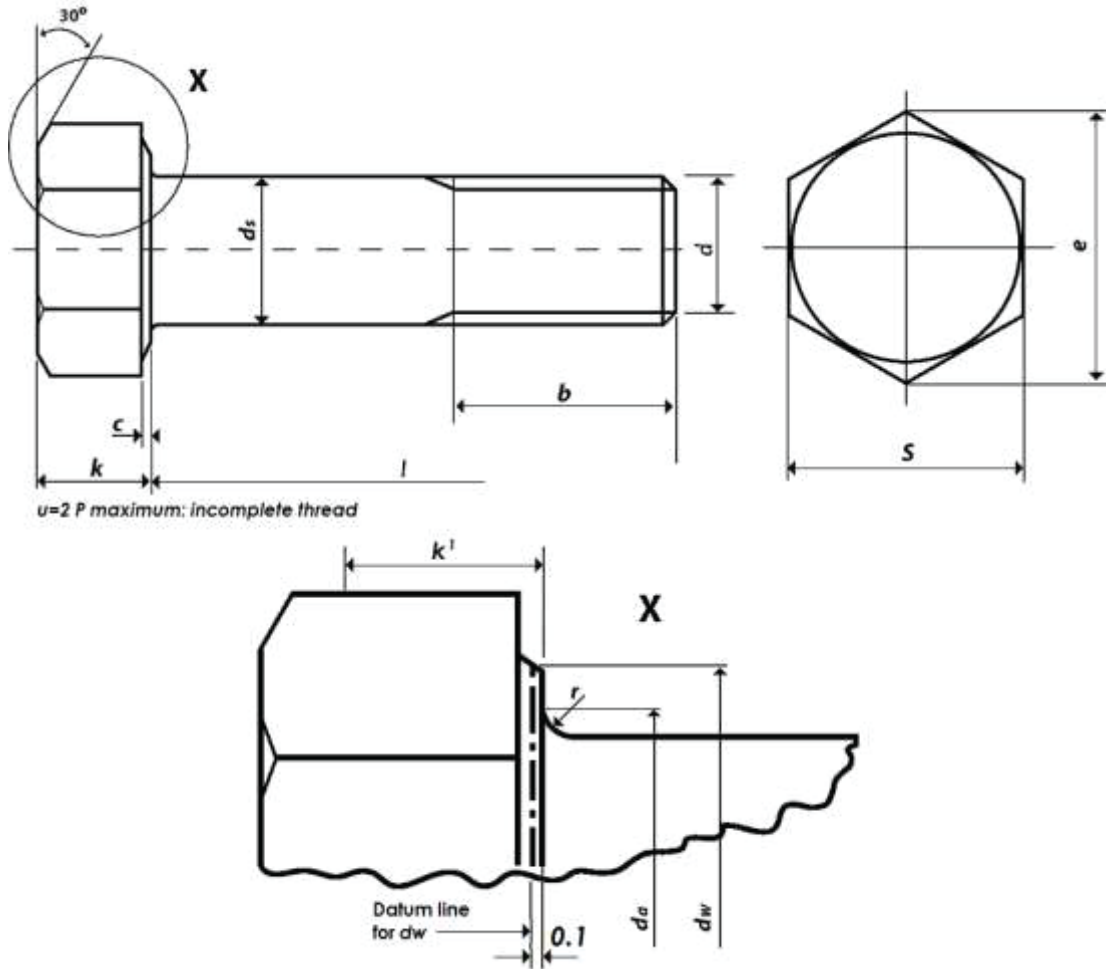
STANDARD

Materials & Manufacture		ASTM A325M
Finish / Coatings	Self Colour/Black	ASTM A325M
	Hot Dip Galvanized	ASTM A153 / A153M Class C
Mechanical Properties		ASTM A325M
Dimensions & Tolerances		ASME B18.2.3.7M
Threads		ASME B1.13M tolerance class 6g
Workmanship		ASTM F788 / F788M
Product Marking		ASTM A325M

A325M BOLT LENGTH TOLERANCES for BOLT DIAMETERS M16 - M36 inc

Nominal Length	Length Tolerance
Up to and including 50	± 1.2
Over 50 up to and including 80	± 1.5
Over 80 up to and including 120	± 1.8
Over 120 up to and including 150	± 2.0
Over 150	± 4.0

All dimensions are in millimetres



All dimensions are in millimetres

A325M TENSILE LOAD and PROOF LOAD REQUIREMENTS for FULL SIZE BOLTS

Nominal Dia. & Thread Pitch	Stress Area	Tensile Load min	Proof Load#	Alternative Proof Load*	Hardness Rockwell HRC	
	mm ²	kN	kN	kN	min	max
M16 X 2	157	130	94.2	104	25	34
M20 X 2.5	245	203	147	162	25	34
M22 X 2.5	303	251	182	200	25	34
M24 X 3	353	293	212	233	25	34
M37 X 3	459	381	275	303	19	30
M30 X 3.5	561	466	337	370	19	30
M36 X 4	817	678	490	539	19	30

Proof load determined by length method

*Alternative Proof Load determined by yield strength method

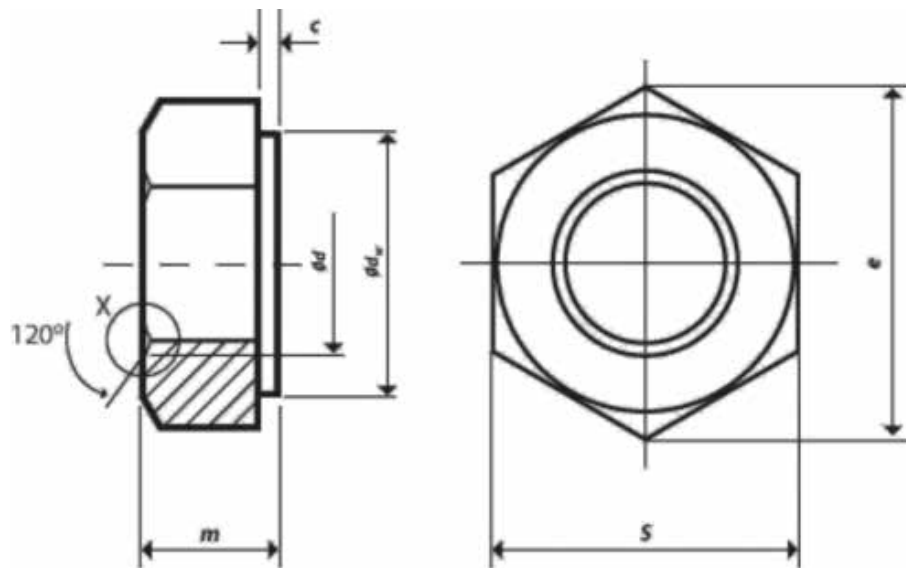
A325M TENSILE STRENGTH REQUIREMENTS for SPECIMENS MACHINED from BOLTS

Nominal Dia	Tensile Strength min	Yield Strength min	Elongation in 4D min	Reduction of Area min
	mm ²	kN	kN	%
M16 to M36 inc	830	660	14	35

A563M NUT DIMENSION CLASSES 8S & 10S

Nominal size and thread pitch d	s		e		m		dw ¹⁾	c		Total runout of bearing surface
	Width across flats		Width across corners		Thickness		Bearing face dia.	Washer face thickness		
	max	min	max	min	max	min	min	max	min	max
M16 x 2	27.00	26.16	31.18	29.56	17.1	16.4	24.9	0.8	0.4	0.47
M20 x 2.5	34.00	33.00	39.26	37.29	20.7	19.4	31.4	0.8	0.4	0.58
M22 x 2.5	36.00	35.00	41.57	39.55	23.6	22.3	33.3	0.8	0.4	0.63
M24 x 3	41.00	40.00	47.34	45.20	24.2	22.9	38.0	0.8	0.4	0.72
M27 x 3	46.00	45.00	53.12	50.85	27.6	26.3	42.8	0.8	0.4	0.80
M30 x 3.5	50.00	49.00	57.74	55.37	30.7	29.1	46.6	0.8	0.4	0.87
M36 x 4	60.00	58.80	69.28	66.44	36.6	35.0	55.9	0.8	0.4	1.05

¹⁾ The maximum value of dw shall not exceed the actual width across flats



MATERIALS

Carbon, carbon alloy steel in accordance with ASTM A563M class 10s

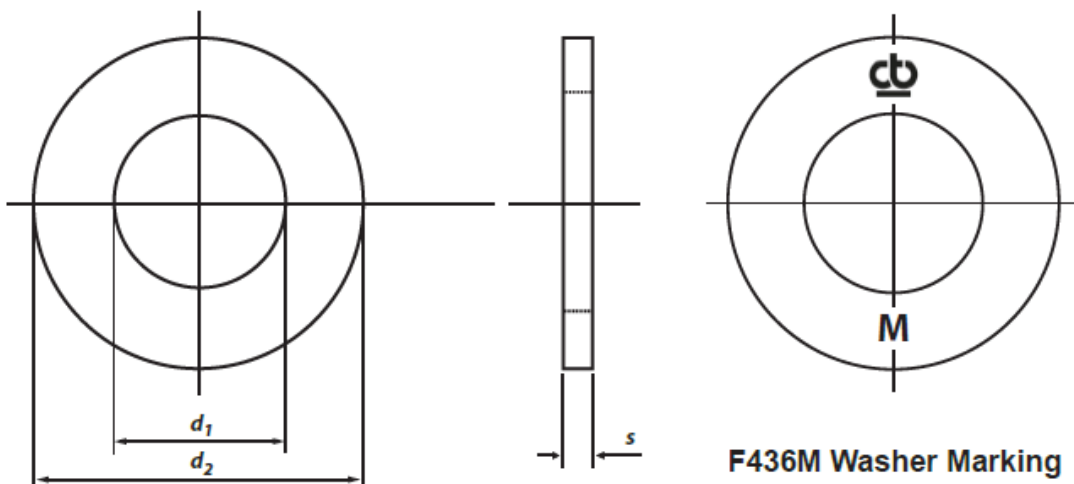
CHARACTERISTIC

STANDARD

Materials & Manufacture		ASTM A563M Class 10S
Finish / Coatings	Self Colour / Black	ASTM A563M
	Hot Dip Galvanized	ASTM A153 / A153M CLASS C
Mechanical Properties	Self Colour/Black	ASTM A563M CLASS 10S
	Hot Dip Galvanized	
Dimensions & Tolerances		ANSI B18.2.4.6M
Threads	Self Colour/Black	ASME B1.13M tolerance class 6H
	Hot Dip Galvanized	ASTM A563M Clause 7.8
Workmanship		ASTM F812 / F812M
Product Marking		ASTM A563M C;ASSES 8S & 10S

F436M CHAMFERED WASHER DIMENSIONS

Nominal washer size		M16	M20	M22	M24	M27	M30	M36
d ₁	min.	18.4	22.5	24.5	26.5	30.5	33.6	39.6
	max.	18.0	22.0	24.0	26.0	30.0	33.0	39.0
d ₂	min.	34.0	42.0	44.0	50.0	56.0	60.0	72.0
	max.	32.4	40.4	42.4	48.4	54.1	58.1	70.1
h	min.	4.6	4.6	4.6	4.6	4.6	4.6	4.6
	max.	3.1	3.1	3.4	3.4	3.4	3.4	3.4



F436M Washer Marking

MATERIALS

Carbon steel in accordance with ASTM F436M

CHARACTERISTIC		STANDARD
Materials & Manufacture		ASTM F436M
Finish / Coatings	Self Colour / Black	ASTM A436M
	Hot Dip Galvanized	ASTM A153 / A153M CLASS C
Mechanical Properties		ASTM F436M
Dimensions & Tolerances		ASTM F436M
Workmanship		ASTM F436 M
Product Marking		ASTM F436M

F436M WASHER MECHANICAL PROPERTIES

Nominal Washer Size	Hardness (HRC)			
	Self Colour / Black		Hot Dip Galvanized	
	min.	max.	min.	max.
M16 to M36 inclusive	38	45	26	45

All dimensions are in millimetres



Cooper & Turner Ltd

STRUCTURAL

ASTM A490M

HEAVY HEX STRUCTURAL BOLTING ASSEMBLIES (METRIC)

(A490M BOLT, A563M NUT & F436M WASHER)

A490M BOLT DIMENSIONS

Thread d		M16	M20	M22	M24	M27	M30	M36
P pitch of thread		2	2.5	2.5	3	3	3.5	4
b	Bolt ≤100	31	36	38	41	44	49	56
	Bolt >100	38	43	45	48	51	56	63
ds	min.	15.30	19.16	21.16	23.16	26.16	29.16	35.00
	max.	16.70	20.84	22.84	24.84	27.84	30.84	37.00
s	min.	26.16	33.00	35.00	40.00	45.00	49.00	58.80
	max.	27.00	34.00	36.00	41.00	46.00	50.00	60.00
e	min.	29.56	37.29	39.55	45.20	50.85	55.37	66.44
	max.	31.18	39.26	41.57	47.34	53.12	57.74	69.28
dw¹⁾	min.	24.9	31.4	33.3	38.0	42.8	46.5	55.9
k'	min.	6.5	8.1	9.2	9.9	11.3	12.4	15.0
k	min.	9.25	11.60	13.10	14.10	16.10	17.65	21.45
	max.	10.75	13.40	14.90	15.90	17.90	19.75	23.55
c	min.	0.4	0.4	0.4	0.4	0.4	0.4	0.4
	max.	0.8	0.8	0.8	0.8	0.8	0.8	0.8
da	max.	18.2	22.4	24.4	26.4	30.4	33.4	39.4
r	min.	0.6	0.8	0.8	1.0	1.2	1.2	1.5

¹⁾ The maximum value of **dw** shall not exceed the actual width across flats

MATERIALS

Medium carbon alloy steel in accordance with ASTM A490M.

CHARACTERISTIC

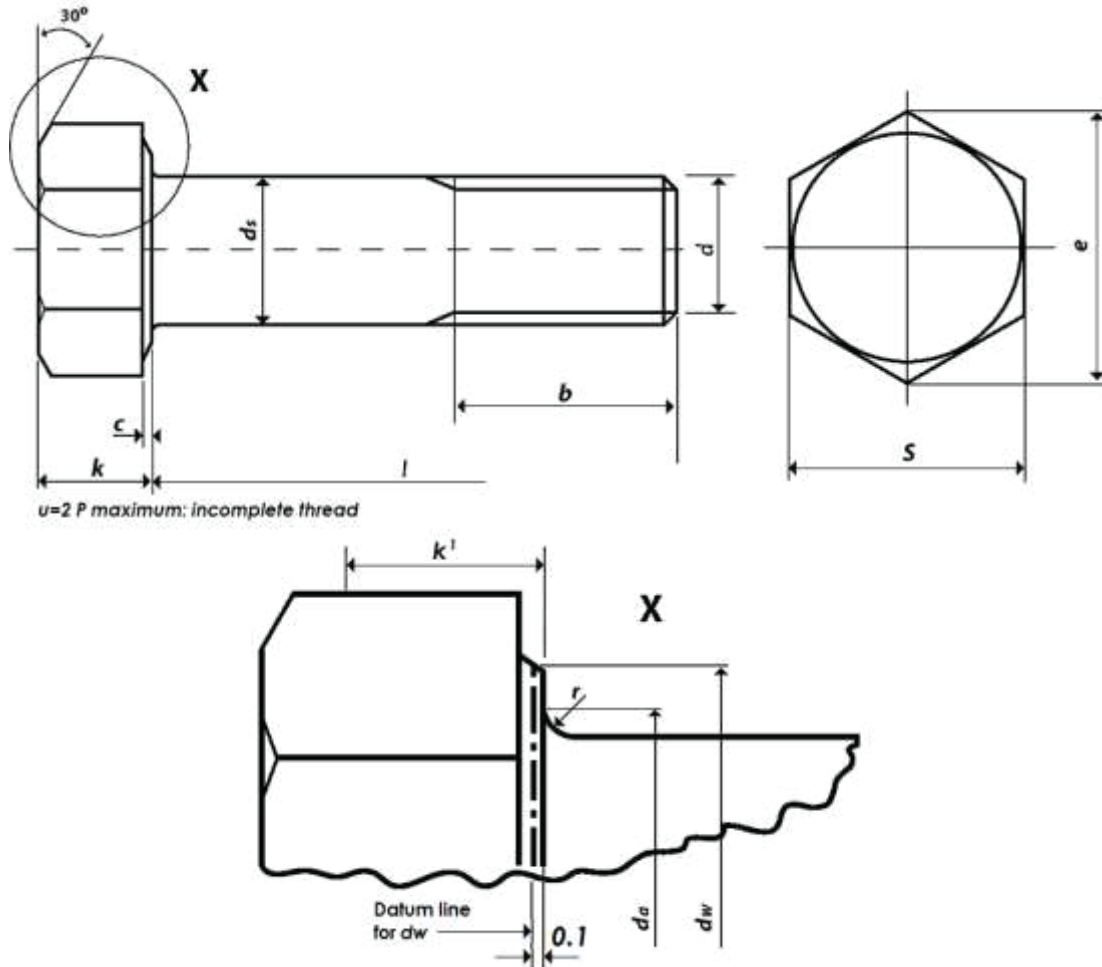
STANDARD

Materials & Manufacture		ASTM A490M
Finish / Coatings	Self Colour/Black	ASTM A490M
	Hot Dip Galvanized	ASTM A153 / A153M Class C
Mechanical Properties		ASTM A325M
Dimensions & Tolerances		ASME B18.2.3.7M
Threads		ASME B1.13M tolerance class 6g
Workmanship		ASTM F788 / F788M
Product Marking		ASTM A325M

A490M BOLT LENGTH TOLERANCES for BOLT DIAMETERS M16-M35 inc

Nominal Length	Length Tolerance
Up to and including 50	± 1.2
Over 50 up to and including 80	± 1.5
Over 80 up to and including 120	± 1.8
Over 120 up to and including 150	± 2.0
Over 150	± 4.0

All dimensions are in millimetres



All dimensions are in millimetres

A490M TENSILE LOAD and PROOF LOAD REQUIREMENTS for FULL SIZE BOLTS

Nominal Dia. & Thread Pitch	Stress Area	Tensile Load min	Proof Load#	Alternative Proof Load*	Hardness Rockwell HRC	
	mm ²	kN	kN	kN	min	max
M16 X 2	157	163	190	130	33	39
M20 X 2.5	245	255	296	203	33	39
M22 X 2.5	303	315	366	251	33	39
M24 X 3	353	367	427	293	33	39
M37 X 3	459	477	555	381	33	39
M30 X 3.5	561	583	679	466	33	39
M36 X 4	817	850	989	678	33	39

Proof load determined by length method

*Alternative Proof Load determined by yield strength method

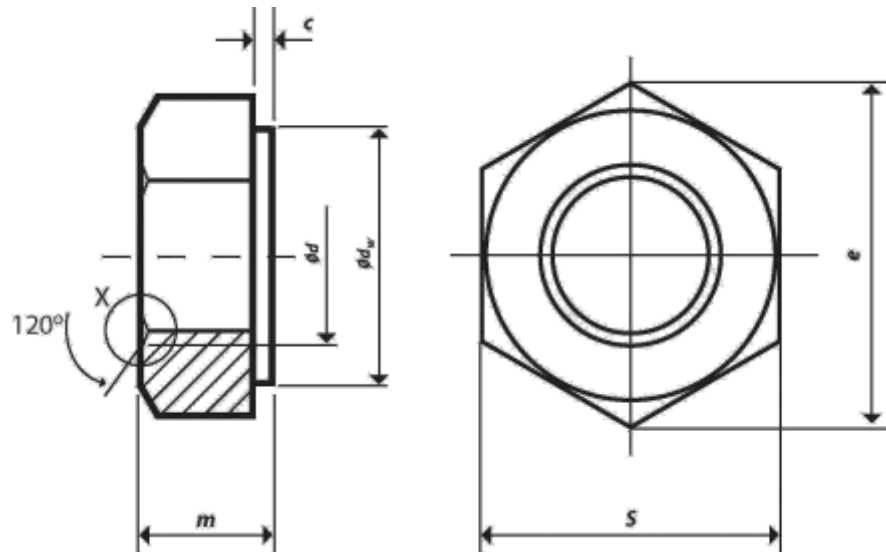
A490M TENSILE STRENGTH REQUIREMENTS for SPECIMENS MACHINED from BOLTS

Nominal Dia	Tensile Strength min		Yield Strength min	Elongation in 4D min	Reduction of Area min
	min	max			
	MPa	MPa			
M16 to M36 inc	1040	1210	940	14	40

A563M NUT DIMENSION CLASS 10S

Nominal size and thread pitch <i>d</i>	s		e		m		dw¹⁾	c		<i>Total runout of bearing surface</i>
	Width across flats		Width across corners		Thickness		Bearing face dia.	Washer face thickness		
	max	min	max	min	max	min	min	max	min	max
M16 x 2	27.00	26.16	31.18	29.56	17.1	16.4	24.9	0.8	0.4	0.47
M20 x 2.5	34.00	33.00	39.26	37.29	20.7	19.4	31.4	0.8	0.4	0.58
M22 x 2.5	36.00	35.00	41.57	39.55	23.6	22.3	33.3	0.8	0.4	0.63
M24 x 3	41.00	40.00	47.34	45.20	24.2	22.9	38.0	0.8	0.4	0.72
M27 x 3	46.00	45.00	53.12	50.85	27.6	26.3	42.8	0.8	0.4	0.80
M30 x 3.5	50.00	49.00	57.74	55.37	30.7	29.1	46.6	0.8	0.4	0.87
M36 x 4	60.00	58.80	69.28	66.44	36.6	35.0	55.9	0.8	0.4	1.05

¹⁾ The maximum value of dw shall not exceed the actual width across flats



MATERIALS

Carbon and carbon alloy steel in
accordance with ASTM A563M classes 10s

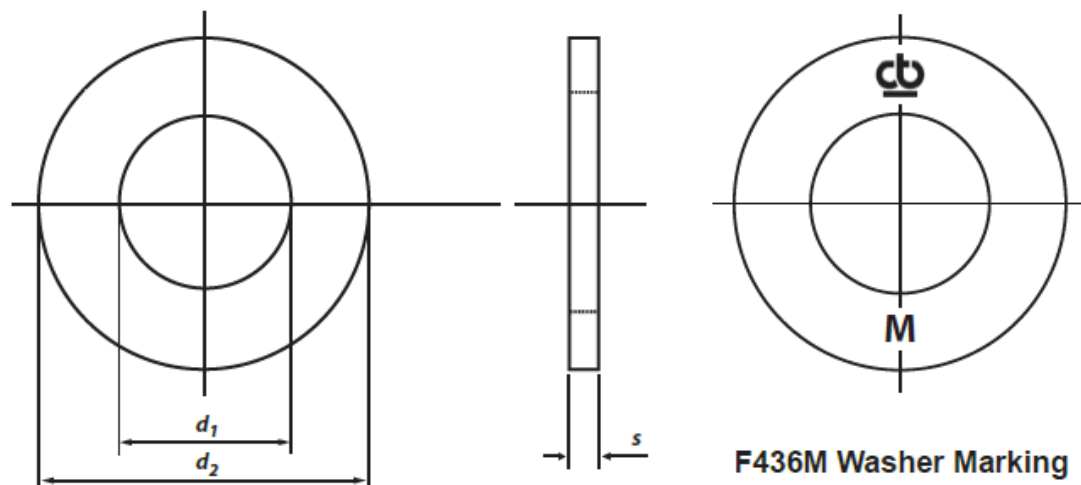
CHARACTERISTIC

STANDARD

Materials & Manufacture		ASTM A563M Classes 10S
Finish / Coatings	Self Colour / Black	ASTM A563M
Mechanical Properties		ASTM A563M CLASS 10S
Dimensions & Tolerances		ANSI B18.2.4.6M
Threads		ASME B1.13M tolerance class 6H
Workmanship		ASTM F812 / F812M
Product Marking		ASTM A563M C; ASSES 8S & 10S

F436M CHAMFERED WASHER DIMENSIONS

Nominal washer size		M16	M20	M22	M24	M27	M30	M36
d₁	min.	18.4	22.5	24.5	26.5	30.5	33.6	39.6
	max.	18.0	22.0	24.0	26.0	30.0	33.0	39.0
d₂	min.	34.0	42.0	44.0	50.0	56.0	60.0	72.0
	max.	32.4	40.4	42.4	48.4	54.1	58.1	70.1
h	min.	4.6	4.6	4.6	4.6	4.6	4.6	4.6
	max.	3.1	3.1	3.4	3.4	3.4	3.4	3.4



F436M Washer Marking

MATERIALS

Carbon steel in accordance with ASTM F436M

CHARACTERISTIC		STANDARD
Materials & Manufacture		ASTM F436M
Finish / Coatings	Self Colour / Black	ASTM A436M
Mechanical Properties		ASTM F436M
Dimensions & Tolerances		ASTM F436M
Workmanship		ASTM F436M
Product Marking		ASTM F436M

F436M WASHER MECHANICAL PROPERTIES

Nominal Washer Size	Hardness (HRC)	
	Self Colour / Black	
	min.	max.
M16 to M36 inclusive	38	45

All dimensions are in millimetres



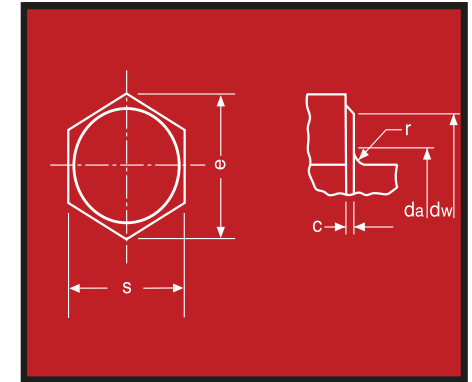
STRUCTURAL

DIN 6914/BS-EN 14399-4
HEAVY HEX STRUCTURAL
BOLTING ASSEMBLIES (METRIC)
DIN6914 BOLT, DIN6915 NUT, DIN6916 WASHER

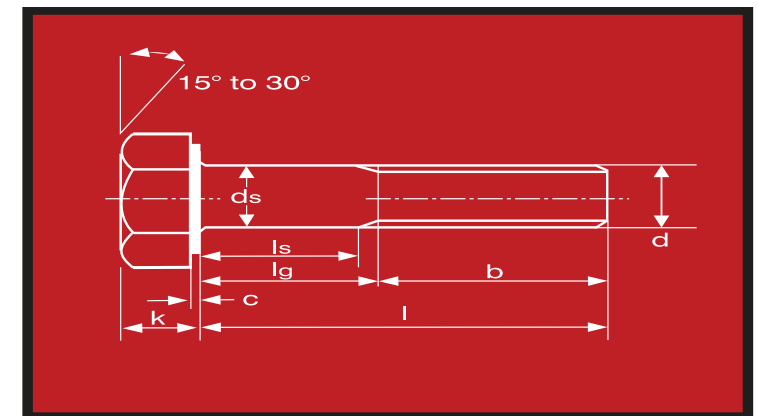
Technical Data

DIN 6914 (BS-EN 14399-4) HSFG HEX BOLT

DIN 6914		(HV Bolt Class 10.9)						Dimension					
Nominal Size and Thread Diameter d	Pitch of Thread p	Diameter of Unthreaded Shank d_a		Width Across Flats s		Width Across Corners e	d_w	Depth of Washer Face c		Radius Under Head r	Transition Diameter d_e	Thickness of Head k	
	(coarse pitch series)	max	min	max	min	min	min	max	min	min	max	max	min
M12	1.75	12.70	11.30	22.00	21.16	23.91	20	0.6	0.4	1.2	15.20	8.45	7.55
M16	2.00	16.70	15.30	27.0	26.16	29.56	25	0.6	0.4	1.2	19.20	10.75	9.25
M20	2.50	20.84	19.16	32.00	31.00	35.03	30	0.8	0.4	1.5	24.00	13.90	12.10
M22	2.50	22.84	21.16	36.00	35.00	39.55	34	0.8	0.4	1.5	26.00	14.90	13.10
M24	3.00	24.84	23.16	41.00	40.00	45.20	39	0.8	0.4	1.5	28.00	15.90	14.10
M27	3.00	27.84	26.16	46.00	45.00	50.85	43	0.8	0.4	2.0	32.00	17.90	16.10
M30	3.50	30.84	29.16	50.00	49.00	55.37	47	0.8	0.4	2.0	35.00	20.05	17.95
M36	4.00	37.00	35.00	60.00	58.80	66.44	57	0.8	0.4	2.0	41.00	24.05	21.95



DIN 6914 HSFG HEX BOLT	
Material	Steel
General Requirement	As per DIN6914 / DIN 267 P1
Thread Tolerance	DIN 13-P12 and 15
Mechanical Properties	As specified in ISO898-1
Property Classes	10.9
Limit deviation and geometrical tolerances	a) Product Grade C b) As specified in ISO 4759-1
Surface Finish	a) As processed b) Bs En Iso10684 c) Din 267-P10 shall apply with regard to hot dip galvanizing.
Acceptance inspection	As specified in DIN 267-P5



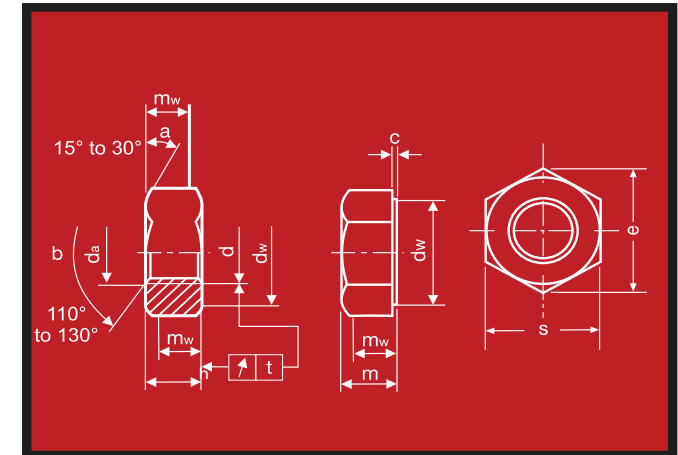
Whilst the information is provided in good faith, no member of the companies shall be under any responsibility or liability in respect of errors or information that is found to be incorrect or for any reliance the user may place on it

Technical Data

DIN 6915 (BS-EN 14399-4) HSFG HEX NUT

DIN 6915		Heavy Hex Nut (HV)					Dimension			
Nominal Size & Thread Diameter d	Pitch p	da		Across Flat Corner e	dw	mw	Across Flats s		Thickness of nut h	
	Coarse pitch series	max	min	Min	min	min	max	min	max	min
M12	1.75	13.0	12.0	23.91	20.0	7.71	22.0	21.16	10.0	9.64
M16	2.00	17.30	16.0	29.56	25.0	9.84	27.0	26.18	13.0	12.3
M20	2.50	21.60	20.0	35.03	30.0	11.92	32.0	31.00	16.0	14.9
M22	2.50	23.70	22.0	39.55	34.0	13.52	36.0	35.00	18.0	16.9
M24	3.00	25.90	24.0	45.20	39.0	14.96	41.0	40.00	20.0	18.7
M27	3.00	29.10	27.0	50.85	43.5	16.56	46.0	45.00	22.0	20.7
M30	3.50	32.40	30.0	55.37	47.5	18.16	50.0	49.00	24.0	22.7
M36	4.00	38.90	36.0	66.44	57.0	22.16	60.0	58.80	29.0	27.7

*for hot dip galvanized nuts, dimensions apply before galvanizing or coating.



Characteristic		Standard
Material		Steel
General requirements		ISO 898-2
Thread	Tolerance	6H or 6AZ
	International standard	DIN 13-12 & 13-15 ISO 261, ISO 965-2, ISO 965-5
Mechanical Properties	Property Class	10
	European Class	EN 20898-2
Tolerances	Product Grade	B
	International standard	EN ISO 4759-1
Surface Finish	Normal	As processed
	Hot Dip Galvanized	DIN 267-10 / EN ISO 10684
	Others	To be agreed
Surface discontinuities		Limits of surface discontinuities as specified in EN 493
Acceptance inspection		DIN EN ISO 3269 applies with regards to acceptance inspection.

¹⁾ Steel bolt/nut assemblies using DIN 6914 bolts and DIN 6915 nuts are designed to comply with the requirement that if an adequately lubricated assembly fails due to over tightening. Stripping of the thread occurs rather than fracture of the bolt.

DIN 6915 Heavy Hex Nut Proof Loads. Classes & 10

Nut Thread Dia	Stress Area Standard Test Mandrel (mm ²) A_s	Property class
		10
		Tolerance Class 1) 6H or 2) 6AZ Proof Load KN ($A_s \times S_p$) N
M12	84.30	97.80
M16	157.70	182.1
M20	245.0	284.2
M22	303.0	351.2
M24	353.0	409.5
M27	459.0	532.4
M30	561.0	650.8
M36	817.0	947.7

6H is the tolerance class for self color & electro zinc plated nuts .
6AZ is the tolerance class for hot dip galvanized nuts.

Marking

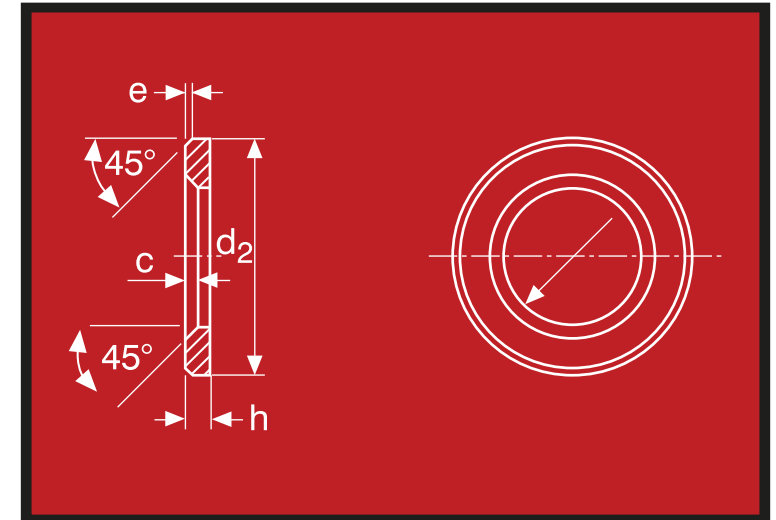


Whilst the information is provided in good faith, no member of the companies shall be under any responsibility or liability in respect of errors or information that is found to be incorrect or for any reliance the user may place on it

Technical Data

DIN 6916 (BS EN-14399-6) HSFG HARDENED WASHER (H/HV)

DIN 6916 Chamfered Hardened Washer										Dimensions
Nominal Size of bolt or screw	DIN 6916									
	Inside diameter $d1$		Outside diameter $d2$		Thickness h		External chamfer e		Internal chamfer c	
	max	min	max	min	max	min	max	min	max	min
M12	13.27	13.00	24.00	23.48	3.3	2.7	1.00	0.50	1.9	1.6
M14	15.27	15.00	28.00	27.48	3.3	2.7	1.00	0.50	1.9	1.6
M16	17.27	17.00	30.00	29.48	4.3	3.7	1.50	0.75	1.9	1.6
M18	19.33	19.00	34.00	33.38	4.3	3.7	1.50	0.75	2.5	2.0
M20	21.33	21.00	37.00	36.38	4.3	3.7	1.50	0.75	2.5	2.0
M22	23.33	23.00	39.00	38.38	4.3	3.7	1.50	0.75	2.5	2.0
M24	25.00	25.00	44.00	43.38	4.3	4.4	1.50	0.75	2.5	2.0
M27	28.52	28.00	50.00	49.00	5.6	4.4	2.00	1.00	3.0	2.5
M30	31.62	31.00	56.00	54.80	5.6	4.4	2.00	1.00	3.0	2.5
M36	37.62	37.00	66.00	64.80	6.6	5.4	2.50	1.25	3.0	2.5



Specification and reference standards		
Characteristic		Standard
Material		Steel ¹⁾ Quenched and tempered to a hardness.
General requirements		DIN 6916
Finish / coating	Self color / black	DIN 6916
	Zinc electroplated	BS 7371-3 OR BS EN ISO 4042
	Hot dip galvanized	BS EN ISO 10684 / DIN 267-P10
Mechanical Properties		300 HV to 370 HV
Product grade		A (as specified in DIN 522)
Product marking		H / HV



Whilst the information is provided in good faith, no member of the companies shall be under any responsibility or liability in respect of errors or information that is found to be incorrect or for any reliance the user may place on it

SQUIRTER DTI WASHER



SQUIRTER DTI WASHER



Features:

Manufactured in the USA according to ASTM F959M. Lot Number marked on each Squirter DTI for tracing. Test certificates provided. Visually indicates tension by releasing an orange coloured silicon. DTI (Direct Tension Indicating) Washers, also known as LIW (Load Indicating Washers), are used to achieve required tension loads on bolts in countless applications.

Squirter® DTIs are DTIs with a flexible silicone embedded in the depressions under the bumps.

To use them, simply ...

Tighten the bolt until the calibrated amount of orange silicone appears from under the DTI's squirt locations, then stop tightening.



- By Squirt alone, you can tell which bolts are tight, which ones are not and why.
- All by eye without torque wrenches, match-marking or feeler gages.
- Orange is good, Get Orange and you have got it right!



Case Study:

The use of 'Squirter®' DTI's has enabled bolting, inspection and approval on the Dubai International Airport project to be carried out in record time. The first 8000 tons of the new prestigious terminal building used standard DTI's, but when Cleveland Bridge commenced work on a new phase they began to use 'Squirter®' DTI's. Now several hundred thousand 'Squirters®' later there is no going back. Three levels of inspection exist on this project, by Cleveland Bridge, an outside inspection company and the owner's consultant, DAR. Despite this, Cleveland Bridge reported that the visual confirmation offered by 'Squirter®' DTI's had enabled site staff to finish a joint, have it inspected and move on quickly, without any callbacks

Technical details:

Direct tension indicating (DTI) washers. These washers are used to get bolts installed to the correct TENSION, regardless of the bolt's torque resistance. DTIs are available in imperial sizes from 1/2" up to 1-1/2" and metric Sizes M12 to M36 as described by ASTM F959, BS 7644 and EN 14399. Our DTIs are manufactured for use with F3125, A325, A490, 8.8 and 10.9 bolts and available in several finishes such as galvanize & plain finish. Other coatings such as Fluorocote, Dacromet, Xylan, Type 3 steel can be done on request

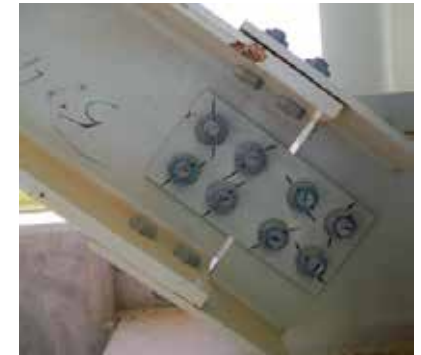
Easier & Better than Turn-of Nut

- You don't have to remember to stop turning, at 1/3, 1/2, or 2/3 turn.
- No matching marking necessary.
- No need for a second set of hands to hold a spud wrench.



Better than a Twist-Off Bolt

- Tension control rather than torque control.
- No spline end to twist off and become a safety hazard.
- Problems caused by the splined end shearing off in torsion, before the plies are together.



Easier & Better than Calibrated Wrench

- You don't have to establish and then check the torque resistance of bolts daily and for each lot and when your wrench condition changes



Erector Benefits

- Enables correct tensioning as fast as the wrench can be moved to the next bolt, because the operator can see when to stop.
- The orange silicone is easy for erectors to see. No feeler gage except during calibration.
- Erectors know when to stop tightening. Some applications prefer bolts tightened over a minimum, without over tightening.

Inspector Benefits

- Once calibrated, because inspectors can easily see the orange squirts, they don't have to climb out to all the connections or lug around a torque wrench to know the connection has been completed.
- And instead of sampling only some of the DTI's with a feeler gage, Squirter® DTIs allow virtually 100% inspection



Manufacturing Specifications

Standard North American DTI's are made to ASTM F959 or F959M (metric), which define the chemical, mechanical (read compression load vs. residual DTI gap), and dimensional requirements per ASME B18.2.6. Complete DTI dimensions and mechanical properties are available from ASTM and ASME. The following is a summary of ASTM F959.

Chemical Requirements (%) Product Analysis

Carbon	.27 - .53
Manganese	.47 - .93
Phosphours (max)	.043
Sulfur (max)	.048
Silicon	.13 - .37

DTI's are made to compress in proportion to the applied load or bolt tension. A sample of the lot must demonstrate a compression load range at a residual gap of .015" within the following values (the minimum is based on 70% of the minimum ultimate tensile strength of the applicable bolt grade, and the maximum is 20% higher than that). Note that F959 stipulates that the compression load test gap of .015" be the same whether the DTI is plain finish, galvanized, or epoxy coated. Note that the laboratory certification compression load tests for DTI's DO NOT involve bolts, but rather the tests are performed with the DTI's compressed between hardened mandrels.

The compression load test ranges stipulated by ASTM F959 are as follows: pe here to arc DELL

DTI Size-Metric Series	Type 8.8 (kN)	Type 10.9 (kN)
M16	91-109	114-131
M20	142-170	179-206
M22	176-211	221-254
M24	205-246	257-296
M27	267-320	334-384
M30	326-391	408-469
M36	475-570	595-684

DTI Size-Inch Series	Type A325 (100lb)	Type A490 (100lb)
1/2	12-14	15-18
5/8	19-23	24-29
3/4	28-34	35-42
7/8	39-47	49-59
1	51-61	64-77
1 1/8	56-67	80-96
1 1/4	71-85	102-122
1 3/8	85-102	121-145
1 1/2	103-124	148-178

Coatings

F959 only allows for mechanical galvanizing (to ASTM B695) and epoxy coating on top of mechanical galvanizing. Other coatings are allowed with the approval of both the manufacturer and the purchaser. Coating of DTI's by anyone other than the manufacturer is prohibited because all compression testing and certification must be done after coating.

Certifications

ASTM F959 requires that compression test certifications be issued which show the results of 29 pieces selected at random from the manufactured lot and compression tested according to the F959 Appendix A1. The compression load of all 29 pieces must be within the range stipulated above. Applied Bolting makes all product certifications available by .pdf download.

DTI Markings

All DTI's are stamped with an individual unique lot mark, which can be related to the lot number. Through the lot number, all DTI lots are traceable to date of manufacture and compression load properties.

Quick Start Guide



Thank you for choosing Applied Bolting

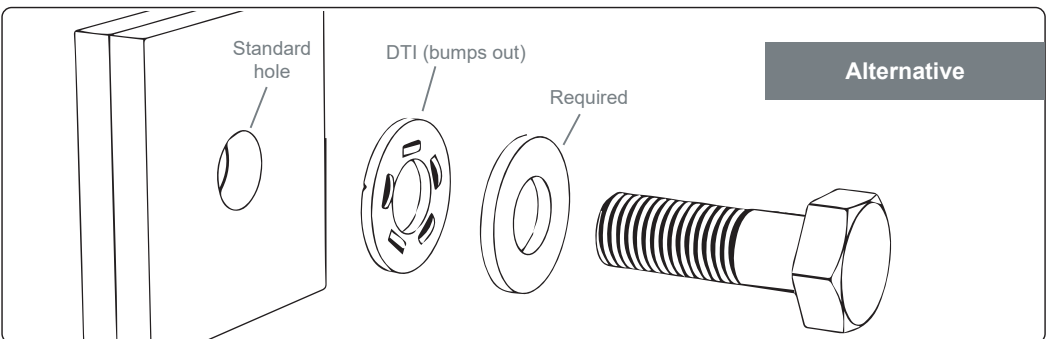
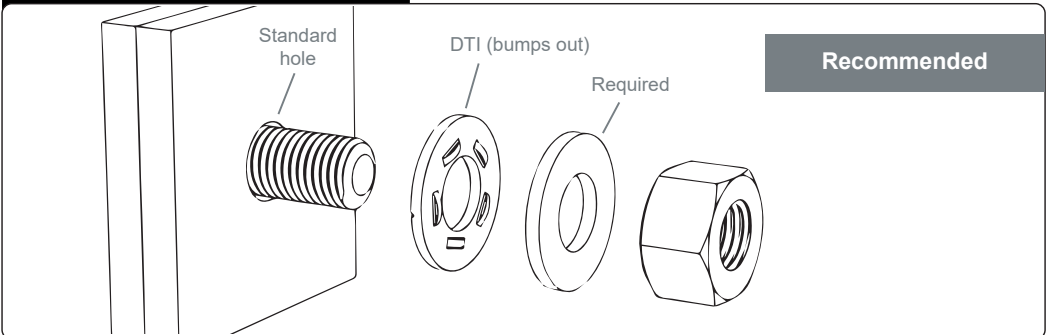
Squirter.DTIs

DuraSquirt.DTIs

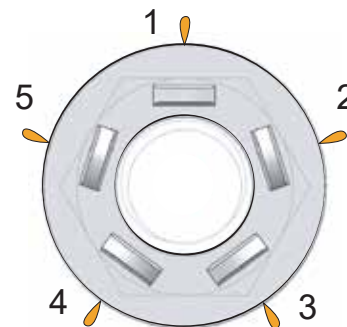
Pro Tips (read first)

- Store all hardware to prevent corrosion, reducing the effort needed to tension the bolts.
- Lubricate both the bolt threads and washer face of nuts to reduce friction and improve the installation.
- Use a tool with enough power, hardware testing can check this.
- Hole detail in the steelwork is critical for proper assembly.
- Videos, tips and specific instructions are available at appliedbolting.com.

Step 1 Assemble



Step 2 Tighten / Inspect



When orange is visible from all bumps, installation and inspection is complete.

OTHER HEAVY LOAD ATTACHMENTS



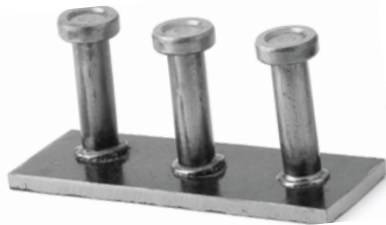
L Shaped Anchor

Grades: 4.6 | 8.8
Finish: HDG



Anchor Bolt (Various Types)

Grades: 8.8
Finish: HDG



Sheer Stud

Grades: 8.8
Finish: HDG



Stud Bolt

Grades: 4.6 | 8.8 | 10.9 | 316 | 304
Finish: SS | GI | Black | HDG

Our Branches

Deira Branch:

Naif Road, Al Nakheel Street

Al Safeer Plaza, Shop No-1

Ground Floor - Dubai

Tel: +971 4 2223024 / 2231411

Email: deirasales@husainibrothers.com

Al Quoz Headquarters:

28 11 B St - Al Quoz Ind. Area 1 - Dubai

Tel: +971 4 2274781, P.O.Box: 3990

Website: www.husainibrothers.com

Email: sales@husainibrothers.com

Jaddaf Branch:

Al Jaddaf Ship Docking Yard

Gate1 Shop no.4,

Creek metro station - Dubai

Tel: +971 4 3243761, Fax: +971 4 3241137

Email: sales@husainibrothers.com

Husaini
Brothers



Fasteners specialist since 1968

STRUCTURAL BOLTS

When you
really need
to **hold**
it together!

P.O.Box: 3990

28, 11 B, Street,

Al Quoz Ind. Area 1

Dubai - U.A.E

Tel.: +971 4 2274781

Website: www.husainibrothers.com

Email: sales@husainibrothers.com



ISO 9001: 2015 CERTIFIED COMPANY