



Steel Mart FZE
Architectural & Decorative
Stainless Steel

Catalogue | **2019**

About us



Steel Mart FZE- incorporated in 2008, as a Jebel Ali Free Zone Company in Dubai - U.A.E is specialized in **Architectural & Decorative Stainless Steel** Sheets (Hairline finish, Antique , Rustic, Mirror, Etched Mashrabiya patterns, Embossed finishes and many more) in many varieties colors and Patterns, Stainless Steel Wire & Woven Mesh, SS Tiles & Mosaic, which are all widely used in building interiors and exteriors.

The company mainly caters to UAE as well as several countries in the Middle East Market and North Africa.

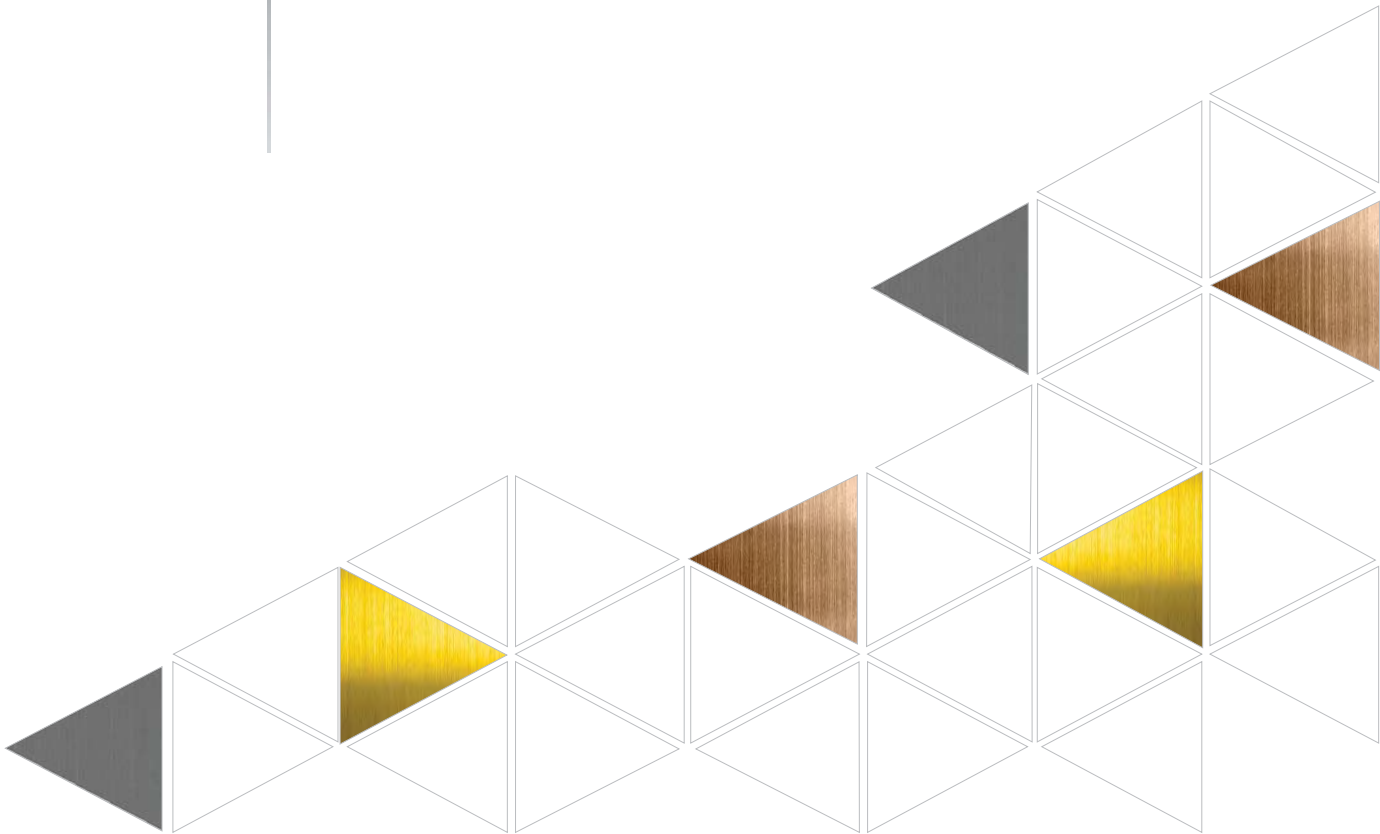
Many decades of experience in the business of Stainless Steel have made us experts in those products.

This knowhow enables our dedicated team to make a link between reliable suppliers , Mills, Fabricators and Color processing factories with our client base in the most efficient way.

Our mission is to provide quality, reliability, on time delivery and competitive conditions to our clients.



- Stainless Steel Mirror Sheet 4
- Stainless Steel Hair line, anti- finger print(AFP)..... 4
- Stainless Steel Crossed Hairline finish (AFP) 5
- Stainless Steel Vibration sheet (AFP) 5
- Stainless Steel Bead Blast sheet (AFP)..... 5
- Stainless Steel Mashrabiya Pattern (Etched) sheet.....6
- Antique & Patina Metals 7
- Stainless Steel Embossed sheet..... 8
- Stainless Steel Hammered sheets..... 9
- Stainless Steel Water ripple Panels 10
- Stainless Steel flexible Wire Mesh..... 11
- Stainless Steel rigid Mesh 12
- Metal Curtain Mesh..... 13
- Fabric Metal Mesh..... 14
- Expandable Metal Mesh..... 15
- Stainless Steel Mosaic & Tiles..... 16
- Stainless Steel Backsplash & Moasic..... 17



Stainless Steel Mirror Colored (PVD) sheets

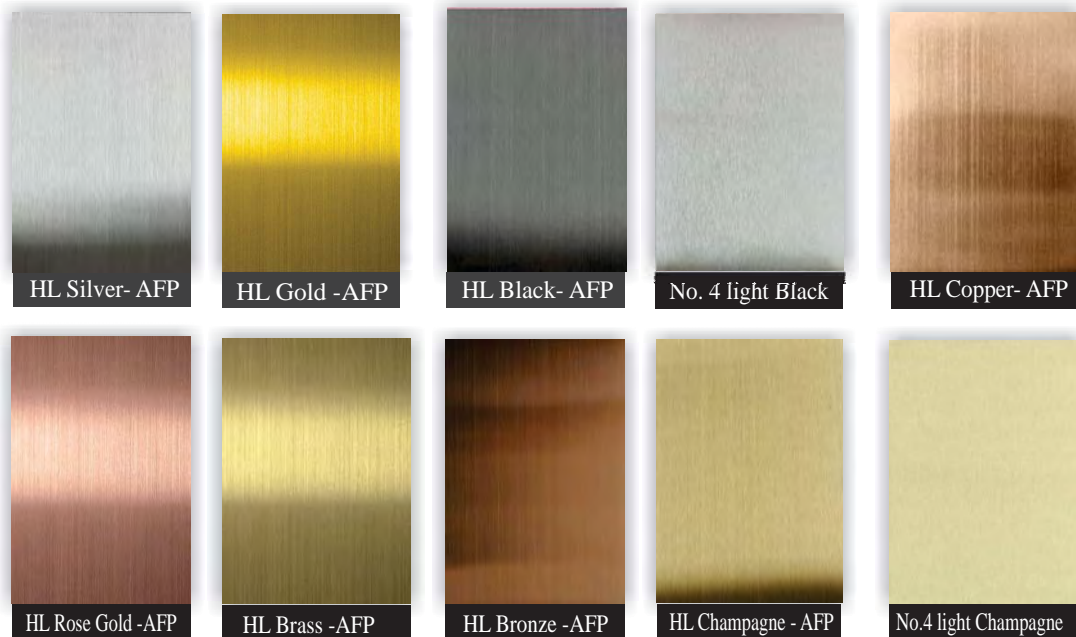
Our Stainless Steel coloring uses PVD (Physical Vapor Deposition) technique.

PVD coloring improves the performance of Colored Stainless Steel by increasing wear, scratches & corrosion resistance far superior to conventional coating methods like powder coating or electroplating.



No. 8 non-directional is high gloss, mirror finish Stainless Steel sheet with PVD color designed for Architectural Jobs such as wall cladding, Elevator, Sinage and etc..

Stainless Steel Hair Line sheets with Anti Finger Print(AFP)



Steel Mart is proud to offer Nano technology Anti-Fingerprint Print(AFP) on Hairline, Vibration, Bead Blast.

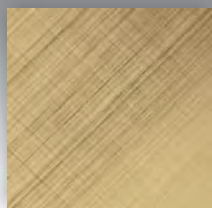
Anti-fingerprint coating is transparent and provides lasting protection for Stainless Steel. The AFP protects Stainless Steel from Water, Oil, dust and fingerprints and is easy to clean.

All of HL and Mirror sheet are protected by Novocel (France) PVC coating which is suitable for laser cutting.

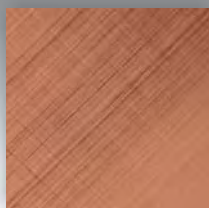
Stainless Steel Mirror Crossed Hairline finish with Anti Finger Print



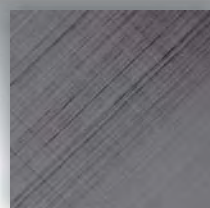
CHL-Silver



CHL- Gold



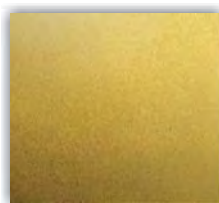
CHL- Rose Gold



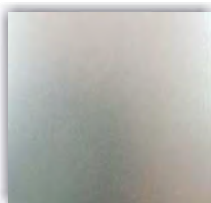
CHL- Black

45 degree Hair lines crossed each other at 90 degree direction on Stainless Steel Mirror surface to gives Stainless Steel elegant look for more decoration options.
Available size : 0.80 x 1220 x 2440mm

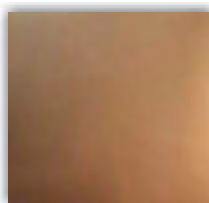
Stainless Steel Bead Blast sheets



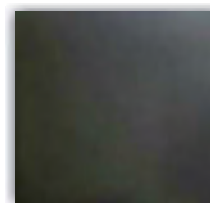
Bead blast-Gold



Bead blast- Silver



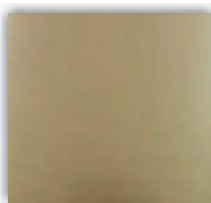
Bead blast-Bronze



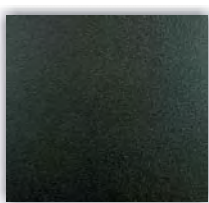
Bead blast- Black



BB - Rose Gold



BB Champagne

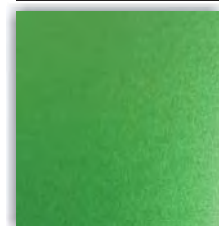


Pc95- Black

Grade: ASTM 304
Thickness: 0.8 - 2mm
Sheet sizes:
1220 x 2440 mm
1220 x 3050 mm
1500 x 3000 mm

Application: Architectural Cladding, Panels, Facades, Canopies, Column, Door Panels, display equipment, street furniture, Signage, Elevator Cabin, Kitchen equipments....

Stainless Steel soft vibration sheet



Vibration-Green



Vibration -Gold

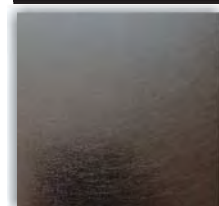


Vibration-Blue

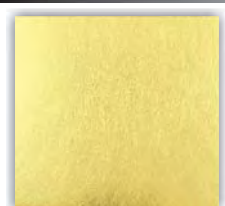


Vibration-Silver

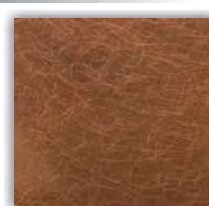
Stainless Steel rough vibration sheet



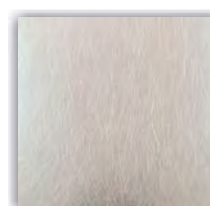
Vibration- Black



Vibration- Gold



Vibration-Rose Gold



Vibration- Silver

Vibration is a multi-directional of grit lines on surface of Stainless Steel satin or mirror finishes.
Vibration can be used on elevator wall cabin , elevator doors cladding, Elevator door frames, wall and column cladding and etc....

Stainless Steel Antique Mashrabiya pattern sheet



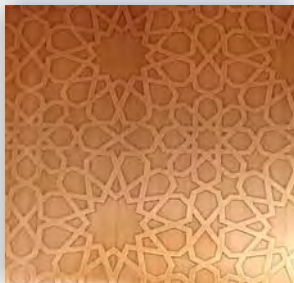
SM-M100- Silver



SM-M101- Silver



SM-M101-Gold



SM-102(Antique copper)



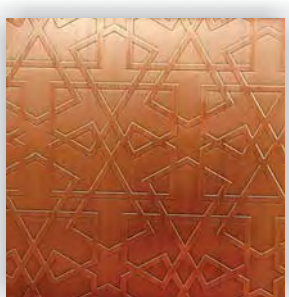
SM-102(Antique Brass)



SM-102(Antique Gold)



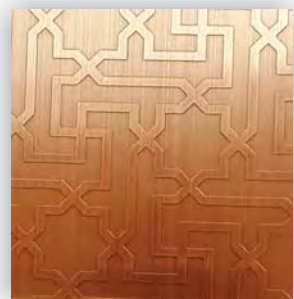
SM-103(Antique Gold)



SM-103(Antique Copper)



SM-103(Antique Brass)



SM-104(Antique Copper)



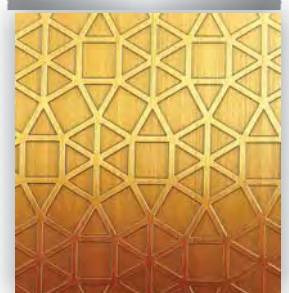
SM-104(Antique Brass)



SM-104(Antique Gold)



SM-105(Antique Brass)



SM-105(Antique Gold)

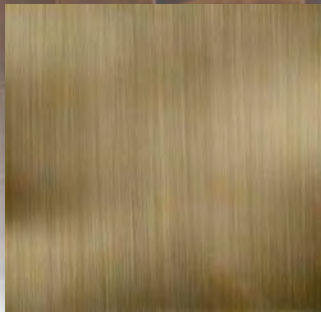


SM-105(Antique Copper)

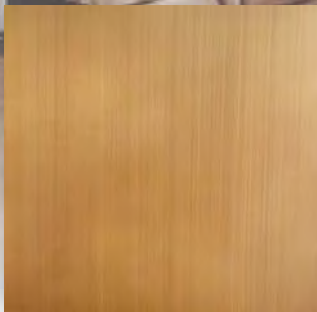
Custom designs: Steel Mart offers designers and architects the ability to design their own custom designs.

Application: Elevator doors, Cabin, Escalators, Facades, Doors, Gates, Columns, and many more decorative applications.

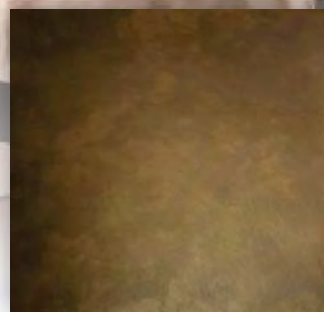
Stainless Steel/Copper Antique colors



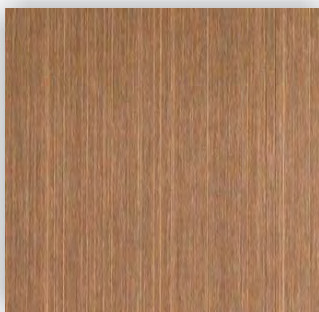
Antique HL Brass



Light Anti. HL Brass



Rustic Brass



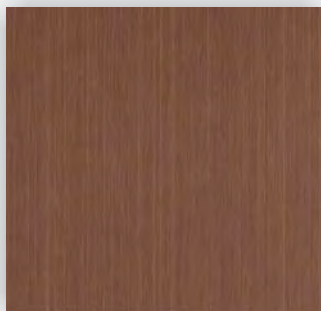
Antique HL Copper



Rustic Copper



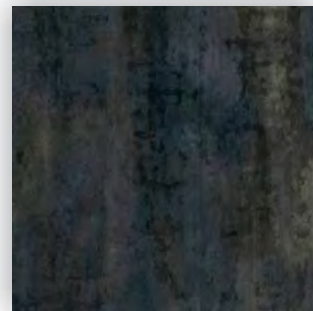
Copper patina



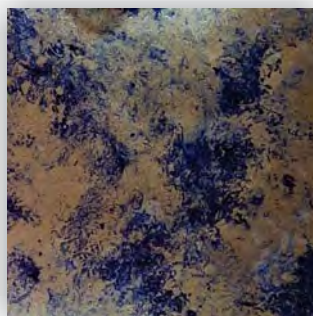
Antique HL Bronze



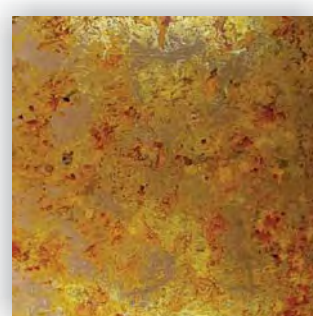
Rustic Iron



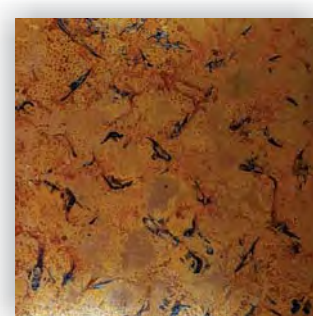
Black Iron patina



SS Antique Mirror-silver



SS Antique Mirror-Gold



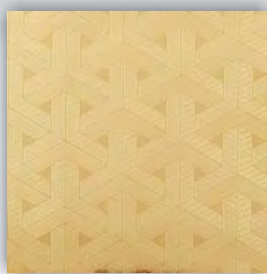
SS Antique Mirror-Copper

Matt finished stainless steel sheets are brand new finishes and are developed to meet diversified needs of architects in the world. Antique series stainless steel finish are developed as substitute for antique finished Copper, Bronze & Brass sheets.

Stainless Steel Embossed Sheets



Interlock-Silver



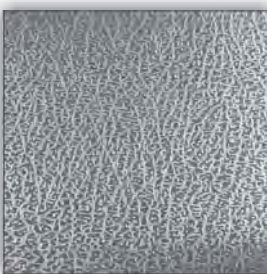
Interlock-Gold



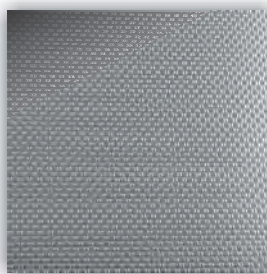
Interlock-Black



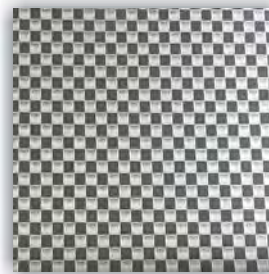
Interlock-Rose gold



Elephant skin



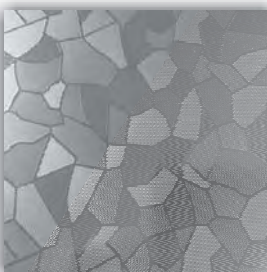
Linen



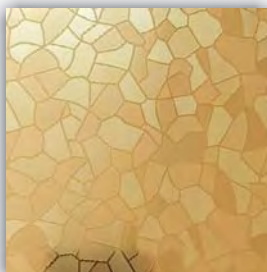
Chess



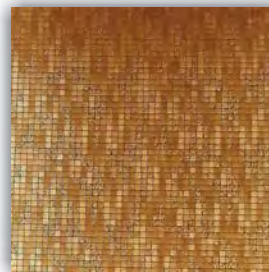
Star Light



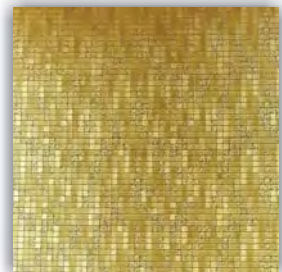
Icy Bamboo



Icy Bamboo- Gold



Diamond -Rose Gold



Diamond - Gold



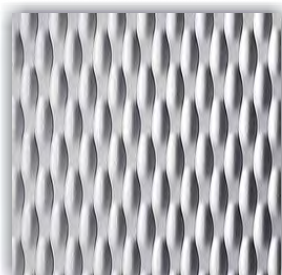
Wood-Silver



Wood-Brown



Wood-Black



5WL

Stainless Steel Embossed sheet is durable, long lasting and anti scratch, the patterns are attractive and offer designers a unique material to work with. Available in different colors.

Grade: ASTM 304

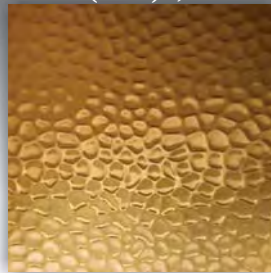
Thickness: 0.8 - 1.5mm

Sheet size: 1220 x 2440 mm

Small size Hammered (SH) , No. 4 (brushed) finish



SH- Silver



SH- Rose gold

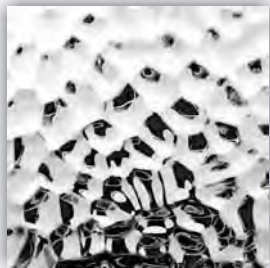


SH- Black

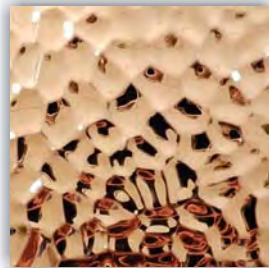


SH- Champagne

Medium size hammered (Concave type), mirror finish



MHI- Silver

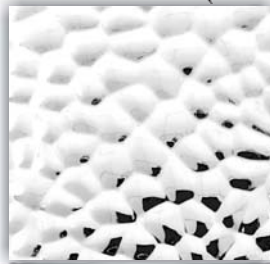


MHI- Rose gold

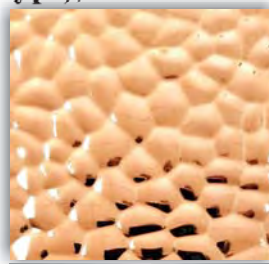


MHI- Champagne

Medium size hammered (Convex type), mirror finish



MHO- Silver



MHO- Rose gold



MHO- Champagne

Small size pressed hammer , mirror finish



Press Hammer-Silver

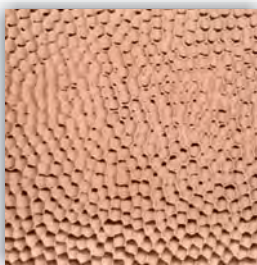


Press Hammer-Rose gold



Press Hammer-Champagne

Small size Hammered(Concave type), Antique brushed finish



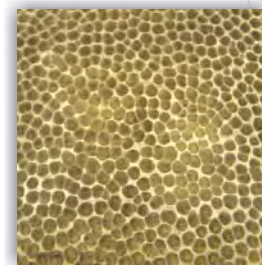
SH- Copper



SH- Antique Brass



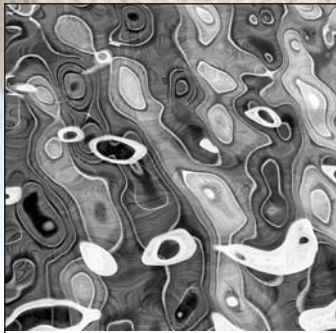
SH- Matt Brass



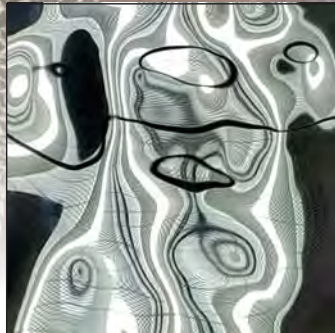
SH- Antique Brass

Grade: ASTM 304 Thickness: 0.6 - 0.7mm Sheet size: 1220 x 2440 mm

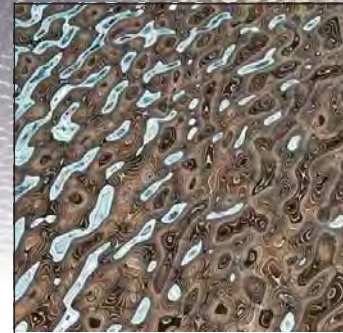
Stainless Steel water ripple panels



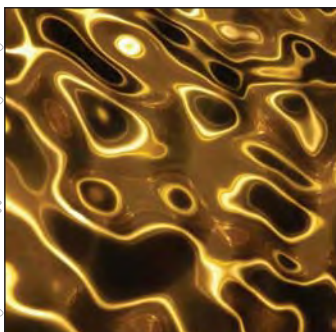
SM-WR101



SM-WR102



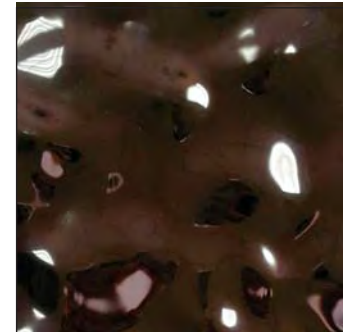
SM-WR103



SM-WR101-Gold



SM-WR102-Champagne



SM-WR103-Bronze

Stainless Steel water ripple panels will give you the effect of ripple on water. They are widely used for ceiling and wall interior & exterior cladding.



Interior SS wall panel

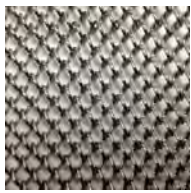


Interior SS ceiling panel

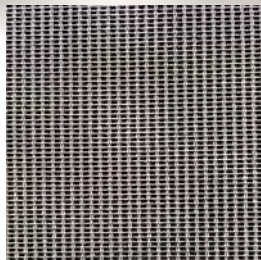


Exterior SS ceiling panel

Stainless Steel Architectural flexible Wire Mesh

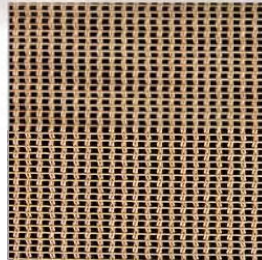


SM- 1810



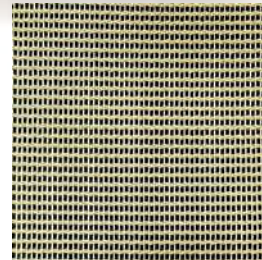
SM- 14305 (Silver)

Material: Stainless Steel 304, 316
Cable Diameter: 0.45mm x 3
Rod Diameter: 0.50 mm
Weight: 2.1 Kg/Sqm



SM-14305T

Material: Bronze
Cable Diameter: 0.45mm x 3
Rod Diameter: 0.50 mm
Weight: 2.3 Kg/Sqm



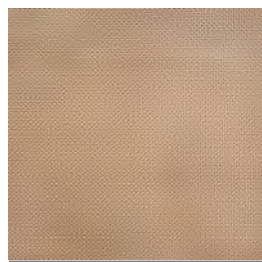
SM-14305T

Material: Brass
Cable Diameter: 0.45mm x 3
Rod Diameter: 0.50 mm
Weight: 2.3 Kg/Sqm



SM- 12050 (Silver)

Material: Stainless Steel 304, 316
Cable Diameter: 0.4mm
Rod Diameter: 0.0.3 mm
Weight: 1.93 Kg/Sqm



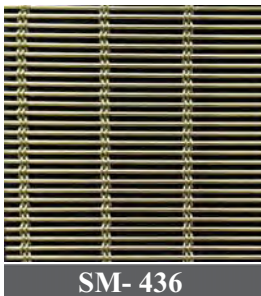
SM- 12130

Material: Bronze
Wire diameter: 0.21 mm
Weight: 0.68 Kg/Sqm



SM-2614 (Bronze)

Material: Stainless Steel 304, 316
Rod Diameter: 0.6 / 0.8 mm
Weight: 3.66 Kg/Sqm



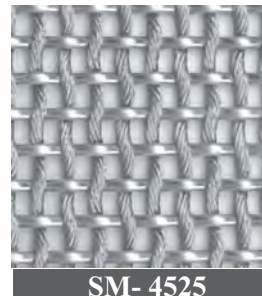
SM- 436

Material: SS 304, 316, Brass PVD
Open area: 44%
Weight: 7 Kg/Sqm
Cable Diameter: 1 mm x 4
Rod Diameter: 2 mm



SM- 11535

Material: SS 304, 316, Brass PVD
Open area: 51%
Weight: 5.53 Kg/Sqm
Cable Diameter: 2 mm x 1
Rod Diameter: 1.5 mm



SM- 4525

Material: Stainless Steel 304, 316
Rod Diameter: 5 mm
Cable Diameter: 2 mm
Weight: 10.02 Kg/Sqm

Metal Mesh are available in Stainless Steel grade 304 or 316 series (Depends on the design).
Maximum width depends on the pattern & may vary from 3 upto 8 meters.
Recommended pattern for the ceiling have an average weight of 2 ~ 6 Kg/m²

Applications: Building exterior facade, Store decoration, metal sunshade,
interior partition, restaurant divider, suspended ceiling, etc...

Stainless Steel rigid Woven Mesh



SM- 18395

Material: SS 304, 316/L
Warp & Weft Dia: 3 x 1.5mm
Warp & Weft pitch: 9.5mm
Weight: 7.6 Kg/Sqm



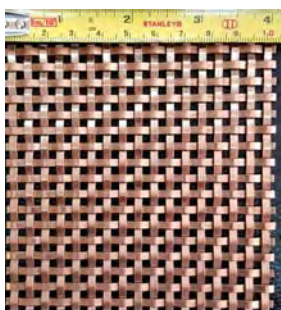
SM- 18395

Available color: Gold, Brass,
Silver, Bronze.....



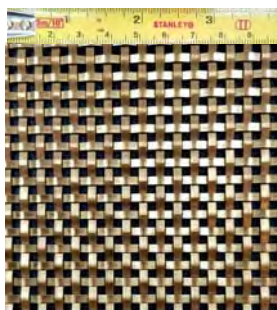
SM- 18395 (45°)

Color: Antique Copper



SM- 18913

Material: SS 304, 316/L
Warp & Weft Dia: 3 x 1mm
Warp & Weft pitch: 6mm
Weight: 8.05 Kg/Sqm



SM- 18913

Available color: Gold, Brass,
Silver, Bronze.....



SM- 18395 (45°)

Color: Antique Brass



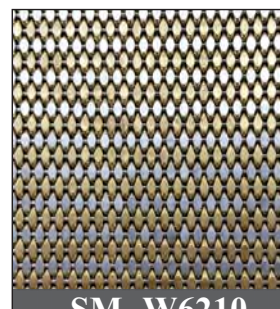
SM- W16148

Material: SS 304, 316/L
Warp Dia: 2.7mm x 1.6mm
Warp Dia: 1.5 mm
Weight: 14 Kg/Sqm



SM- W16210

Material: SS 304, 316/L
Warp Dia: 2.5
Warp Dia: 1.5 mm
Weight: 16 Kg/Sqm



SM- W6210

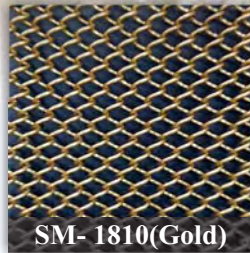
Material: SS 304, 316/L & Brass
Warp Dia: 2.5
Warp Dia: 1.5 mm
Weight: 19.9 Kg/Sqm

Applications: modern Elevator Cabins as Panels, railing, screen, ceiling, partition,
wall cladding , etc....

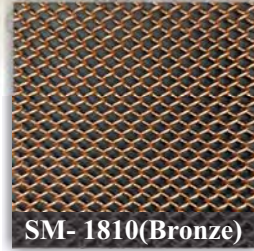
Metal mesh curtain

Decorative wire mesh, Chain & Bead are made from Aluminum alloy, Stainless Steel, Brass and other alloy material. It is widely used as curtains, dividers, screen, wall decoration, ceiling and much more. It is coming in different colors & unique texture.

1- Metal wire mesh



SM- 1810(Gold)



SM- 1810(Bronze)

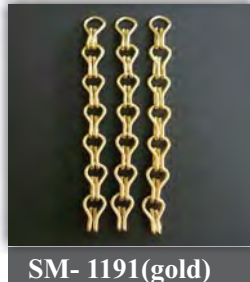


SM- 1810(Silver)

Material: Aluminum/S.S.
Wire diameter: 1.2mm
Aperture: 8mm
Max. height : 6 meters
Weight: 1.2Kg/Sqm

2- Metal chain:

Decorative chain link curtain is made from Aluminum, is rust- proof and lightweight.



SM- 1191(gold)

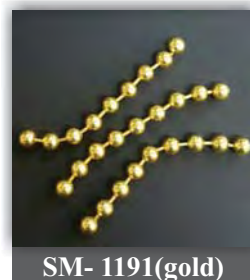


SM- 1191

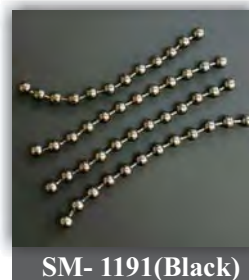
Material: Aluminum
Wire diameter: 1.0, 1.2mm
Hook width: 10mm
Hook Length: 23mm
Colors: silver, Black, bronze, gold, copper & etc....

3- Bead chain:

Decorative metal bead chain made of carbon steel or Stainless steel and it used as Curtain, divider, partition screen, wall decoration and etc...



SM- 1191(gold)



SM- 1191(Black)

Material: Carbon steel & Stainless steel
Ball size: 3 mm to 12 mm for carbon steel
3 mm to 8 mm for Stainless steel
Color: silver, gold, black, bronze or customized as per client color.

Features: easy to get through, no rust, easy to clean and durability.

Fabric Metal Mesh



SM- 13928 (Silver)

Material: Copper
Cable Diameter: 0.39mm
Rod Diameter: 0.3 mm
Weight: 2 Kg/Sqm
Thickness: 1 mm
Max width: 2 Meters or cut to size
Length : roll or cut to size



SM- 13928 (Gold)

Material: Copper
Cable Diameter: 0.39mm
Rod Diameter: 0.3 mm
Weight: 2 Kg/Sqm
Thickness: 1 mm
Max width: 2 Meters or cut to size
Length : roll or cut to size



SM- 13928 (Bronze)

Material: Copper
Cable Diameter: 0.39mm
Rod Diameter: 0.3 mm
Weight: 2 Kg/Sqm
Thickness: 1 mm
Max width: 2 Meters or cut to size
Length : roll or cut to size



SM- Mf 107T (Champagne)

Material: Copper & Nylon
Copper Dia.: 0.18 mm
Nylon Dia.: 0.15 mm
Weight: 0.8 Kg/Sqm
Thickness: 1 mm
Max width: 2 Meters or cut to size
Length : roll or cut to size



SM- Mf 103 (Copper)

Material: Copper & Nylon
Copper Dia.: 0.18 mm
Nylon Dia.: 0.15 mm
Weight: 0.8 Kg/Sqm
Thickness: 1 mm
Max width: 2 Meters or cut to size
Length : roll or cut to size



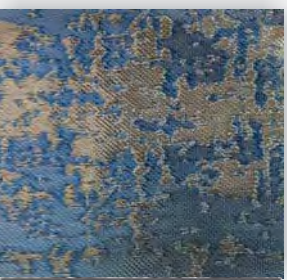
SM- Mf 109A (Black)

Material: Copper & Nylon
Copper Dia.: 0.18 mm
Nylon Dia.: 0.15 mm
Weight: 0.8 Kg/Sqm
Thickness: 1 mm
Max width: 2 Meters or cut to size
Length : roll or cut to size



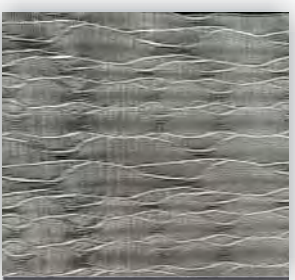
SM- Mf 109E (Gold)

Material: Copper & Nylon
Copper Dia.: 0.18 mm
Nylon Dia.: 0.15 mm
Weight: 0.8 Kg/Sqm
Thickness: 1 mm
Max width: 2 Meters or cut to size
Length : roll or cut to size



SM- Mf 107C (Blue)

Material: Copper & Nylon
Copper Dia.: 0.18 mm
Nylon Dia.: 0.15 mm
Weight: 0.8 Kg/Sqm
Thickness: 1 mm
Max width: 2 Meters or cut to size
Length : roll or cut to size



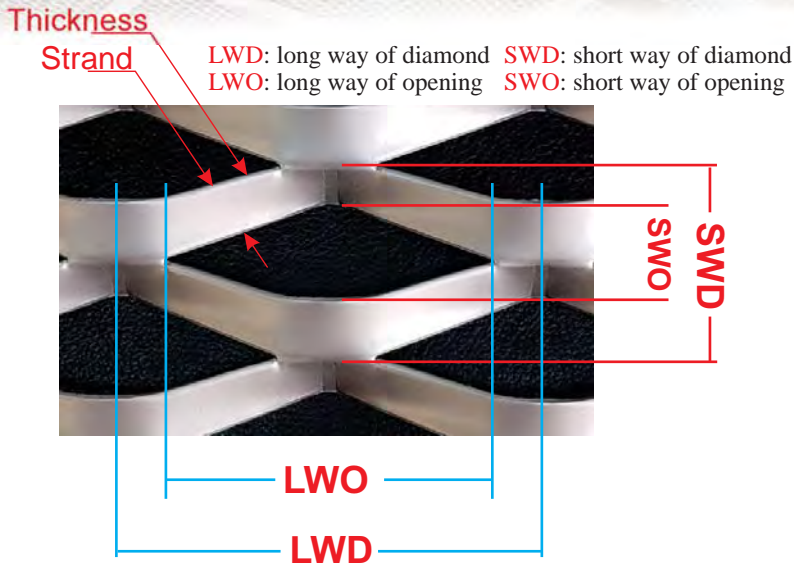
SM- Mf 126 (Silver)

Material: Copper & Nylon
Copper Dia.: 0.18 mm
Nylon Dia.: 0.15 mm
Weight: 0.8 Kg/Sqm
Thickness: 1 mm
Max width: 2 Meters or cut to size
Length : roll or cut to size

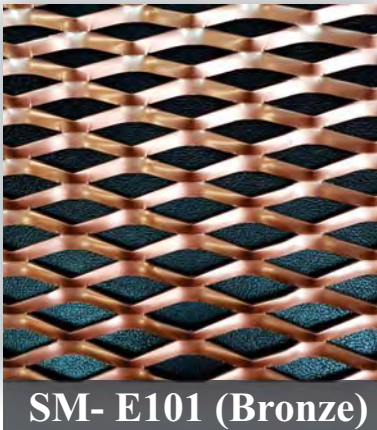
Applications: wall cladding, glass lamination panel for partitions, Elevator cabin & dividers.

Expandable Metal Mesh

Expandable metal mesh can be produced from different materials such as Aluminum, Stainless Steel, Brass, copper, steel & Iron.
Expandable metal mesh can be used in different applications like False ceiling, Facades, Window & door screen, wall cladding, partition and etc....



Material: Aluminum
SWD: 45 mm, Thickness: 2 mm
Strand: 14 mm
LWD: 100 mm



Material: Aluminum
Thickness: 2 mm
Strand: 14 mm
LWD: 100 mm
SWD: 45 mm



Material: Aluminum
Thickness: 1mm
Strand: 8 mm
LWD: 60 mm
SWD: 26 mm



Material: Aluminum
Thickness: 0.8 mm
Strand: 3 mm
LWD: 30 mm
SWD: 18 mm



Material: Aluminum/Steel/SS
Thickness: 1mm
Strand: 2 mm
LWD: 20 mm
SWD: 15 mm



Material: Aluminum
Thickness: 1mm
Strand: 5 mm
LWD: 60 mm
SWD: 15 mm



Material: Aluminum
Thickness: 1mm
Strand: 2 mm
LWD: 10 mm
SWD: 10 mm

Stainless Steel Mosaic Tiles

Stainless Steel tiles are an ideal wall covering for the kitchen or Bathroom. They are easy to install and have a more unique result than plain walls. Our Stainless Steel mosaic tiles are constructed by capped piece of Stainless Steel over an equal sized ceramic tile. We offer tiles in a handful of colors and finishes.



SM-TS1101

SS Square Mosaic
Silver brushed finish
Size: 305 x 305 mm



SM-TS1102

SS Square Mosaic
Gold brushed finish
Size: 305 x 305 mm



SM-TS1103

SS Square Mosaic
Black brushed finish
Size: 305 x 305 mm



SM-TB2101

SS Brick pattern Mosaic
Silver brushed finish
Size: 262 x 305 mm



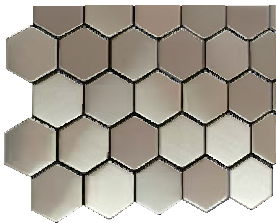
SM-TB2102

SS Brick pattern Mosaic
Gold brushed finish
Size: 262 x 305 mm



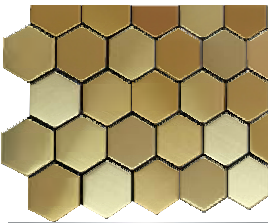
SM-TB2106

SS Brick pattern Mosaic
Copper brushed finish
Size: 262 x 305 mm



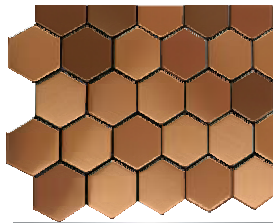
SM-TH3101

Hexagon pattern Mosaic
Silver Brushed finish
Size: 306 x 316 mm



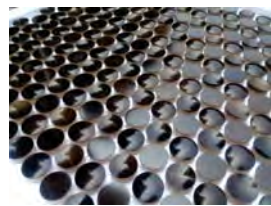
SM-TH3102

Hexagon pattern Mosaic
Gold brushed finish
Size: 306 x 316 mm



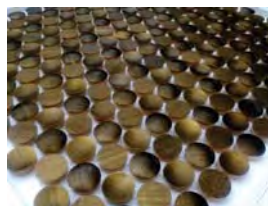
SM-TH3104

Hexagon pattern Mosaic
Bronze brushed finish
Size: 306 x 316 mm



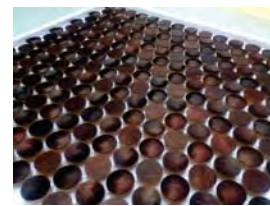
SM-TC4104/2

Circle pattern Mosaic
Antique dark bronze brushed finish
Size: 292 x 313 mm



SM-TC4105

Circle pattern Mosaic
Antique Brass brushed finish
Size: 292 x 313 mm



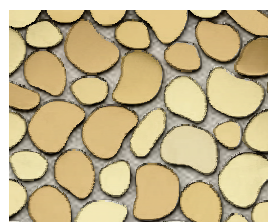
SM-TC4104

Circle pattern Mosaic
Antique Bronze Brushed finish
Size: 292 x 313 mm



SM-TS5101

Sea stone pattern Mosaic
Silver Brushed finish
Size: 305 x 305 mm



SM-TS5102

Sea stone pattern Mosaic
Gold Brushed finish
Size: 305 x 305 mm



SM-TS5104

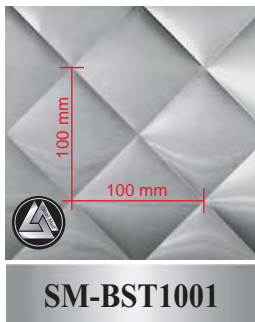
Sea stone pattern Mosaic
Bronze Brushed finish
Size: 305 x 305 mm

Stainless Steel Backsplash Mosaic tiles

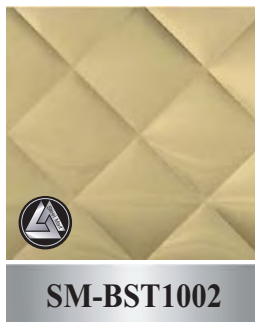
Stainless steel has become one of the most popular options available for appliances, and just about anywhere a clean, shiny, increase the resale value, all while making sure that cleanliness is a top priority. After all, there is no paint to wear off, it won't rust, and your kitchen will be far less likely to harbor bacteria and other agents that can lead to illness.



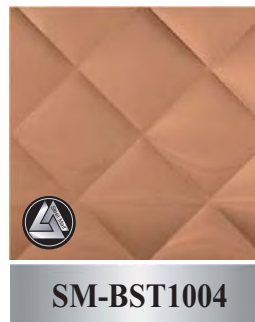
Stainless Steel Back splash diamond sheet(Anti-finger print)



Diamond pattern Sheet
Silver Brushed finish
Size: 1219 x 2438mm
Thick.: 0.60 mm



Diamond pattern Sheet
Gold Brushed finish
Size: 1219 x 2438mm
Thick.: 0.60 mm



Diamond pattern Sheet
Bronze Brushed finish
Size: 1219 x 2438mm
Thick.: 0.60 mm



www.steelmartfze.com

Steel Mart FZE
Jafza 12-G32
Jebel Ali Free Zone
Dubai-UAE
Tel: +971 4 8875545
Fax: +971 4 8875546



info@steelmartfze.com
www.steelmartfze.com