

# SMART MECHANICAL EQUIPMENT TRADING LLC



smet

# Overview

Founded in 2006, Smart Mechanical Equipment Trading L.L.C. (**smet**) is a well - established, Middle East and Indian Sub-continent operating firm, based in UAE, with current operational Head Quarters in Dubai, having an excellent reputation for bringing the best Equipment, Spares and Support Services to the end-user directly and through Procurement Consultancy Services.

**smet** experts bring in a combined experience and knowledge of several decades in Supplies, Support Services and Procurement Consultancy in almost every industrial field. **smet** has the capacity and resources to obtain supplies and support services from various sources around the globe and provide the same to our clients with optimum efficiency and cost.

**smet** specializes in providing complete solutions after a thorough understanding and evaluation of customer's requirements and specifications. **smet** also aspires to bring quality products into the Middle East and Indian sub-continent markets through agencies and representations.

Apart from renowned brands of industrial VRLA and NiCd batteries like YUASA, EXIDE, LEOCH and TWD, **smet** has recently extended the agencies and representations in instrumentation, Test & Measurement in RF field.



# Overview

**smet** has been in business for 15 glorious years and its head office in Dubai. **smet** has consistently sought to deliver quality work and to undertake the timely completion of contracts for its customers.

Mr. Ajith Menon, with nearly 45 years of AGCC working background, manages **smet**: with the assistance of **smet team**, ensures excellence at all operational levels. Smet team's combined skills and experience help **smet** to be one of the major battery distribution and related Service Providers companies in UAE.

We are proud to be associated with



and



Industrial Batteries,

manufactured in different parts of the world. Ex-stock items from these and other Industrial Batteries are supplied from our 24/7 air-conditioned warehouse located in Dubai.

**smet's** qualified and factory trained engineers provide complete technical, sizing, configuration, warranty and after-sales support in this region, for the products sold.

Batteries are random-tested for voltage output, prior to delivery.



# **smet SERVES MAJOR INDUSTRIES IN UAE AND MIDDLE EAST REGION.**



**Automotive**

**Marine and Shipping**

**Aviation**

**Oil and Gas**

**Construction**

**Telecom**

**Industrial Infrastructure**

**Water and Electricity**



# Why We?

Driven by a common vision, sharing common values and inspired by a Spirit of Innovation, **smet** team has unwavering dedication to put **smet** at the forefront of turnkey solution providers for Industrial Batteries in UAE and ME region.

Our mission is to obtain best quality products and services direct from the producers and suppliers all around the world and provide the same in the most efficient and economical manner that is satisfying to our customers.

## Our Team

**smet** is managed by an experienced team of professionals committed to ethical and the most effective technical & commercial practices. Our technical and sales teams consist of highly qualified and sufficiently experienced Engineers to support the customers for any of their requirements in our specialized fields.

Our field service team brings over many years of combined experience to ensure that you are getting the very best expertise when you call **smet** professionals to provide support for your batteries and / or Energy Storage requirements.



# Our Team

In addition, **smet** has a talented group of customer oriented support and Logistics staff to serve you. We are confident that you will be impressed by the professional, responsive services that you will receive the first and every time you call upon **smet**;

Customer confidence leads **smet** to maintain our position as leading industrial batteries distributors and support providers in this region.

## Our Promise

We are committed to improving the quality of our products and services for corporate and individual clients, on a continuous basis. We do not rest on our accomplishments, but rather utilize them to do the best that we can for our customers.



# Team Spirit

We work across boundaries, together with all our sources to meet the needs of our clientele and help them to win. We create a “can do” spirit !!

Our customers are our partners and if they win, we win..



# OUR RANGES OF PRODUCTS & SERVICES

## INDUSTRIAL BATTERIES

- AGM
- Gel
- NiCd

## ELECTRICAL EQUIPMENT

- PSU
  - UPS
  - Battery Chargers
  - Stabilizers
  - PDUs
  - Surge Protectors
  - Generators-Heavy Duty and Portable
  - Electric Cables - Customer Specified
- Service & Support for all the above





# Pioneer in Industrial Battery Distribution in UAE



# Our Main Products

**INDUSTRIAL VRLA BATTERIES** for various applications.



- AGM, NiCd, Lithium



- AGM, GEL, Lithium



- AGM, GEL, Lithium



# Our Main Products

## NiCd - Nickel-Cadmium Batteries



NiCd BATTERY PACKS

## UPS - Uninterruptible Power Supply



UPS Systems



# YUASA INDUSTRIAL BATTERIES

- Yuasa batteries are 2,4, 6 and 12 Volts Types.
- Batteries in range between 0.8AH - 200AH.
- Design Life - 5 - 15 yrs. depending upon series
- Battery Manufactured in Taiwan, Vietnam , China and UK YUASA factories.
- Applications - Standby and Cyclic Power (UPS, Telecom, Renewable Energy, Fire and Security, Emergency Lighting, Energy Storage, Floor Cleaning, Golf and Mobility and Aerial Access)

## Battery Series

- ❖ NP / NPH series
- ❖ NPL series
- ❖ SW / SWL series
- ❖ EN /ENL Series
- ❖ FXH series
- ❖ REC series
- ❖ Ni-Cd and Ni-MH
- ❖ LITHIUM BATTERIES - High Capacity
- ❖ Battery accessories like testers and chargers



# EXIDE INDUSTRIAL BATTERIES

- Exide batteries are 2, 6 and 12 Volts Types.
- Design Life - 5 -20 yrs. depending upon series
- AGM and GEL Technologies
- County of Origin - Europe / USA - China for PowerFit series
- Applications - Standby and Cyclic Power (UPS, Telecom, Renewable Energy, Fire and Security, Emergency Lighting, Energy Storage, Emergency and Security, Medical Equipment)

## Battery Series

- ❖ Marathon L/XL / FT
- ❖ Sprinter P/XP / FT
- ❖ Sonnenschein
- ❖ Absolyte
- ❖ PowerFit



# LEOCH INDUSTRIAL BATTERIES

- Leoch batteries are 2,4, 6 and 12 Volts Types.
- Batteries in range between 0.8AH - 250AH.
- Design Life - 5 - 20 yrs. depending upon series
- AGM and GEL Technologies
- Battery Manufactured in Vietnam and China factories.
- Applications - Standby and Cyclic Power (UPS, Telecom, Renewable Energy, Fire and Security, Emergency Lighting, Energy Storage, Deep Cycle Application).

## Battery Series

- ❖ LP / LPL /LPF
- ❖ LPG / LPGS / LPFG
- ❖ XP / LHR
- ❖ Pure lead PLH / PLC series
- ❖ LHT - High temperature-basic configuration @35°C



# TWD – NiCd Rechargeable Batteries



## NICD BATTERY



### Features:

1. Long cycle life: 1000 cycles.
2. High efficient charge and discharge: 75% discharge available for high drain battery.
3. Wide operating temperature range: -20°C ~ 70°C.
4. Excellent performance: 10% reserve capacity after storage at 20°C for 1 month.

### Applications:

1. Telecommunication devices: cordless phone, interphone, and fax machine, etc.
2. Audio visual equipment: camera, camcorder, portable DVD and VCD player, etc.
3. Lighting: Emergency lighting, solar light, nightlight, flashlight, etc.
4. Electric toys: Wireless remote control toy car, remote, etc.

Code	Model No.	Rated Capacity (mAh)	Standard Voltage (V)	Dimensions (mm)	Weight (g)	Standard Charge Current (mA)	Standard Charge Time (h)	Standard Charge Capacity (mAh)	Max. Discharge Current (mA)	Max. Discharge Time (h)
AAA	TAAA300	300	1.2	12.2	44.0	30	10	300	1.2	9.0
	TAAA400	400	1.2	14.1	29.0	40	10	400	1.2	11.0
	TAA600	600	1.2	14.1	49.0	60	10	600	1.2	16.0
	TAA700	700	1.2	14.1	49.0	70	10	700	1.2	17.5
AA	TAA500	500	1.2	14.1	49.0	50	10	500	1.2	18.5
	TAA550	550	1.2	14.1	49.0	55	10	550	1.2	19.5
	TAA1000	1000	1.2	14.1	69.0	100	10	1000	1.2	25.0
	TAA1200	1200	1.2	16.7	83.0	120	10	1200	1.2	24.8
C	TCCA1300	1300	1.2	22.5	42.5	130	10	1300	1.2	37.0
	TCCA1500	1500	1.2	22.5	42.5	150	10	1500	1.2	40.0
	TCCA1800	1800	1.2	22.5	42.5	180	10	1800	1.2	44.0
	TCCA2000	2000	1.2	22.5	42.5	200	10	2000	1.2	48.0
D	TCCA3000	3000	1.2	28.5	49.0	300	10	3000	1.2	58.0
	TCCA3500	3500	1.2	28.5	49.0	350	10	3500	1.2	62.0
	TCCA4000	4000	1.2	28.5	49.0	400	10	4000	1.2	66.0
	TCCA4500	4500	1.2	28.5	49.0	450	10	4500	1.2	70.0
E	TCCA5000	5000	1.2	32.0	60.0	500	10	5000	1.2	78.0
	TCCA5500	5500	1.2	32.0	60.0	550	10	5500	1.2	82.0
	TCCA6000	6000	1.2	32.0	60.0	600	10	6000	1.2	86.0
	TCCA6500	6500	1.2	32.0	60.0	650	10	6500	1.2	90.0

## NIMH BATTERY

TWD®



### Features:

1. Long cycle life: 1000 cycles.
2. High efficient charge and discharge: 75% discharge available for high drain battery.
3. Wide operating temperature range: -20°C ~ 70°C.
4. Excellent performance: 10% reserve capacity after storage at 20°C for 1 month.
5. Excellent safety: safety valve system to release excess pressure under misuse.
6. No memory effect.
7. Environmentally friendly.

Code	Model No.	Rated Capacity (mAh)	Standard Voltage (V)	Dimensions (mm)	Weight (g)	Standard Charge Current (mA)	Standard Charge Time (h)	Standard Charge Capacity (mAh)	Max. Discharge Current (mA)	Max. Discharge Time (h)
AAA	TAAA300	300	1.2	12.2	44.0	30	10	300	1.2	9.0
	TAAA400	400	1.2	14.1	29.0	40	10	400	1.2	11.0
	TAAA600	600	1.2	14.1	49.0	60	10	600	1.2	16.0
	TAAA700	700	1.2	14.1	49.0	70	10	700	1.2	17.5
AA	TAA500	500	1.2	14.1	49.0	50	10	500	1.2	18.5
	TAA550	550	1.2	14.1	49.0	55	10	550	1.2	19.5
	TAA1000	1000	1.2	14.1	69.0	100	10	1000	1.2	25.0
	TAA1200	1200	1.2	16.7	83.0	120	10	1200	1.2	24.8
C	TCCA1300	1300	1.2	22.5	42.5	130	10	1300	1.2	37.0
	TCCA1500	1500	1.2	22.5	42.5	150	10	1500	1.2	40.0
	TCCA1800	1800	1.2	22.5	42.5	180	10	1800	1.2	44.0
	TCCA2000	2000	1.2	22.5	42.5	200	10	2000	1.2	48.0
D	TCCA3000	3000	1.2	28.5	49.0	300	10	3000	1.2	58.0
	TCCA3500	3500	1.2	28.5	49.0	350	10	3500	1.2	62.0
	TCCA4000	4000	1.2	28.5	49.0	400	10	4000	1.2	66.0
	TCCA4500	4500	1.2	28.5	49.0	450	10	4500	1.2	70.0
E	TCCA5000	5000	1.2	32.0	60.0	500	10	5000	1.2	78.0
	TCCA5500	5500	1.2	32.0	60.0	550	10	5500	1.2	82.0
	TCCA6000	6000	1.2	32.0	60.0	600	10	6000	1.2	86.0
	TCCA6500	6500	1.2	32.0	60.0	650	10	6500	1.2	90.0



## HIGH TEMPERATURE BATTERY

### Features:

1. High break current: 100A (20°C)
2. High operating temperature: 0°C ~ 10°C

### Application:

Emergency lighting which requires batteries are continuous charged at the current to provide back-up power in case of a main power failure.



## LOW SELF-DISCHARGE BATTERY

### Applications:

Electric clocks, digital cameras, etc.



smet

# TWD – NiCd Rechargeable Batteries



## FLASHLIGHT BATTERY

- Features:
  1. Superior charge and discharge performance
  2. Low internal resistance
  3. High capacity retention
  4. Wide operating temperature range
  5. Long cycle life

Model	Capacity (mAh)	Discharge Current (mA)	Operating Temperature (°C)
AA	1200	1.40	100
AAA	900	0.90	100
AA	1200	1.40	100
AAA	900	0.90	100



## HIGH DRAIN DISCHARGE BATTERY

- Features:
  1. Large current discharge: more than 80% of rated capacity could be released under the discharge condition of 10A and 100°C
  2. Low resistance and low platform discharge voltage
- Applications:
  1. Power Tools: cement mixer, electric drill, sandblaster, saw, etc.
  2. Grinding machine
  3. Electric toys

Model	Capacity (mAh)	Discharge Current (mA)	Operating Temperature (°C)
74-000000	800	1.0	100
74-000001	1000	1.0	100
74-000002	1200	1.0	100
74-000003	1500	1.0	100
74-000004	2000	1.0	100
74-000005	2500	1.0	100
74-000006	3000	1.0	100
74-000007	3500	1.0	100
74-000008	4000	1.0	100
74-000009	4500	1.0	100
74-000010	5000	1.0	100



## TELE COMMUNICATION BATTERY

- Applications: Telecommunication device such as cordless phone, telephone and fax machine

Model	Capacity (mAh)	Discharge Current (mA)	Operating Temperature (°C)
74-000011	200	1.0	100
74-000012	300	1.0	100
74-000013	400	1.0	100
74-000014	500	1.0	100
74-000015	600	1.0	100
74-000016	700	1.0	100
74-000017	800	1.0	100
74-000018	900	1.0	100
74-000019	1000	1.0	100
74-000020	1200	1.0	100



## LITHIUM BATTERY

- Features:
  1. High energy density
  2. High voltage
  3. Long Cycle Life: 500-2000 cycles
  4. Low self-discharge rate: 10% initial capacity after storage at 25°C for 1 month
  5. Wide operating temperature range: -20°C-60°C
  6. No memory effect

Model	Capacity (mAh)	Discharge Current (mA)	Operating Temperature (°C)
74-000021	200	1.0	100
74-000022	300	1.0	100
74-000023	400	1.0	100
74-000024	500	1.0	100
74-000025	600	1.0	100
74-000026	700	1.0	100
74-000027	800	1.0	100
74-000028	900	1.0	100
74-000029	1000	1.0	100
74-000030	1200	1.0	100



# BPE - UPS SYSTEMS



## Line Interactive UPS /Solar & ESS



- BP Series (650VA-2200VA)
- UPSX Series (1VA-3KVA)
- SOLAR ON GRID/OFF GRID/HYBRID
- ESS Battery MWH, KWH solutions

## Online UPS Single Phase O/P



- MF Series (1-3KVA)
- MF Series (6-20KVA)
- MP Rack mount (1k-40KVA)
- PB Series (5-15KVA)
- HXi Series (10-20-30KVA)
- DS Series (5-10KVA)
- DS II Series (10-40KVA)

## Online UPS Three Phase O/P



- BEC Series (30-200KVA)
- CP Series (5-20-30KVA)
- EPX /EP+ Series (10-800KVA)
- GT Series (10-30KVA)
- GTM Series (40-480KVA)
- GTC Series (120-800KVA)

## Modular / Rack Mount



- MP Series (1-3KVA)
- MP Series (6-20-80KVA)
- PS Series (6-1560KVA)
- BPE Data Cube for Data center



# OTHER ELECTRICAL EQUIPMENT AND ACCESSORIES

- UPS
  - POWERSOLVE (XP)
  - POWER SUPPLIES
  - ELECTRICAL CABLES AND CONNECTORS
  - POWER DISTRIBUTION UNITS (PDUs)
  - GENERATORS-HEAVY DUTY AND PORTABLE
- Other customer built and / or customer specified items



# MECHANICAL EQUIPMENT & INSTRUMENTATION

- Air Compressors-Oil Free
- Welding & Cutting Equipments
- Welding Tools and Accessories
- Electric and Manual Stackers, Scissor Lift Tables
- Wireless Monitoring and Management
- Application Sensors
- Light & Heavy Drills (Excel, Rong-Fu, Makita etc.)



# TEST & MEASUREMENT EQUIPMENT

- Telecom Network
- Aviation and MRO Test Solution
- Fiber Cable Network testing
- Fiber Network Monitoring
- Mobile & Wireless Network Test Solution
- Fixed Network & Datacenter Test Solution
- Copper Cable ICT Test solution; Cat6, Cat7, Cat8 supported, Ethernet Cable Certifier
- RF & Satellite Network testing
- RF Safety and Conformance Test Solution



# TEST & MEASUREMENT EQUIPMENT

- Electrical & Instrumentation Cables
- Cable Locators
- Fibre Optic Cables
- OTDRs / Fusion Splicers/Other Test Equipment
- (VeEX, Lightel US)
- Fibre Optic Connectors & Accessories
- (Fusion Splicers, Connectors, Pigtails etc.).



# TEST & MEASUREMENT EQUIPMENT

## LAVERSAB



Aircraft Avionics Test Equipment provides ADTS, Pitot Static test system and bench top models for instrument overhaul workshops for Aviation sectors; Commercial and Military.

Pitot Static Tester and Air Data Test Sets primarily used in the Commercial, Business and General Aviation sectors, for both leak test an aircraft's pitot-static system as well as to test and verify an aircraft's instruments by simulating the altitude and speed of aircraft while still on the flight line.

# T&M FOR AVIATION & MRO

- Air Data Test Set for Pitot Static System
- Aircraft Leak Test
- Altitude and Mach Speed Test
- RVSM Support
- Aircrafts Types-Business, Commercial, Military





# OTHER T&M PRODUCTS



VeEX TX300S Transport Expert



MTTplus Multiservice Test Solution



RXT1200 - Multiservice Test System



MX100, TX130 Series



**Test and Measurement Solutions  
for Communication Equipment  
and Networks**





# OTHER T&M PRODUCTS

## NETWORK TOOLS & SUPPLIES (FIBER, RF, MICROWAVE, AVIATION)

- RF Cable, Cable Assembly, Connector, Adapter, Waveguide Etc.
- FO Accessory And Supplies (Includes Patch Cord, Cable, Connectors Etc.)



# TEST AND MEASUREMENT PRODUCTS



# TEST AND MEASUREMENT PRODUCTS



- Provides the 'Next Generation' of telecommunications test solutions. The combined hardware and software platforms are used in the laboratories of major multinational companies to develop, analyze, test and demonstrate many types of Telecom Equipment.



# TEST AND MEASUREMENT PRODUCTS



- Precision Antennas - PCTEL designs and manufactures precision antennas and offers in-house wireless product development including design, testing, radio integration, and manufacturing capabilities.
- PCTEL antennas are deployed in small cells, enterprise Wi-Fi access points, fleet management and transit systems, and in equipment and devices for the Industrial Internet of Things (IIoT). Two - RF Test and Measurement, RF test & measurement tools - to improve the performance of wireless networks globally, with a focus on LTE, public safety, and emerging 5G technologies. Tools includes RF Scanner, CW Transmitter, Interference locating system used to analyze, design, and optimize next generation wireless networks.



# TEST AND MEASUREMENT PRODUCTS



- Provides dependable P25 and TETRA compliant (Terrestrial Trunked Radio) surge protection solutions for global LMR applications, enabling secure, reliable and interoperable networks when they are needed most.

LIGHTEL



- Provided solutions include products for Fiber inspection and certification
  - Fiber inspection probe system, for all fiber types
  - Inspection probe with WiFi, OPM etc.



# OTHER TEST & MEASUREMENT EQUIPMENT

1. GENERAL ELECTRICAL AND ELECTRONIC TEST EQUIPMENT
2. ESD SYSEMS, ACCESSORIES AND COMPONENTS
3. SOLDERING/DESOLDERING EQUIPMENT
4. RF TEST EQUIPMENT
5. PRESSURE, TEMPERATURE, GAS MONITORS
6. EQUIPMENT TO MEASURE CHEMICAL PROPERTIES
7. EQUIPMENT TO MEASURE DIMENSION
8. WEIGHT MEASUREING SYSTEMS
9. MICROSCOPES AND MAGNIFIERS
10. OSCILLOSCOPES AND FUNCTION GENERATORS
11. CUSTOMER SPECIFIED EQUIPMENT AND COMPONENTS
12. FIXED AND WIRELESS TELECOM T & M SYSTEMS AND EQUIPMENT
13. CSPs, NEMs, SIS AVIATION / GROUND SUPPORT TEST SOLUTIONS
14. FTTx / GPON SOLUTIONS
15. STRUCTURED CABLE / SECURITY NETWORK T & M EQUIPMENT .



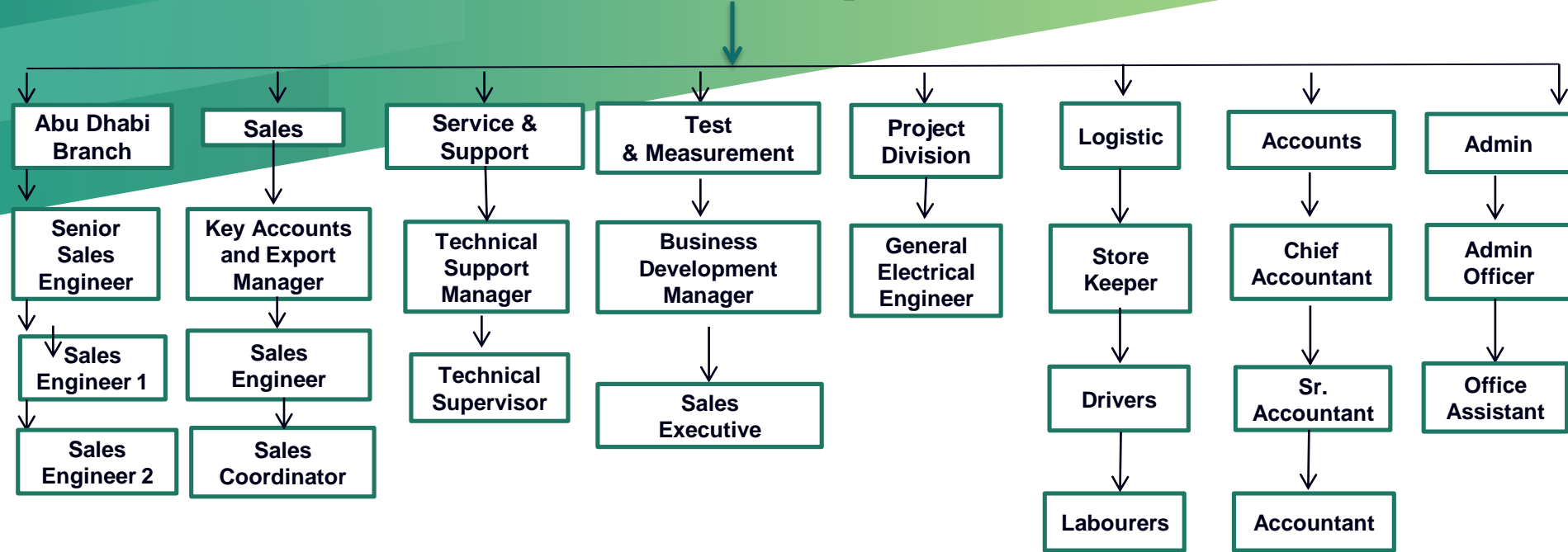
# CERTIFICATION

- ISO 9001:2015
- ISO 14001: 2015
- ISO 45001:2018
- HSE & QUALITY POLICY
- ICV 3.0



# Organizational Chart

## General Manager





# Location

## United Arab Emirates



**DXB**

Office 601 & 602,  
Al Barsha Business  
Centre,  
Al Barsha 1st Street,  
Near Centro Barsha,  
P.O. Box 390136, Dubai

Ras al-Khaimah

Umm al-Quwain

Ajman

Sharjah

Dubai

Fujairah

Khawr Fakkan

Al Fujayreh

Kalba

Ras al-Khaimah

Dubai

**AUH**

Abu Dhabi

Office No. M4, Building  
No.16, Sector E-9/02 Plot  
nNo.C-82, Al Danah Zone,  
Landmark - Behind Lu Lu  
Salam St,  
P.O. Box 45163,  
Abu Dhabi

Activate W  
Go to PC setti



**smet**

**Leading  
Industrial  
Battery  
Distributor and  
Service Provider  
in UAE and ME**

**Hundreds of  
Happy  
Customers**

**ISO & ICV  
Certified**



# SMART MECHANICAL EQUIPMENT TRADING L.L.C.

Office No. M4, Building No.16, Sector E-9/02 Plot nNo.C-82, Al Danah Zone, Landmark - Behind Lu Lu Salam St,  
P.O. Box 45163, Abu Dhabi, United Arab Emirates.

Tel: +971 (0)26778181, Fax: +971 (0)26771167

E-mail: [salesauh@smetme.ae](mailto:salesauh@smetme.ae)

Location:- <https://goo.gl/maps/KK4gqnqN4h6J4DCD9>

## SMET ELECTRICAL FITTINGS TRADING LLC

Office 601 & 602, Al Barsha Business Centre, Al Barsha 1st Street, Near Centro Barsha,  
P.O. Box No. 390136, Dubai, United Arab Emirates.

Contact No. +971 (0)48842678 | Fax No. +971 (0)26771167

E-mail: [info@smetme.ae](mailto:info@smetme.ae) **Website** <https://smetme.com/>

Location:- <https://goo.gl/maps/ijZbV36VuMJdThTA8>

**Mr. Ajith Menon**

**General Manager**

Mob: + 971 (0) 50 669 7798

Mob: + 971 (0) 55 443 7959

[amenon@smetme.ae](mailto:amenon@smetme.ae)

**Mr. Nirmal Ganesh**

**Sales Manager**

Mob: +971 (0) 50 777 4015

[nirmal@smetme.ae](mailto:nirmal@smetme.ae)

**Ms. Mamatha Sumesh**

**Key Accounts & Export Manager**

Mob: + 971 (0) 55 390 8172

[mamatha@smetme.ae](mailto:mamatha@smetme.ae)



# Thank You



smet