

التقنيات المتعددة للصناعات الهندسية ذ.م.م
MULTI - TECH ENGINEERING INDUSTRIES L.L.C.

P. o. Box: 69849, Sharjah Tel: +97165360003, Fax: +97165360033, multi@multitech.ae, www.multitech.ae

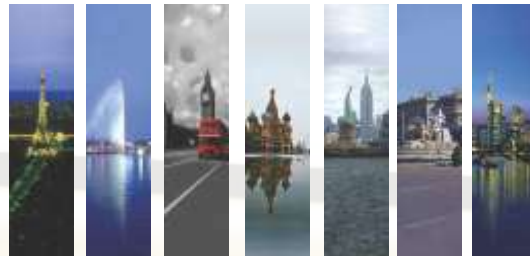


PRESS RELEASE

FRANKFURT
13th of April
2014



BIDGROUPONE



Building better business reputation worldwide

International Quality Convention - International Arch of Europe - Frankfurt 2014

Presentation of Awards to companies from 49 countries around the world for achievements in Quality and Excellence.

Multi-Tech Engineering Industries

received the International Arch of Europe Award in the Gold Category

Recognized for Commitment to Quality, Leadership, Technology and Innovation, Multi-Tech Engineering Industries represents success for United Arab Emirates in the business world.

The IAE International Arch of Europe for Quality and Technology Award acknowledges the strong commitment to quality and excellence. Mr. Giri DHARMARAJAN LALITHA, Director, received the IAE at the InterContinental Convention Hall, from the President of BID Jose E. Prieto. Multi-Tech Engineering Industries makes quality a core focus for continuous improvement of management to maintain leadership in its sector and community.

Multi-Tech Engineering Industries from United Arab Emirates, winner of the BID International Arch of Europe for Quality and Technology Award in Frankfurt 2014

Frankfurt hosted this year's BID International Arch of Europe Convention, where professionals and business leaders from around the world gathered to recognize excellence and success. In particular, the convention celebrated quality in business and operations. Award winners demonstrated commitment to the criteria of the QC100 TQM Model, which helps bolster customer satisfaction and cost efficiency across all areas of operation.

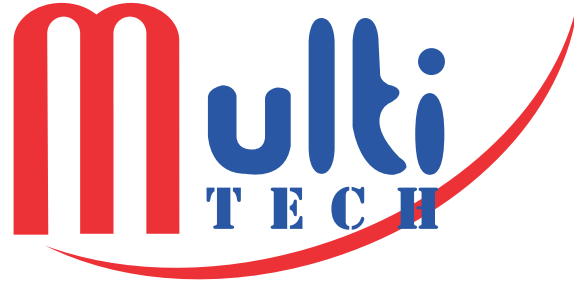
Among this year's winners, Giri Dharmarajan Lalitha and Sajith Jose Plamoottil of Multi-Tech Engineering Industries, from United Arab Emirates, received the International Arch of Europe for Quality and Technology Award in the Gold Category at the BID Quality Convention in Frankfurt. The organization has made huge strides this year as a leader not only within its sector, but also in United Arab Emirates. The Award came as an ideal way to celebrate this past year's successes while looking forward to putting quality first in the year to come.

BID chose Frankfurt, the true financial heart of Germany, as the site of this Awards Presentation. Frankfurt represents communication among countries and its influence is reflected in companies where multiculturalism shows that everyone can work together towards a greater good. Frankfurt is a city for corporate communication and services. The governing bodies of the European Central Bank and the European System of Central Banks, which are responsible for managing the world's second largest economy, the Euro area, have their headquarters in Frankfurt and indeed is the perfect site for BID's International Quality Convention.



Multi-Tech Engineering Industries won the International Arch of Europe for Quality and Technology Award in the Gold category in Frankfurt in the presence of leaders and representatives from 49 countries at the International Arch of Europe Convention. The prestigious award is presented in recognition of business excellence and innovation. From left to right: Alfonso Casal, Scientific Director of BID, Giri Dharmarajan Lalitha, Director of Multi-Tech Engineering Industries, Jose E. Prieto, President and CEO of BID, Sajith Jose Plamoottil, Production Manager of Multi-Tech Engineering Industries and Norman Ingle, President of the Quality Mix.

Giri Dharmarajan Lalitha stood before the gathering of international leaders, sharing the company's achievements to date as well as its future ambitions and goals. Despite the difficult current global economic climate, Multi-Tech Engineering Industries strives to excel in quality each day, creating a competitive advantage in its industry. For this reason, Multi-Tech Engineering Industries won the 2014 BID International Arch of Europe for Quality and Technology Award in Frankfurt. The Award is presented by BID to those companies and organizations from around the world that best adhere to excellence and innovation in their practices, putting quality first at all levels of organization.



التقنيات المتعددة للصناعات الهندسية ذ.م.م
MULTI - TECH ENGINEERING INDUSTRIES L.L.C.

COMPANY PROFILE

Section 1: Introduction	5
Section 2: Projects / Clients	8
Section 3: Resources	18
Section 4: HSE Management System	24
Section 5: Quality Management System	30
Section 6: Company Plans / Vision	42
Section 7: Selected Project's Photo Gallery	44
Section 8: Legal Documents / Bankers / Contacts	83
Section 9: location map	91

INTRODUCTION

1.1: Company Information

Multi - Tech Engineering Industries L.L.C. (MTEI) was established in the first half of the year 2007 in Sharjah, United Arab Emirates, with its line of operations being in design, fabrication and installation related to Metal Works in the construction industry which is a continuation of the family business in India, that has been in place for three generations.

Multi - Tech Engineering Industries L.L.C. main office and factory are located in Sharjah, U.A.E. However MTEI works and supplies are spread not only in UAE but also to Qatar, Oman, Lebanon, Yemen and Egypt.

The work figure of Multi - Tech Engineering Industries L.L.C. has grown substantially in the last 3 years, with the yearly turnover exceeding up to AED 50 Million.

1.2: Range of Services

Multi - Tech Engineering Industries L.L.C. offers complete solutions for all products related to the metal industry, with the company services starting from conceptual design to detailed design, fabrication, erection and maintenance.

The company's material range includes Wrought iron, Stainless Steel, Structural Steel and on-Ferrous casting. It is also a leading manufacturer of non-Ferrous architectural, ornamental and industrial castings.

Multi - Tech Engineering Industries L.L.C. range of products covers:

- Special decorative features
- Balustrades, handrails and Railings
- Structural Steel
- Fencing
- Pergolas
- Garden Furniture
- Lamp post
- Masharabiya
- Car Park shades (PTFE and PVDF)
- Acoustic Aluminum Ceilings
- Perforated Aluminum Cladding
- Perforated cast Aluminum Cladding
- Corian screens
- Metal screens
- Corian and metal Skirtings
- Grills and Gratings
- Architectural doors and gates
- Overhead Garage doors
- Bollards
- Canopies
- Miscellaneous steel fabrications
- All types of Aluminum Castings
- All types of Zinc Castings
- All types of Brass / Bronze Castings
- Architectural ornamentation

Multi-Tech Engineering Industries L.L.C. has the technical know-how, hands-on experience, latest equipment and competent manpower to design and fabricate any / all metal based structures or elements regardless of how complicated, or sophisticated these structures or elements are, as reflected in the many challenging projects executed by MTEI to date.

1.3: Company Strategies

- Multi - Tech Engineering Industries L.L.C. is determined and dedicated to achieve and maintain total customer satisfaction at all times, by fully satisfying and accommodating each customer's needs in a timely manner, while supplying the highest quality for all products, along with maintaining high levels of ethical standards
- Multi - Tech Engineering Industries L.L.C. is fully committed towards achieving excellence in its Designs, Manufacturing and Installation processes for all of its products and works by:
 - Ensuring that its products and works are specifically designed in accordance with each Customer's needs and requirements, delivered and installed properly in line with the agreed schedule, all at the most competitive price.
 - Ensuring that all Health, Safety and Environment standards and requirements are fully adhered to by MTEI
 - Ensuring that all Quality Control and Quality Assurance procedures are fully complied to by MTEI
 - Ensuring that all laws, rules and regulations are followed during fabrication in the factory and at the place of execution
 - Ensuring that any / all customer's new requirements arising during the execution of the works are attended to by MTEI and accommodated within MTEI works.
- Developing all MTEI staff and labours' technical skills and capabilities by conducting periodic training on job and outside job.
- Continuously upgrading the factory, with regard to the equipment and technologies in use, production capacity and storage areas, to cope with the work load being assumed and executed by MTEI.
- Continuously seeking the development of the business of Multi - Tech Engineering Industries L.L.C. to cover more products and more countries, while strategically planning the steps to be adopted by MTEI at each stage and in each area to ensure preserving the customers' satisfaction.

1.4: Operation Mode

Multi - Tech Engineering Industries L.L.C. has put a flexible set-up that enables the company to execute any project related to the Metal Industry in any country, on a "supply" or "supply and installation" basis. The functionality and effectiveness of this set-up has proven adequate in many projects executed by MTEI in different regions of the world. MTEI ensures the continuous enhancement of the subject set-up to optimize on the mode of operation of MTEI inside and outside UAE.

The key elements in this set-up are:

- ✓ Maintaining at the UAE factory, a sizable competent Engineering department, that can address any / all requirements of the projects, while one engineer is assigned to be the focal point for any project
- ✓ Having in place for each project a coherent team composed of personnel from the engineering, production, quality control and site divisions, which will attend to the site of any project, to take site measurement and meet with the client's representatives from different departments, to discuss technical and commercial subjects, and clarify / resolve any arising issues

- ✓ In addition to MTEI large engineering team, MTEI has frame agreements with specialized engineering companies that work along with MTEI engineering department as and when needed.
- ✓ MTEI sizable Logistic department handles all supplies from MTEI factory to different projects inside and outside the UAE, until the material is properly delivered to site.
- ✓ MTEI assigns for every project a Project Manager that manages the installation works at the project, when the same is within MTEI scope.
 - For projects inside UAE, MTEI carries out the installation works by using its own resources.
 - For projects outside UAE, MTEI deploys to every site its project manager, engineers, supervisory staff and core technical installers, while any further needed manpower is sourced from the local market as needed, with frame agreements set in between MTEI and manpower supply companies, as well as with installation companies in the different countries where MTEI execute projects on supply / installation basis
- ✓ MTEI management attends in a timely and regular manner to any meeting as and when requested by the Customer, such as negotiation meetings, progress meetings and others, while MTEI is equipped with all facilities to conduct audio or video conferences, as and when needed by any of its customers for projects inside or outside UAE.

2.1: Executed / Current Projects

A wide variety of projects were completed or currently being executed by Multi - Tech Engineering Industries L.L.C. since 2007 mainly in U.A.E., Qatar and other countries, with a list of the main projects included below

PROJECT TITLE:	DUBAI CREEK RESIDENCES
SCOPE DESCRIPTION:	Cast Aluminium Screens – Mashrabiya
LOCATION:	Dubai, United Arab Emirates
CLIENT:	Dubai Holding / Emaar Properties / THE LAGOONS PHASE ONE L.L.C
ARCHITECT / ENGINEER:	ATK Engineering Consultants
CONSULTANT:	WS Atkins & Partners Overseas
CONTRACTOR:	Technical Glass & Aluminium Company L.L.C.
PROJECT VALUE / YEAR:	AED 1,150,382 / 2018
PROJECT TITLE:	HAMENI TOWER, G+4P+27 RESIDENTIAL BUILDING
SCOPE DESCRIPTION:	Aluminium Mashrabiya
LOCATION:	Jumeirah Village Circle, Dubai, United Arab Emirates
CLIENT:	NAZROD LIMITED / Howarth MAK business consulting
DESIGN ARCHITECTS:	P&T Architects and Engineers Ltd. / Rachcoff Vella Architecture PTY LTD / Topo Design Studio
THE ENGINEER:	ECG (ENGINEERING CONSULTANTS GROUP)
MAIN CONTRACTOR:	China State Construction Engrg. Corp (Middle East) (L.L.C)
LANDSCAPE CONTRACTOR:	Marmara International Landscaping LLC
PROJECT VALUE / YEAR:	AED 320,000 / 2018
PROJECT TITLE:	CULTURE VILLAGE - LANDSCAPE PROJECT
SCOPE DESCRIPTION:	Decorative aluminum covers for feeder boxes
LOCATION:	Culture Village, Dubai, United Arab Emirates
CLIENT:	Dubai Properties Group
LEAD CONSULTANTS:	Cracknell
CONSULTANT:	Mace
MAIN CONTRACTOR:	Multitech Engineering Industries L.L.C
PROJECT VALUE / YEAR:	AED 392,635 / 2017
PROJECT TITLE:	SHUKRI SALEH AL BRAIK VILLA (PRIVATE VILLA)
SCOPE DESCRIPTION:	Double Leaf Sliding Door With Mashrabiya Screen
LOCATION:	Umm Suqeim Second, Dubai, United Arab Emirates
CLIENT:	Misriya Mohd Sadiq
CONSULTANT:	e-Home Eng. Consultancy
ARCHITECT:	LW Multi-Disciplined Designers
MAIN CONTRACTOR:	Bowyer Wick Building Contracting
PROJECT VALUE / YEAR:	AED 170,153 / 2017
PROJECT TITLE:	MARSA ALSEEF
SCOPE DESCRIPTION:	Aluminium Mashrabiya
LOCATION:	Al Hamriya - Bur Dubai, Dubai (Creek), United Arab Emirates
CLIENT:	Meraas Development
PROJECT MANAGER:	Mace
ARCHITECT/ENGINEER:	ATK Engineering Consultants
CONSULTANT:	WS Atkins & Partners Overseas
DESIGN ARCHITECT:	IO DESIGN, United Kingdom
MAIN CONTRACTOR:	Dutco Balfour Beatty LLC
PROJECT VALUE / YEAR:	AED 286,926 / 2017

PROJECT TITLE: BAHWAN TOWER

SCOPE DESCRIPTION:	Podium Level Mashrabiya
LOCATION:	Burj Khalifa District, Dubai, United Arab Emirates
CLIENT:	Utmost Properties, Suhail Bahwan Group
CONSULTANT	Arif & Bintook Consulting Architects & Engineers
MAIN CONTRACTOR:	ANC Contracting, LLC
PROJECT VALUE / YEAR:	AED 868,200 / 2017

PROJECT TITLE: LUSAIL PRIMARY INFRASTRUCTURE – CP10-B1 PROJECT

SCOPE DESCRIPTION:	Waterfront Promenade Pergolas
LOCATION:	Lusail, Qatar
CLIENT:	Lusail Real Estate Development Company
PROJECT MANAGER:	Parson International LTD
CONSULTANT:	Dorsch Qatar LLC
MAIN CONTRACTOR:	AlNakheel Agriculture & Trading WLL
PROJECT VALUE / YEAR:	QR 16,060,060 / 2017

PROJECT TITLE: MOVENPICK HOTELS AND RESORTS

SCOPE DESCRIPTION:	Stainless Steel Staircases And Balustrades
LOCATION:	Colombo, Sri Lanka
CLIENT:	Softlogic Holdings
CONSULTANT:	DiLeonardo
MAIN CONTRACTOR:	Services & Trade Company, Sultanate Of Oman
PROJECT VALUE / YEAR:	AED 751,934 / 2017

PROJECT TITLE: SOUQ EXTRA MALL - DSO

SCOPE DESCRIPTION:	Perforated Aluminium Ceiling
LOCATION:	Dubai, United Arab Emirates
CLIENT:	Souq Extra LLC
DESIGN CONSULTANT :	John R. Harris & Partners
CONTRACTOR:	Highgate Interiors Design
PROJECT VALUE / YEAR:	AED 329,194 / 2016

PROJECT TITLE: AL RAWDHA PALACE, AL AIN

SCOPE DESCRIPTION:	Cast Aluminium Flag Pole
LOCATION:	Al Ain, United Arab Emirates
CLIENT:	Ministry of Presidential Affairs (MOPA)
CONSULTANT :	Icon Consultant Engineers
CONTRACTOR:	Al Mahal Cont. & Gen. Transport Co.
PROJECT VALUE / YEAR:	AED 562,158 / 2016

PROJECT TITLE: ELITE @ SPORTS RESIDENCE

SCOPE DESCRIPTION:	Podium level aluminum mashrabiya
LOCATION:	Al Hebiah, Dubai, United Arab Emirates
CLIENT:	TRIPLANET INTERNATIONAL FZC.
CONSULTANT :	Barajeel Engineering Consultants
CONTRACTOR:	Global Contracting L.L.C
PROJECT VALUE / YEAR:	AED 1,509,546 / 2016

PROJECT TITLE: RESIDENTIAL DEVELOPMENT ON PLOT NO:3945968 AT EMIRATES HILL THIRD, DUBAI

SCOPE DESCRIPTION:	Cast Aluminium Flag Pole
LOCATION:	Dubai, United Arab Emirates
CONTRACTOR:	Great Look Aluminium & Glass Cont. L.L.C
PROJECT VALUE / YEAR:	AED 79,104 / 2016

PROJECT TITLE:	THE RIBBON
-----------------------	-------------------

SCOPE DESCRIPTION:	Boundary Wall Steel Fence
LOCATION:	Motor City, Dubai, United Arab Emirates
CLIENT:	Union properties
CONSULTANT:	Engineering Consultants Group (ECG)
CONTRACTOR:	Alumetal LLC
PROJECT VALUE / YEAR:	AED 129,608 / 2016

PROJECT TITLE:	PALAZZO VERSACE
-----------------------	------------------------

SCOPE DESCRIPTION:	Aluminium Staircase Handrail with Decorative Posts and Balustrades
LOCATION:	Culture Village, Dubai, United Arab Emirates
CLIENT:	Enshaa Services Group
ARCHITECT:	Holford Associates
CONSULTANT:	National Engineering Bureau (NEB)
MAIN CONTRACTOR:	Arabtec Enshaa Services Group Joint Venture
PROJECT VALUE / YEAR:	AED 124,080 / 2015

PROJECT TITLE:	CLUB VISTA
-----------------------	-------------------

SCOPE DESCRIPTION:	Aluminium Pergola
LOCATION:	Palm Jumeirah, Dubai, United Arab Emirates
CLIENT:	Palm Jumeirah
CONSULTANT:	Dar Al Handasah (Shair & Partners)
MAIN CONTRACTOR:	Al Ghurair Contracting & Engineering Works L.L.C
PROJECT VALUE / YEAR:	AED 73,710 / 2015

PROJECT TITLE:	AL AIN STADIUM & MIXED-USE DEVELOPMENT - PHASE 2.1
-----------------------	---------------------------------------------------------------

SCOPE DESCRIPTION:	Aluminium Trellis
LOCATION:	Al Ain, United Arab Emirates
CLIENT:	Aafaq Holdings LLC
PROJECT MANAGERS:	Ec Harris Built Asset Consultancy
MAIN CONTRACTOR:	BAM International
ARCHITECT:	Broadway Malyan
CONTRACTOR:	Alumetal LLC
PROJECT VALUE / YEAR:	AED 581,400 / 2015

PROJECT TITLE:	EMIRATES ALUMINIUM SMELTER COMPLEX PHASE - 2
-----------------------	-----------------------------------------------------

SCOPE DESCRIPTION:	Decorative Aluminum Features
LOCATION:	Abu Dhabi, United Arab Emirates
CLIENT:	Emirates Aluminium Company Limited (emal)
MAIN CONTRACTOR:	AMANA
PROJECT VALUE / YEAR:	AED 1,067,663 / 2015

PROJECT TITLE:	AL HABTOOR CITY (ST. REGIS HOTEL WINTER GARDEN)
-----------------------	---------------------------------------------------------

SCOPE DESCRIPTION:	Decorative Aluminum Doors
LOCATION:	Dubai, United Arab Emirates
CLIENT:	Dubai National Investment Co. L.L.C
CONSULTANT:	Khatib & Alami
MAIN CONTRACTOR:	Habtoor Leighton Group (HLG)
PROJECT VALUE / YEAR:	AED 577,372 / 2015

PROJECT TITLE:	PROPOSED G+1 (1 1) GROUP OF VILLA & SERVICE BLOCK
-----------------------	---------------------------------------------------------------

SCOPE DESCRIPTION:	Architectural Roof Top Pergolas, Car Park & Balcony Pergolas (In Steel & Aluminum)
LOCATION:	Dubai, United Arab Emirates
CLIENT:	THE KANOO GROUP
CONSULTANT:	X-Architects
MAIN CONTRACTOR:	Al Ghurair Contracting & Engineering Works L.L.C
PROJECT VALUE / YEAR:	AED 1,074,673 / 2015

PROJECT TITLE: PRESIDENTIAL PALACE ABU DHABI

SCOPE DESCRIPTION:	Architectural Car Park Shades with PVC Fabric, Aluminum Handrails & Balustrades Decorative Pergolas, Decorative Aluminum Pavilions
LOCATION:	Abu Dhabi, United Arab Emirates
CLIENT:	The Executive Committee For The Presidential Palace Project
PROJECT MANAGER:	RW Armstrong
CONSULTANT:	ICON - Intelligent Consult - Consultant Engineers LLC
MAIN CONTRACTOR:	Consolidated Contracting Engineering & Procurement S.A.L. - Offshore
PROJECT VALUE / YEAR:	AED 13,535,112 / 2014-15

PROJECT TITLE: DEVELOPMENT OF SALALAH AIRPORT

SCOPE DESCRIPTION:	Decorative Aluminum Mashrabiya, Stainless Steel Binnacles
LOCATION:	Salalah, Sultanate of Oman
CLIENT:	Oman Sultanate, Ministry Of Transport And Communications
PROJECT MANAGER:	ADPI
CONSULTANT:	Hill International
MAIN CONTRACTOR:	Larsen & Toubro (L&T)
PROJECT VALUE / YEAR:	OMR 850,828 / 2014

PROJECT TITLE: PROPOSED EXTENSION OF TERMINAL BUILDING YEMEN

SCOPE DESCRIPTION:	Sun Protection Shade
LOCATION:	Yemen
CLIENT:	Mukalla International Airport Engineering
CONSULTANT:	Consulting Engineering Services (India) Pvt. Ltd
PROJECT VALUE / YEAR:	AED 500,000 / 2014

PROJECT TITLE: QATAR FOUNDATION OF ISLAMIC STUDIES

SCOPE DESCRIPTION:	Decorative Corian Screen For Mosque, Architectural Steel Canopy Galvanized Steel Gratings For Car Park, Steel Access Stairs & Ladders
LOCATION:	Qatar
CLIENT:	Qatar Foundation
PROJECT MANAGER:	ASTAD Project Management
MAIN CONTRACTOR:	Joint Venture, Consolidated Contractors Group S.A.L., Teyseer Contracting Company W.L.L
PROJECT VALUE / YEAR:	QAR 3,134,141 / 2014

PROJECT TITLE: PALAZZO VERSACE

SCOPE DESCRIPTION:	Decorative Condominium Handrails & Balustrades In Cast Aluminum, Aluminum Decorative Landscaping Handrails & Balusters
LOCATION:	Dubai, United Arab Emirates
CLIENT:	Enshaa Services Group
CONSULTANT:	National Engineering Bureau (NEB)
MAIN CONTRACTOR:	Arabtec/Enshaa Services Group Joint Venture
PROJECT VALUE / YEAR:	AED 2,000,000 / 2014

PROJECT TITLE: LUSAIL MULTI-PURPOSE HALL

SCOPE DESCRIPTION:	Aluminum Composite Acoustic Panels With Rock Wool For Dome Lining, Architectural Car Park Shades with PVDF Fabric, Podium Shades with PTFE Fabric, Handrails And Balustrades In Stainless Steel, Glass & Galvanized Iron, Steel Access Stairs, Spiral Stairs & Ladders
LOCATION:	Qatar
CLIENT:	Qatar Olympic Committee
PROJECT MANAGER:	ASTAD
CONSULTANT:	Dar Al Handasah Shair and Partners
MAIN CONTRACTOR:	CCC/TCC joint venture
PROJECT VALUE / YEAR:	QR 32,895,598 / 2013-2014

PROJECT TITLE:	AL RAFA DUBAI G+6 BUILDINGS
SCOPE DESCRIPTION:	Cast Aluminum Balcony, Staircase Handrails, Cast Aluminum Gates & Boundary Fences
LOCATION:	Dubai, United Arab Emirates
CLIENT:	The First Investor LLC
CONSULTANT:	Mashhoor Engineering Consultants
CONTRACTOR:	Modern Building Contractors
PROJECT VALUE / YEAR:	AED 950,000/ 2013

PROJECT TITLE:	NASTARAN TOWERS
SCOPE DESCRIPTION:	Cast Aluminum Balcony, Staircase Handrails, Decorative Aluminum Mashrabiya
LOCATION:	Cultural Village, Dubai, United Arab Emirates
CLIENT:	RAAM Limited
PROJECT MANAGER	Consolidated Project Management (CPM)
ASSOCIATES:	Dubai Properties Group
CONSULTANT:	Arenco Architectural & Engineering Consultants
CONTRACTOR:	Belhasa Engineering & Contracting Company L.L.C.
PROJECT VALUE / YEAR:	AED 1,500,000 / 2013

PROJECT TITLE:	M1 BUILDING
SCOPE DESCRIPTION:	Structural Steel Bridges For Interconnecting Buildings
LOCATION:	Beirut, Lebanon
CLIENT:	M1 Real Estate
CONSULTANT:	EcoConsulting, London, UK
MAIN CONTRACTOR:	ACC (Arabian Construction Company)
PROJECT VALUE / YEAR:	AED 500,222/ 2013

PROJECT TITLE:	PRIVATE VILLA IN AL SAFOUH FIRST, FOR HH SHEIK MOH'D BIN KHALIFA
SCOPE DESCRIPTION:	Decorative Aluminum Gate, Aluminum Pergola
LOCATION:	Dubai, United Arab Emirates
CLIENT:	HH Sheik Moh'd Bin Khalifa
MAIN CONTRACTOR:	Commodore Contracting
PROJECT VALUE / YEAR:	AED 600,500 / 2013

PROJECT TITLE:	THE INTERNATIONAL SCHOOL OF CHOUEIFAT
SCOPE DESCRIPTION:	Aluminum Fence and Gate
LOCATION:	Dubai Investments Park, Dubai, United Arab Emirates
CLIENT:	International School of Choueifat
CONSULTANT:	Arab & Turk International
MAIN CONTRACTOR:	Darwish Engineering
PROJECT VALUE / YEAR:	AED 1,000,000 / 2013

PROJECT TITLE:	ELITE TOWERS FOR SPORTS RESIDENCE
SCOPE DESCRIPTION:	Aluminum Parking Screens
LOCATION:	Sports City, Dubai, United Arab Emirates
CLIENT:	Triplanet International F.Z.C
CONSULTANT:	Barajeel Engineering Consultants
MAIN CONTRACTOR:	Global Contracting L.L.C
PROJECT VALUE / YEAR:	AED 2,000,000 / 2013

PROJECT TITLE:	DINING OUTLET OF BAPAS BAR
SCOPE DESCRIPTION:	Decorative Metal Wine Shelves In Aluminum, Decorative Aluminum Doors Steel Furniture (Interior)
LOCATION:	Dubai, United Arab Emirates
CLIENT:	Bapas Bar
CONSULTANT:	LWD Interiors
MAIN CONTRACTOR:	X Works
PROJECT VALUE / YEAR:	AED 600,000 / 2013

PROJECT TITLE:	GARGASH AL KHAWANEEJ- GUEST VILLA & SERVICE BUILDING
SCOPE DESCRIPTION:	Aluminum Mashrabiyas
LOCATION:	Dubai, United Arab Emirates
CLIENT:	Dr. Anwar Gargash-Mohammad Abdulkhalaq Haji
CONTRACTOR:	AMBB
PROJECT VALUE / YEAR:	AED 500,000/ 2013
PROJECT TITLE:	CHINESE EMBASSY @ AL KHUWAIIR
SCOPE DESCRIPTION:	Main Gates In Steel
LOCATION:	Al Khuwair, Oman
CLIENT:	Chinese Embassy
MAIN CONTRACTOR:	China Tiesiju Civil Engineering Group Co.,LTD
PROJECT VALUE / YEAR:	OMR 80,000 / 2013
PROJECT TITLE:	SHARJAH CULTURAL AND CHESS CLUB
SCOPE DESCRIPTION:	Aluminum Boundary Wall Fence
LOCATION:	Sharjah, United Arab Emirates
CLIENT:	Government of Sharjah, Directorate of Public Works
CONSULTANT:	Rashid Al Owais Engineering Consultants, ORYX Engineering Consultants
MAIN CONTRACTOR:	Al Wathba Building Contracting Co. (L.L.C)
PROJECT VALUE / YEAR:	AED 785,000 / 2012
PROJECT TITLE:	FALCON CITY OF WONDERS
SCOPE DESCRIPTION:	Cast Aluminum Staircase Handrails
LOCATION:	Dubailand, Dubai, United Arab Emirates
CLIENT:	Falcon City Of Wonders LLC
CONSULTANT:	Arab Experts Engineering Consultants - AREX
MAIN CONTRACTOR:	Pioneer Contracting
PROJECT VALUE / YEAR:	AED 650,000 / 2012
PROJECT TITLE:	INVESTIGATION & DRUGS BUILDING ,AL AIN
SCOPE DESCRIPTION:	Steel Grill doors cage works
LOCATION:	Al Aini, United Arab Emirates
CLIENT:	Abudhabi Police GHQ
MAIN CONTRACTOR:	Reem Dubai Contracting
PROJECT VALUE / YEAR:	AED 725,000/ 2012
PROJECT TITLE:	SOFITEL -CAPITAL PLAZA HOTEL
SCOPE DESCRIPTION:	Wood Finish Aluminum Pergola
LOCATION:	Abu Dhabi , United Arab Emirates
CLIENT:	REISCO
MAIN CONTRACTOR:	Arabian Construction Company
PROJECT VALUE / YEAR:	AED 683,000/ 2011
PROJECT TITLE:	AL KHAN B+G+M+5P+44+HELIPAD
SCOPE DESCRIPTION:	Aluminum Mashrabiyas
LOCATION:	Sharjah, United Arab Emirates
CLIENT:	Al Batha Real Estate Company
CONSULTANT:	Al-Abir Consultant and Engineering
MAIN CONTRACTOR:	Sun Engineering &Contacting Co.(L.L.C)
PROJECT VALUE / YEAR:	AED 1,000,000 / 2011
PROJECT TITLE:	NEW DOHA INTERNATIONAL AIRPORT (NDIA)
SCOPE DESCRIPTION:	Tower Cladding in Cast Aluminum, Stainless Steel Handrails
LOCATION:	Doha, Qatar
CLIENT:	Government Of Qatar Air Traffic Control Facilities
CONSULTANT:	Overseas Bechtel, INC
MAIN CONTRACTOR:	Consolidated Contractors International Company S.A.L
PROJECT VALUE / YEAR:	QR 13,000,000 / 2011

PROJECT TITLE: BUSINESS BAY IRRIGATION PROJECTS

SCOPE DESCRIPTION: Steel Staircases & Handrails Service Tunnels
 LOCATION: Business Bay, Dubai, United Arab Emirates
 CLIENT: Dubai Properties
 CONSULTANT: Halcrow
 MAIN CONTRACTOR: Al Naboodah Engg
 PROJECT VALUE / YEAR: AED 2,700,000 / 2010

PROJECT TITLE: JW MARRIOTT ABU DHABI RESORT HOTEL AND SPA

SCOPE DESCRIPTION: Steel Staircases & Handrails Service Tunnels
 LOCATION: Abu Dhabi, United Arab Emirates
 CLIENT: Abu Dhabi National Hotels
 PROJECT MANAGER: Mace International Ltd
 CONSULTANT: Mace International Ltd
 MAIN CONTRACTOR: Otak International
 PROJECT VALUE / YEAR: AED 2,100,000 / 2010

PROJECT TITLE: REGAL TOWER

SCOPE DESCRIPTION: Aluminum Mashrabiya
 LOCATION: Dubai, United Arab Emirates
 CLIENT: Tameer Holding Investment
 MAIN CONTRACTOR: Al Araab & Al Masharif Contracting L.L.C
 PROJECT VALUE / YEAR: AED 500,000 / 2010

PROJECT TITLE: VIP BRIDGE NAD AL SHEBA RACE COURSE

SCOPE DESCRIPTION: Steel Guardrails, Aluminum Handrails
 LOCATION: Dubai, United Arab Emirates
 CLIENT: Roads and Transport Authority (RTA)
 CONSULTANT: Africon
 MAIN CONTRACTOR: Dutco Balfour Beatty LLC
 PROJECT VALUE / YEAR: AED 4,800,000 / 2009

PROJECT TITLE: MOSQUE OFFICE BUILDING

SCOPE DESCRIPTION: Steel Stair, Cast Aluminum Fence, Stainless Steel Handrails, Canopy
 LOCATION: Dubai, United Arab Emirates
 CLIENT: Awaqafou Islamic Affairs
 MAIN CONTRACTOR: Dutco Balfour Beatty LLC
 PROJECT VALUE / YEAR: AED 525,000 / 2009

PROJECT TITLE: DUBAI SPORTS CITY ACADEMY

SCOPE DESCRIPTION: Steel Guardrails, Aluminum Handrails
 LOCATION: Dubai, United Arab Emirates
 CLIENT: Dubai Sports City
 CONSULTANT: Godwin Austen Johnson (GAJ)
 MAIN CONTRACTOR: Transemirates Contracting L.L.C
 PROJECT VALUE / YEAR: AED 900,000 / 2009

PROJECT TITLE: ABUHAIL 200 VILLAS

SCOPE DESCRIPTION: Cast Aluminum Stair Handrails, Gates, Cast Aluminum Boundary Wall Fence
 LOCATION: Dubai, United Arab Emirates
 CLIENT: Dubai Government
 MAIN CONTRACTOR: United Engineering Construction LLC
 PROJECT VALUE / YEAR: AED 1,488,000 / 2008

PROJECT TITLE: DREC VILLAS

SCOPE DESCRIPTION: Cast Aluminum Stair Handrails, Gates, Cast Aluminum Boundary Wall Fence
 LOCATION: Dubai, United Arab Emirates
 CLIENT: Dubai Government
 MAIN CONTRACTOR: Al Hudaiba Contracting
 PROJECT VALUE / YEAR: AED 1,250,000 / 2008

PROJECT TITLE:	DISCOVERY GARDENS
SCOPE DESCRIPTION:	Steel Staircases & Handrails Service Tunnels
LOCATION:	Dubai, United Arab Emirates
CLIENT:	Nakheel
PROJECT MANAGER:	Turner Construction International LLC
CONSULTANT:	Wilbur Smith Associates, INC
MAIN CONTRACTOR:	Al Naboodah Engineering (LLC)
PROJECT VALUE / YEAR:	AED 2,400,000/ 2008
PROJECT TITLE:	INTERNATIONAL CITY
SCOPE DESCRIPTION:	Cast Aluminum Balustrades
LOCATION:	Dubai, United Arab Emirates
MAIN CONTRACTOR:	Gammon & Billimoria
PROJECT VALUE / YEAR:	AED 1,000,000 / 2008
PROJECT TITLE:	ZAYED UNIVERSITY
SCOPE DESCRIPTION:	Perforated Aluminum Wall Cladding Panels Based On Halftone Imaging Technique
LOCATION:	Abu Dhabi, United Arab Emirates
CLIENT:	Mubadala Development Company
PROJECT MANAGER:	Parsons
CONSULTANT:	Obermeyer Engineering Consulting
MAIN CONTRACTOR:	Al Habtoor - Murray & Roberts JV
PROJECT VALUE / YEAR:	AED 2,000,000/ 2007

2.2 Main Clients

Multi - Tech Engineering Industries L.L.C. clients include governmental companies, semi-governmental companies, and the private sector, while MTEI projects involved most of the main Designers, Consultants and Project Management companies in U.A.E and Qatar, with a non-exhaustive list of the same as follows:

2.2.1 Clients

- H.H. Mohammed Bin Khalifa Bin Zayed Al Nahyan (UAE)
- Dubai Government (UAE)
- Dubai World Center - DWC (UAE)
- Sharjah Municipality (UAE)
- Abu Dhabi Police GHQ (UAE)
- Dubai Properties (UAE)
- Qatar Foundation (Qatar)
- Qatar Olympic Committee (Qatar)
- Government of Qatar Air Traffic Control Facilities (Qatar)
- Nakheel (UAE)
- Mubadala Development Company P.J.S.C. (UAE)
- Abu Dhabi National Hotels (UAE)
- Tameer Holding Investment (UAE)
- Road and Transport Authority - RTA (UAE)
- Awqafou Islamic Affairs (UAE)
- REISCO Abu Dhabi (UAE)
- Al Batha Real Estate Company (UAE)
- Alu Metal LLC (UAE)
- Falcon City of Wonders (UAE)
- The First Investor L.L.C. (UAE)
- RAAM Limited (UAE)
- Kanoo Group L.L.C. (UAE)
- International School of Choueifat (UAE)
- Triplanet International F.Z.C (UAE)
- H Hotel Podium Level Capital Towers (UAE)
- Dr. Anwar Gargash Mohammad Abdulkhalaq Haji (UAE)
- Chinese Embassy (Oman)
- International Capital Trading (UAE)
- Mika Real Estate S.A.R.L. (Lebanon)
- The Executive Committee for the Presidential Palace Project (U.A.E.)
- Ministry of Transport and Communication (Oman Sultanate)
- Mukalala International Airport Engineering (Yemen)
- Enshaa Services Group (UAE)

2.2.2 Consultants

Below is a list of the Consultants Companies with whom MTEI executed projects over its years of operation:

- Dar Al Handasah
- KEO International Consultants
- Khatib and Alami
- Hill International
- Halcrow
- Overseas Bechtel INC
- Obermeyer
- X-Architects
- I.CON
- Consulting Engineering Services

- National Engineering Bureau
- Mashhor Engineering Consultants
- Arenco Architectural and Engineering Consultants
- Gjo Geitani Architects
- WZMH Architects
- ACG Architects Architectural Consulting Group
- Arab and Turk International
- Barajeel Engineering Consultants
- LWD Interiors
- LWD Architects
- Rashid Al Owais Engineering Consultant
- Arab Experts Engineering Consultants
- Dar Al Khaleej Engineering Consultant
- Wa International Passionate About Design
- Al Abir Consulting and Engineering
- OTAK International
- Wilbur Smith Associated

2.2.3 Project Management Companies

Below is a list of the Consultants Companies with whom MTEI executed projects over its years of operation:

- HILL
- Parsons
- ASTAD
- Mace International
- Dorsch Gruppe
- DG Jones and Partners
- ADPI
- RW Armstrong
- Lead Architect

2.3 MTEI Approvals

Multi - Tech Engineering Industries L.L.C. as a company is approved by a wide range of Clients, Consultants and Project Management companies, a list of which is included in section 2.2 above.

Multi - Tech Engineering Industries L.L.C. is well familiar with the procedures, requirements, set-ups, and modes of operations of the above wide variety of companies, with the same involving the different stages of work, from submission of design calculations, to preparation of drawings, to material submittals, to material inspection, to site inspections, approvals and close-outs.

The above given permits to Multi -Tech Engineering Industries the flexibility and ability to kick-off any project in a fast manner, while ensuring that all steps are carried out in line with the clients requirements.

Multi - Tech Engineering Industries L.L.C. is on the list of approved manufacturers / companies in many of the above listed clients.

3.1: Organization Chart / Manpower

Throughout the years, Multi - Tech Engineering Industries L.L.C. has established throughout the years a coherent and comprehensive organizational structure composed of managers, engineers of different disciplines and diversified experience, foremen, equipment operators, designers and draftsmen, skilled and unskilled manpower and others, with such structure adequate to assume different projects of different sizes in different countries, while MTEI organization is being complemented by local manpower, or specialized expertise as the need be on project basis.

Multi - Tech Engineering Industries L.L.C. is structured in a way where it can assume projects on supply or supply and installation basis in most of the countries, and mainly in the Gulf and Middle East regions.

Multi - Tech Engineering Industries L.L.C. organization chart is included as Attachment No 1 to Section 3.

3.2 Engineering Capabilities

MTEI has a complete in-house Engineering Department composed of design engineers and draftsmen that are competent to assume all engineering activities related to MTEI scope of service, with the subject personnel being experts in the Metal Works industry.

All design calculations, design drawings, shop drawings and fabrication drawings are produced by MTEI in-house.

In addition to the above, MTEI has set frame agreements with specialized engineering companies, the services of which are utilized depending on the complexity of the project and the load on MTEI in-house Engineering Department.

Two of these specialized engineering companies are listed below:

Company Name: SWISS MIDDLE EAST
Address: United Arab Emirates - Dubai - PO Box 33977 or
 Switzerland - SME Engineering GmbH - Muri AG - CH 5630

Website: www.mecweng.com

Field of Service: Swiss Middle East is a specialist design office in the Design, Engineering, Planning and Consulting of aluminum curtain wall and metal cladding.

Company Name: TECHNO SPECIALIST
Address: United Arab Emirates - Sharjah - PO Box 121908

Website: www.technospecialist.net

Field of Service: Techno Specialist is specialized in structural design including Architectural stainless steel solutions, lightweight structures, structural steel, stainless steel, cables, tensile membranes (HDPE, PVC and PTFE), etc...

With the above set-up, MTEI can assume all engineering services for any project in the Metal industry.

3.3: Factory Layout and Production Capacity

Multi - Tech Engineering Industries L.L.C. factory in Sharjah, U.A.E., is spread over an area of around 100,000 sq ft divided between covered and non-covered areas being used for fabrication and storage.

A "Layout of the Factory" comprising the fabrication areas, storage areas and offices is included as Attachment No 3 to Section 3.

Further storage and fabrication areas can be utilized by MTEI, based on set agreements with the owners of the adjacent land as the need be.

With the current set-up, Multi - Tech Engineering Industries L.L.C. was able to fabricate the below in one year:

- 20 km of stainless steel / mild steel handrails
- 5,000 tons of structural steel
- 250 tons of Cat Aluminum
- 200,000 sqm of CNC routing, CNC water jet and CNC punching
- 75,000 sqm of tensile fabric
- 2,000 tons of miscellaneous steel
- 15 tons of anodizing

The above production was based on a 10 hours production shift for most of the days of the year, the same being increased to double shift depending on the load on MTEI and the projects schedules.

3.4: List of Equipment

Multi - Tech Engineering Industries L.L.C. factory is outfitted with the latest equipment being used in the fabrication of different metal structures and elements, while MTEI management ensures at all times that the factory equipment are upgraded to the latest available technology, to achieve the final aim of producing the highest quality product at the optimum duration.

SL No.	DESCRIPTION	QUANTITY
1	WELDING MACHINES	
	a) MIG WELDING MACHINES	22
	b) TIG WELDING MACHINES	10
	c) ARC WELDING MACHINES	40
2	CUTTING MACHINES AND DRILLING MACHINES	
	a) HEAVY DUTY CUT OF SAW	3
	b) METAL BAND SAW MACHINE	2
	c) HEAVY DUTY CHOP SAW	5
	d) PLASMA CUTTING MACHINE	15
	e) CIRCULAR SAW	10
	f) NOTCH CUTTING MACHINE FOR PIPE	1
	g) NOTCH CUTTING MACHINE FOR SHEET	1

SL No.	DESCRIPTION	QUANTITY
	h) DOUBLE HEAD DEGREE BORING MACHINE	1
	I) MAGNETIC DRILLING MACHINES	5
	j) RECHARGABLE SELF DRILLING MACHINES	82
	k) HILTI CORING DRILLING MACHINE	4
	l) SHEARING MACHINE	1
3	BENDING MACHINES	
	a) PRESS BREAK BENDING MACHINE	1
	b) SHEET BENDING MACHINE	1
	c) HEAVY DUTY ROLLING MACHINE	1
	d) MEDIUM DUTY ROLLING MACHINE	1
	e) PROFILE BENDING MACHINE	1
	f) HYDRAULIC PRESS 75TON CAPACITY	1
4	CASTING DIVISION MACHINES	
	a) DIE CASTING MACHINE SMALL	1
	b) DIE CASTING MACHINE BIG	1
	c) MELTING FURNACE WITH 150KG CAPCITY	1
	e) MELTING FURNACE WITH 300KG CAPCITY	1
	f) MULLER MACHINE	1
	g) ROBIN SAND COMPACTOR	2
5	ANODIZING MACHINE	1
6	SURFACE CONDITIONING MACHINES	1
	a) ANGLE GRINDING MACHINES 4"	90
	b) ANGLE GRINDING MACHINES 5"	30
	c) ANGLE GRINDING MACHINES 7"	20
	d) DIE GRINDING MACHINE	25
	e) SANDING MACHINES	25
7	STAINLESS STEEL FINISHING MACHINES	
	a) PROFESSIONAL STAINLESS STEEL POLISHING MACHINES	10
	b) STAINLESS STEEL BELT POLISHING MACHINES	10
	c) STAINLESS STEEL EASY SET FOR FINISHING	5
	c) STAINLESS STEEL SANDER MACHINES	5
8	CNC MACHINES	
	a) CNC ROUTER	3
	b) CNC WATER JET MACHINE	1
	c) PUNCHING MACHINE	1
9	AIR COMPRESSORS	2
10	OMI ED 480 DRYER	2
11	HILTI POWDER ACTUATED TOOL	2
12	LATHE MACHINE	3
13	PVC FABRIC WELDING MACHINE	2
14	PTFE FABRIC WELDING MACHINE	2

3.5: Affiliations with local companies

MTEI has made frame agreements with different reputable companies in UAE that are in the same line of business as MTEI.

The services of these companies are utilized by MTEI for the projects which are over and above MTEI in-house factory capacity, after obtaining the consent of the client.

Such companies include:

- Al Cornish Aluminium Cont. Ind.L.L.C ,Sharjah
- Cornish Aluminium Factory, Dubai
- Norwich Aluminium,Sharjah
- Season Paints LLC ,Dubai
- Shaharco Contracting,Sharjah

3.6: Strategic Agreement with Suppliers / installers

MTEI has built throughout the years strong business relations with the major suppliers of steel, Aluminum, glass, fabrics, painting and coatings.

Steady procedural and communication channels are set in between MTEI and the suppliers, making these suppliers the backbone of MTEI. Below is the list of the main suppliers with whom MTEI deals.

3.6.1) Material Suppliers

- Binmalik Trading
- Tee Dee Trading
- Alloy Steel
- Core Metal LLC
- Al Rama International
- Universal Tubes and Pipes LLC
- Great Steel and Metals
- Kin long
- Hilti
- Fischer
- Wurth
- Fruilsider
- Mungo
- Hidayath Trading LLC
- Fastner Point Industries LLC

3.6.2) Aluminum Suppliers

- Gulf Extrusion
- Arabian Extrusion
- White Aluminium

3.6.3) Glass Processors and Suppliers

- Gulf Glass LLC
- Future Glass LLC

3.6.4) Fabric Manufacturers and Suppliers

- Verseidag
- Ferrari
- Mehler
- Nacil

3.6.5) Associated Powder Coating and Painting Companies

- Alu Metal
- Intercare
- Everest Metal Coating
- Al Sakharah Metal Coating
- Al Sajja Metal Coating
- Pretech Metal Coating

3.6.6) Paint Manufacturers and Suppliers

- Jotun Paints
- Sigma Paints
- Al Gurg Paints LLC
- Hempel paints
- PPG
- National Paints
- International Paints

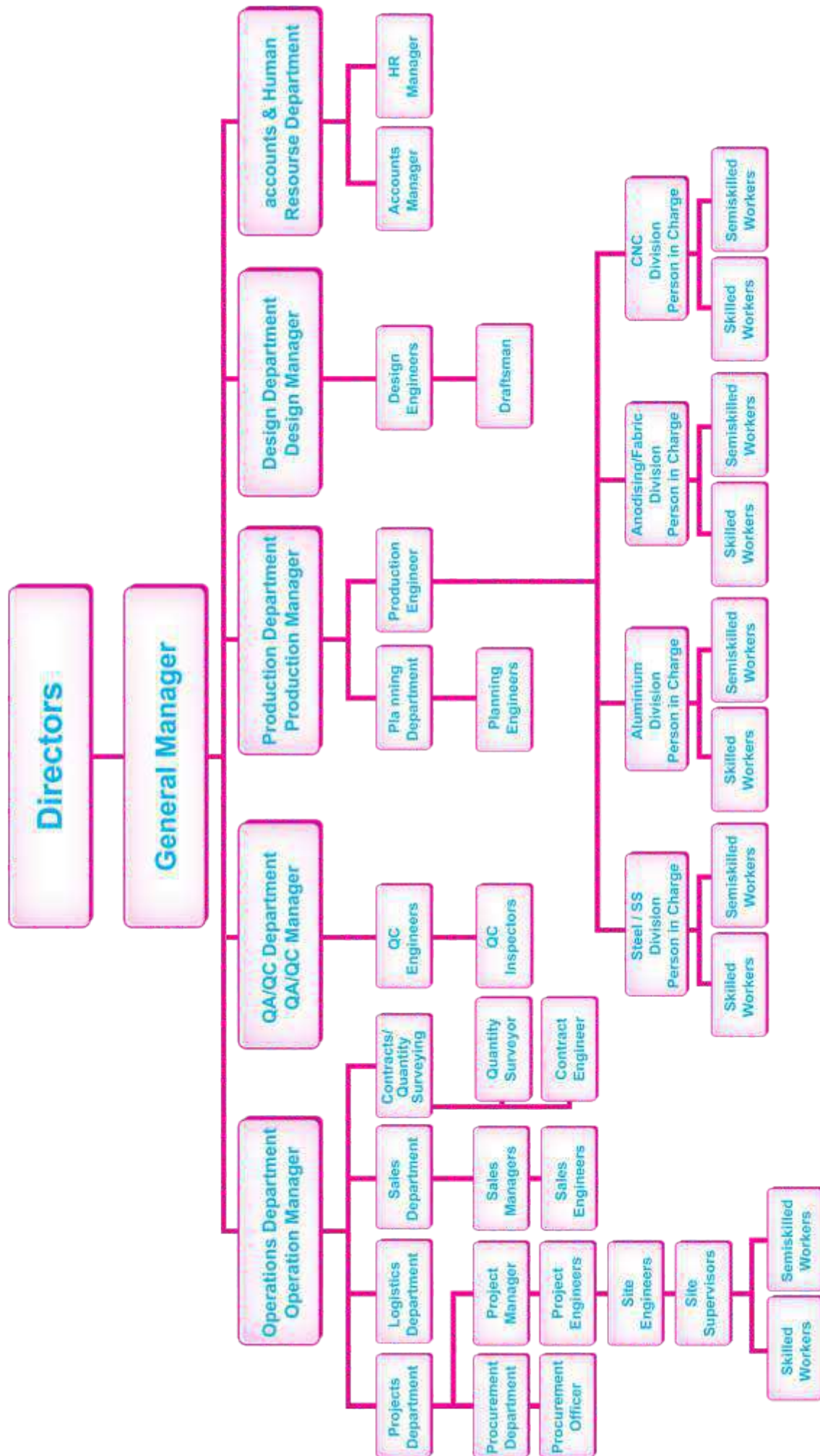
Further to the above, MTEI has established agreements with manpower supply companies and installation companies in different areas, especially in UAE, Qatar and Oman from which skilled manpower is withdrawn depending on the need and the relevant project schedule.

3.7: Abstract Statement

- MTEI has put in place a comprehensive set-up composed of the following:
- Complete organization
- Competent Engineering Department
- Large factory with sophisticated equipment
- Set agreements with fabrication companies
- Set frame agreements with suppliers and manpower supply companies

The above set-up allowed and allows MTEI to execute any work related to the Metal Industry in a smooth and competitive manner, while MTEI management is committed to continuously enhance its set-up to optimize on its operations and ensure the clients satisfaction at all stages and in every service given by MTEI.

ORGANIZATION CHART



Introduction

Multi-Tech Engineering Industries L.L.C. recognizes its liability to provide safe and healthy place of work at all times, whether during the manufacturing process at its factory or during the execution of the installation works at different sites.

Multi-Tech Engineering Industries L.L.C. continuously works towards promoting the highest standards of Health and Safety for its employees as well as for all the persons related and affected by the operations of Multi-Tech Engineering Industries L.L.C.

Potential hazards are always present in the manufacturing work of Multi-Tech Engineering Industries L.L.C. in the factory or during the installation works on site, with such hazards differing from one project to another, depending on the nature and working conditions in the project. To eliminate these hazards and avoid accidents, incidents and near misses, health, environment and safety procedures and precautions are put in place by Multi-Tech Engineering Industries L.L.C., whose management gives Safety, Health and Environment the highest priority at all times and in all projects.

The above is up to the level of being a Policy for MTEI as a company, which aims at ensuring the full understanding, participation and cooperation of all of its employees in all safety and health and welfare related subjects. No safety policy is likely to succeed unless it actually involves work-people themselves and Multi-Tech Engineering Industries L.L.C. will provide competent technical advice on safety and health matters where this is necessary to assist Management in the task.

Multi-Tech Engineering Industries considers safety as a mandatory normal part of all operations.

Health, Safety and Environmental rules and procedures form an integral part of any operation or activity being executed by MTEI, with the same coming first, as "Safety is Always First".

HSE (Factory and Site Operations)

The below procedure is applicable to both the operation of MTEI in the factory, which include material unloading, material shifting, manufacturing processes, packing, storing, loading and other activities, with the above being executed in a well-controlled environment, and to the site operations which include unloading of material, storage, shifting inside and in between floors and other areas, unpacking, installation and other activities, with the conditions differing from one project to another depending on the type of the project and MTEI scope of work in that project.

Responsibilities

Project Manager / Factory Manager

The Project Manager at site or the Factory Manager at the Factory assumes the responsibility on all aspects of Health, Safety and Environment at the site / factory.

His responsibilities include:

- Ensuring the proper implementation of the HSE Management System by all personnel
- Ensuring that suitable and competent HSE personnel are deployed as called for in the HSE Management System
- Ensuring that the HSE requirements are met and are to the highest level and simultaneously up to the clients' expectations
- Manages, monitors and audits the implementation of the HSE Management System and adopts the proper action to ensure that no accidents occur and that the environmental standards and regulations are adhered and complied to.

HSE Representative / Coordinator

The HSE Coordinator shall be responsible for:

- Supervising the implementation of the HSE Management System
- Conducting safety inductions for all MTEI personnel
- Producing all HSE related reports and statistics on regular basis
- Training HSE personnel as needed
- Interfacing with the client on all HSE related subjects
- Taking preventive and corrective actions as needed.

HSE Organization and Communication

All meetings and communication will be done in the English language.

It shall be the responsibility of HSE representative and all concerned including Site Engineer and Supervisor to transfer the conclusions/observations of the meetings to all concerned in either "English" or their "respective Mother tongues".

The objective of this communication shall be to execute the work with "Zero Fatalities", and "Zero Accidents".

Written materials in the form of leaflets written in English or respective mother tongues shall be distributed among the labors as part of HSE promotion.

Safety banners shall be displayed at all prominent locations published with pictures the various safety requirements for particular job condition.

HSE Targets

The primary objective of preparing the Project HSE Plan is to execute the work with "Zero Lost Time Accidents".

The other targets include Zero Environment spills as well.

Collective and Personal Means of Protection

MTEI shall provide all their employees with the necessary and well maintained or new PPE's free of charge. All PPE shall be regularly maintained and kept in good condition. Worn-out or damaged PPE shall be returned for repair, or for disposal and replacement. The mandatory PPE's shall consist of:

- Safety shoes
- Safety Helmets
- Safety goggles
- Hand gloves
- Dust masks
- Coveralls

Other possible extra PPE's shall consist of:

- Safety harness
- Safety jackets
- Ear plugs
- Welding mask

The collective means of protection shall cover:

- First aid kits fully equipped shall be made available at site / site office
- Emergency call centers (Mobile phone numbers of responsible Engineers / Immediate Supervisor)
- Safety trainings
- Notices and posters at all critical points of the work site depicting the need and importance of HSE at work place
- Designated assembly points for emergency evacuation plan (to be planned according to site conditions)

HSE Introduction and Necessary Training

MTEI's employees shall undergo HSE induction training course prior to start of any site installation work. The safety induction for the MTEI personnel shall be carried out by the MTEI HSE representative prior to their commencement of work at site.

The safety induction shall be carried out at site office as soon as the new personnel arrive at site. HSE training shall include the following steps:

General Orientation

- Stresses the importance of HSE and each individual's responsibility
- Orientation on the work place
- Working rules
- Participation in the Tool Box Meeting. The TBM shall be carried out at site prior to start of work. The frequency of TBM shall be every day.
- Hot work permit system

HSE Training for Specific Risk Works

Risk analysis shall be carried out for all risk factored works which includes:

A) Material Loading / Unloading & Mobilization

This comprise of the works related to supply of Carpentry and Joinery items to the site for its installation.

- Full care of products loaded / unloaded
- Skilled drivers with previous knowledge of loading / unloading the goods from their trucks (All drivers shall be given a preliminary safety awareness on arrival at site prior to start of work and extra pair of safety PPE's shall be kept at site / site office in case of an emergency requirement)
- Mobilize products using pallet jacks / trolleys with rubber wheels to move inside the finished building
- All personnel involved in mobilization shall be provided with necessary PPE's

B) Material Assembling & Installation Works

This comprise of the works related to installation of Metal Work Items as per the approved plan layout drawings.

- Proper usage of PPE's during the entire course of work
- General House-Keeping
- Availability of Portable Fire Extinguishers & Fire blankets
- Avoid use of un-warranted hand tools

HSE Promotion

As part of promoting the HSE awareness among the employee's incentives or rewards shall be constituted and "HSE employee of the week" and "HSE employee of the month" shall be honored during the entire installation phase of work.

HSE Administration

The site HSE administration consists of the Project Manager, HSE representative, Site Engineer, Supervisor and other site workers.

All member of the team has well defined tasks or responsibilities in implementing the HSE plan. The HSE representative shall report to the Project Manager on HSE issues and all other workers shall report to the HSE representative for all issues pertaining to HSE. Regular site HSE meetings shall be conducted and all observations shall be recorded. In further subsequent meetings there shall be discussions on the previous minutes of meeting and feedback obtained from all the other concerned.

House Keeping Plan

All the employees shall be responsible for keeping their work place clean at all times. The major objective of the above shall be to:

- Eliminate cause of accidents and fires by removing obstacles and flammables hazards
- Effectively utilize the area and equipment by providing safe and comfortable working conditions
- Create and maintain hygienic and safe working conditions

At the end of each day's work 30 minutes shall be assigned for housekeeping. The Site supervisor shall be responsible for the overall housekeeping and shall ensure the cooperation of all personnel at site for successful implementation of the above activity.

Tool Box Talks

Tool box talks (TBT) is one of the most effective means of eliminating accidents / incidents and enhancing the HSE awareness among the people.

TBT's are held in the close vicinity of the work location, prior to starting of the day work and in general consist of

- Briefing on topics raised in the weekly HSE meetings
- Anticipated potential hazards and control measures
- Safety instructions for equipment and tools
- Confirmation of the necessity of a work permit for the particular job
- Visual check of health conditions of the workers
- Use of PPE's

Inspection of Products and Materials

Products and materials intended for the project shall be subjected to routine inspections. Tools and equipments shall be inspected and tested by competent mechanics or electricians on arrival to the site. Certificate tags shall be displayed on accepted equipments/scaffoldings and details of certification will be forwarded to the client.

Accident / Incident Reporting

The Site Engineer shall immediately report an accident / incident at site to the client HSE representative.

The victim may be given all the first aid requirements at client's clinic if it is a minor accident and request for ambulance through clinics in case of a serious injury and shift the victim immediately to the nearby clinic.

A detailed incident report shall be prepared and submitted to the client. Routine follow-up measures shall be implemented at site to avoid the recurrence of such incidents at site.

First Aid / Fire Fighting Facilities

MTEI shall make every effort in providing portable fire extinguishers and fire blankets as necessary to the site, especially that most of its work involves wood material.

Welding activities, if needed to be executed by MTEI are carried out using the necessary blankets and away from any wood or other material.

Mobile phones of Engineers and Supervisors shall be used as Emergency Call Centers.

Hygiene

The personnel hygiene shall be of utmost importance during the manufacturing work at the factory or during the period of project execution at site.

A mess hall and an area for the welfare facilities of all factory employees is set in the factory, with the same kept in clean conditions at all times.

All site working persons shall be allowed to use one single area at site for messing and welfare facilities. The messing facility & lavatory units are usually provided by the client along with all their sanitation needs, however, MTEI ensures that the same is in a clean condition at all times and advises the Client immediately if the situation is otherwise for his rectification.

Environment

MTEI Management ensures at all times that all of its employees are well aware of the company environmental objectives listed below, and as such work to those objectives:

- Reinstating the areas impacted by the operation of MTEI to its original status, as and when disturbed by MTEI
- Complying with all the environmental Laws and regulations as related to MTEI works in the factory and in the projects.
- Minimize the environmental impact in all activities executed by MTEI
- Minimizing the produced wastage in all manufacturing processes
- Reduce the creation of any pollution
- Eliminate the creation of spills

MTEI assigned HSE Officer at the factory and in every project he is responsible for adopting all actions to ensure meeting the above objectives.

MTEI has been awarded several certificates in return to its outstanding environmental performance and full compliance to the Environmental rules and regulations, with some of these certificates included as Attachment 4.1 to this document.



QUALITY POLICY

Mutli-Tech Engineering Industries L.L.C. Policy and objective is to continue to be one of the leading companies in the Metal Industry in the Gulf region by offering complete solutions related to the Metal Work in any project, while satisfying the quality requirements of the ordered products, the delivery schedule, along with maintaining the cost within the budget agreed with the client for the subject products and works.

MTEI management is committed to the continuous growth of the company, and to diversifying and expanding its activities to what complement its core business in the Metal Industry.

To achieve so, MTEI ensures:

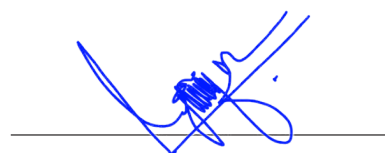
- That the quality of its products is kept at the highest level, by deploying the needed expertize and the suitable latest equipment to its factory, carefully selecting and controlling the raw material, and exerting a full quality control system at the factory and on site during installation.
- Maintaining the full satisfaction of its clients during all phases of work, covering design, manufacturing, installation and after sales service.
- Clear and defined communication in between the clients and MTEI management and in between MTEI management and the factory and the site teams.

The company management team has defined this Quality Policy in relevance to its objectives.

This policy is to be distributed and understood by all MTEI employees.

Company management shall review the Quality Policy and objectives on annual basis or as otherwise deemed suitable for rendering mutual benefit to the company and its client

Date:14-FEB-2010.....



GIRI DHARMARAJAN

INTRODUCTION

The Quality Manual elaborates how MTEI is set and has the adequate resources to achieve the timely production of different products in the Metal Industry to a high standard of quality, while operating and complying with the ISO and other norms, which MTEI is certified for.

The Quality Manual is applicable to the factory of MTEI at UAE as well as to the installation works on site.

Controlled copies of the Quality Manual are being distributed to the factory manager, quality control engineer, procurement officer, project managers and other personnel whose tasks have an effect on the quality of the products, with un-controlled copies of the subject Quality Manual to be passed to other personnel within MTEI organization as and when needed.

This is the 1st edition of the Quality Manual, with the same to be updated on yearly basis, or once modifications are proposed by the recipients of the manual and the management of MTEI agrees to incorporate the same.

COMPANY PROFILE

Legal Name:	<i>Multi-Tech Engineering Industries L.L.C.</i>
Industrial Licence	<i>549775</i>
PO Box:	<i>69849</i>
Head Office:	<i>Sharjah – U.A.E.</i>
Telephone:	<i>971 6 5360003</i>
Foundation Date:	<i>8 March 2007</i>
Company Nationality:	<i>U.A.E.</i>

Multi - Tech Engineering Industries L.L.C. offers complete solutions for all products related to the metal industry, with the company services such as conceptual design, detailed design, to fabrication, erection and maintenance.

Multi - Tech Engineering Industries L.L.C. material range includes Wrought iron, Stainless Steel, Structural Steel, on-Ferrous casting, in addition to being the leading manufacturer of non-Ferrous architectural, ornamental and industrial castings.

Multi - Tech Engineering Industries L.L.C. range of products covers: Special decorative features, Balustrades, handrails and Railings, Structural Steel, Fencing, Pergolas, Garden Furniture, Lamp post, Masharabiya, Car Park shades (PTFE and PVDF), Acoustic Aluminum Ceilings, Perforated Aluminum Cladding, Perforated cast Aluminum Cladding, Corian screens, Metal screens, Corian and metal Skirtings, Grills and Gratings, Architectural doors and gates, Overhead Garage doors, Bollards, Canopies, Miscellaneous steel fabrications, All types of Aluminum Castings, All types of Zinc Castings, All types of Brass / Bronze Castings and Architectural ornamentation.

PROCESSES

The processes affecting the quality of the products delivered to the client and / or installed by MTEI are on the management level, operation level or support level identified along with identifying the responsibilities resources and methods associated with each of these processes.

The subject processes are then monitored, quantified and measured on regular basis through audits, objectives and indicators to determine the effectiveness of each, as well as the deficiencies and shortfalls, to eliminate them, while revising the processes accordingly.

A) Managerial Processes

These processes include understanding the client's needs, providing resources, setting the quality policy, conducting external and internal quality audits, running reviews, controlling of non-conforming products, handling client's complains, taking corrective and preventive actions for products' improvement and measuring client's satisfaction.

B) Operational Processes

These processes include comprehending client's needs, preparing design, fabrication and shop drawings, procuring raw material and running quality control checks on it prior to storage and in manufacturing, packing, labelling, shipping, delivery and storage of the final product on site, and afterwards on the installation works, and then prior to handing over the same to the client, and finally carrying out the after sales service all to the client's requirements and satisfaction.

C) Support Processes

These processes include upgrading of factory machinery based on the need, maintenance of equipment, recruitment of needed personnel, conducting training sessions in all aspects related to Metal Works (technical, safety, quality control, etc...), assessing supplier's performance and acting on replacing or increasing the purchases from a supplier as seems adequate for the performance of the company, managing the contracting process from estimation to handing over to the client and ensuring the security and welfare of all personnel.

ROLE OF THE MANAGEMENT

The management of MTEI, represented by MTEI General Manager, is committed to take all measures, by deploying the needed resources and giving all necessary instructions to implement the Quality Management System, as well as improving the same, with all efforts to be exerted to meet client's requirements and expectations as well as to maintain the client's confidence. The above is detailed in the below steps:

- Establishing the Quality Management System encompassing the Quality Policy and objectives
- Ensuring that all staff are well aware of the client's requirements at all times
- Conducting management reviews and audits
- Ensuring the availability of enough competent resources for implementing the Quality Management System

5.1 CLIENT SATISFACTION

The main target of the management is to achieve the client's satisfaction in all products and services throughout all the stages of execution of a project.

Feedback is obtained from clients on the rendered works and services via the MTEI "Client's Feedback Form" and through maintaining regular contacts with all clients through phone calls or face to face meetings.

Clients' complaints are taken very seriously and are well analysed to comprehend the root cause of the raised complains and resort the same accordingly.

5.2 PLANNED OBJECTIVES

MTEI has put in place certain objectives that emerges from the Quality Policy and pursued the same at the relevant levels and functions of the organization. These objectives are listed below:

- A) Improving the productivity at the factory and at sites by 15% each year

B) Decreasing the wastage in material at the factory by 2% each year

C) Reducing the downtimes of all machines to less than 1 day per month, by conducting preventive maintenance on regular basis and maintaining the needed consumables and spare part in the company stores constantly

D) Improving clients' satisfaction as much as possible at each successive year, with the same to remain at any time as "Satisfied" and above.

E) Optimizing on the operation of the machines and resources thus reducing the cost and being able to be more competitive in the market.

F) Expanding to new clients, markets and countries in steady steps.

G) Achieving all milestones and completion dates in the signed agreements.

MTEI management has identified the resources required to satisfy its clients' requirements and achieve the above objectives, with regard to equipment, manpower, material, factory set-up, agreements with suppliers and others and ensured that the same is deployed to site in a timely manner.

The General Manager of MTEI as well as the senior members in the organization are responsible to ensure that adequately trained personnel are assigned to manage, perform and verify work affecting quality of products and service rendered to clients.

5.3 COMMUNICATION / ORGANIZATION CHART

A communication system is developed in-between all departments in the company to ensure that all information is passed to the concerned personnel in a timely manner, and that Quality requirements are well known to all personnel, while deficiencies in Quality are communicated directly to the concerned personnel to take the necessary action.

The job description is detailed for each position in the organization chart, and distributed to the person holding this position.

The functions of all positions include identifying and recording any action or product non-conforming to the Quality, for taking the necessary action, as to adopting corrective actions, ensuring that preventive actions are executed regularly and following up the case until the non-conformity is cleared.

5.4 MANAGEMENT REPRESENTATIVE

A Quality Management Representative is appointed by the management to ensure the proper implementation of the Quality System, which such representative being in direct communication with the management at all times, with the following tasks being executed by him:

- Reporting to the management as to the performance and compliance of the company to the Quality System on monthly basis
- Supervising the implementation of the Quality Policy
- Following up the internal quality indicators and objectives
- Following up corrective and preventive actions
- Reviewing, amending and upgrading the Quality Manual as seems suitable
- Ensure that all personnel abide by the Quality Manual provisions
- Conducting internal quality audits

5.5 MANAGEMENT REVIEW

The management of the company conducts a Quality review meeting once every three months, to ensure that the Quality Policy is being followed, as well as the re-assess the suitability and efficiency of the Quality System, and the way to improve the same.

The attendees to the above meetings are the management, the management representative and all senior personnel in the company.

The audits results and recommendations, client's complains and feedbacks, processes performance, product conformity reports, equipment and manpower reports are all reviewed during the subjects meetings, with results drawn, and recommend actions set.

Further, the implementation of the actions considered in the previous Quality review meeting are discussed in details, as to what is executed and what is still pending.

In summary, the output of the meeting will be a list of actions to be taken, along with identifying the person(s) to take each action and the date each action should be taken.

PRODUCTS AND SERVICES

MTEI is a specialized company in the Metal Works, with two main activities:

- Manufacturing of products
- Installation of manufactured and procured products
- The raw material being used by MTEI in the manufacturing process include all types of metal, all types of paint, corian material, glass, wood, etc...
- The full details of the products to be supplied and / or installed for a certain client are included within the agreements that are signed in between the client and MTEI and include:
 - Specification of the material
 - Origin of the material
 - Design of the product needed by the client along with detailed shop drawings by MTEI (if available at that stage)
 - Manufacturing drawings (if available at that stage)
 - Instruction for the assembling / installation of the product
 - Maintenance and operation manual (if applicable)
 - Verification, inspection and acceptance criteria for the product

The below stages are progressed following the conclusion of the agreement in between the client and MTEI.

6.1 DESIGN STAGE

Design drawings are received from the client along with the specification of the product needed.

MTEI reviews the design drawings and validates the same, with any clashes and discrepancies identified and discussed / agreed with the client

Shop drawings are prepared by MTEI based on the Design drawings.

All shop drawings are reviewed prior to issuance to ensure adherence to the Quality requirements with regard to drafting standards, material used, material compatibility, meeting client's requirements and the product being conforming to applicable regulatory and legal requirements.

6.2 MATERIAL PROCUREMENT

Purchase Orders for the material to be used for the products' manufacturing processes are placed with approved suppliers that can supply material complying with the specification and in line with the schedule.

- Suppliers are evaluated in accordance to different criteria of which:
- Adopted Quality systems
- Having ISO certification
- Being commercially competitive
- Having the ability to adhere to the delivery schedule
- Having a set-up for the after sale service

Thorough check of the material is carried out by the quality control once the material is received at the factory, with regard to having the necessary documentation and certificates, being in line with the specifications and having no shortage or damages.

6.3 PRODUCTS MANUFACTURING

The production process passes through different stages covering control of production, identification and traceability, product preservation and others.

A)Control of Production

Several processes are used in the manufacturing activities of Metal Work of which:

- Cutting
- Welding
- Casting
- Painting
- Coating
- Assembling
- Packing, labelling and storage

The production in the factory is controlled through:

- Having clear fabrication drawings
- Having clear understanding of the products specifications and characteristics
- Using the suitable equipment
- Having the suitable work environment

The raw material released by the quality department (or from one section in the factory) is received by another section for executing his part of the work.

Once one section finishes his part, the material is checked by the quality control following which it is released to the subsequent section.

B)Identification and Traceability of Products

All manufactured products are identified with a temporary tag that specifies different criteria from agreement reference to project reference to location within the project, to number of pieces, to description of the project and so on in order to ensure full traceability up to the installation of the product and acceptance of the same by the client.

C) Product preservation

All material and products are well preserved during the overall cycle, from the time material is unloaded in the factory to the time the product is manufactured in parts or fully, to the time it is packed, transported, unpacked, assembled and installed.

Finished product is inspected by the quality department and stamped once accepted, after which it is labelled showing the item description and dimensions.

Packing is executed accordingly to suit the transportation method.

D) Product measurement control

Inspection is carried out on all equipment and tools used in the manufacturing process to ensure that the same is calibrated and reflected the exact measurements.

The maintenance team shall ensure that all devices such as testers, gages, micrometers, electronic testers, different types of templates and profiles are calibrated before usage on regular basis.

All measuring equipment shall have the adequate accuracy to provide reliable readings and results, with a maintenance program put in place to ensure so.

IMPROVEMENT OF THE QUALITY SYSTEM

All processes are monitored by MTEI quality team and management, measured and analysed to ensure conformity with the Quality Management System, with the steps taken as below:

A) Monitoring and Measurement

- Client's satisfaction: The extent of client's satisfaction is obtained at different intervals of the project and at the project completion, with a format filled by all clients reflecting their level of satisfaction with the different aspects such as quality, execution schedule, communication, attendance to the requirements, budget, documentation, etc...
- Audits: Audits are carried out on regular basis to determine compliance with the Quality System, with the findings, recommended actions and the time bar for taking these actions included in the Audit Reports and followed afterwards by MTEI management until close out.
- Monitoring Measurement of Processes: The main processes are monitored using performance indicators to evaluate the extent of achievement to the set objectives. Indicators are discussed during the management meetings to take the necessary actions.
- Monitoring of Products Quality: The products' quality is measured at different stages, but mainly along with the completion of a certain product. A complete physical and performance check is run to determine compliance with the Quality System.
- Control of Non-conforming Products: Non-conforming products are identified by the quality control personnel, removed and isolated in specific areas, with an action taken by either removing the non-conformance or by using the product under concession by the management and if accepted by the client when the defects are minimal, otherwise reworking the product is the only option.

In either of the above actions, a quality re-verification is run prior to release, with all steps taken documented.

- Data analysis: All Data is analysed on regular basis to have a complete picture as to the clients satisfaction, conformance of the manufactured product to the requirements and effectiveness of the adopted processes and the Quality Management System

B) IMPROVEMENT

The purpose behind the measurement, monitoring and analysis of the data related to the Quality Management System is to identify any shortfalls, problems, constraints, drawbacks and issues faced in the processes and leading to non-confirming products, or to the non-satisfaction of the client, in order to act on it immediately, thus improving and enhancing the overall Quality System on continuous basis.

Learned lessons and quality observations received from different employees are tabulated, reviewed by the quality personnel and management and made available to all employees for implementation.

Corrective actions are taken in a timely manner, with the same being a crucial part of the Quality Management System.

Preventive actions are adopted as necessary in the manufacturing and installation works with the same being an integral part of the Quality Management.

INSTALLATION WORKS

The installation process of the manufactured products is subject to the Quality System of the company, as well as to the quality requirements of the client and the project where the works are being executed.

A quality control plan is prepared by the project team for every awarded project, where installation is part of MTEI scope of work, covering all the above quality requirements, with the same submitted to MTEI management and the client for their review and approval, following which it is put into implementation.

The Quality Plan covers all the stages of the work, starting from the receipt of the manufactured products on site, to the checking of the same by the site quality control, to the inventory and storing of the material, material unpacking, transportation, installation, inspection, acceptance by the client, maintenance and handing over.

Defects, damages and shortages in the material are identified and reported, with the same communicated to the factory for conducting the necessary repairs or replacements, depending on the action recommended by the quality control after inspecting the material, and to supply any shortages.

Suitable personnel are assigned in every project to implement the Quality System of MTEI, and be the focal point for all quality related aspects in the project.

CERTIFICATIONS

MTEI has in its profile several certifications related to quality, with MTEI endeavours continuing in order to reach the highest certifications in Quality especially in the manufacturing of products at the factory.

Attached are few quality certifications given to MTEI:

Attachment 5.2.1 to Section 5:

Certificate for Compliance of Management System as per ISO 9001:2008

Attachment 5.2.2 to Section 5:

Certificate by Arch of Europe for Quality and Technology in GOLD Category

Attachment 5.2.3 to Section 5:

Certificate by QC100 Total Quality Management Model

Certificate for Compliance of Management System

ISO 9001:2015

Certificate

Standard **ISO 9001:2015**Certificate Registr. No. **01 100 1922609**Certificate Holder: **Multitech Engineering Industries L.L.C.**P.O. Box - 69849, Emirates Industrial City,
Sharjah, United Arab Emirates

including the branch offices according to annex

Scope: Design, Manufacture, Fabrication and Installation of Structural,
Architectural and Ornamental Metal Works.Proof has been furnished by means of an audit that the
requirements of ISO 9001:2015 are met.Validity: The certificate is valid from 2020-02-21 until 2023-02-20.
First certification 2020

2020-02-21

TÜV Rheinland Cert GmbH
Am Grauen Stein · 51105 Köln

www.tuv.com



**Certificate by Arch of Europe for Quality and Technology
In GOLD Category**

F R A N K F U R T 2 0 1 4

Certificate

**MULTI TECH
ENGINEERING INDUSTRIES LLC**

For immeasurable contribution to the business world,
for high standing and professionalism
demonstrated by prestigious performance,
Business Initiative Directions presents its
special recognition award.

**ARCH OF EUROPE
FOR QUALITY AND TECHNOLOGY
IN GOLD CATEGORY**

Frankfurt, April 13, 2014



José E. Prieto
Executive President of BID,
Business Initiative Directions

<<SPCODE>>

BUSINESS INITIATIVE DIRECTIONS • General Yagüe, 11 • 28020 Madrid • SPAIN • TEL: +34 91 597 33 69

Certificate by QC100 Total Quality Management Model

B I D Business Initiative Directions
Principles of the QC100 Total Quality Management Model



Commitment of MULTITECH ENGINEERING INDUSTRIES LLC to Quality

Our company accepts quality as a factor of development to become more competitive.

MULTI TECH ENGINEERING INDUSTRIES LLC is committed to publicizing this Quality Culture with employees, suppliers, clients and the community, supported by the QC100 Total Quality Management Model, the principles of which are the following:

- 1** Quality is a consequence of valuing customer satisfaction and obtaining positive business results.
- 2** Meet the quality levels established in the company in accordance with the QC100 Points of Quality.
- 3** Encourage participation and teamwork for decision making.
- 4** Satisfy the needs of our clients and meet their expectations.
- 5** Provide human resources, both technical and economic, to achieve continuous improvement and respect for the environment.
- 6** Manage human resources in our company to achieve the maximum potential.
- 7** Make employees aware of the importance of concentration on the most profitable areas of activity, to achieve the best business results.

The achievement of these seven principles by MULTI TECH ENGINEERING INDUSTRIES LLC will foster improvement for clients, employees, suppliers and all of the other persons who make up the company.



Frankfurt, April 13, 2014

Director
MULTI TECH ENGINEERING INDUSTRIES LLC

G-23-2331/AEG

The criteria expressed in this document is the ideological support of the International Arch of Europe Award, administered by B.I.D. Business Initiative Directions and endorsed by the QC100 Total Quality Management Model. General Yagüe, 11 - 28020 Madrid-Spain - T. +34 91 597 33 69 - www.bid-org.com

COMPANY PLANS / VISION

6.1 MTEI Plans / Vision

Multi-Tech Engineering Industries L.L.C. was established in 2007 with the vision to become one of the leading companies in the Metal fabrication Industry in the Gulf region.

Realistic, however challenging plans were and are being set by the management of MTEI on yearly basis specifying the targets that are to be achieved in the subject year, with all proper efforts put in place for the set plans to materialize.

With the above, MTEI has developed throughout the years in the below directions:

- ✓ Geographically, MTEI projects started at UAE and spread to many other countries inside and outside the Gulf, such as Qatar, Oman, Egypt, Lebanon, etc....

The upcoming target is to cover more areas and more countries in the region, whether on supply basis or supply and installation basis

- ✓ MTEI services at this stages covers different types of projects, including building projects, industrial projects, heavy civil projects and others.

The upcoming target is to cover all metal fabrication works in all types of projects.

- ✓ MTEI factory has, area wise, expanded throughout the years to more than 4 times of its original size, with the production and storage facilities now well organized to optimize on the production capacity.

The upcoming target is to further expand the production and storage facilities as needed, while opening other factories in other countries within the region comes under MTEI consideration as and when the need be.

- ✓ Equipment wise, the numbers, types and range of equipment in the factory has radically changed and increased, to become more sophisticated and up to date, while covering most of the aspects of production in the Metal Industry.

The upcoming target is to continue in deploying to the factory the latest equipment with regard to technology, and to continuously supplement the existing equipment with whatever is needed to cover all types of production in the Metal Industry.

- ✓ Manpower wise, MTEI has significantly increased its manpower at the factory and in the projects, with many competent engineers, formen and skilled manpower in different disciplines are now part of MTEI.

✓

The upcoming target is to continue in deploying competent manpower to the company and to ensure at all times that all services to all clients are being carried out in a timely and professional manner.

- ✓ MTEI circle of clients and approvals has significantly increased, with MTEI now on the approved list of manufacturers of different clients and in different countries.
- ✓ The upcoming target is to further widen the circle of clients MTEI deals with, and to attain more approvals from governmental as well as private reputable institutions, while maintaining at all times the satisfaction of all clients in all aspects related to MTEI services.

In summary, MTEI plan is to continue in taking all the steps needed for attaining the vision under which and for which MTEI was established, aiming to become the leading company in the Gulf region in the manufacturing of metal structures and elements within the coming 5 years.

Elite 3 @ Sports Redence, Dubai Sports City

Podium level mashrabiya

Client: Triplanet International FZC

Material: Powder coated aluminum sheet



Elite 4 @ Sports Redence, Dubai Sports City

Podium level mashrabiya

Client: Triplanet International FZC

Material: Powder coated aluminum sheet



Elite 5 @ Sports Redence, Dubai Sports City

Podium level mashrabiya

Client: Triplanet International FZC

Material: Powder coated aluminum sheet



Elite 6 @ Sports Redence, Dubai Sports City

Podium level mashrabiya

Client: Triplanet International FZC

Material: Powder coated aluminum sheet



Elite 8 @ Sports Redence, Dubai Sports City

Podium level mashrabiya

Client: Triplanet International FZC

Material: Powder coated aluminum sheet



Bahwan Tower, Burj Khalifa District ,Dubai

Aluminium Podium Level Mashrabiya

Client: Utmost Properties, Suhail Bahwan Group

Material: Powder Coated Aluminium Sheet



Nastaran Towers

Cast Aluminum Balcony, Staircase Handrails

Decorative Aluminum Mashrabiya

Client: RAAM Limited

Material: Aluminum extrusion profiles, Cast aluminium



Presidential Palace, Abu Dhabi Car Park Shades with PVC Fabric Aluminum Handrails & Balustrades

Client: The Executive Committee For The Presidential Palace Project



Nation Riviera Beach Club at The St. Regis Abu Dhabi

Aluminum trellis

Client: International Capital Trading

Material: Powder coated aluminium

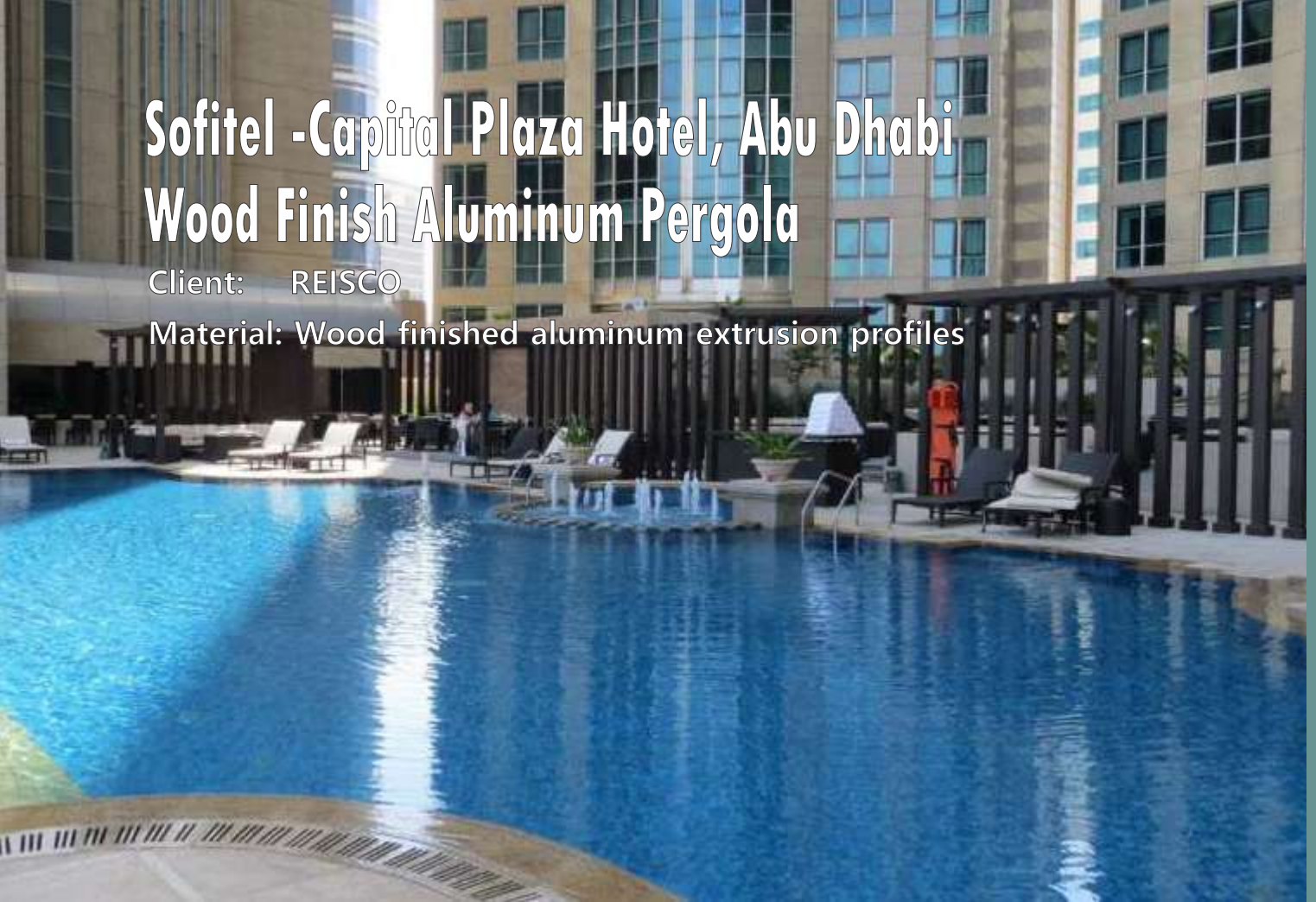


Sofitel -Capital Plaza Hotel, Abu Dhabi

Wood Finish Aluminum Pergola

Client: REISCO

Material: Wood finished aluminum extrusion profiles



Culture village landscape project, Duabi

Decorative aluminum covers for feeder boxes

Client: Dubai Properties Group

Material: Powder coated aluminium Sheet & aluminum profiles



Souq Extra Mall, Dubai

Perforated Aluminium Ceiling

Client: Souq Extra LLC

Material: Powder coated aluminum sheet



International School of Choueifat Aluminum Fence and Gate

Client: International School of Choueifat

Material: Aluminum extrusion profiles



M1 Building, Beirut, Lebanon

Structural Steel Bridges For Interconnecting Buildings

Client: M1 Real Estate

Material: Galvanized steel structure with 3 coat epoxy paint



Mövenpick Hotel Colombo

Stainless Steel Staircases And Balustrades

Client: Softlogic Holdings

Material: Stainless steel with nickel coating



Al Ain Stadium

Aluminium Trellis

Client: Aafaq Holdings LLC

Material: Wood finished aluminium extrusions

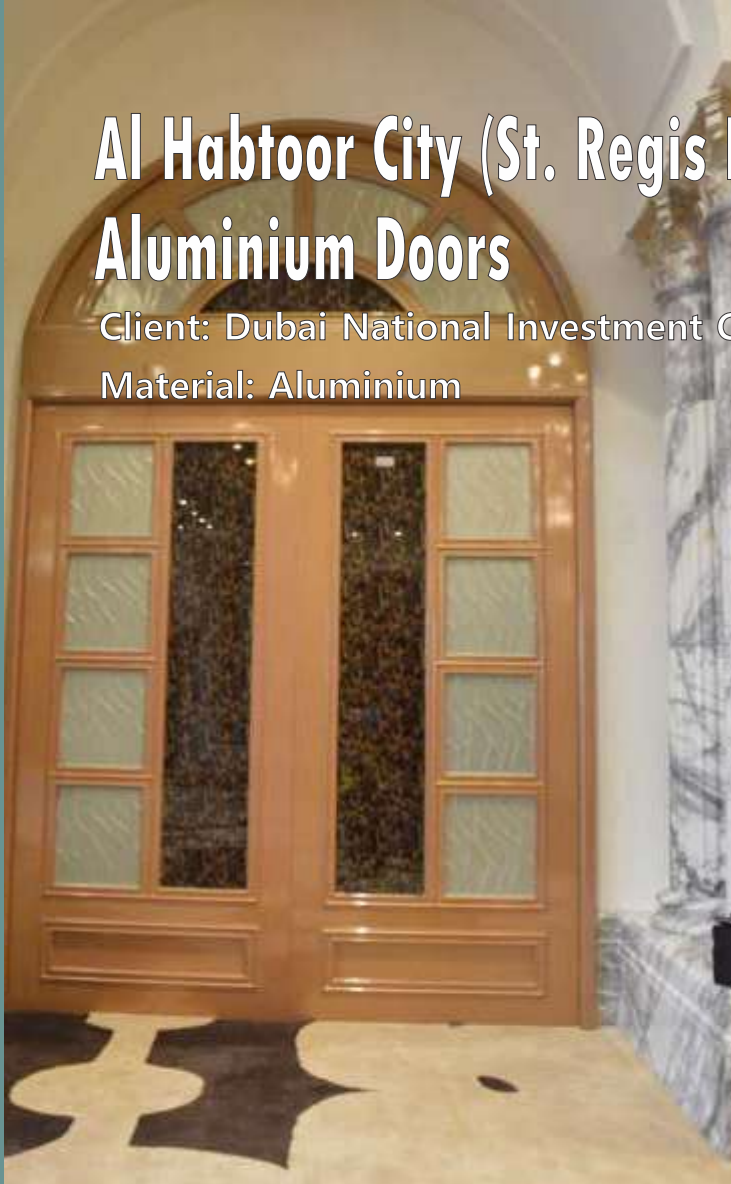


Al Habtoor City (St. Regis Hotel Winter Garden)

Aluminium Doors

Client: Dubai National Investment Co. L.L.C

Material: Aluminium



Multipurpose Hall at Lusail Sports, Qatar Architectural Car Park Shades

Client: Qatar Olympic Committee

Material: PVC fabric (VERSEIDAG)

Galvanised steel structure with 3 coat epoxy paint



Multipurpose Hall at Lusail Sports, Qatar

Podium Shades

Client: Qatar Olympic Committee

Material: PTFE fabric (VERSEIDAG)

Galvanised steel structure with 3 coat epoxy paint



Multipurpose Hall at Lusail Sports, Qatar

Stainless Steel Handrails

Client: Qatar Olympic Committee

Material: Stainless Steel (Grade: 316)



Multipurpose Hall at Lusail Sports, Qatar

Stainless Steel Handrails With Glass Balustrades

Client: Qatar Olympic Committee

Material: Stainless Steel (Grade: 316)

Heat Strengthened Laminated glass





Multipurpose Hall at Lusail Sports, Qatar

Acoustic dome lining

Client: Qatar Olympic Committee

Material: Wood finish Aluminium Composite Sheet,
Rock Wool, Aluminium Sheet

Multipurpose Hall at Lusail Sports, Qatar Stainless Steel Bleacher Balustrades

Client: Qatar Olympic Committee

Material: Stainless Steel (Grade: 316)



Qatar Faculty of Islamic Studies Corian Balcony Screen

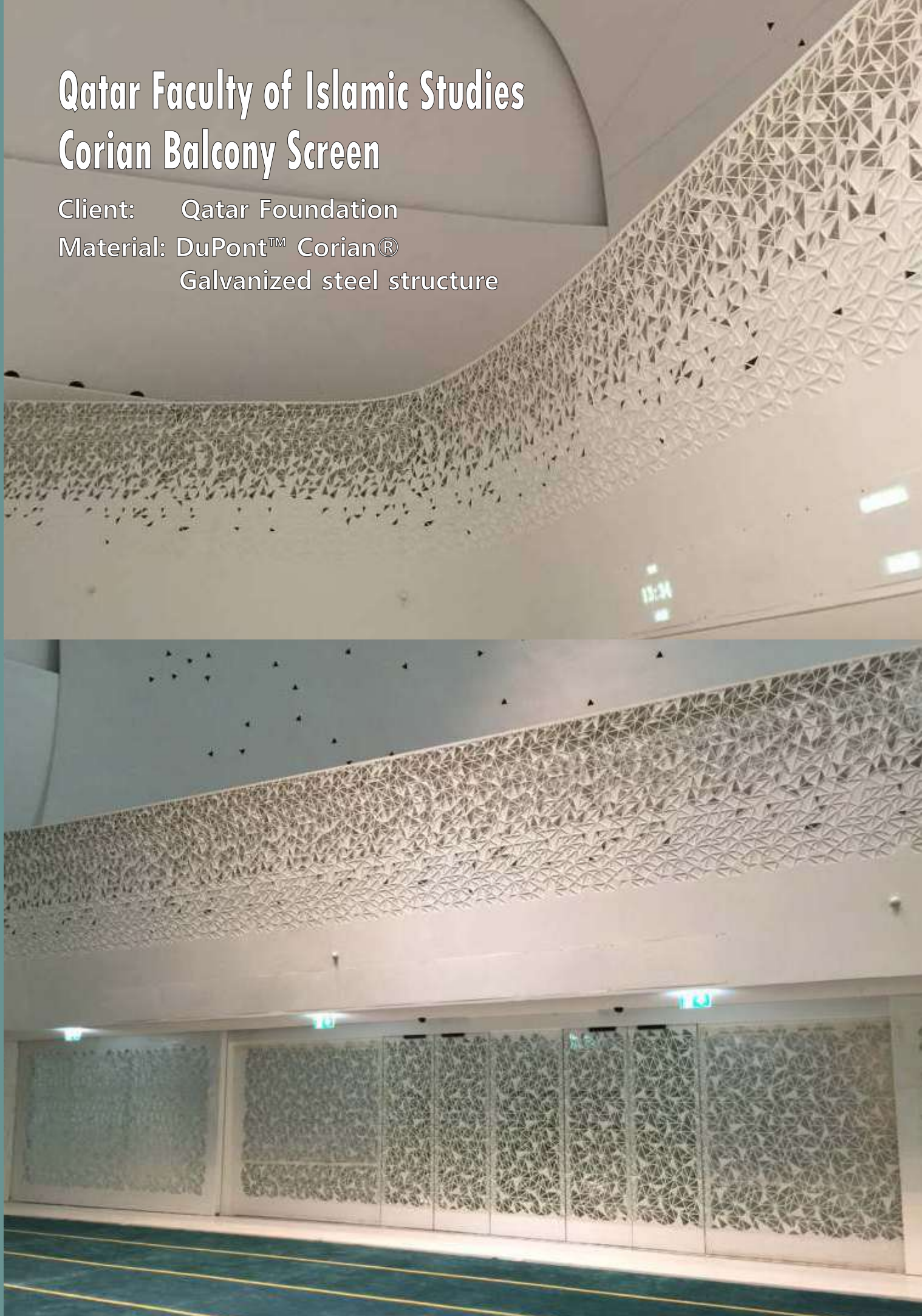
Client: Qatar Foundation
Material: DuPont™ Corian®
Galvanized steel structure

Rock Wool, Aluminium Sheet

Qatar Faculty of Islamic Studies Corian Balcony Screen

Client: Qatar Foundation

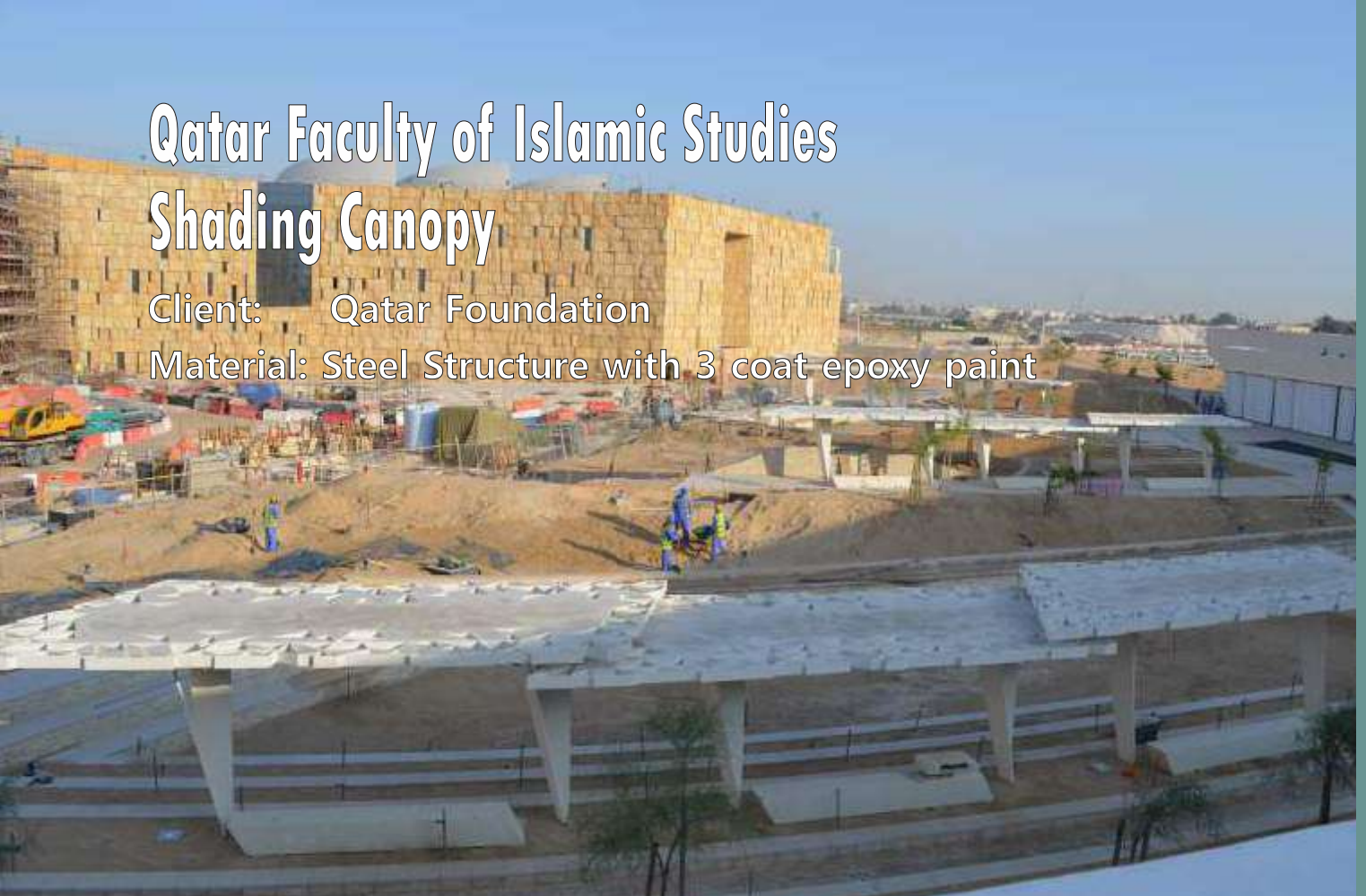
Material: DuPont™ Corian®
Galvanized steel structure



Qatar Faculty of Islamic Studies Shading Canopy

Client: Qatar Foundation

Material: Steel Structure with 3 coat epoxy paint



Qatar Faculty of Islamic Studies Galvanized Steel Grating

Client: Qatar Foundation

Material: Galvanized Steel Grating



Hamad International Airport, Qatar

Perforated Cast Aluminium Cladding for ATC Tower

Client: New Doha International Airport

Material: Cast Aluminium

Galvanized Steel Structure



CHESS CLUB BUILDING, SHARJAH

Aluminium Boundary Wall Fence

Client: Sharjah Municipality

Material: Aluminium Extrusions



VIP Bridge at Nad Al Sheba Race Course

Steel Guardrails and Aluminum Handrails

Client: Roads & Transportation Authority, Dubai

Material: Steel and Aluminium Extrusions



Residential Villa at Sharjah

Main Gate and Retaining Wall

Client: Mr. Abu Thalib

Material: Cast aluminium



Residential Villa at Sharjah

Staircase Handrail

Client: Mr. Abu Thalib

Material: Cast aluminium



City Season Hotel Building, Dubai

Decorative Screens and Balcony Handrails.

Client: City Season Hotel

Material: Cast aluminium

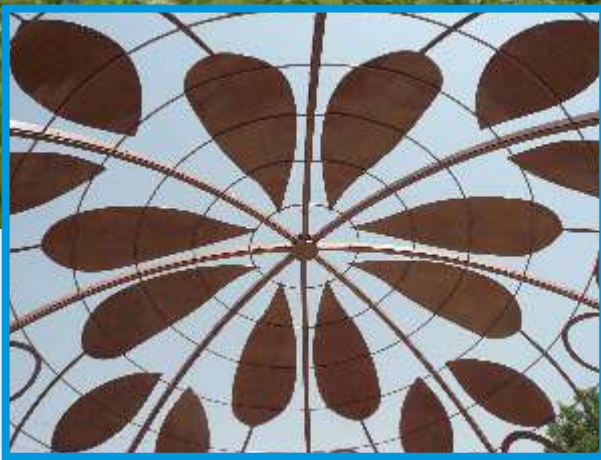


PRIVATE VILLA-1 AT AL AIN ROAD (PHASE-1)

SUMMER PAVILION

Client: SHEIKH ISSA BIN ZAYED AL NAHYAN

Material: Cast aluminium and Galvanized Steel Structure



PRIVATE VILLA at DUBAI

Boundary Wall Gate and Staircase Handrail

Material: Cast aluminium



MOTOR CITY, DUBAI

Boundary Wall Fence

Client: Future Vision Gen Maint

Material: Cast aluminium



PRIVATE VILLA at SHARJAH

Wood finish powder coated aluminium Gazebo

Material: Cast aluminium



Al Barari, Dubai

Bollards

Material: Cast aluminium



Material: Stainless steel



Al Barari, Dubai

Bollards

Material: Stainless steel



Material: Galvanized steel



PEDESTRIAN BRIDGES

HANDRAILS & CLADDING

Material: Steel



AL GRUM, ABU DHABI

HANDRAILS

Material: Aluminum



The Marmoom Reserve, Dubai

HANDRAILS & CEILING

Material: Aluminum



MY CITY CENTRE MASDAR, ABU DHABI

CLADDING

Material: Aluminum

SELECTED PROJECTS' PHOTO GALLERY



Section 8: Legal Documents / Bankers / Contacts

8.1 LEGAL DOCUMENTS:

- A) Industrial License of Multi-Tech Engineering Industries L.L.C.**
Included as *Attachment 8.1.1 to Section 8*
- B) Industrial Register Certificate of Multi-Tech Engineering Industries L.L.C.**
Included as *Attachment 8.1.2 to Section 8*
- C) Sharjah Chamber of Commerce and Industry Membership registration of Multi-Tech Engineering Industries L.L.C.**
Included as *Attachment 8.1.3 to Section 8*
- D) Federal Industrial License of Multi-Tech Engineering Industries L.L.C.**
Included as *Attachment 8.1.4 to Section 8*
- E) Dubai Economy, Commercial license of Multi-Tech Engineering Industries L.L.C.**
Included as *Attachment 8.1.5 to Section 8*
- F) Dubai Chamber, Membership Certificate of Multi-Tech Engineering Industries L.L.C.**
Included as *Attachment 8.1.6 to Section 8*

8.2 Bankers

Multi-Tech Engineering Industries L.L.C. has built-up throughout its years of operation solid relationship with major banks and financial institutions throughout the Gulf region, especially in the U.A.E.

The above is the outcome the healthy financial situation of MTEI, which in turn is a result of MTEI success in completing its executed projects on time and to the set budget.

MTEI has built trust with main banks in the U.E.A., thus giving MTEI the ability and flexibility to obtain and in swift manner significant financial facilities as and when needed to cover:

- a) All types of bonds and guarantees required by the clients,
- b) All types of payments to suppliers, including letters of Credits, etc....
- c) All and any other financial facilities needed for MTEI operation in the factory and in the projects.

Below is a list of the banks with whom MTEI has good business relations:

- a) Sharjah Islamic bank, Main Branch Sharjah
- b) Emirates Islamic bank, Sheikh Zayed Road branch, Dubai
- c) Mashreq bank, KAA Street branch, Sharjah
- d) Rak bank, King Faisal Street Branch, Sharjah
- e) FGB, Sharjah Branch

8.3: Contacts

U.A.E

Name:

Position:

PO Box:

Address:

Tel:

GOVERNMENT OF SHARJAH
Economic Development Department



حُكُومَةُ الشَّارِقَةِ
دائرة التنمية الاقتصادية

شهادة سجل صناعية
**Industrial Register
Certificate**



تفاصيل الرخصة License Details

License No.	549775	Registration No.	48865	رقم السجل
Expiry Date	2022/03/07	Issue Date	2007/03/08	تاريخ الإصدار
Capital	500000	رأس المال		
Trade Name	MULTI TECH ENG. IND. LLC	الاسم التجاري	التقنيات المتعددة للصناعات الهندسية. ذ م م	
Legal status	Limited Liability Company	الشكل القانوني	شركة ذات مسؤولية محدودة	

المدير: جبردها رما راجان لانيثا
أنشطة الرخصة: صناعة وإنتاج زجاج مقوى، طلاء المعادن، تشكيل المعادن، صناعة الورق والورق المقوى المموج، تصدير، استيراد، صناعة الأثاث المعدني، صناعة لوازم الأنابيب الحديدية، سبك، مسبوكات المعادن غير الحديدية، صناعة الأسقف المعلقة المعدنية، صناعة الأبواب المعدنية المقاومة للحريق، صناعة الأطر والهيكل المعدني اللازمة للتشييد وأجزاء منها، صناعة واجهات من الألمنيوم، صناعة الحمامات وأحواض الغسيل وما يمثلها المعدنية، صناعة الأبواب والنوافذ وأطرها والمصاريع المعدنية
العنوان: الشارقة، الصيعة تجاري/الشارقة - خلف شارع الإمارات مكتبة - أرض مسورة - شيرة ملك عثمان محمد شريف عبدالله زمان



تاريخ الطباعة: 2021/03/10
رقم المستخدم: 39178

- This document is official. It doesn't need to be stamped or signed.
To view license details please visit SEDD web site: www.sedd.ae
- Distribution of flyers is strictly prohibited in public and residential areas.
Distribution is allowed through:

- هذه الوثيقة رسمية ولا تحتاج لعلامة أو توقيع.
للتأكد من صحة البيانات، يرجى زيارة موقع الدائرة: www.sedd.ae
- يمنع منعاً باتاً توزيع الإعلانات في الأماكن العامة والأحياء السكنية. التوزيع فقط عن طريق الصحف، المجلات وصناديق البريد.

GOVERNMENT OF SHARJAH
Economic Development Department



حكومة الشارقة
دائرة التنمية الاقتصادية

رخصة صناعية Industrial License



دليل المراقبة الصناعي
Sharjah Industrial Guide
2019



تفاصيل الرخصة License Details

Issue Date	2007/03/08	تاريخ الإصدار	License No.	549775	رقم الرخصة
Expiry Date	2022/03/07	تاريخ الإنتهاء	Registration No.	48865	رقم المسجل
Trade Name	MULTI TECH ENG. IND. LLC				الاسم التجاري
Legal status	Limited Liability Company				الشكل القانوني

التقنيات المتعددة للصناعات الهندسية. ذ م م
شركة ذات مسؤولية محدودة

أطراف الرخصة License Members

الحصص	الصفة	رقم الهوية / الجواز	الجنسية	إسم المستثمر	رقم المستثمر
Shares	Type	ID/Passport No.	Nationality	Investor Name	Investor No.
%90	شريك	784196571326493	الإمارات	عثمان محمد شريف عبدالله زمان	15935
%10	شريك	784196769621937	الهند	جيردها رما راجان لاليتا	55332

جيردها رما راجان لاليتا

صناعة وإنتاج زجاج مقوى، حلاء المعادن، تشكيل المعادن، صناعة الورق والورق المقوى، تصنيع، استيراد، صناعة الآلات المعدنية، صناعة لوازم الأنابيب الحديدية، سبك مسبوكات المعادن غير الحديدية، صناعة الأسقف المعلقة المعدنية، صناعة الأبواب المعدنية المقاومة للحريق، صناعة الأطر والهيكل المعدنية اللازمة للتشييد وأجزاء منها، صناعة واجهات من الألمنيوم، صناعة الحمامات وأحواض الغسيل وما يماثلها المعدنية، صناعة الأبواب والنوافذ وأطرها والمصاريع المعدنية

الشارقة - الصنعة التجارية / الشارقة - خلف شارع الإمارات - مكتبة أرض مسورة - شيرة ملك عثمان محمد شريف عبدالله زمان

رقم الهاتف المتحرك: 0506778465
صندوق البريد: 69849 الشارقة

الملاحظات Notes

رقم اللوحة 166901
- إضافة نشاط



2021/03/10

تاريخ الطباعة

39178

رقم المستخدم

- This document is official. It doesn't need to be stamped or signed.
To view license details please visit SEDD web site: www.sedd.ae

- Distribution of flyers is strictly prohibited in public and residential areas.
Distribution is allowed through:

- هذه الوثيقة رسمية ولا تحتاج لخطم أو توقيع.
لتأكد من صحة البيانات يرجى زيارة موقع الدائرة: www.sedd.ae
- يمنع منعاً باتاً توزيع الإعلانات في الأماكن العامة والأحياء السكنية للتوزيع فقط عن طريق الصحف، المجلات وصناديق البريد.

غرفة تجارة وصناعة الشارقة
Sharjah Chamber of Commerce & Industry

شهادة عضوية
Membership Certificate

شهادة تسجيل
Membership Registration Certificate For Year

2021

إن غرفة تجارة وصناعة الشارقة بناءً على قانونها رقم (٩) لعام ٢٠١٨م
Sharjah Chamber of Commerce and Industry according to the law no. (9) 2018

التقنيات المتعددة للصناعات الهندسية. ذ م م
MULTI TECH ENG. IND. LLC

قد سجلت : Company Name

رقم العضوية : 077187 : Membership Number

رقم الترخيص : 549775 : License NO

رقم السجل التجاري : 48865 : Commercial Registration NO

الجنسية : : Nationality

الامارات

الشكل القانوني : شركة ذات مسئولية : Legal Form

المحدودة (ذ.م.م)

الكلية : : Category

المصنعة ب

جنسية الشركاء : : Partners Nationality

الامارات، الهاد

العنوان : : Address

الشارقة المصنعة تجاري/الشارقة خلف شارع الإمارات مكتب أرض مسورة شيرة ملك عثمان محمد شريف عبدالله زمان

لممارسة نشاط : : Activity

تشكيل المعادن ، صناعة وانتاج زجاج مقوى ، صناعة الورق الموج والأوعية الورقية ، استيراد ، تصدير ، صناعة لوازم الانابيب المعدنية ، صناعة المعادن غير الحديدية غير الثمينة ، صناعة الإنشاءات المعدنية ، صناعة الأبواب المعدنية ضد الحريق ، صناعة الأسقف المعلقة المعدنية ، صناعة الستائر المعدنية ، صناعة واجهات من الألمنيوم ، صناعة أحواض الزراعة من الألمنيوم ، صناعة الأثاث المعدني ، طلاء المعادن ، Corrugated Paper & Paperboard Manufacturing ، تشكيل المعادن ، صناعة وانتاج زجاج مقوى ، Importing , Exporting , Steel Tubes Fittings Manufacturing , Non-Ferrous Metal Casting , Steel Hangars & Sheds Manufacturing , Fireproof Metal Door Manufacturing , Metal False Ceiling Manufacturing , Metal Curtain Manufacturing , Aluminium Fronts Manufacturing , Aluminum Planting Basins Manufacturing , Metal Furniture Manufacturing ، طلاء المعادن

ملاحظات : : Remarks

SED D

تاريخ الانتهاء : 3/2022

UNAS

QR Code

تاريخ الإصدار : 8/3/2007

Sharjah Chamber of Commerce & Industry

HEAD OFFICE

M 136674



اقتصادية دبي
DUBAI ECONOMY



رخصة تجارية Commercial License

تفاصيل الرخصة / License Details

License No.	794180	رقم الرخصة
Trade Name	MULTI TECH ENG. IND.LLC - DUBAI BRANCH - REP. OFFICE	الإسم التجاري
Legal Type	Branch of Company Registered in other emirates	الشكل القانوني
Expiry Date	14/11/2021	تاريخ الإصدار
D&B D-U-N-S ®	0	رقم الرخصة الأم
Register No.	رقم السجل التجاري	عضوية الغرفة
Issue Date	15/11/2017	تاريخ الإصدار
Main License No.	794180	رقم الرخصة الأم
DCCI No.	295761	عضوية الغرفة

الاطراف / License Members

Share / الحصص	Role / الصفة	Nationality / الجنسية	Name / الاسم	No./ الشخص
100.00%	Co. Owner / مالك الشركة	United Arab Emirates / الإمارات	التقنيات المتعددة للصناعات الهندسية ذ.م.م	685119
	Manager / مدير	India / الهند	MULTI TECH ENG. IND.LLC جيردها رما راجان لاليتا	692387
			GIRI DHARMARAJAN LALITHA	

نشاط الرخصة التجارية / License Activities

Representative Office

مكتب تمثيل

العنوان / Address

Phone No	تليفون	P.O. Box	صندوق بريد
Fax No	فاكس	Parcel ID	رقم القطعة
Mobile No	هاتف متنحرك		مكتب رقم 304 - ملك صندوق دبي لدعم المالي - بريد دبي - القوز 3
			البريد الإلكتروني / Email

الملاحظات / Remarks

Print Date 24/11/2020 11:26 تاريخ الطباعة Receipt No. 13729736 رقم الإيصال



الإمارات
THE EMIRATES

يمكنك الآن تجديد رخصتك التجارية من خلال الرسائل النصية القصيرة. أرسل رقم الرخصة إلى 6969 (دو/اتصالات) للحصول على إذن الدفع.
Now you can renew your trade license by sending a text message (SMS). Send your trade license number to 6969 (Du/ Etisalat) to receive payment voucher.

Get FREE access to Zoho One for the first year
الحصل على زوهو ون مجاناً للسنة الأولى



وثيقة إلكترونية معتمدة وصادرة بدون توقيع من دائرة التنمية الاقتصادية. لمراجعة صحة البيانات الواردة في الرخصة يرجى زيارة الموقع www.dubaided.gov.ae
Approved electronic document issued without signature by the Department of Economic Development. To verify the license kindly visit www.dubaided.gov.ae

UNITED ARAB EMIRATES
MINISTRY OF ENERGY & INDUSTRY



الإمارات العربية المتحدة
وزارة الطاقة والصناعة

رقم القيد : 4396
تاريخ القيد : 29/11/2007

رخصة إنتاج صناعي

الجنسية
الإمارات العربية المتحدة
الهند

أصحاب الترخيص :
الاسم
عثمان محمد شريف عبد الله زمان
جيردها رما راجات لاليتا

الإسم التجاري : التقييات المتعددة للصناعات الهندسية ذ م م

النشاط : صناعة الاجزاء المعدنية الانشائية

هاتف : 065360003

العنوان : ص.ب : 69849

المنطقة : الصجعه

المدينة : مدينة الشارقة

الإمارة : الشارقة

إدارة التراخيص الصناعية

تاريخ الاصدار : 19/11/2020

تاريخ الانتهاء : 18/11/2021

رقم الاتصال : 03244217384539123925



غرفة دبي DUBAI CHAMBER

شهادة تسجيل العضوية Membership Certificate

License no. 794180

Membership no. 296761

Registration no. 1313419

Trade Name MULTI TECH ENG. IND.LLC -
DUBAI BRANCH - REP.
OFFICE

Legal Status Branch of Company Registered in

Activity Representative Office

Member Since 15/11/2017

Date of Issue 15/11/2017

Expiry Date 14/11/2021

رقم الرخصة 794180

رقم العضوية 296761

رقم السجل التجاري 1313419

الاسم التجاري التكتيات المتحدة للصناعات الهندسية ذ.م.م -
فرع دبي - مكتب تمثيل

الشكل القانوني فرع لشركة مقرها في إمارة أخرى

نوع النشاط مكتب تمثيل

تاريخ الانساب 15/11/2017

تاريخ الإصدار 15/11/2017

تاريخ الإنتهاء 14/11/2021

Remarks

This certificate shall be invalid incase of any alteration
without chamber's authorization

For online verification of this Certificate, please visit our website
<http://www.dubaichamber.ae/verify>

غرفة تجارة وصناعة دبي
Dubai Chamber of Commerce & Industry

هاتف: 4 2280000 (+971) | Tel (Outside UAE) | 800 CHAMBER (800 2426237) | Tel (Within UAE) | P.O. Box 1457 - Dubai, U.A.E.

فاكس: 4 2211646 (-971) | customercare@dubaichamber.ae | www.dubaichamber.ae

الملاحظات

تعتبر هذه الشهادة لاغية في حال أي كسب أو تعديل عليها دون
اعتماد ذلك من الغرفة

للتأكد من صحة بيانات الشهادة يرجى الرجوع إلى موقع الغرفة
<http://www.dubaichamber.ae/verify>



شهادة السجل التجاري Commercial Registration Certificate

Certificate No	:	3838173	:	رقم الشهادة
Issue Date	:	08/12/2020	:	تاريخ الإصدار
License No	:	CN-3838173	:	رقم الرخصة
ADCCI No	:	10016130	:	رقم عضوية الغرفة
License Type	:	Commercial License	:	نوع الرخصة
Legal Form	:	UAE Branch - Sharjah	:	الشكل القانوني
			:	الإسم التجاري
Trade Name	:	MULTI TECH ENG.IND L.L.C - BRANCH OF ABU DHABI 2	:	تاريخ تأسيس المنشأة
Establishment Date	:	08/12/2020	:	تاريخ الإنشاء
Expiry Date	:	07/12/2022	:	تاريخ الانتهاء
MOHRE	:		:	وزارة الموارد البشرية والتوطين
GDRFA	:	747289	:	الإدارة العامة للغمرات وشؤون الأجانب

Members					الأطراف
الهاتف Phone	البريد الإلكتروني Email	النسبة Share	المسند Role	الجنسية Nationality	المالك / الشريك Owners / Partners
971544418812	giri@multitech.ae	100	مالك Owner	دولة الإمارات العربية المتحدة United Arab Emirates	التقنيات المتعددة للصناعات الهندسية ذ.م.م. MULTI TECH ENG.IND L.L.C

Capital Details	تفاصيل رأس المال
العملة : درهم إماراتي AED : Currency	المدفوع : 300000 Paid

Address	العنوان
	المصنف م 0.45 ، مبنى سمو الشيخ عبدالله بن زايد بن سلطان و اخرين

Activities	الأنشطة
- Industrial Cooperative Marketing - Construction Metal structures Installation	- تسويق تعاوني صناعي - تركيب الهياكل المعدنية الإنشائية
Official Phone :	971544418812
Official Email :	giri@multitech.ae
Receipt No :	2112000206310
Receipt Date :	08/12/2020 06:24:55 PM



إدارة التراخيص التجارية





Commercial License

Emerging Economic Establishment

رخصة تجارية

منشأة اقتصادية ناشئة

License No	:	CN-3838173	:	رقم الرخصة
ADCCI No	:	10016130	:	عضوية الغرفة
Establishment Card MOHRE	:		:	وزارة الموارد البشرية والتوطين بطاقة المنشأة
Establishment Card GDRFA	:	747289	:	الإدارة العامة للإقامة وشؤون الأجانب - بطاقة المنشأة
Legal Form	:	UAE Branch - Sharjah	:	الشكل القانوني
	:		:	الإسم التجاري
Trade Name	:	MULTI TECH ENG.IND L.L.C - BRANCH OF ABU DHABI 2	:	تاريخ تأسيس المنشأة
Establishment Date	:	08/12/2020	:	تاريخ الإصدار
Issue Date	:	08/12/2020	:	تاريخ الإنتهاء
Expiry Date	:	07/12/2022	:	

الصفة Role	الجنسية Nationality	الملاك / الشركاء Owners / Partners	الرمز No.
مالك Owner	دولة الإمارات العربية المتحدة United Arab Emirates	التقنيات المتعددة للصناعات الهندسية ذ.م.م MULTI TECH ENG.IND L.L.C	549775

Commercial Activities	:	الأنشطة التجارية
- Construction Metal structures Installation	:	- تركيب الهياكل المعدنية الانشائية
- Industrial Cooperative Marketing	:	- تسويق تعاوني صناعي
Address	:	العنوان
	:	المصنف م 0,45 : ~ مبنى سمو الشيخ عبدالله بن زايد بن سلطان و اخرين (تم تحصيل رسوم خدمات الدفاع المدني)

وثيقة معتمدة وصغيرة بدون توقيع أو ختم من دائرة التنمية الاقتصادية - أبوظبي. للتحقق من صحة البيانات الواردة في الرخصة برجاء زيارة الموقع <http://www.ded.abudhabi.ae>
Approved document issued without signature or stamp by the Department of Economic Development - Abu Dhabi. To verify the license kindly visit <http://www.ded.abudhabi.ae>

Official Email	:	giri@multitech.ae	:	البريد الإلكتروني الرسمي
Official Mobile	:	971544418812	:	رقم التواصل الرسمي



وزارة الداخلية
القيادة العامة للشرطة المدنية
MINISTRY OF INTERIOR
GEN. COMMAND OF CIVIL DEFENSE

<http://ded.abudhabi.ae>

10016130 :

CN-3838173 :



شهادة العضوية
Membership Certificate

بناءً على قانون غرفة تجارة وصناعة أبوظبي رقم 27 لسنة 2005 م وتعديلاته

من الجنسية:

2

فقد تم تسجيل :

لممارسة النشاط :

-460812-

العنوان :

جنسية الشركاء:

الشكل القانوني:

ويسرى مفعولها حتى تاريخ : 08/12/2022

صدرت بتاريخ : 08/12/2020

<https://digital.abudhabichamber.ae/Portal/#/certificate-validation>



محمد هلال المهيري
المدير العام

غرفة أبوظبي الرقمية
Abu Dhabi Digital Chamber



IN-COUNTRY VALUE CERTIFICATE

Certificate ID: **106680**

Issue Date: **24.03.2021**

Valid Until: **16.10.2021**

Multi Tech Eng .Ind .LLC

49.93%

Company General Information

License No.: **549775**

Company Type: **SME in UAE**

Financial Year End Date: **31.12.2019**

Company based in: **Within UAE**

Company Business: **GOOD MANUFACTURER**

For Cases of Re-Certification

Re-Certification (*) No.:

Reason for this Re-Certification

Signed By

On behalf of Supplier

Name:

Giri Dharmarajan Lalitha

Designation:

Managing Director

Verified as per ICV Agreed Upon Procedures (AUP)

On behalf of Certification Body

Name:

Jaffar A. Rupawala

Designation:

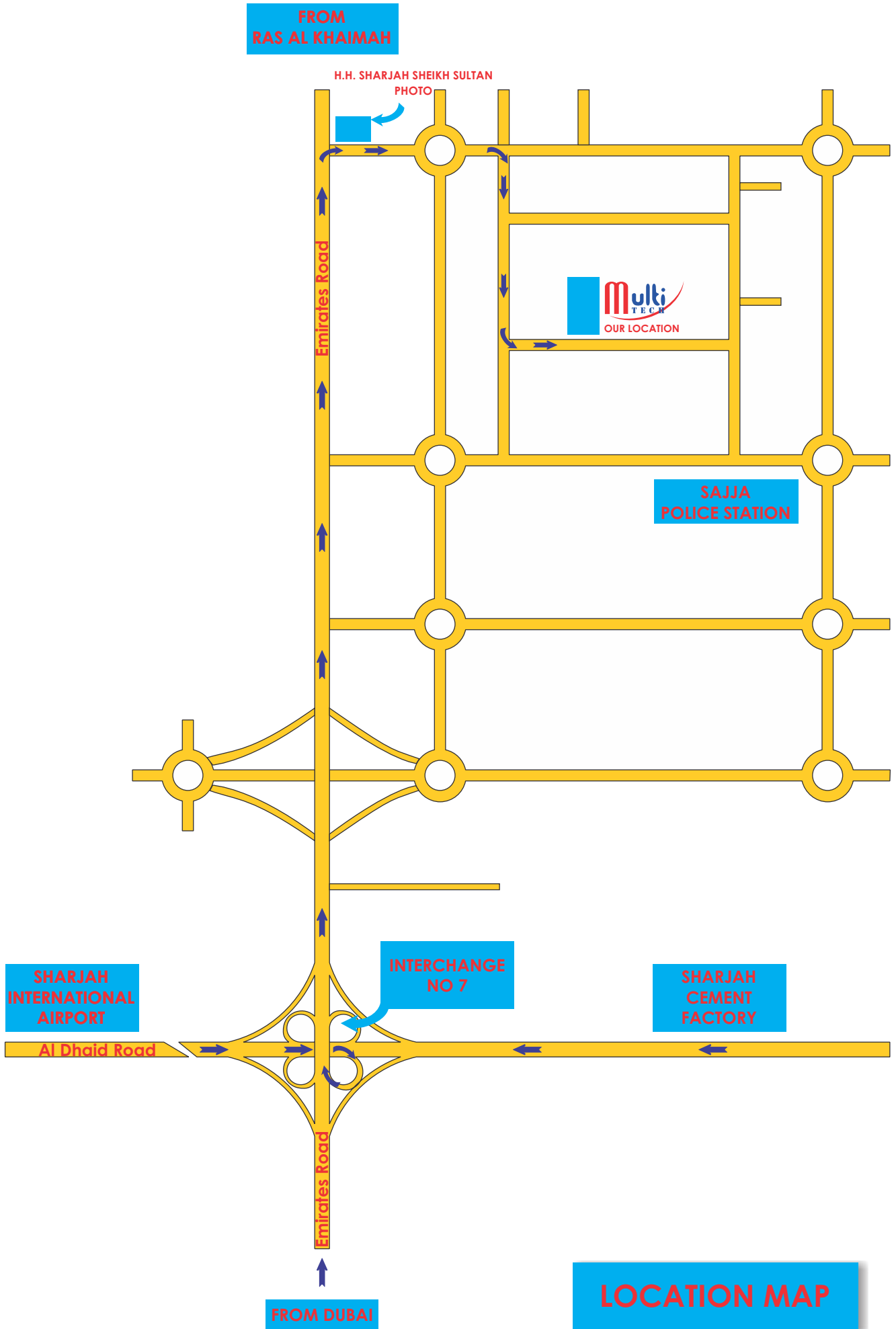
Partner

Electronically signed by
Jaffar A. Rupawala

Company:

Mazars

Certificate Issued Based on ICV Version: 3.0



LOCATION MAP



Management
System
ISO 9001:2015



www.tuv.com
ID 9108658645



www.multitech.ae

Visit Us on Facebook