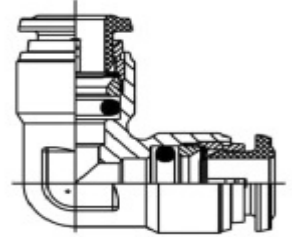


ROTEX

INDUSTRIAL MACHINERY TRADING LLC



We would like to introduce our company that has been in Industrial Business trading since 2010,

We have been an established and popular company with an excellent track record for the best customer satisfaction. We have never compromised on the quality and the services provided to the customer, we believe in keeping the customers happy and providing them with products at a very competent price, we have an excellent staffs who will guide you with their best ideas by keeping in constant touch with your company and informing about the market trends,

Please feel free to keep in touch with us about any of your business related requirements/queries. Please note that we also specialize in designing flyers and services for promoting activities in the presently market trends.

And we are also Industrial Automation people in the field of Pneumatics, Hydraulics, and Industrial Automation & PLCs with well-trained and experienced professionals.

Also, we are glad to inform you that we are authorized agent for



HAFNER *pneumatic* - GERMANY • **AZ** *pneumatica* - ITALY • **VESTA** srl - ITALY

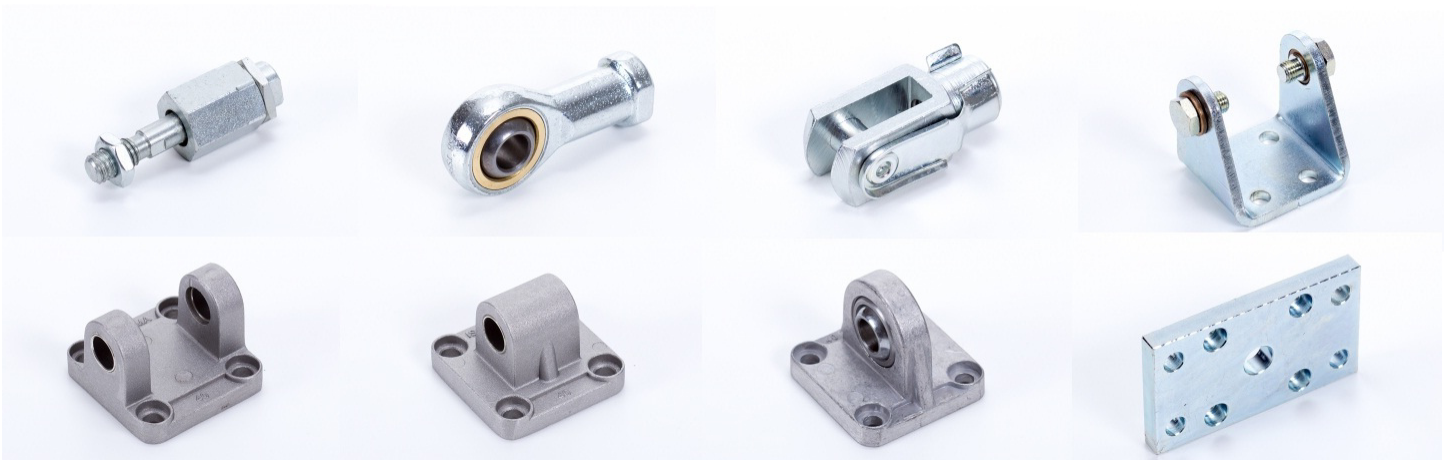
PNEUMATIC CYLINDERS:

Single Acting Cylinder • Double Acting Cylinder • Rod less Cylinder • Short Stroke Cylinder

Compact Cylinders • Bellow Cylinder • Clamping Cylinder • Tie Rod Cylinder • Mini Cylinder

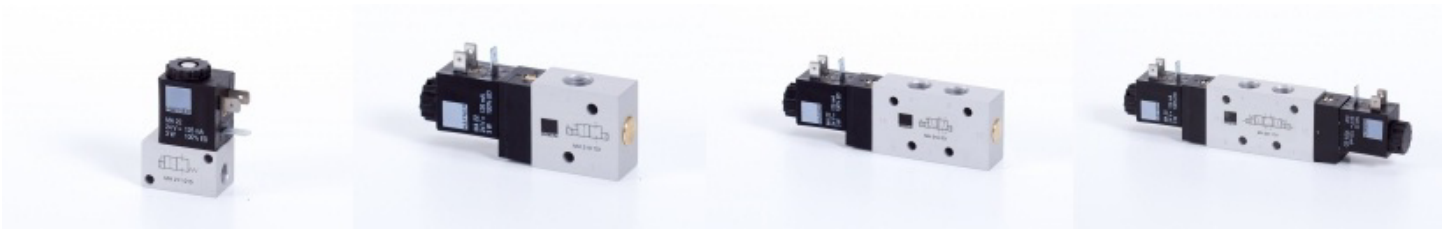


CYLINDERS MOUNTINGS:



SOLENOID VALVES:

2/2 • 3/2 • 5/2 • 5/3 way Solenoid valves

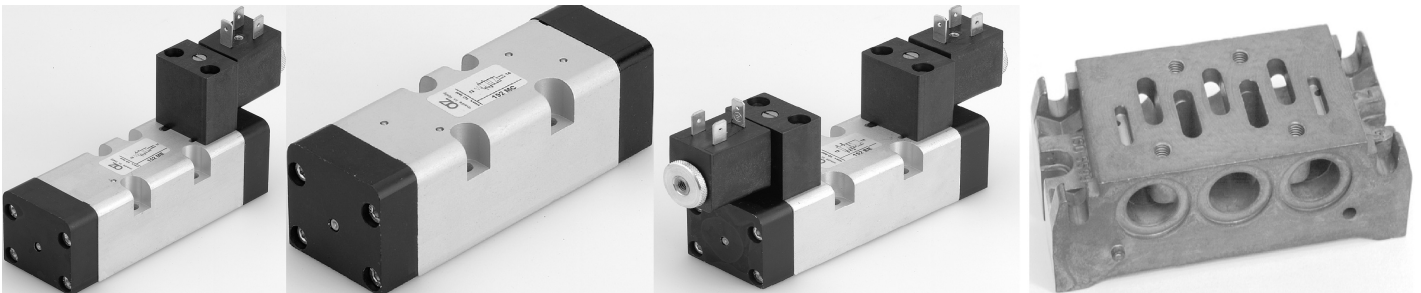


PILOT VALVES:

2/2 • 3/2 • 5/2 • 5/3 way Pneumatic actuated valves & logic elements



ISO SOLENOID VALVE & PILOT VALVE



PANEL MOUNTING VALVE:

3/2 • 5/2 • 4/3 • 7/3 Pneumatic valves for panel mounting Wide range of actuating elements



MECHANICALLY ACTUATED VALVE & LEVER ACTUATED VALVE:

3/2 • 5/2 way mechanically actuated valves Actuated by stem or roller lever Roller lever valves

3/2 • 5/2 • 5/3 way lever actuated pneumatic valves with spring-return or indexed



FRL UNIT – CLASS LINE – A

FILTER REGULATOR LUBRICATOR • FILTER REGULATOR • FILTER • REGULATOR • LUBRICATOR



FRL UNIT – FUTURA LINE – FS

FILTER REGULATOR LUBRICATOR • FILTER REGULATOR • FILTER • REGULATOR • LUBRICATOR



PRESSURE GAUGE

PRESSURE GAUGE, REAR CONNECTION 1/4 & 1/8 SERIES G 50, G 63, GC & M



PRESSURE SWITCH THREAD TYPE & FLANGE TYPE 1/8 & 1/4, NO/NC , NO & NC



PNEUMATIC FITTINGS, ACCESSORIES & TUBES



FITTINGS SOLUTIONS -KONFIT S.R.L. is a company specialized in the fittings field for pneumatic plant engineering.



TORK Valve & Automation

TORK industrial control valves consist of Solenoid Valves, Actuators, Pulse valves, Pneumatic angle seat valve, Actuated ball valves, Actuated butterfly valves, plug valves, linear globe process valves and their accessories



RA...DA / RA...SR



RSY...DA



RA 40.3P (90°)
RA 40.8P (180°)



RA 40.2D (120°)
RA 40.8D (180°)

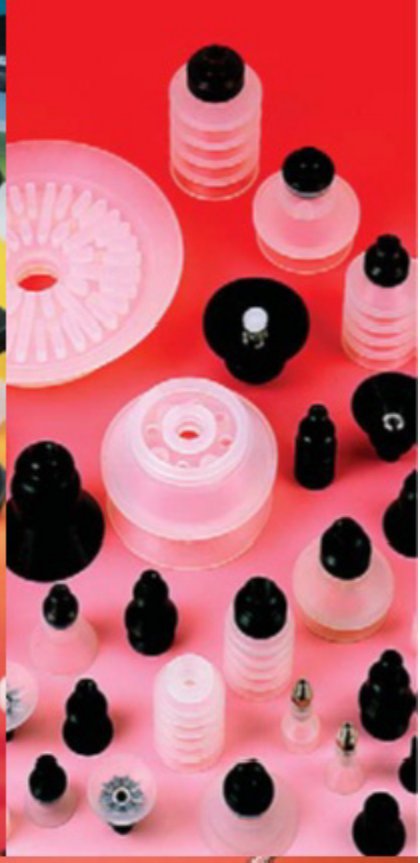


HTM sensors wide Application in Food processing, Petro chemical plants, Water & Sewage treatment plants, Desalination plants, Printing, Packaging, Defense, Electronics, Automobile and Process industry to name a few

 <p>LOW COST PROXIMITY SENSORS</p> <ul style="list-style-type: none"> STANDARD RANGE SENSORS LOWEST COST OF ALL THE MAJOR BRANDS CSA APPROVED WITH LIFETIME WARRANTY <p>MORE INFO</p>	 <p>EXTENDED RANGE PROXIMITY SENSORS</p> <ul style="list-style-type: none"> DOUBLE THE STANDARD RANGE HIGH TORQUE BARREL WITH WRENCH FLATS 4-VIEW LED AND LIFETIME WARRANTY <p>MORE INFO</p>	 <p>LONG RANGE PROXIMITY SENSOR</p> <ul style="list-style-type: none"> TRIPLE THE STANDARD RANGE PROTECT SENSORS FROM CONTACT M12 WITH 6 mm RANGE <p>MORE INFO</p>
 <p>AUTOMOTIVE SENSORS</p> <ul style="list-style-type: none"> DOUBLE RANGE WITH WRENCH FLATS 100°C TEMPERATURE RATING PTFE COATED FOR WELD SPATTER <p>MORE INFO</p>	 <p>WELD FIELD IMMUNE SENSORS</p> <ul style="list-style-type: none"> WELD FIELD IMMUNE OPERATION PTFE COATED FOR WELD SPATTER 100°C TEMPERATURE RATING <p>MORE INFO</p>	 <p>METALHEAD™ PROXIMITY SENSORS</p> <ul style="list-style-type: none"> 1-PIECE STAINLESS STEEL HOUSING LASTS LONGER THAN PLASTIC SENSORS SEALED FROM LIQUIDS AND OIL <p>MORE INFO</p>
 <p>METALHEAD™ FOOD GRADE SENSORS</p> <ul style="list-style-type: none"> 1-PIECE 316 STAINLESS STEEL 100°C TEMPERATURE RATING EXTENDED SENSING RANGE <p>MORE INFO</p>	 <p>MINI FIXED-MOUNT SENSORS</p> <ul style="list-style-type: none"> MINIATURE FOR TIGHT MOUNTING SPACES IDEAL FOR IN-DIE SENSING MOUNTING HOLE FOR EASY INSTALLATION <p>MORE INFO</p>	 <p>CAPACITIVE PROXIMITY SENSORS</p> <ul style="list-style-type: none"> LEVEL CONTROL AND NON-METALLIC PRESENCE DETECTION PRE-WIRED CABLE OF ANY LENGTH PLASTIC OR STAINLESS STEEL HOUSINGS <p>MORE INFO</p>
 <p>SAFETY LIGHT CURTAINS</p> <ul style="list-style-type: none"> CAT. 4 AND CAT. 2 SAFETY LIGHT CURTAINS RUGGED C-CHANNEL CONSTRUCTION EASY MOUNTING AND DIGITAL ALIGNMENT <p>MORE INFO</p>	 <p>SENSOR PROTECTION DEVICES</p> <ul style="list-style-type: none"> SENSOR PROTECTION DEVICES FOR DOWNTIME REDUCTION QUICK-MOUNT COLLARS FOR SIMPLE TWIST-LOCK MOUNTING SPRING-MOUNTS TO PREVENT BREAKAGE ON CONTACT <p>MORE INFO</p>	 <p>FIELD CONNECTORS</p> <ul style="list-style-type: none"> QUICK CABLE REPAIRS AND CONNECTIONS METAL SCREW TERMINALS FOR A TIGHT CONNECTION COMPATIBLE WITH DEVICENET BLOCK CONNECTIONS <p>MORE INFO</p>
 <p>PHOTOELECTRIC SENSORS</p> <ul style="list-style-type: none"> PHOTOELECTRIC SENSORS AND LASERS FOR A WIDE VARIETY OF SENSOR APPLICATION SOLUTIONS <p>MORE INFO</p>	 <p>M18 PHOTOELECTRIC SENSORS</p> <ul style="list-style-type: none"> DURABLE METAL HOUSING QUICK-CONNECT FOR EASY INSTALLATION NEW AVAILABLE LASER MODELS <p>MORE INFO</p>	 <p>IP69K PHOTOELECTRIC SENSORS</p> <ul style="list-style-type: none"> DURABLE STAINLESS STEEL IP69K FOR WASHDOWN AREAS AND AROUND CHEMICALS AND OIL AVAILABLE IN DCS, RETROREFLECTIVE AND THRU-BEAM <p>MORE INFO</p>
 <p>QUICK-CONNECT SENSOR CABLES - M12</p> <ul style="list-style-type: none"> LOW PRICES WITH THOUSANDS IN STOCK FOR SAME-DAY SHIPPING AVAILABLE IN LOW-COST PVC, OIL-RESISTANT PUR AND SPATTER RESISTANT PTFE ANY STYLE AVAILABLE WITH PRE-INSTALLED PROTECTIVE SILICONE JACKET <p>MORE INFO</p>	 <p>PNEUMATIC CYLINDER SENSORS</p> <ul style="list-style-type: none"> SIZES FOR MOST POPULAR CYLINDERS PISTONED CONNECTORS FOR EASY INSTALLATION PNP, NPN OR REED OUTPUTS <p>MORE INFO</p>	 <p>HIGH TEMPERATURE WELD FIELD IMMUNE METALHEAD™ SENSORS</p> <ul style="list-style-type: none"> WELD FIELD IMMUNE CHROMIUM BLACK SPATTERGUARD™ COATED FOR WELD SPATTER RESISTANCE 120 °C TEMPERATURE RATING <p>MORE INFO</p>



ANVER produces a wide range of standard and custom vacuum lifters, offering material handling solutions for all applications. Electric, mechanical, air-powered and battery Powered Vacuum Lifters are all available. Our applications engineers will help you select the right vacuum lifter, system or components for your needs and budget. Increase your productivity with dependable products and systems from ANVER.





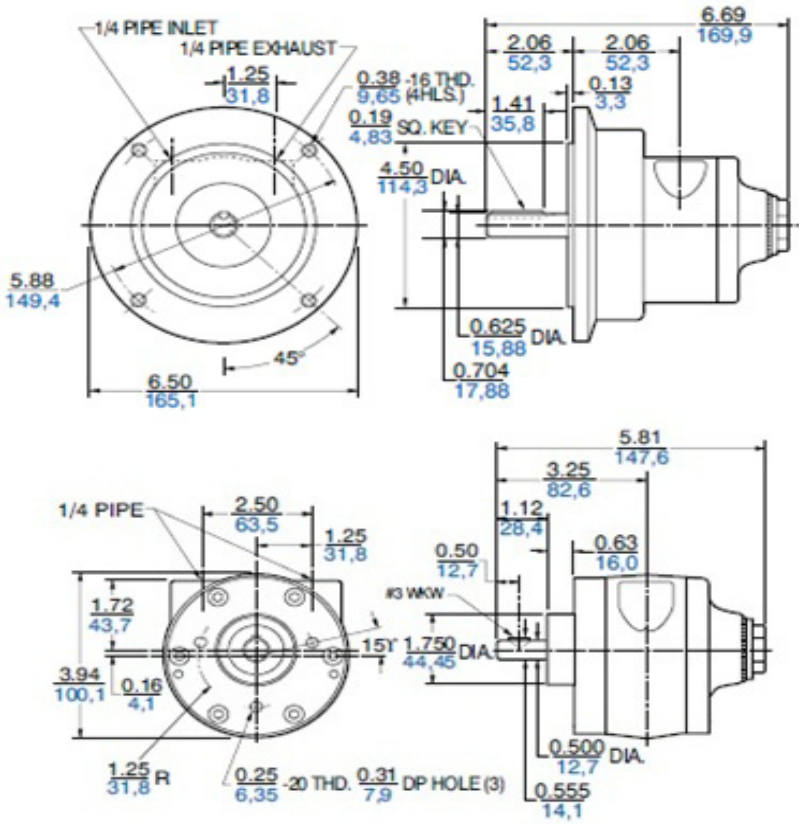
comprehensive application spectrum and a broad product line, as well as an annual production of more than 140 million units, we are the world market leader for gas springs and dampers.



Air Motors

up to 11/2 HP, speeds from 300 to 3,000 rpm, max. pressure 100 psi (7 bar)

Product Dimensions (inches, mm)





Auto Drain Solenoid Valve, NC, for Air Compressor



CS-720

Pilot Operated, Air Compressor Drain Solenoid Valve

Application: compressors, filters, dryers

Voltage: 230, 220V, 110V, 24V, 12V AC, 24V, 12V DC

Maximum temperature: 90 ° C condensate

Protection Class: IP65 plug

Seal: NBR, FKM

Way: 2/2 way normally closed and maximum 16 bar.

Waiting Time: 1.0 ... 59 min

Drain Time: 1.0 ... 59 sec

Flow max. Condensate 576 l / h @ 7bar (e)

OUR BRANDS:



Best Regards,

Rotex Industrial Machinery Trading L.L.C

PO Box: 37793 | Dubai | United Arab Emirates

Tel: 971 4 3470377 | Fax: 971 4 3473776

E-mail: rotex@eim.ae