



ميټرو لخراطعة المعادن  
**METRO METAL FABRICATION**

**PRE-QUALIFICATION**



P.O.Box # 111984, Abu Dhabi, Musaffah - 37  
United Arab Emirates

Tel: +971 2 5516711, Fax: +971 2 5516722

Mob: +971 509642526, +971 552219269, +971 507820869

E-mail: [metrofab@eim.ae](mailto:metrofab@eim.ae), [www: metrometalme.com](http://www.metrometalme.com)

## **TABLE OF CONTENTS**

### **SECTION:1**

- 1. COVERING LETTER**
- 2. LIST OF PROJECTS**
- 3. TRADE LICENCE**
- 4. QUALITY ASSURANCE CERTIFICATE**
- 5. PROJECT EXECUTED PHOTOGRAPHS**





ميترولخراطة المعادن

METRO METAL FABRICATION



## COMPANY PROFILE

### **INTRODUCTION**

Since its Inception in March 2002, **"Metro Metal Fabrication."** leads the way with total solutions and innovative approaches in Metal Fabrication. Our standard of services and expertise are destined to encompass the complete remnants of the Architectural metal products and Glazing Industry.

We are the pioneers in Stainless Steel, Mild Steel, Brass, Copper Etc. (Architectural Metal Works) Aluminium & Glass.

### **OPERATIONS**

Our Head Office and the Marketing office is in Abu Dhabi and represented through out the Emirates by our Marketing & Sales Executives. The Manufacturing sites are at two distinct locations in Abu Dhabi.

Our manufacture of Stainless Steel, Mild Steel, Aluminium and Glazing works consist of both quality and craftsmanship. We also manufacture Ornamental metal craft in innovative designs.

Human resources are our main assets. We have a dynamic work force to achieve the best quality product and craftsmanship. We are privileged to have well trained Sales Engineers and Sales Managers who are able to advice the customers concerning the choice, advantages and suitability of the Metro Metal Products range. Our service team is in high alert 24 hours a day to attend to customer's services & queries.

Strategically located in UAE

National Company engaged in Manufacturing and Trading.

Main Office : Abu Dhabi

Factory : Mussafah, Abu Dhabi

We believe in team work

## **PRODUCTS**

As fabricators and installers of Stainless Steel, Mild Steel, Aluminium & Glass, various metals and glazing structural products it has in its array various solutions to offer for:

Stainless Steel, Mild Steel, Aluminum - Swing Gates & Sliding Gates, Balustrades, Window Grills, Balcony Grills & Furniture.

Conventional curtain walling, 2 way and 4 way structural glazing, Skylights, Shop fronts, Doors/Windows, Wall Claddings, Stair case & Balustrades, Railing and Ladders, Clusters etc.

Garage Doors & Electrical Operators, Sectional Overhead doors, Décor Doors, Flush and Solid wood doors, Sliding gate operators, Rolling shutters & Barriers operated doors.

## **ORGANIZATION**

The company has a conventional pyramid type management structure with the BOD & GM at the top. Middle management is comprised of operational managers for projects, technical, finance, purchase, planning and commercial functions. To support all of them, the company has at its base a strong committed team of qualified supervisors, technicians and skilled workers.



**Foundry – Fabrication - Glazing**

**Stainless Steel & Metal Works**

**Doors & Operators**

**We are structuring our organization to meet the challenges and imposing threats beyond the millennium**



## **QUALITY**

Quality assurance and control are strictly observed at all levels beginning from random sampling of received materials, process inspections at various levels of manufacture and inspection at sites during execution of projects.

EDP is extensively used for Project Management, CAD and Inventory Management, Procurement of Material for the Projects are done from renowned suppliers all over the world. Surface treatment viz, anodizing, powder coating, Duraner coating or Wet spray coating as applicable to the project specification are done by professionally certified treatment plants. Our company professes highest level of confidence in the practice of modern technology available in this and we are committed to providing the same to our clientele.

## **OUR GOALS**

To serve the masses with quality products, timely delivery and competitive prices.

Be a world class player in the market with quick transition to customer demand pattern changes.

To introduce the products and services of world renowned manufactures as a key distributor and provide good after sales service.

Confirm to ethical practices and provide highest attention to employee welfare & safety.



**We employ Quality Audit in every process.**



# Commercial License

## رخصة تجارية

License No : CN-1010383 : رقم الرخصة  
Unified ID for ADCCI : 233424 : الرقم الموحد لعضوية الغرفة  
الشكل القانوني : مؤسسة فردية  
Legal Form : Establishment  
الإسم التجاري : ميترو لخرائط المعادن  
Trade Name : Metro Metal Fabrication  
Issue Place : Abu Dhabi : مكان الإصدار  
Establishment Date : 27/08/2007 : تاريخ تأسيس المنشأة  
Issue Date : 11/05/2016 : تاريخ الإصدار  
Expiry Date : 10/05/2017 : تاريخ الإنتهاء

نوع الشراكة Partner	الجنسية Nationality	الوصف Description	الرقم No.
مالك Owner	الإمارات العربية المتحدة United Arab Emirates	حمده محمد زوجه محمد سيف محمد بطي المهيري HAMDA MOHAMED .W.O.MOHAMED SAIF ALMUHAIR	20049010

Commercial Activities : الأنشطة التجارية  
- Metal And Iron Works - الأعمال المعدنية والحديدية  
Address : العنوان  
مصنع الصناعية, م 37 . ق 63 . مكتب رقم 1, بناية / بهاء راشد ناصر المزروعى

تشهد غرفة أبوظبي بموجب القانون رقم 27 لعام 2005 بأن المنشأة المذكورة أعلاه قد سجلت لدينا

Abu Dhabi Chamber certifies that the above mentioned establishment has been registered in accordance with the law No.27 of 2005

وثيقة معتمدة وصادرة بدون توقيع أو ختم من دائرة التنمية الاقتصادية - أبوظبي. للتحقق من صحة البيانات الواردة في الرخصة برجاء زيارة الموقع <http://www.ded.abudhabi.ae>

Approved document issued without signature or stamp by the Department of Economic Development - Abu Dhabi. To verify the license kindly visit <http://www.ded.abudhabi.ae>

This Document is Considered As Commercial Register



غرفة أبوظبي  
ABU DHABI CHAMBER

تعتبر هذه الوثيقة بمثابة سجل تجاري







# Certificate of Assessment

Awarded to

**METRO METAL FABRICATION**

at

P.O.BOX NO: 111984, M-37, MUSSAFAH INDUSTRIAL AREA, ABU DHABI, UAE

Quality Registrar Systems certify that the management system of the above organization has been audited and found to be in compliance with the QRS requirements for registration of the management system standard detailed below:

**ISO 9001:2008**

Quality Management Systems

Scope of work

**METAL AND IRON WORKS**

Certificate No: AQU-10195

Originally Registered: 15 DEC 2012

Latest Issue: 15 FEB 2016

Valid up-to: 14 DEC 2017

  
Quality Registrar Systems



**MANAGING OFFICE ADDRESS:**  
Quality Registrar Systems  
P.O. Box :26826  
United Arab Emirates



Tel: +971-2-6714302  
Fax: +971-2-6741449  
[www.qrsyst.com](http://www.qrsyst.com)

**WORLD WIDE CERTIFICATION**

## **PRE – QUALIFICATION LIST OF PRESTIGIOUS PROJECTs IN UAE**

No.	PROJECT / CLIENT	CONSULTANT	MAIN CONTRACTOR	JOB DESCRIPTION
1.	Al Mushrif Palace	Morganti Int.	Ministry Of Presidential Affairs MOPA)	Gold Plating & Glass Works
2.	Presidential Flight	Client	Presidential Flight	Stainless Steel Handrails, Steel Doors, Aluminium Doors.
3.	Abu Dhabi Chamber of Commerce & Industry	Client	Kone middle East	4Nos. SS Lift Cladding
4.	Abu Dhabi Airports Company	Client	Abu Dhabi Airports Company (ADAC)	Stainless Steel Handrail at Terminal 3
5.	Al Mushrif Palace	Morganatic Intl.	Ministry Of Presidential Affairs MOPA)	Metal Enclosure on Heli-Pad
6.	Tabreed, Yas Island	Jacobs	Samsung Corporation	SS Lift Architraves
7.	University of Sharjah	Client	Kone Middle East	SS Lift Cladding
8.	Yas Mall	Aecom ME Ltd.	Six Construct / Fibrex	Stainless Steel Works
9.	Villas for Mr. Hamid Niyadi & Mr. Ali Al Afari.	Crang & Boak C. Engg.	Civil co.	MS Handrails – 6Villas
10.	Borouge 3 Project, Ruwais	Bechtel Corp. / Engineering Consultant International Limited.	Al Asab General Contracting Co.	MS Rod Settlement Guages
11.	Mubadala	Client	Al Reyami Interiors	Steel Structure Works
12.	National Bank Of Abu Dhabi	Client	Al Reyami Interiors	Stainless Steel Doors
13.	New York University Abu Dhabi	Client	Direct from Client	Mild Steel Glass Frames
14.	Mirfa 1 Seawater Intake & Outfall Project	Linde Engineering ME LLC.	Archirodon Construction Co. S.A.	Stainless Steel Drain Pit.
15.	3Villas for Mr. Khalifa Saif	Client	Darwish Bin Ahmed & Sons	Stainless Steel Handrails





No.	PROJECT / CLIENT	CONSULTANT	MAIN CONTRACTOR	JOB DESCRIPTION
16.	Shuweihat S2 Project	Fichtner	Hyodong Development Co. Ltd.	Wrought Iron Gates & Handrail
17.	Shuweihat S2 Project	Fichtner	Samsung Engineering & Construction	Steel Works
18.	Al Mushrif Palace	Morganti Intl.	Al Barq Construction	Gold Plating Works
19.	Palazzo Versace Hotel	Emirates Sunland Group (Architects)	KhanSaheb – Arab Tech	SS Doors, Handrails, MS Works
20.	UAE University	Client	Oger Abu Dhabi	Stainless Steel Fittings
21.	Villa For Mr. Nasser Eid Saif Al Qubaisi	Firas Consultant	Direct From Client	Stainless Steel Handrail
22.	Bldg. For Mussalam Salem Mohd Al-Ameri	National Engineering Consultants	Buildex	Steel Gates, OTS Ladder, MS Truss, Stainless Steel Cladding
23.	ADNOC	Client	Dhafir Technologies LLC	Aluminium Louvered Shed
24.	Danat Al Emarat Women & Children's Hospital	ECG Engineering Consultants Group.	Foyer Decor	Stainless Steel Counter Top
25.	Hollisters @ Mall of Emirates	Abercrombi & Fitch	Havelock AHI Interiors	Steel Gates & GI Cladding
26.	Emaar –Pavilion Sales Center	Bishop Design	KhanSaheb	Bronze Planter Boxes, SS Tables & MS Frames
27.	Al Dhafraa National School - Mussafah	Client	Osborne Cont.	Stainless Steel Handrails & Gates
28.	Abu Dhabi Grammar School	Architectural Engineering Consultants	Towers Technology Contracting Co.	Structural Steel Works, Sky Light & Stainless Steel Handrails.
29.	LLH Hospital	Society Technology Holding Consultant	Al Reyami Constructions	Steel Structures for 6Nos. Lift Shaft. Fire Rated Doors
30.	Al Aziz Mosque – Al Reem Island	Architectural & Planning Group	Arabtec Construction LLC	Steel Works & Sky Light



No.	PROJECT / CLIENT	CONSULTANT	MAIN CONTRACTOR	JOB DESCRIPTION
31.	Halliburton UAE	AECOM	KhanSaheb Hussain LLC	Steel Doors
32.	Al Ghurair Factory, DIP, Dubai	Client	Middle East Insulation LLC	Stainless Steel Handrails
33.	Presidential Flight	Client	Presidential Flight	MS Handrail Main Bldg, MS Handrail @ Parking Area
34.	Palazzo Versace Hotel	Emirates Sunland Group (Architects)	KhanSaheb – Arab Tech	MS Handrail
35.	CERT	Client	CERT – Higher Colleges of Tech.	GI BRACKETS – Taxi Meters
36.	Rihan Heights	WS Atkins	Silver Coast- Sunway Innopave Joint Venture	MS Handrail – G+27 5 Bldgs.
37.	Mr. Salem Taresh Salman Al Qamzi.	Ardent Consulting Office.	Al Bader Gen. Cont. est.	MS Handrail – G+12
38.	CAT - Sharjah	Direct from Client	Direct from Client	Door Automation
39.	Abu Dhabi Copper Factory	Direct from Client	Direct from Client	Aluminium Louvers
40.	Ministry of Interior	Direct from Client	Direct from Client	SS & Aluminium Security Boxes
41.	EMMAR	Bishop Design	Manser Saxon Dubai LLC	Aluminium Louver Enclosure
42.	ADNOC HQ	AECOM	ALEC	Aluminium Extruded Profiles
43.	Abu Dhabi Golf Club	Client	Client	Aluminium Louver for Enclosure
44.	Al Bateen Executive Airport	Dar Al Handasah Nazih Taleb & Partners	Taylor Woodrow - Fibrex	SS Handrail, Sliding Gate Automation, MS Gates, & Privacy Screen
45.	Special Task Force	Ministry of Interior	Civil Power Gen. Cont.	Automatic Glass Sliding Doors
46.	Dubai Festival City	Architect of Record & Design WME Consultants	ALEC	Stainless Steel & Plating Works





**METRO METAL FABRICATION**



**On** behalf of "Metro Metal Fabrication"  
We have great pleasure to avail this opportunity to  
Introduce ourselves to your Esteemed Organization.

'Metro Metal Fabrication' has been Established in 2002  
and we are proud of holding the label of excellence in the  
co ordination and acceleration of the business related in  
the sphere of Metal Works - Architectural metal works in  
Stainless Steel, Brass, Bronze, Aluminium etc.  
Mild Steel Works, Glass, Metal plating –  
Gold, Brass, Silver, Chrome, Antique etc.

With all our expertise & experience over the past years, we  
believe that we could continue to provide ideal quality  
solutions to most intricate design requirements & always  
look up at any situation as a challenge.  
There by we work in close co-ordination with most of the  
major Consultants & Contractors in these Regions.

We now remain looking forward to increasing  
our satisfied clientele data base with all your support.



#### **LIST OF IMPORTANT CLIENTS**

- ▶ MINISTRY OF PRESEDENTIAL AFFAIRS (MOPA)
- ▶ PRESEDENTIAL FLIGHT
- ▶ ABU DHABI INTERNATIONAL AIRPORT SERVICES (ADAC)
- ▶ ABU DHABI CHAMBER OF COMMERCE & INDUSTRY
- ▶ MINISTRY OF INTERIOR (MOI)
- ▶ AL REYAMI GROUP
- ▶ ALI & SONS INTERIORS
- ▶ KHANSAHEB INTERIORS
- ▶ BAITUTI INTERIORS
- ▶ KONE MIDDLE EAST
- ▶ SAMSUNG CORPORATION
- ▶ FOUNDATION PROPERTIES
- ▶ HAVELOCK AHI INTERIORS
- ▶ ARCHIDONE CONSTRUCTION ETC...



METRO METAL FABRICATION

*We work in the area of:*

► Staircase & Handrails



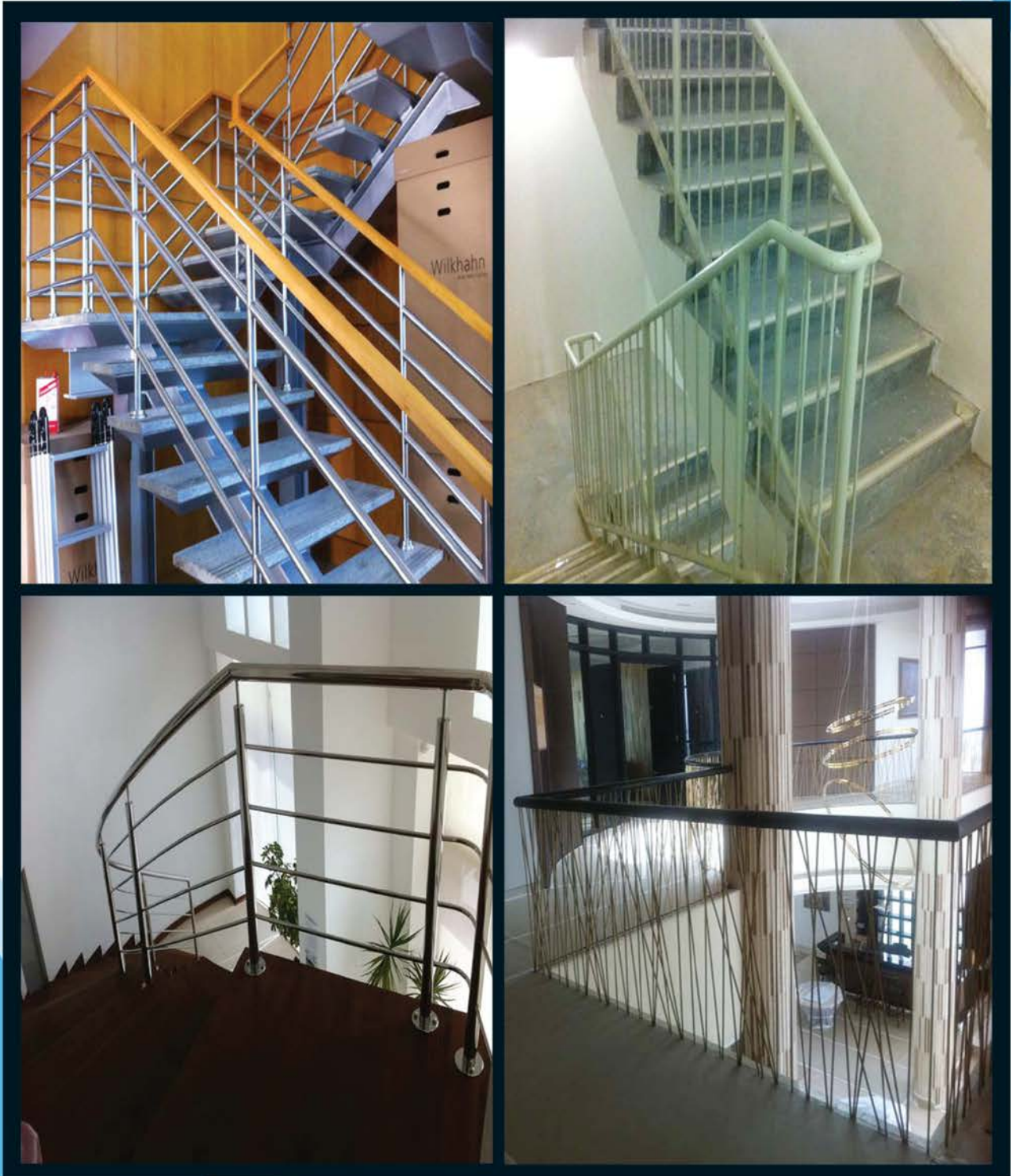




METRO METAL FABRICATION

*We work in the area of:*

► Staircase & Handrails







**METRO METAL FABRICATION**

*We work in the area of:*

► Staircase & Handrails







METRO METAL FABRICATION

*We work in the area of:*

► Staircase & Handrails





METRO METAL FABRICATION

*We work in the area of:*

► Staircase & Handrails







METRO METAL FABRICATION

*We work in the area of:*

► Mild Steel – Structure Works

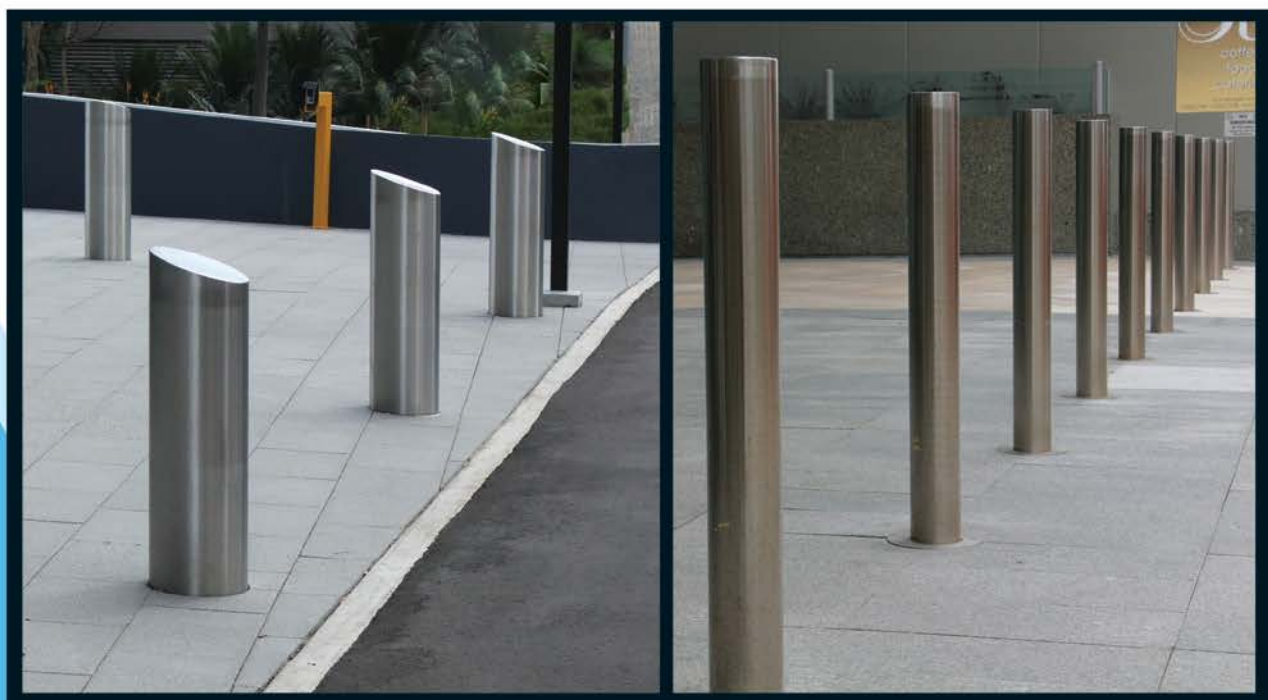




METRO METAL FABRICATION

*We work in the area of:*

► Bollards







METRO METAL FABRICATION

*We work in the area of:*

► Column, Fascia & Beam Cladding

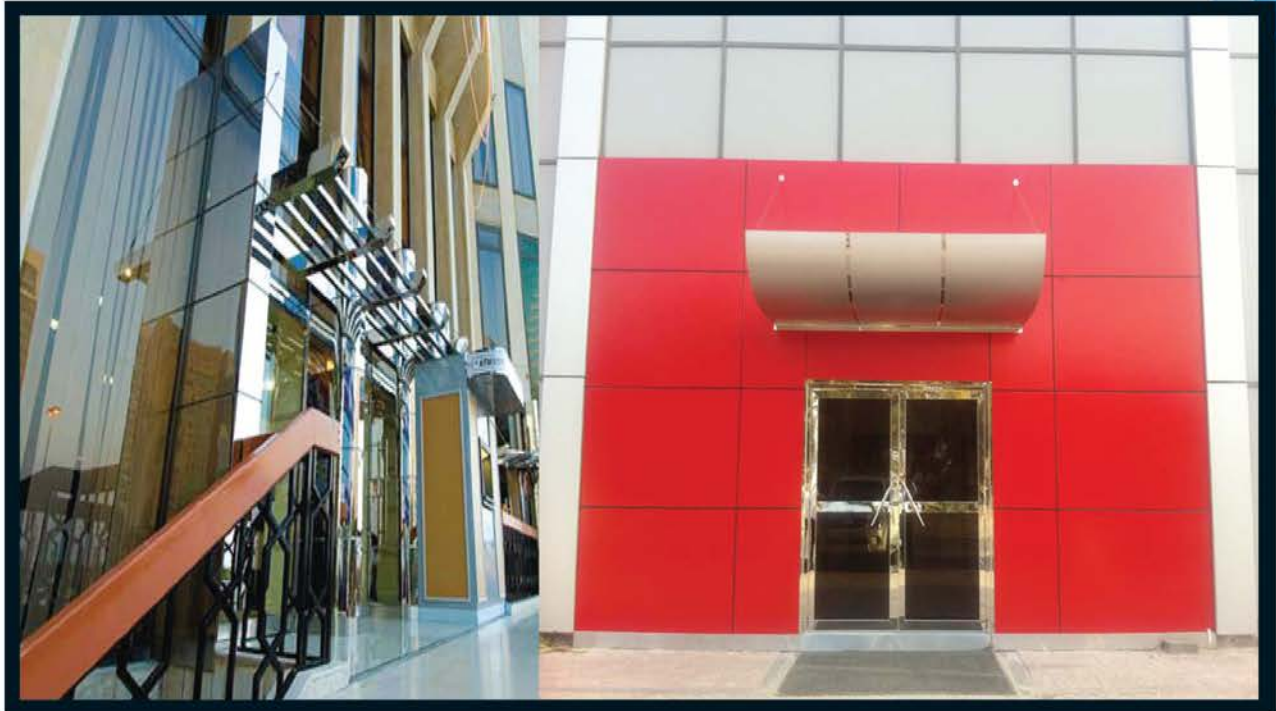




METRO METAL FABRICATION

*We work in the area of:*

► Entrance Canopies







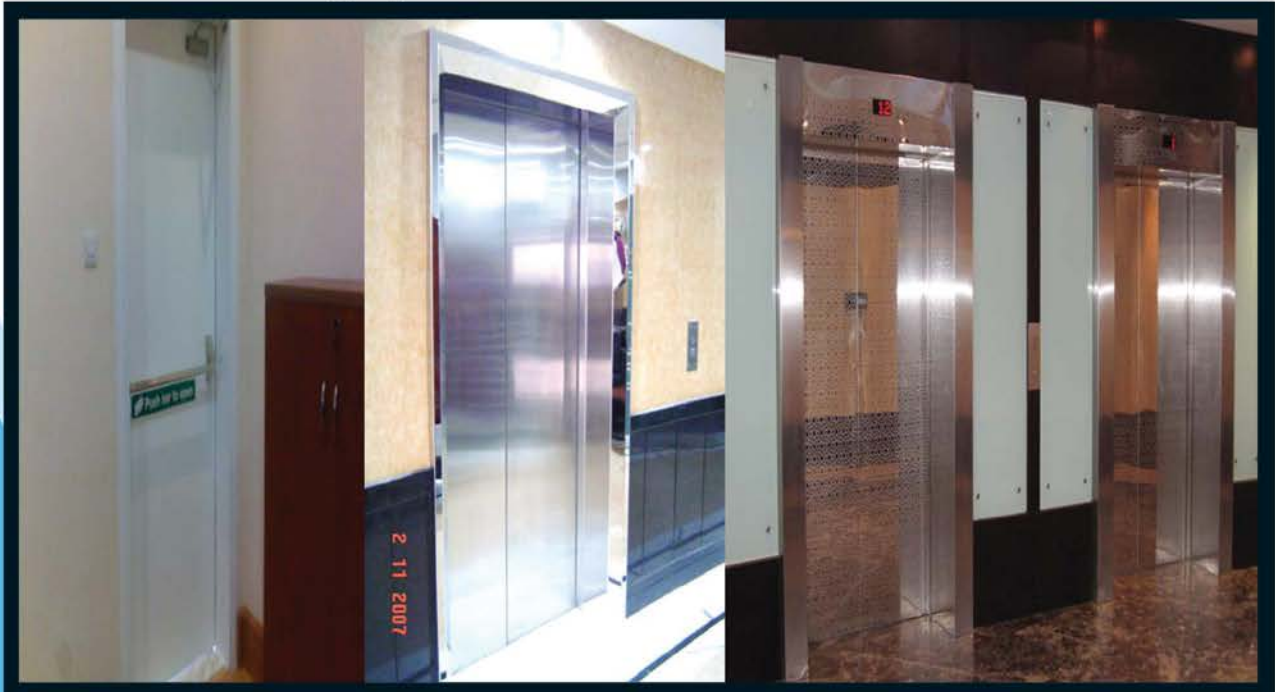
**METRO METAL FABRICATION**

*We work in the area of:*

► Counter Cladding



► Door & Ironmongery





**METRO METAL FABRICATION**

*We work in the area of:*

► Cladding



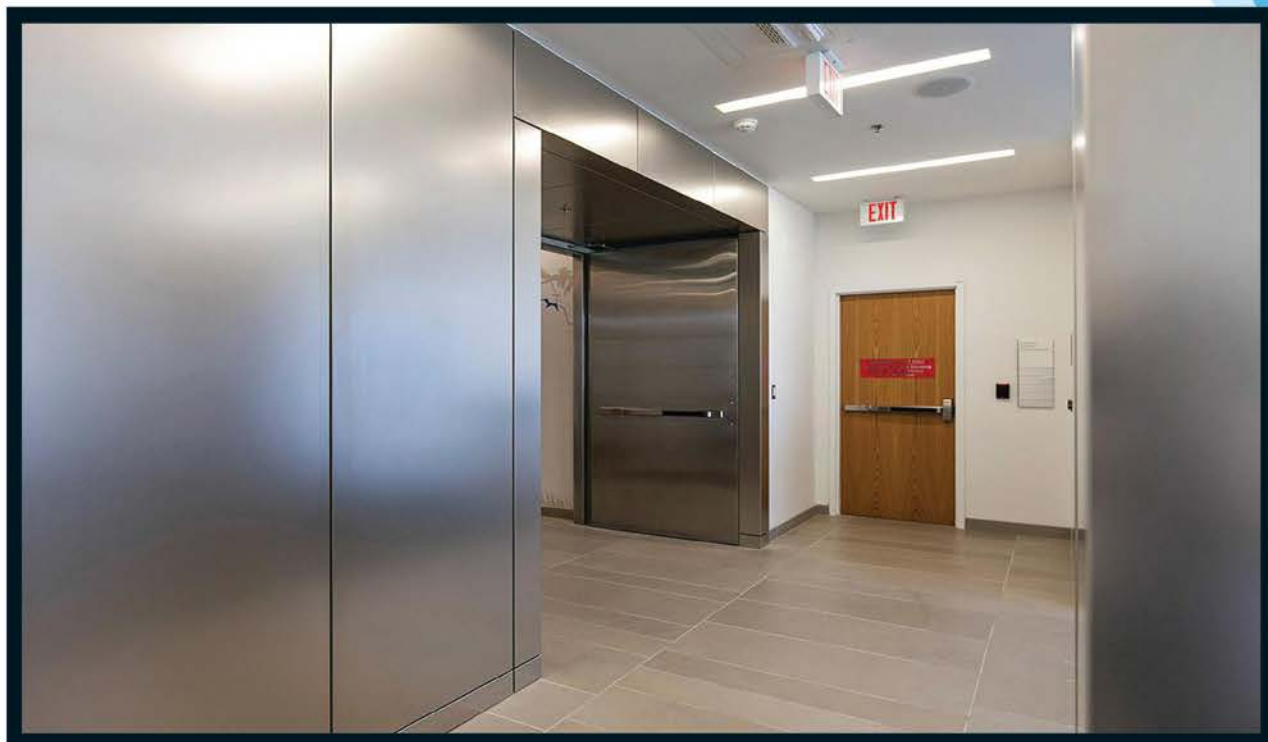




METRO METAL FABRICATION

*We work in the area of:*

► Cladding





**METRO METAL FABRICATION**

*We work in the area of:*

► **Decorative Grills**



► **Gates, Fencing**







**METRO METAL FABRICATION**

*We work in the area of:*

► Lift Interiors





METRO METAL FABRICATION

*We work in the area of:*

► Shop Interiors



► Metal Furniture / Kitchen Wares





*We work in the area of:*

► **Advertisement Signage**

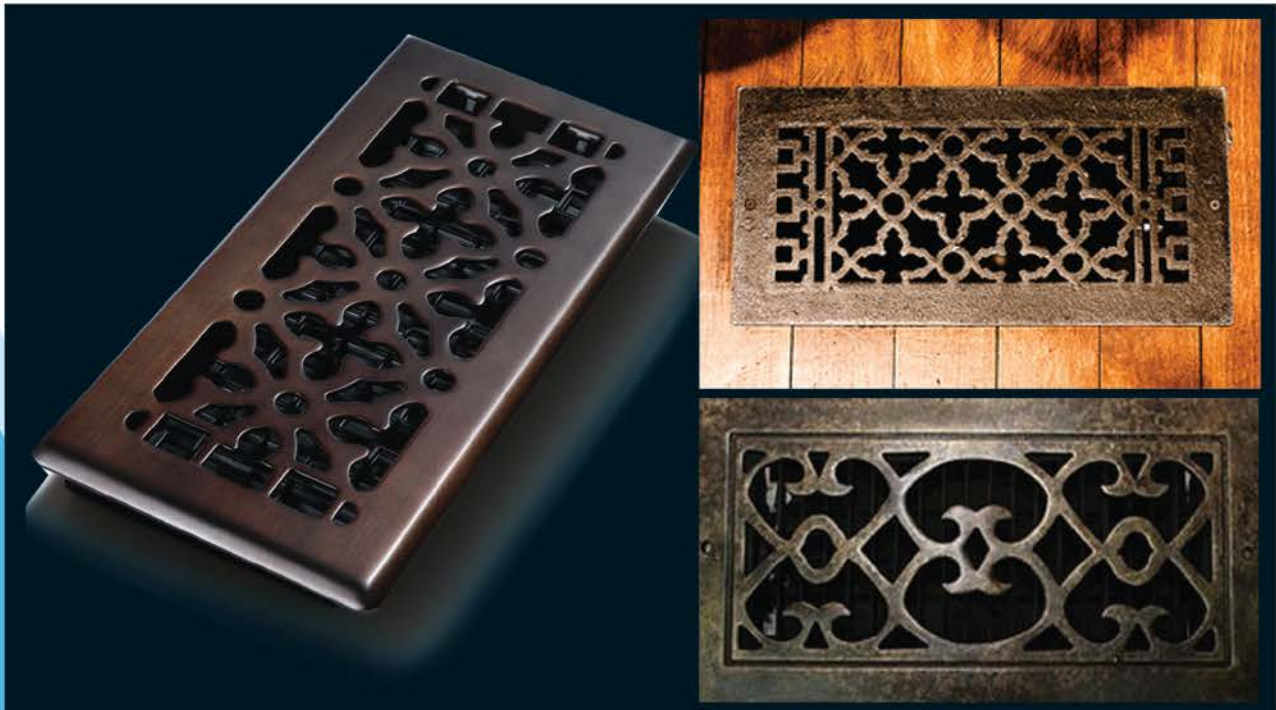




METRO METAL FABRICATION

*We work in the area of:*

- Stainless Steel A/c Grills / Aluminium Decorative Grills







**METRO METAL FABRICATION**

*We work in the area of:*

► **Aluminium & Glass works**





METRO METAL FABRICATION

*We work in the area of:*

► Gold Plating



► Accessories, Décor Items







METRO METAL FABRICATION

*We work in the area of:*

► Enclosures





METRO METAL FABRICATION

*We work in the area of:*



► Decorative Metal Ceilings







METRO METAL FABRICATION

*We work in the area of:*

► Stainless Steel Frames





**METRO METAL FABRICATION**

*We work in the area of:*

► **Stainless Steel Frames**







**METRO METAL FABRICATION**

*We work in the area of:*

► **Stainless Steel Ramp Rail**

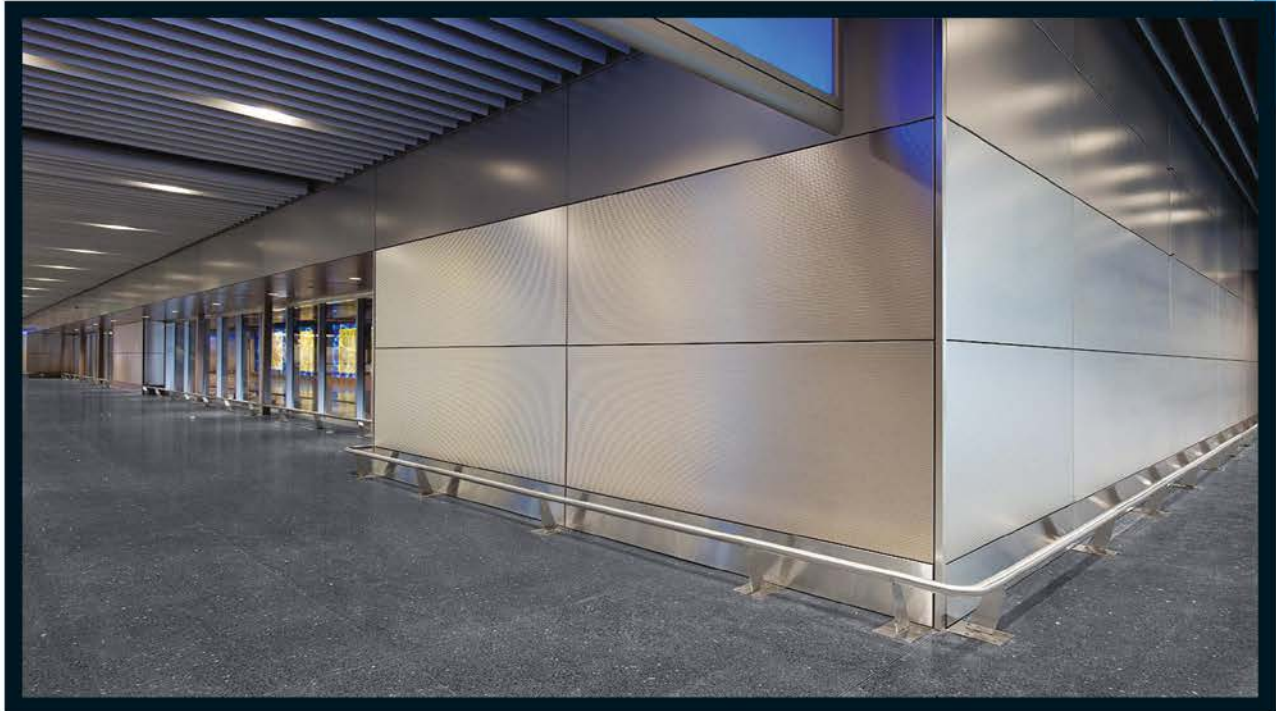




METRO METAL FABRICATION

*We work in the area of:*

► Stainless Steel Foot Rail





*We work in the area of:*

► Logos





# ميترو لخراطة المعادن METRO METAL FABRICATION



Architectural Metal Works  
Aluminium & Glass  
Steel Structural Works  
Plating - Gold, Antique etc.  
Gates & Doors Automation

أعمال إنشائية معدنية  
الوئيدوم و زجاج  
الفولاذ الهيكلية الأشغال  
بلا تينج - الذهب و قطع التريية الخ  
بوابات و أبواب تحكم عن بعد

متخصصون في تصنيع الفولاذ الغير قابل للصدأ  
Specialised in Stainless Steel Fabrication

P.O.Box # 111984, Abu Dhabi, Musaffah - 37  
United Arab Emirates  
Tel: +971 2 5516711, Fax: +971 2 5516722  
Mob: +971 509642526, +971 552219269, +971 507820869  
E-mail: metrofab@eim.ae, www: metrometalme.com