

Shams Outage 2014 - We Restart!

As we are now restarting the plant, we have now products (HTF, gas, steam...) in the pipes and it is more critical than ever to follow the Golden Rules, and our normal operating procedures, especially:

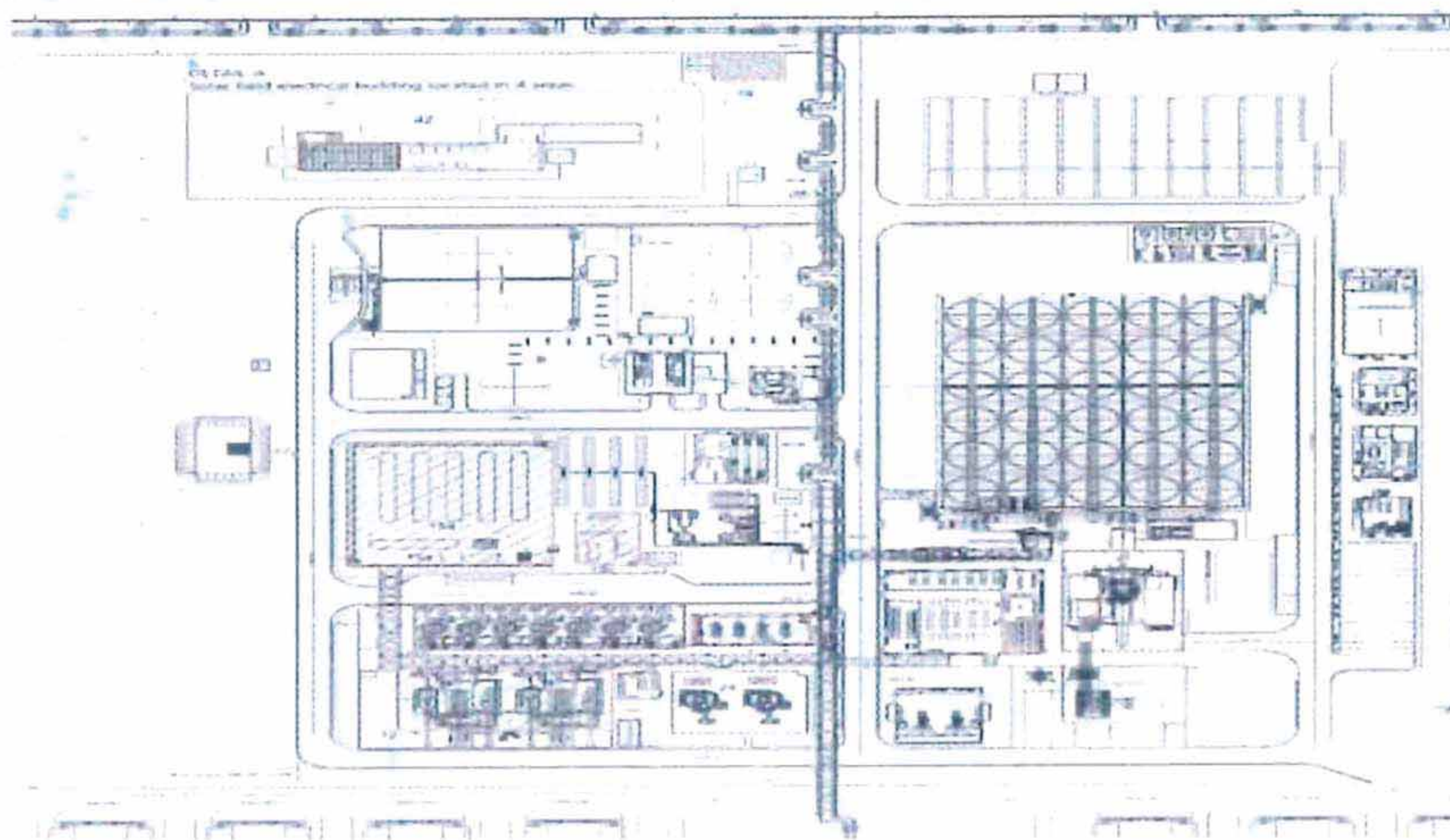
1. When breaking containment: decoupling a hose, removing a blind tag, draining or venting: **ALWAYS USE A FULL FACE HTF MASK and CHEMICAL COVERALLS AND GLOVES.**



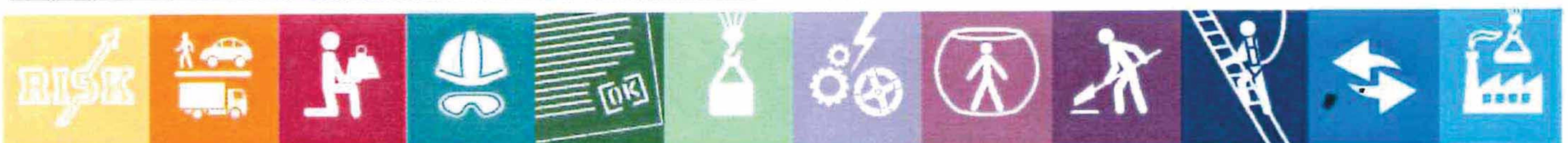
We suffered several Near Misses and accidents with HTF, luckily mostly when cold, but it means correct PPE is absolutely a MUST.

- Normal coveralls and gloves are Not Enough protection.
- Full visor is Not Enough as a splash can come from anywhere. Use a Full Face HTF mask systematically
- For all activities, always when in Operations area, always wear and make wear safety glasses

2. ATEX (explosive areas) are now back. No mobile phone allowed in Operations area.



3. Any use of liquid chemical: always put retention and identify the product.



Safety at Work

Shams Golden Rules: Golden Rules Number 2: Traffic

Traffic is a high risk at Shams, both onsite with sometimes pedestrians walking on the street, flow of different vehicles (cars, cleaning trucks, forklifts, cranes...) and outside (long driving distances to Abu Dhabi and Dubai, fog or sandstorm situations, driving at night after days work...).

During the outage we had suffered several minor material damages when maneuvering, that demonstrate that the risk is there. Now that the outage reaches its end, we are more tired than usual and must make sure that we don't take the road when tired.

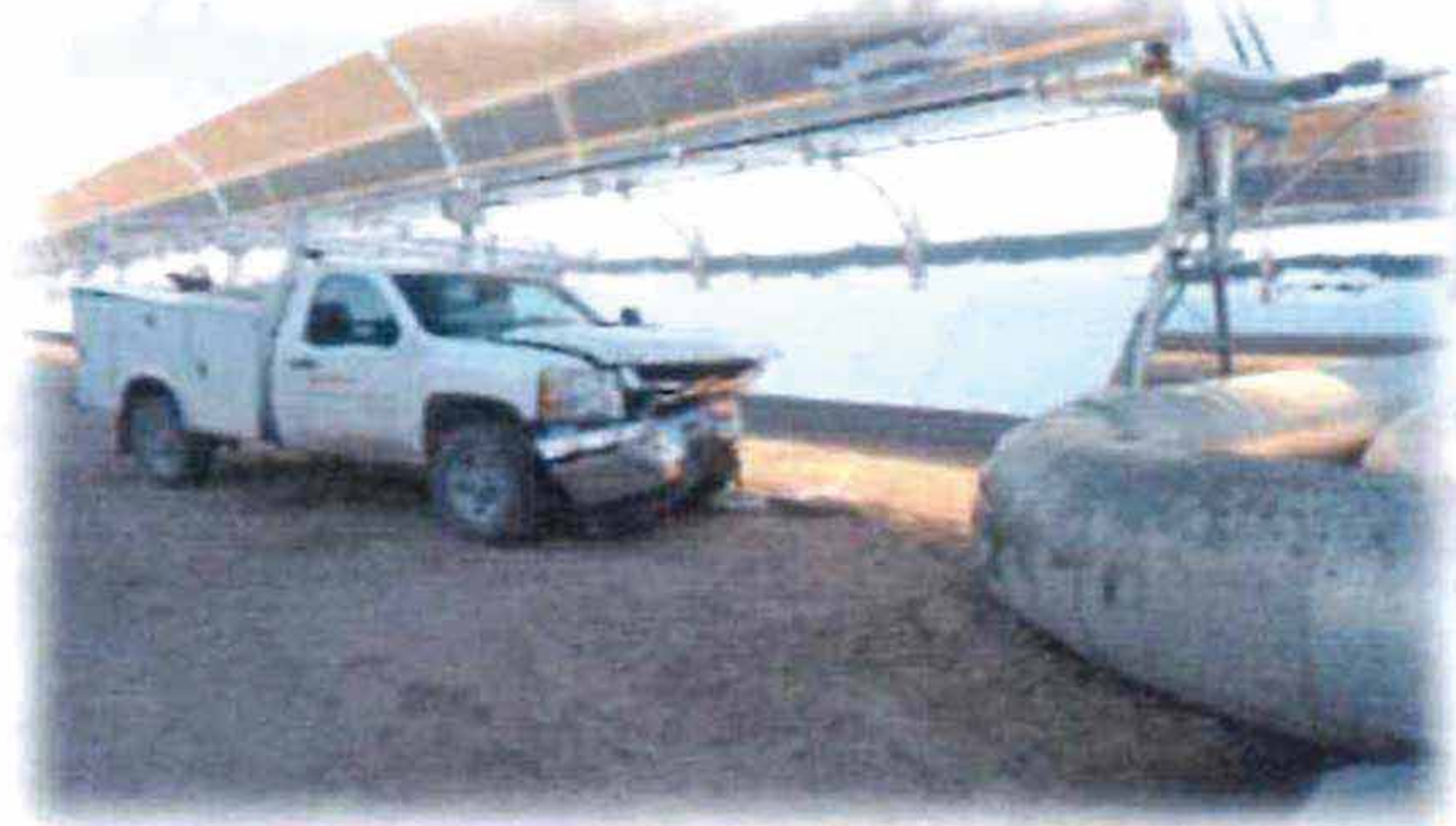
Remember, those events have happened at Shams or other Power plant: when driving, put safety first, use carpool, do not use mobile phone, put on your seatbelt, onsite and offsite.



- Do not exceed the speed limit.
- Buckle your seatbelt.
- Do not use cell phones while driving.
- Do not drive, cycle or walk outside the authorized paths.



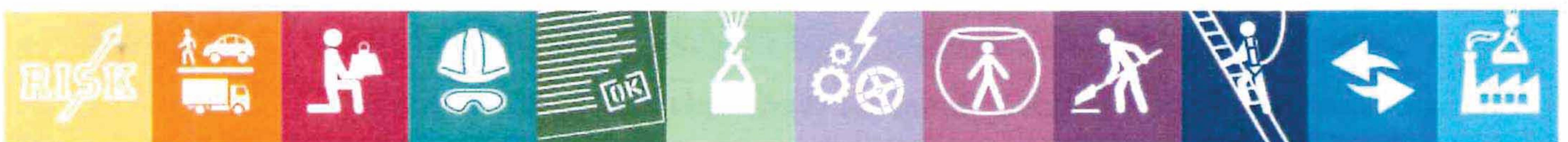
SA CSP Plant



US CSP Plant



Shams 2013



Editorial

Dear Teams,

It was a challenging outage for all of us to work safely with many hot works activities, lifting, scaffolding, etc. After 3 weeks of dedicated and highly professional efforts now we are starting up the plant. The goals set for this outage have been achieved with the team work and with professionalism of all teams on site. Startup activity are ongoing as per scheduled date and already HTF circulating in the Power Block with steam blowing which is a very positive sign that we all are again in day to day start up regime.



For me this outage specifically has been more challenging after acquiring the pivotal position in operation department and things are moving as per my expectations. I congratulate all the teams to finish this outage with our core objectives, high standard of safety and fulfillment of all KPI's. I would encourage all of you after successfully concluding this Shams first outage to exhibit the same motivation and zeal for the forthcoming operation year.

My best wishes for future endeavors for Shams team members.

Your Sincerely,

Salem Al Mansoori
Operation Manager

Outage HSE Challenge Fourth week winners:

For Shams:

- Jojo Joshy
- Kannan KB
- Mohamed Rhomdani

For Contractors:

- Abhilash Johny (Adyard)
- Srinivas (Cleanco)
- Haroon (Al Eiman)

Contractor of the week:

- UTE



We will draw the winners of the iPhones on Wednesday night. Keep posted!

Subcontractor's Insight:



Dear all,

Al Eiman Company is ISO certified and possess quality, environment & safety management system.

The establishment is engaged in steel fabrication of structure, piping and installation plus scaffolding & industrial painting work. Extraordinary precision is guaranteed by CNC water jet and also in house CNC plasma cutting.

Al Eiman has dedicated & well qualified engineers and task force of highly technicians.

We are proud to be partner during 2014 shutdown and successfully contributed our expertise in completing the task within time frame, proud to be selected for safety award at 3rd week of Outage.

Our major jobs during shutdown were:

- Structure fabrication, assembly and installation of height 21 mtr. x 3 mtr. for Turbine unit silencer;
- booster heater, internal blasting & mechanical works;
- piping work in Deaerator, Turbine Silencer and PSV;
- P91 welding work for pre-warming line & HTF Headers of Booster heaters-1 & 2
- civil foundation & electrical work.

Al Eiman thanks the management of Shams & UTE for their confidence and selection of our company during Sham's OUTAGE 2014.

We once again thank Shams & UTE management for their continuous support & subsequently contribution in company growth.

Thank You,

Sher Shah
CEO, Al Eiman Group



Age no barrier for Entrepreneurship

Business Pulse

14 May, 2013

When entrepreneurship is spoken about the general perception is of young adventurers. But, Sher Shah Nabi, general manager, Al Eiman Black Smith Workshop is someone who has beliefs in going against the grain. He decided to follow his dream at the age of 53 when most people decide to hang up their boots.

During his tenure with an oil and gas construction company from May 1981 up to September 2007, Shah worked in different departments as estimation, planning, procurement, site engineer, site manager, project manager, operation manager and finally rising to the position of general manager. "My rationale was that different trade skills can only be acquired by following the motto, - If he can do it, I can do it." After a span of 27 years with the sole determination to succeed, Shah established Al Eiman Black Smith Workshop in January 2008. "Even during my days as a salaried employee, my father's disappointment of not being a successful entrepreneur lingered in my mind and ultimately I made up my mind to take the plunge. With experience in the same field for nearly 33 years and handling every aspect of the work from the factory floor to the administration, I was more than prepared to face the risks involved."

In a very short span of time Al Eiman has successfully executed many projects and is also registered with Supreme Petroleum Council for Oilfields. The company's business activities are: fabrication of piping, structure in mild steel, stainless steel & aluminum; CNC water & CNC plasma cutting; scaffolding work and industrial painting.

If given a choice, would he follow the same path? Shah does not hesitate. "I would gladly repeat this experience if my body can support the workings of the mind," says this tireless entrepreneur who does not find anything different from his previous circumstances with regards to the demands of the job. "Be it dedication, discipline or commitment, the abiding principles are the same as an entrepreneur or an employee, with the exception of monetary gains," he asserts.

These very principles charted the road to success for Al Eiman and Shah. "When I started with the business, a lot of the customers were ready to give me projects. Their trust was based on my capabilities and dedication to deliver the goods. Even large competitors wished me well," says Shah. "I have always viewed competition as healthy. It is important to be comfortable and confident of one's ability as well as support one another. I believe that this world is very big and can accommodate all of us," he added.

A self-made man Shah believes that true leadership is about leading from the front and working on the field. "As an entrepreneur or leader you should be capable of handling any aspect of the business and work hand-in-hand with your team. Your enterprise should motivate others. Also, it is important to recognize and reward talent. Hard work is the key along with back-up plans in the event of a crisis. Honesty, dedication, discipline and commitment bears fruits in long run," he says.

Shah believes that the right choice of business is critical. "As an entrepreneur your knowledge and input is vital in the early stages when funds are limited and there is minimal support from banks or financial institutions," he says. According to Shah, an entrepreneur's true mettle is revealed if he achieves a return of investment within the first three years.

Link to the Web Page: <http://businesspulse.ae/Home/story/watch/VID20130514100800>

الايمن للخدمات الصناعية



AL EIMAN INDUSTRIAL SERVICES

Fabrication, Scaffolding & Painting



Engineering & Fabrication

CNC Water Jet Cutting

CNC Plasma Cutting

Sand Blasting, Painting &
Underground Pipe Wrapping

Scaffolding Works

Tel : 00971-2-5544182/5540018 Fax : 00971-2-5545199,

P.O.Box : 8612, Abu Dhabi - U.A.E.

E-mail : aleiman@eim.ae

Web : www.aleiman.ae

هاتف : ٠٠٩٧١-٢-٥٥٤٤١٨٢ / ٥٥٤٠٠١٨ ، فاكس : ٠٠٩٧١-٢-٥٥٤٥١٩٩

ص.ب : ٨٦١٢ ، أبوظبي ، ا.ع.م

البريد الالكتروني : aleiman@eim.ae

موقع بريد الالكتروني : www.aleiman.ae

AL EIMAN GROUP OF COMPANIES

AL EIMAN BLACK SMITH WORKSHOP
PLOT 179, SECTOR 11,
MUSSAFAH
ABUDHABI - UAE
TEL:02 5544182/5540018
FAX:025545199
Email: aleiman@eim.ae
Web:www.aleiman.ae

INDFAC COMPANY
PLOT NO.A 144/4
M.I.D.C. TTC INDUSTRIAL AREA
KHAIRANE
NEW MUMBAI - 400705, INDIA
TEL:0091-27631380, FAX:0091-2763182
Email :info@indfac.com
Web:www.indfac.com



M/S. Al Eiman Blacksmith Workshop., is an 'Establishment' registered on 27th Feb, 2001 with Abu Dhabi Municipality, under the license No. 1033211 issued by Department of Planning & Economy, Abu Dhabi, United Arab Emirates to the partners.

The company M/s. Al Eiman Black Smith Workshop, is ISO certified and possesses Quality Management System conforming to ISO 9001:2008 standard., ISO 14001-2004 for Environment Management System & OHSAS 18001-2007 for Safety Management System.

The Establishment is engaged in Steel Fabrication and Installation of Pipe & Structure, Sand Blasting and Painting, Scaffolding and principal activities as below:

We are registered with Supreme Petroleum Council for Oilfield Works and registered with Borouge, Municipality Abu Dhabi and done work with contractor for project of Zadco, Takreer, Gasco, Emirates Steel Industries, Masdar etc.

Our Head Office is located at the Abu Dhabi Mussafah Industrial Area and Storage yard at Al Faya Industrial Zone.

ENGINEERING AND FABRICATION :

- * Piping and Structure Fabrication with Stainless Steel , Mild Steel & Aluminum materials
- * Fabricating Skid & mounting equipments , Staircase, Platforms, Tanks
- * Structural Supports, Steel Shed, Doors, Fence,
- * Handrails, Cat Ladders and Cage Ladders
- * Insert Plates, Angles, Channels, Beams, Chequered Plate and Grating.

Al Eiman has dedicated Personnel, including well qualified engineers and a task force of skilled and highly experienced technicians - a key element for project success and complete customer satisfaction.

The growth achieved by Al Eiman can be totally attributed to relationships built on the trust that has been earned by consistently achieving the desired results at highly competitive prices.



CNC WATER JET CUTTING :

Extraordinary precision is guaranteed by the state of the art Water jet cutting machine. The machine is operated by professionally trained engineers, dedicated to achieving the most accurate profile cutting of even the most intricate drawing.

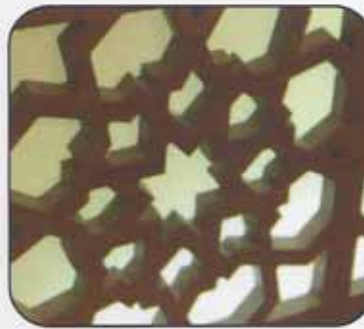
The Machine is calibrated to allow Al Eiman team to accommodate different materials **up to 3m x 2m in sheet size of variable thickness, kindly view the table below:**

All the materials can be cut with the extreme Precision of 0.05mm tolerance without causing disturbance to the original properties of the materials.

Advantages over conventional cutting procedures:

- ✓ Highest cutting accuracy
- ✓ No thermal stress
- ✓ Cutting of non-metal materials possible
- ✓ Environmentally conscious process

Metal Material	Mild Steel	Stainless Steel	Aluminium	Brass	Copper	Titanium
Max. Thickness	150 mm	150 mm	200 mm	200 mm	200 mm	300 mm
Other Material	Marble	Granite	Glass (Un-tempered)	Rubber		
Max. Thickness	120 mm	120 mm	150 mm	200 mm		



CNC PLASMA CUTTING :

Plasma torch fire an electrical arc to transform inert gas into plasma. This plasma reaches extremely elevated temperature and is applied to the workpiece at high speed to melt away unwanted material. The process is often used on electrically conductive metals that require a precise cut width and minimal preparation time. To accommodate mild steel sheet of maximum size 6m x 2.7m and thickness of 30mm can be cut on this machine.

Advantages High Definition CNC Plasma Cutting :

- ✓ High speed, Cost effective cutting & High production rate.
- ✓ Any complicated profiles can be cut as per the AutoCAD drawings.



SCAFFOLDING WORKS:

Scaffolding Site Erection & Renting of Materials:
Tubes, Fittings and Boards in compliance with BS 1139.



BLASTING & PAINTING:

Due to high demand from our customers, we have set up an facility of carrying out blasting and painting jobs. We also undertake job of hot dip galvanizing as per ASTM A 123, Powder Coating jobs & passivation of Stainless steel works. All compressors are Zone II certified, and equipment is verified by 3rd party certificates.

