



DELIVERING  
EXCELLENCE



# CONTENTS

<b>ABOUT OPAR</b>	03
<b>VISION &amp; MISSION</b>	04
<b>SERVICE SECTORS</b>	05
<b>TRADING</b>	06
UPVC HIGH PRESSURE PIPES, VALVES & PIPE FITTINGS	08
UPVC SWR DRAINAGE, PIPES & PIPE FITTINGS	10
SOUNDPROOF (ACOUSTIC) PIPES & PIPE FITTINGS	11
CPVC PIPES, VALVES & PIPE FITTINGS	12
PPR PIPES, VALVES & PIPES FITTINGS	13
HDPE PIPES & PIPES FITTINGS	14
WATERPROOFING, ADHESIVES, SEALANTS, FOAMS, MEMBRANES	15
IRRIGATION PRODUCTS	16
SWIMMING POOL PRODUCTS	17
SANITARY MATERIALS	18
GI & MI – PIPES & PIPE FITTINGS	19
<b>ENGINEERING</b>	20
TRANSFER PUMPS	22
BOOSTER PUMPS (PRESSURE BOOSTING)	23
AGRICULTURE AND IRRIGATION PUMPS	24
CIRCULATION & CHILLED WATER PUMPS (HOT / COLD)	25
SUBMERSIBLE PUMP	26
PRESSURE KITS	27
PRESSURE TANKS	28
CONTROL PANELS (PLC, HMI, VFD, STAR DELTA, DOL)	30
MANIFOLDS GI/MS/SS	31
<b>FABRICATION</b>	32
<b>OUR PARTNERS</b>	36





## OPAR

OPAR one of the leading Importers, Re-Exporters and Suppliers of PVC products for the applications of Potable water and Drainage systems for Civil Engineering, Building constructions, Infrastructure, Irrigation, Landscaping, Water Treatment, and Swimming Pools etc.

OPAR Established in 2003, we are based in Sharjah – UAE, and with a professional team of Engineering, Marketing, Sales & Service.

Opar has tied up with many internationally recognized brands from different countries like UK, US, Balkan Peninsula, Italy, Germany, Austria and the Middle East, which are well known for their reliability and durability.

Opar has established its name, as one of the most reliable suppliers and distributors for more than 6500 products. Our well established Trading & Engineering division playing a significant role in the development of Gulf & Middle East and North Africa (MENA) region.





## VISION & MISSION

Our main focus is on exploring innovative ideas by taking different initiatives and to be the leaders in Pipes manufacturing and support industries for all sectors across the middle east, while maintaining continual growth. We strive to reach new horizons in the field of manufacturing and trading plastics and uncover new market opportunities.

## SERVICE SECTORS

DOMESTIC  
INDUSTRIAL  
COMMERCIAL  
MUNICIPAL

# TRADING

QUALITY DESIGN & TECHNOLOGY





# UPVC HIGH PRESSURE PIPES, VALVES & PIPE FITTINGS



## PIPES AND FITTINGS ARE MANUFACTURED AS PER THE FOLLOWING STANDARDS

uPVC is highly suitable for both interior and exterior applications as well as for buried pipelines. uPVC is light and clean to handle and can be easily jointed. Pipes are exclusively available in full range of nominal diameters from 3/8” for household supply pipe to nominal diameters 24” truck main. ½ inch to 12 inch is available in stock with Kitemark Certification.

The PVC Watermain is also available in metric sizes from 20mm to 400mm and complies with DIN 8062, EN 1452-1 and ISO 161-1.

## PIPE STANDARDS

ASTM D 1785 – Schedule 80/40 PVC Piping Systems  
BS EN 1452-2:2000 (BS 3505:1986)  
ISO 161-1  
DIN 8062  
Nominal Size: 1/4 (inch) – 24  
Nominal Size: 20 (mm) – 315  
Available Length Size: 6 meters.

## FITTING & VALVES STANDARDS

ASTM D 1785 – Schedule 80/40 PVC Piping Systems  
BS EN 1452-2:2000 (BS 3505:1986)  
ISO 161-1  
DIN 8062  
Nominal Size: 1/4 (inch) – 24  
Nominal Size: 20 (mm) – 315



# UPVC SWR DRAINAGE, PIPES & PIPE FITTINGS

## UPVC PIPES AND FITTINGS ARE MANUFACTURED AS PER THE FOLLOWING STANDARDS

Above Ground: BS EN 1329-1: 2000  
This standard supersedes BS 4514: 1993 and BS 5255: 1989. Below Ground: BS EN 1401-1: 1998  
This standard supersedes BS 4660: 1989 and BS 5481.

## KG PVC-U

**Material:** Polyvinyl chloride plasticized stabilized with calcium-zinc – RAL 8023 orange/brown.  
Dimensions: DN 110 up to DN 500.  
Working pressure: non pressure gravity system with push fit connection.

**Applications:** PVC-U pipes and fittings for underground drainage in ring stiffness SN4 and solid wall pipes in Sn8.

## THE PIPES ARE SUPPLIED AS FOLLOWS

1 1/4" (36mm), 1 1/2" (43mm) & 2" (56mm) pipes are supplied with plain ends.  
3" (82mm), 4" (110mm), 6" (160mm) & 8" (200mm) pipes are supplied with solvent cement socket or rubber ring socket.

**Advantages:** High degree of strength, elastic response, long-term stability, chemical and abrasion resistance, life time up to 100 years, quick installation, highly costs effective, ecological stabilizer calcium-zinc – better for health and safety reason compared to other solutions like lead, chemical resistance from pH2 up to pH12.



# SOUNDPROOF (ACOUSTIC) PIPES & PIPE FITTINGS

Peštan silent piping system is a promoted version of Peštan HTPP home sewage system and it is specially designed for installation in places where sound insulation is taken into account. Installed with special pipe clamps (with profiled rubber ring) provides reduction in noise an acoustic vibrations up to level of 12 dB\*. The latest technology of three-layer extrusion pipe and materials modified with mineral additives have raised disposal of waste water systems within the building structure on a higher level.

Production program Peštan S LINE pipes for the installation of sewage systems inside buildings includes pipes produced from high quality polypropylene-copolymer (PP-C) hardened mineral additives, in technology, three-layer composite pipes according to the requirements of EN 1451, in diameters from Ø32 to Ø160.

## REDUCTION OF NOISE

There are two types of noise that vary widely in the medium through which is transmitted: The noise of airborne (Airborn noise) The noise that is transmitted through the walls of buildings (Structureborne noise) Both types of noise can be reduced to optimal levels in different ways. The noise of airborne (Airborn noise) is reduced so that the pipes and fittings produced by special technology of special materials (materials reinforced-modified mineral additives) or by optimizing the use of fittings in places change of direction of the pipeline. The noise that is transmitted through the walls of buildings (Structureborne noise) is reduced so that the pipeline is installed properly with good quality clamps with molded rubber (fixed points) and the optimum tightening clamp (slip point).

To determine the effectiveness of the sound insulation, the system of pipes and fittings for house sewage installations, Peštan S LINE system was sent for testing at the renowned German Fraunhofer Institute for Building Physics (IBP) in Stuttgart.

The tests were carried out according to EN 14366 (Laboratory measurement of noise from waste water installations) and DIN 4109 (Sound insulation in buildings – Requirements and verifications) and Peštan S LINE system has shown excellent results with the measured noise level of just 12dB (A)



## RESISTANCE TO ELEVATED TEMPERATURE

Complete program Peštan S LINE pipes and fittings for sewerage inside buildings resistant to constant heat load of + 60 ° C, as well as shortterm thermal load of + 95 ° C.

## PHYSICAL PROPERTIES OF MATERIALS

The density of 9 g / cm<sup>3</sup>, according to ISO 1183  
Tensile strength of 28 MPa according to ISO 527  
Modulus of stretching 1,300 MPa according to ISO 527  
Impact strength according to Sharpy 70 kJ / m<sup>2</sup>, according to ISO 179



# CPVC PIPES, VALVES & PIPE FITTINGS

## CPVC – PIPES, FITTINGS & VALVES

Thermoplastic CPVC (Chlorinated Polyvinyl Chloride) is light, flexible, durable and provides exceptional corrosion resistance. Due to these and other properties of this high quality thermoplastic, substantial savings can be realised during installation and ongoing service life.

CPVC can handle temperatures up to 210°F (90°C).

CPVC thermoplastic is highly resistant to acids, alkalis, alcohols and many other corrosive materials. CPVC is ideal for process piping as well as most service pipe applications.

## APPLICATIONS

Versatility and Dependability CPVC fittings, pipes and valves have been found to be suitable for more than 50% of the corrosive and non-corrosive applications within the chemical process industries. The establishment of strong industry standards and specifications, plus third party certifications through NSF, provides the specifying engineer, contractor and end user with a tested and accepted piping system to solve their corrosion problems.

**Standard:** ANSI SCH80/SCH40 , DIN  
**Color:** Light Grey, Crea



# PPR PIPES, VALVES & PIPES FITTINGS

## APPLICATIONS

Systems for sanitary installations, hot and cold water, heating plants, systems for use of storm water, apparatus and plant construction, floor heating, greenhouses, shipbuilding, water treatment, compressed air lines, cooling towers and many other applications.

- Exceptional corrosion & erosion resistance
- High chemical resistance, Low Thermal Conductivity, Anti -Fungal & Non-toxic
- Leak -proof & airtight homogeneous joints
- Negligible head loss, Minimum Pressure loss & Higher flow Rate
- Inherited characteristic of high impact strength, Wide Temperature range: -4C to +95C low thermal loss
- Trouble -free installation process & light in weight long Service life, highly economical
- Superior Impact, Fracture Resistance & Minimum Crack Transmission
- PPR being an Eco-Friendly product does not catch fire straight forwardly, indeed in case of fire it doesn't produce toxic gases.

**Advantages:** The excellent corrosion resistance guarantees a long-lasting service life of installation lines in the building services without any fear of some line damage. Higher pressure resistance at higher temperatures.

**Material:** PP-R Polypropylene-Random Copolymerized – RAL 6017 green





# HDPE PIPES & PIPES FITTINGS

## HDPE – 100

Raw Material: HDPE 100 polyethylene, classified according to the minimum required strength (MRS); color black. The material fulfills the requirements of EN 1555 for gas supply as well as EN 12201 for drinking water supply. Baenninger PE 100 fittings are registered within DVGW, the German Technical and Scientific Association for Gas and Water for application in the areas of gas and water supply.

## WORKING PRESSURE

Raw Material: HDPE 100 polyethylene, classified according to the minimum required strength (MRS); color black. The material fulfills the requirements of EN 1555 for gas supply as well as EN 12201 for drinking water supply. Baenninger PE 100 fittings are registered within DVGW, the German Technical and Scientific Association for Gas and Water for application in the areas of gas and water supply.

- HDPE 100 SDR 11 nominal pressure 16 bar
- HDPE 100 SDR 17 nominal pressure 10 bar

For gas apply: Max. Working pressure is not equal to nominal pressure (see DVGW guideline VP 608 or regulations of respective countries).

Application examples: underground gas pipelines, pipelines for drinking water, vacuum and waste-water disposal pipelines, apparatus and plant construction, chemical industry, fish industry, irrigation systems, disposal technology, waste water treatment plants, waste incineration systems, building of swimming pools and many others.

HDPE 100 fittings and pipes are largely spread within lay underground gas and water pipelines. Substantial advantages are small weight with high flexibility and good chemical resistance.



# WATERPROOFING, ADHESIVES, SEALANTS, FOAMS, MEMBRANES

The Construction Chemicals division offers advanced chemicals solutions for new construction, maintenance, repair and renovation of structures.

Full range of solutions to master all your challenges

- Admixtures for Concrete
- Cement Additives
- Expansion Control Systems
- Performance Flooring Solutions
- Performance Grouts
- Repair and Protection Systems
- Tiling Solutions
- Underground Construction Solutions
- Wall Systems
- Waterproofing Systems and Sealants





# IRRIGATION PRODUCTS

## SPRINKLING

Adjustable sprinklers 40°-360°  
8 nozzles and plastic cover  
Working pressure: 2,1 – 3,4 bar  
Range: 4,6 – 13,5m.  
Inlet: 1/2" F & 3/4" F

- Electric Valves
- Controllers
- PP compression Fittings
- Irrigation Fittings
- Irrigation Valves
- Check Valves
- Butterfly Valves Standard Series
- Ball Valve [std] Series
- Filtration Manual and Automatic
- PP100 Fittings
- Valve Boxes
- Pvc Pressure Fittings



# SWIMMING POOL PRODUCTS

## SWIMMING POOLS FILTERS

- Sand filters
- Cyclone Pre filter
- Hydrocyclone
- Cartridge filters
- Diatomaceous Earth filters
- Nano Fiber Filter
- Mono blocs
- Valve manifold
- Multiport valves
- Compacts filtration housing
- Filtration accessories
- Filtration media

## PUMPS / LED LIGHTING

### BASIN EQUIPMENTS

- Skimmers
- Main drains
- Level regulators
- Wall conduits
- Inlets
- Drain grilles
- Accessories equipment



# SANITARY MATERIALS

## QUALITY, COMFORT AND DESIGN NEVER GO OUT OF STYLE

- Bathroom Suites
- Water Closets
- Kitchen Sink
- Counter Washbasin
- Wall Mounted Washbasin
- Pedestal Washbasin
- Shower Tray
- Bath Tub
- Closets
- Urinal & Accessories
- Specialty Products
- Installation Systems
- Cisterns and Mechanisms
- Faucets and Flushing Systems
- Waste Fittings and Traps
- Bathroom Ceramics
- Ceramics Complementary Products



# GI & MI – PIPES & PIPE FITTINGS

## GI & MI – PIPES & FITTINGS

- Elbow 90D, Elbow 45D, Union, Cap, Socket, R/Socket, Bush, Tee, R/Tee, Plug
- Types – Banded Type Heavy Duty and Collar type light duty
- Connection – BSPT Thread (1/8” to 6”) and NPT Thread (21/2” to 6”) and NPT Thread (21/2” to 6”) and NPT Thread (21/2” to 6”)
- Nominal Size: 1/8 (inch) – 6

## MS BUTT-WELD FITTINGS

- Elbow 90D, Elbow 45D, Cap, Tee, R/Tee, Concentric Reducer, Eccentric Reducer
- Connection -Welded
- Schedule – STD, SCH40, SCH80, XS, SCH160
- Grade – A234 WPB
- Nominal Size: 1/4 (inch) – 60

## MS THREADED FITTINGS

- Elbow 90D, Elbow 45D, Union, Cap, Socket, R/Socket, Bush, Tee, R/Tee, Plug
- Connection – Threaded or Socket Weld
- Pressure – 1000PSI , 2000PSI (2M), 3000PSI (3M) , 6000PSI (6M)
- Thread – BSPT (1000PSI), NPT (2000PSI, 3000PSI, 6000PSI)
- Grade – A105/A105N
- Nominal Size: 1/4 (inch) – 4

## BRASS FITTINGS

- Elbow 90D, Elbow 45D, Union, Cap, Socket, R/Socket, Bush, Tee, R/Tee, Plug
- Connection – BSPT Thread
- Nominal Size: 1/8 (inch) – 4

## SS BUTT-WELD FITTINGS

- Elbow 90D, Elbow 45D, Cap, Tee, R/Tee, Concentric Reducer, Eccentric Reducer, Stub end
- Connection -Welded
- Schedule – SCH10, SCH40
- Grade – SS304 / SS316
- Nominal Size: 1/4 (inch) – 12

## SS THREADED FITTINGS

- Elbow 90D, Elbow 45D, Union, Cap, Socket, R/Socket, Bush, Tee, R/Tee, Plug
- Connection – Threaded or Socket Weld
- Pressure – CL150 low pressure fittings & CL3000 high pressure fittings
- Thread – Threaded or Socket Weld
- Type – Plain End & Banded Ends
- Grade – 304/304L & 316/316L
- Nominal Size: 1/4 (inch) – 4



# ENGINEERING

QUALITY DESIGN & TECHNOLOGY



# TRANSFER PUMPS

This package consists of 2 electric motor driven pumps, one is duty and another one is standby (Assist / Jockey Pumps as per Requirement), suction and discharge manifold, discharge pressure gauge, Control Panel for manual or auto operation of the system, standard accessories and base frame(s).

## TRANSFER PUMP SYSTEM COMPLETE

- Duty + standby pumps (assist / jockey pumps as per requirement)
- Control panel – dol, star / delta, bms outputs, plc, vfd, hmi / alarm
- Suction discharge manifolds – (moc) ss304, ss316 / ms / gi / copper
- SS / brass / bronze / ci– valves
- SS / brass – check valves (nrv)
- SS / ms – base plate / skid
- Pressure tank – (60 – 2000 ltr)
- Pressure switch
- Pressure gauge
- Transducer
- Float switch



# BOOSTER PUMPS (PRESSURE BOOSTING)

## BOOSTER PUMPS

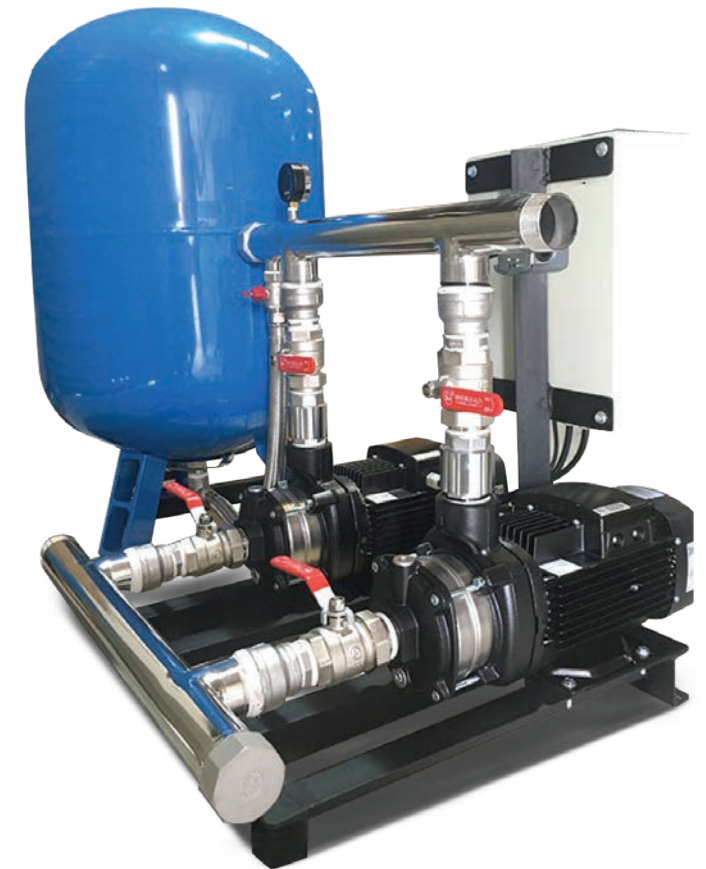
WATER PRESSURE BOOSTER PUMP SETS (also known as pressure boosters, pressure booster pumps, water booster system, booster pressure pumps) offer pressure boosting solutions for domestic mains water and tank water supply systems. Where increased water pressure is needed, pressure booster systems are an effective solution to transfer water at a required pressure where you need it.

All Pumps purpose-build many different configurations of pressure boosting pump sets depending on the customer's requirements, Whether it be Single Duty, Duty/Standby, Duty/Standby/Assist, 2Duty/Standby/Jockey – fixed speed or Variable-frequency drive (VFD).

## BOOSTER SYSTEM COMPLETE

- Duty + standby pumps (assist / jockey pumps as per requirement)
- Control panel – dol, star / delta, bms outputs, plc, vfd, hmi / alarm
- Suction discharge manifolds – (moc) ss304, ss316 / ms / gi / copper
- SS / brass / bronze / ci– valves
- SS / brass – check valves (nrv)
- SS / ms – base plate / skid
- Pressure tank – (60 – 2000 ltr)
- Pressure switch
- Pressure gauge
- Transducer
- Float switch

All Pumps has a solution to your pressure boosting needs.



## AGRICULTURE AND IRRIGATION PUMPS

Irrigation is the artificial application of water onto land for agricultural or ground care purposes. An irrigation pump is therefore used to move water from the water supply to the specified area of dry land. Water irrigation pumps are usually used to assist in crop growing and the maintenance of lawns, vegetation and fields. For this reason they may also be referred to as a lawn irrigation pump. Water pumps for irrigation systems are usually centrifugal pump in design due to their ability to efficiently handle water at a range of flow and pressures. We can supply pumps that meet the low pressure and even flow requirements for uniform and efficient irrigation. Our pumping expertise and technology ensures uniform coverage despite changeable conditions with pump efficiency optimized to reduce energy costs for running irrigation pumps, one of the highest single expenses in agriculture.



## CIRCULATION & CHILLED WATER PUMPS (HOT / COLD)

Circulator pumps (also known as circulation pumps, circulating pumps, recirculating pumps and recirculation pump) circulate fluid in a closed circuit and since the fluid always flows back to the pump, most of the effort is used when it expends pushing water upward. Circulator pumps are commonly used in circulate water in a heating or cooling system.

GRUNDFOS, WILO, DAB, LOWARA, GOULDS Etc.

HOT/COLD water circulators can be used in a range of applications including domestic and commercial buildings to save water and time, cooling & heating of machinery and other processes.

Supplied with suction & discharge isolation and check valves and stainless steel manifolds these systems are a user friendly “complete packaged pump solution”.

Circulator pumps, consisting of a control panel and pumps mounted on a vertical steel frame, are designed to circulate water from a storage tank, through a ring-main system and back to the storage tank for re-heating.

### FEATURES

- Pumps constructed from non-corrosive material
- Single Duty or Duty/Standby
- 24 hour timer
- Temperature Control with Display
- BMS

### FEATURES

- Domestic
- Laundries
- Laboratories
- Hydroponics
- Large commercial premises
- High rise buildings







## SUBMERSIBLE PUMP

SUBMERSIBLE SUMP PUMPS with a choice of single or three phase motors 240 or 415 volt Vortex, Drainage, High Head, Low Head, Cutter, Grinder, Automatic & Manual

- pumping of waste water with soft solids in suspension
- storm water
- grey water pumping
- sewage / septic effluent disposal
- sump emptying
- water transfer
- pumping of light slurries and factory waste

### APPLICATIONS

- Domestic
- Commercial
- Industrial
- Municipal

### OPTIONS

- ( Single Duty, Duty + Standby, Duty + Standby + Assist )
- Alarm / Alarm with Light on control panel
- Lockable steel control panel (IP 66)
- BMS / Level Controllers
- Longer Pumps & floats cables
- Valves and fittings
- Auto Coupling / Free standing Type with Guide rail (SS 304/316) and Chain.

## PRESSURE KITS

### Product features – pressure managers for automatic start-stop of pumps

The new range of compact electronic devices, pressure/flow switches for control and protection of electric pumps. It is controlled by an electronic circuit and is composed of a diaphragm and counteracting spring system integrated with flow and pressure sensors.

### APPLICATIONS

Drinking water supply, Gardening, Groundwater supply

### FEATURES AND BENEFITS

- User-friendly interface
- Free choice of installation position
- Flexible power supply
- Rotary outlet connection
- Protective functions
- Adaptability
- Internal pressure tank
- Power-on indication
- Pump running indication
- Alarm indication
- Dry-running protection
- Rotary outlet connection.
- 

### SPECIFICATIONS

- Delivery: up to 10 m<sup>3</sup>/h
- Power supply: both single and three-phase 50 and 60 Hz
- Power: up to 2.20 kW
- Maximum operating pressure: 10 bar
- Temperature of pumped liquid: to 60 °C



# PRESSURE TANKS

PRESSURE VESSEL/PRESSURE TANK/ACCUMULATORS can be used in conjunction with pressure pump boosting sets. They have the ability to hold water at closed valve static pressure. This will prevent the pump from switching on/off for quick short periods at a time.

**Brands:** – EDS Global, CIMM, GLOBAL WATER SOLUTIONS (GWS), NEMA, WATES, REFLEX

- Pressure Tank – Heating
- Interchangeable Membrane Series; (Heating Series Tanks, High Pressure Series Tanks)
- Fixed Membrane Tank Series; (Heating Series Tanks, Solar Energy Series Tanks, Metal Cased Reverse Osmosis Series Tanks)
- EPDM / Butyl and Special High Temperature Resistant Membranes
- Hot Water Tank Tanks-Boiler Series; (Accumulation Tank, Solar Serpentine Tank, Hygienic Hot Water Tank, Solar Serpentine Hot Water Tank)



## PRESSURE VESSEL PRODUCT RANGE IS AS FOLLOWS

The correct pressure is a prerequisite for the proper operation of heating, solar power and cooling water systems as well as pressure booster systems. It is essential to maintain water at a stable balance, compensate for variations in volume at regulated pressure and prevent gas separation and cavitation.

Expansion vessels offer an easy but intelligent solution. No external energy is needed, neither electrical power, a compressor or a pump. The construction of an expansion vessel is simple:

A bladder divides the vessel into a water and a gas chamber and therefore prevents gas from diffusing into the water. While the water chamber is linked to the system by a vessel connection, the correct pressure in the gas chamber is set by using a filling valve at the top of the expansion vessel. The gas pressure is needed to balance changing water volume or pressure differences.





# CONTROL PANELS (PLC, HMI, VFD, STAR DELTA, DOL)

Motor Starters – Control Panels – Automation and Monitoring Systems

We design, build and test our own in-house control/monitoring panels, including HMI, SCADA, PLC programming, motor starters, inverter drives, temperature and pressure sensors.

PLC and process controller programming / configuration, HMI (Human Machine Interface) touch screen /operator interface design and configuration. All types of motor starters; DOL, Star-Delta, and Variable Frequency Drive (VFD)

## STAR-DELTA STARTING

Some motors can be started using the star-delta method: the motor is first connected in ‘star’ configuration, which allows the motor to gather speed without drawing excessive current. Once the motor is up to speed (or a preset time is elapsed) it is then connected in the normal ‘delta’ configuration. This method can reduce the starting current demand by 30%, but is only suited to applications where the motor is starting without load.

## VARIABLE FREQUENCY (SPEED) DRIVES – VFD

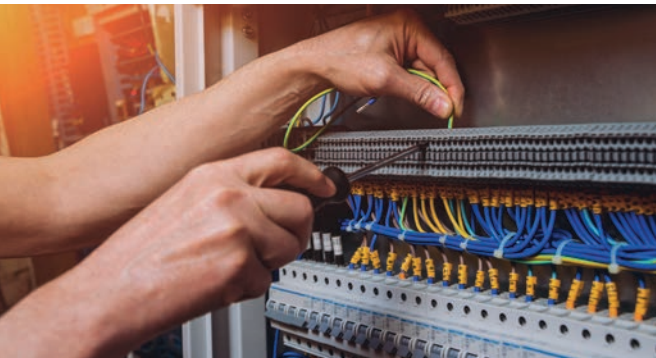
A variable speed drive (VSD), also known as a VFD or VVVF, is an electronic device which allows complete control of the motor speed including starting and stopping. It operates by changing the frequency of the power supplied to the motor. A VFD is extremely versatile and often used in process applications where a constant pressure or flow needs to be maintained. In addition, because the motor can be run at a slower speed and hence use less energy, use of a VFD can facilitate significant power savings.

## DIRECT ONLINE (DOL) STARTING

DOL starting is simply switching the motor on in one operation, with a direct connection from the power source. It’s generally only used for smaller loads, as the starting current can be up to ten times the normal running current of the motor.

A contactor is generally used to switch power, and often a thermal or electronic overload relay is provided for motor protection. Direct online starting is the simplest and cheapest method of motor starting, but consideration needs to be made for power supply limitations on starting current.

- Protection Relays by Range
- Industrial Automation and Control
- Boxes, Cabling and Interfaces
- Contactors and Protection Relays
- Enclosures and Accessories
- Human Machine Interfaces (HMI)
- Interface, Safety and Control Relays
- Motor Starters and Protection Components
- PLC, PAC and Dedicated Controllers
- Power Supplies, Power Protection and Transformers
- Process Control and Safety
- Push Buttons, Switches.
- Sensors and Signaling Devices
- Variable Speed Drives and Soft Starters
- BMS Provision



# MANIFOLDS GI/MS/SS

Transfer / Booster Pump components with a focus on quality and efficiency.

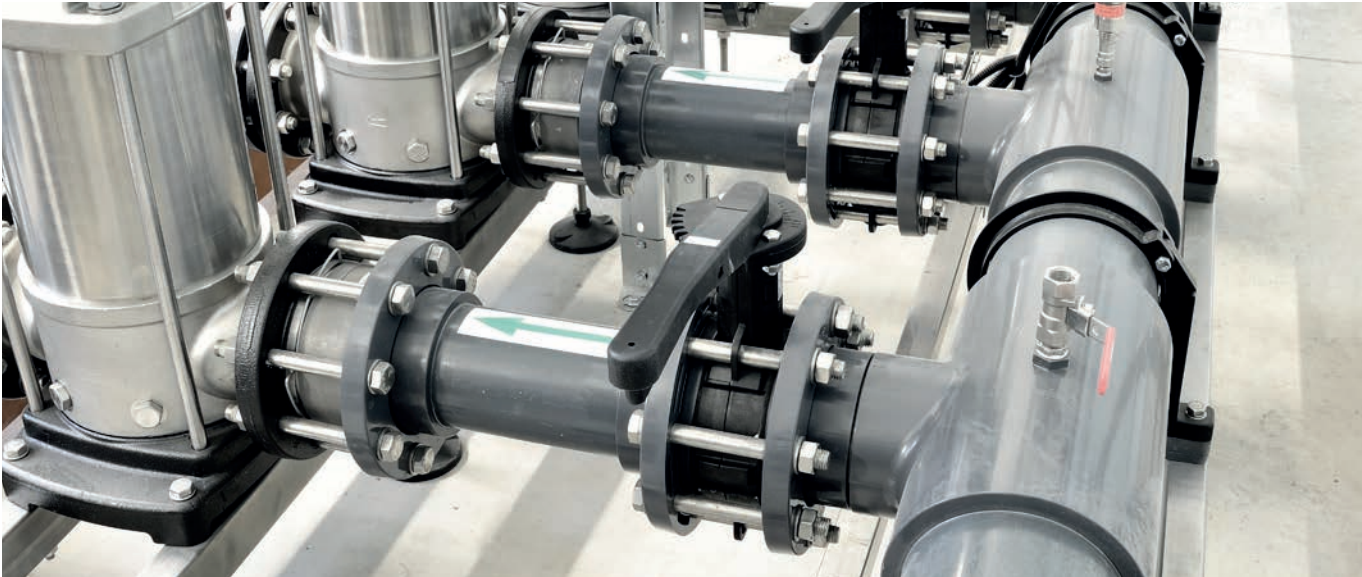
High-performance Transfer & Booster set constructed with premium components and a strict adherence to quality standards. The modular pipe work design of the manifolds has been specially developed to allow consultants and contractors to tailor the set to the installation. As each set is assembled to order, specifics can tailor a pump set to the precise project requirements.

Opar constructs manifolds with two to six pumps with control technology. Our systems are sturdy, compact units with easy access to all service parts. Users can apply these pump sets in a wide array of applications, including domestic water pressure boosting, municipal water transfer, industrial process, HVAC and anywhere else variable flow is required. Because each system is designed to meet specific customer demands for capacity and control, users can move water bsimply and effectively.

## APPLICATION: TRANSFER, BOOSTER, IRRIGATION PUMP SETS

- Media: Water
- Material: GI, MS, SS 304, 316, 304L, 316L etc.
- Branch: 2 – 6
- Nominal diameter: 1”- 8”
- Wall Thickness: 1.0mm – 5.0mm
- Pressure: 10, 16, 21, 25 bar etc.
- Usage: Pump/Water Treatment/Floor Heating System, etc.
- Length: Customized
- Finish: Electrolytic Polishing, Passivation, Brushed, Powder Coated etc.

**Specification:** DIN, AS, ANSI  
**Connection Way:** Thread, Flange, and Groove



# FABRICATION

QUALITY DESIGN & TECHNOLOGY







# OUR PARTNERS

 GRUNDFOS	 pedrollo Pumps UK	 GOULDS WATER TECHNOLOGY a xylem brand	 LOWARA	 TERAL	 +GF+ GEORG FISCHER Piping Systems	 Hepworth Piping Systems	 SEKISUI ESILON PVC, CPVC Pipe Fittings	 CEPEX PVC Fittings & Valves	 PRAHER VALVES Valves
 EDS GLOBAL FLUID TECHNOLOGIES Pressure Tank	 SAER ELETTROPOMPE	 DAB WATER TECHNOLOGY	 DAVEY	 SPERONI WATER PUMPS	 PEŠTAN we build trust Piping Solutions	 COMER PVC Fittings & Valves	 GULF PLAS شركة مصانع بلاستيك تايلوس د.م. Gulf Plastic Industries W.L.L. PVC, CPVC Pipes	 MPI ATLAS PVC, PPR Pipe Fittings	 TYLOS PLASTIC INDUSTRIES CO. W.L.L. PVC, CPVC Pipes
 AKAS PUMPS	 wilo	 E-Tech by Franklin Electric	 CRI	 ESPA	 ASAB HDPE fittings & Drains	 B-R Banninger HDPE, PPRCT & PPR Pipes and Fittings	 EIOFIT HDPE Fittings	 ZENITH plastic Pipes & Pipe Fittings	 RAIN BIRD Irrigation Systems
 LEO PUMP LOVE EACH OTHER	 Steady a xylem brand	 TSURUMI PUMP	 SPP PUMPS	 abs We know how water works	 PEX PLUMBEX UK Domestic Valves	 PEGLER PY Domestic Valves	 TR GI Pipes	 BIS PIPE FITTING INDUSTRY CO. LTD. GI Fittings	 PESTAN CONFLUO CLEVER DRAINS Bathroom and Shower Drains
 BK WATER TANK GRP SECTIONAL PANEL WATER TANK	 AQUA INDUSTRIAL GROUP Swimming Pool Products	 ASTRALPOOL Swimming Pool Pumps & Accessories	 marathon Motors	 calpeda	 RAK CERAMICS Sanitary ware & Tiles	 weber SAINT-GOBAIN Adhesives & Sealants	 BASF We create chemistry Adhesives & Sealants	 DURA FLOW CPVC, PVC, Valves & Fittings	 PARABOND Adhesives & Lubricants
 EATON Powering Business Worldwide	 ABB	 Schneider Electric	 SIEMENS	 CHINT	 S-LINE Silent Piping System	 RAKtherm Ultimate Piping Solutions PPR, UPVC Pipes & Fittings	 ARISTON Electric & Solar Water Heaters	 GROHE Bathroom & Kitchen Fittings	 RUUD Water Heaters





P.O. Box: 30651  
Sharjah, UAE

T: +971 6 5389484

[enquiry@oparuae.com](mailto:enquiry@oparuae.com)  
[www.oparuae.com](http://www.oparuae.com)

