



تصاميم المعادن المتخصصة
Specialized Metal Design

Custom-Made Architectural Metal Works







تصاميم المعادن المتخصصة
Specialized Metal Design

THE POWER TO CREATE



Specialized Metal Design (SMD) was established in 2006 in Dubai following the city's exponential growth to become a leader in customized decorative metalwork and ingenious design & craftsmanship.

In line with the economic development in the G.G.C and U.A.E, the company quickly expanded its' activities to cover the Gulf Region as well as entered new industries such as glass works, aluminum works & signages (internal & external). Our spacious workshop is equipped with most technologically advanced machinery & operated by our 50+ well-trained staff.

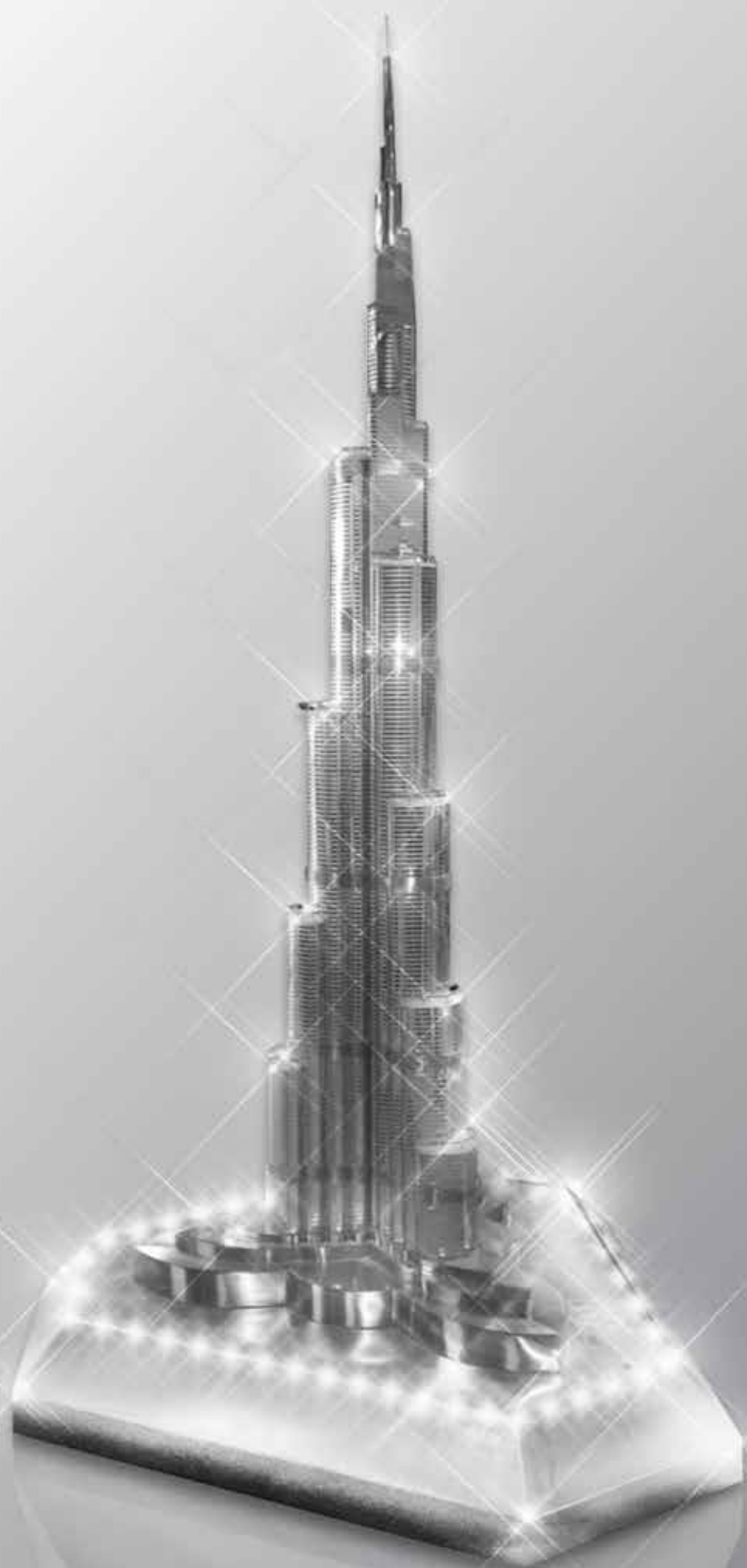
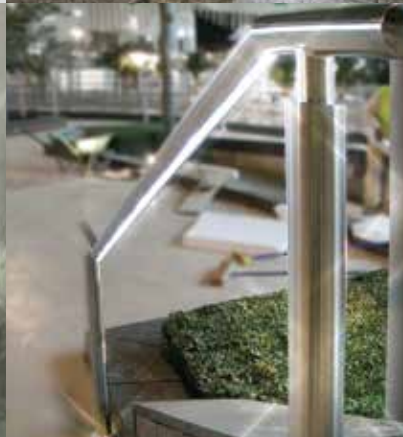


TABLE OF CONTENTS



1.0 Introduction	6
2.0 General Information – Details & Contacts	7
3.0 Contacts and Address for Correspondence	8
3.1 Organization Chart	9
3.2 Company History	10
4.0 Mission and Vision	12
4.1 Our Mission	12
4.2 Our Vision	12
5.1 Facilities and Equipment	13
5.2 Manufacturing Equipment	13
5.3 Manpower and Method Statement	14
6.0 Work Flow Chart	15
6.1 Quality Policy and Objectives	16
6.2 Health, Safety and Environment Policy	17
7.0 Health, Safety and Environment Objectivities	18
8.0 QA/QC Procedure	20
9.0 Product and Services	22
10.0 Industrial License and Registrations	24
10.1 Commercial Register	25
10.2 Industrial License	26
10.3 Partners	27
11.0 QEC Certification	28
11.1 Appreciation Letter	30
11.2 Appreciation Letter	32
11.3 Appreciation Letter	34
12.0 Location Map	36
13.0 List of Current Projects	37

INTRODUCTION & OUR GOALS

Specialized Metal Design [SMD] is a Recognized Leader in Innovative Custom Design and Architectural Metalwork.

Specialized Metal Design was established in Dubai, UAE back in 2006. Growing up in a city with an extraordinary success story as a world leader in Enterprise and modernization has earned the city great international distinction and made Dubai an important business and trading hotspot. SMD continues with this success to grow from strength to strength executing major projects with a great track record for innovative ideas and design - not just in Dubai but throughout the UAE and the Gulf Region.

Our Goals at SMD

- Assist Architects in designing and providing sound engineering in architectural metalwork and fabrication including cost advice as early as possible in the design process.
- Assist Contractors in bringing the designers dreams to fruition with clear time frames and known costs.
- Provide innovative and ingenious solutions to technically difficult tasks.






- Use the latest computer modeling, materials and manufacturing techniques to do what's not considered possible.
- Create satisfied customers.

With our broad experience and diverse skill sets, we become an integral part of the project team from design development through pricing, fabrication and delivery. We love what we do, and get excited about solving problems others pass up - it's just who we are!

GENERAL INFORMATION DETAILS & CONTACTS

Company Name:	Specialized Metal Design
Trade Name:	Specialized Metal Design LLC
License Number:	574989
Legal Type:	Limited Liability Company (LLC)
Formation & Registration in UAE:	16 November 2005
Registered Office and Address:	311a Street, Al Quoz Industrial 2, Dubai, U.A.E.
Area Post Code:	P.O. Box 37461
Telephone Number:	+971 4 338 6036
Fax Number:	+971 4 338 6016
Website:	www.smdesign.me

CONTACTS & ADDRESS FOR CORRESPONDENCE

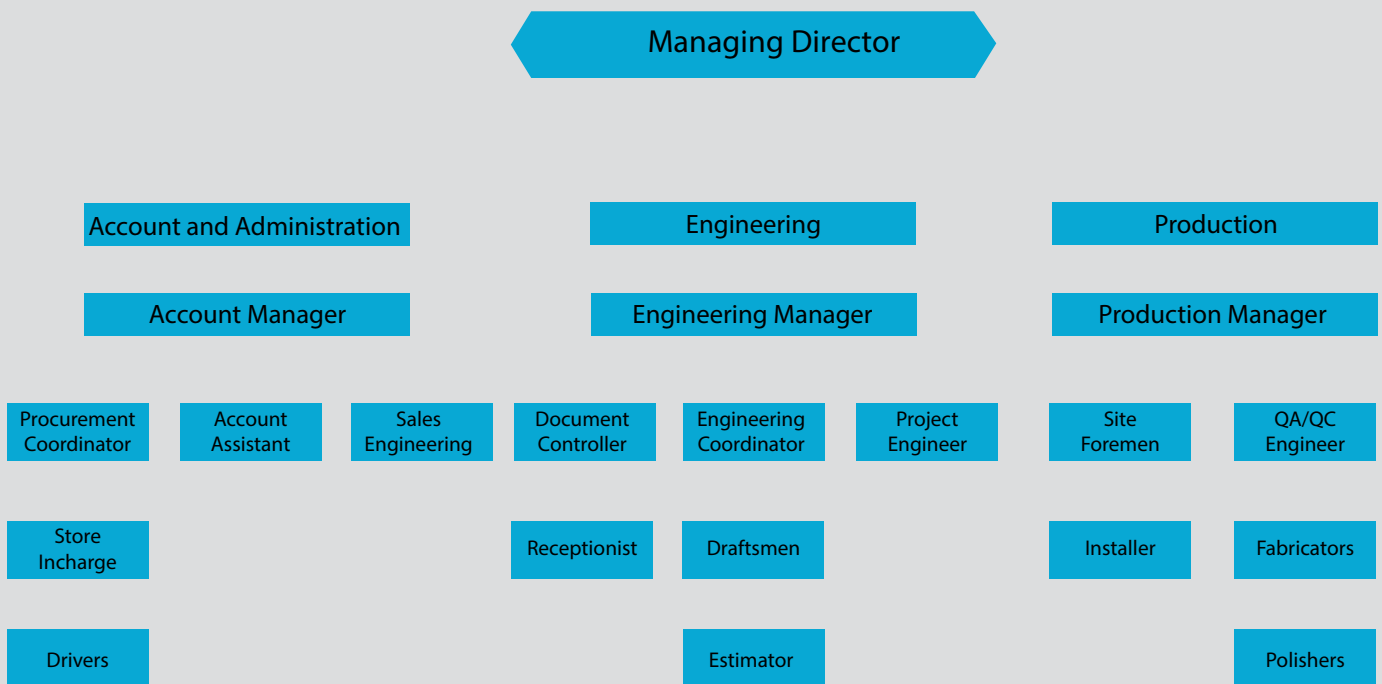
Contact Name : **Atef HAWATMEH**
Position : Managing Director
 +971 4 338 6036
 smdesign@eim.ae
 Info@smdesign.me

Contact Name : **Rosita GUINA**
Position : Engineering Manager
 +971 50 628 3677
 smdesign@eim.ae
 rosie.guina@smdesign.me

For General Contact:

 +971 (4) 338 6036
 +971 (4) 338 6016
 smdesign@eim.ae
 info@smdesign.me
 www.smdesign.me

ORGANIZATION CHART



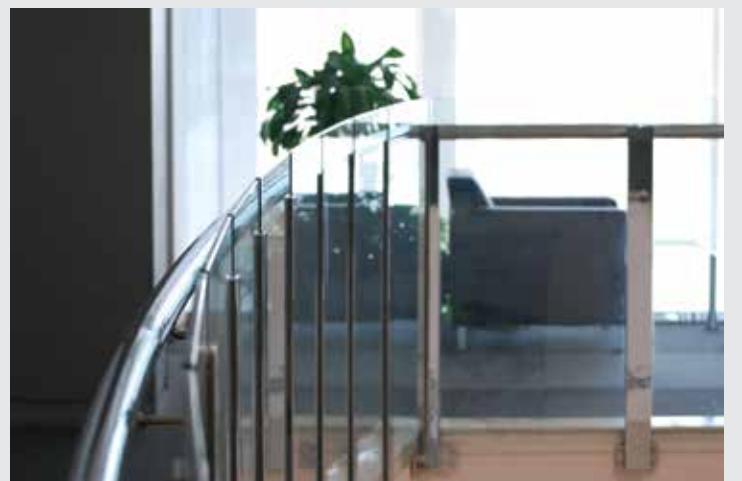


COMPANY HISTORY

Specialized Metal Design (SMD) was established in 2006 in Dubai following the city's exponential growth to become a leader in customized decorative metalwork and ingenious design and craftsmanship.

In line with the economic development in the G.C.C and U.A.E, the company quickly expanded its' activities to cover the Gulf Region as well as entered new industries such as glass works, aluminium works & signage (internal & external). Our spacious workshop is equipped with most technologically advanced machinery & operated by our 50+ well-trained staff. With a variety of durable and quality proven materials such as stainless steel, brass and aluminium to name some, be confident that all of our projects are made with the highest standard of quality to delight our valued clients.

Now SMD is fully committed to giving our clients the highest standards of quality and satisfaction. Our clients include airports, banks, hotels, hospitals, shopping malls, commercial buildings, universities, roads, oil fields and the general commerce.



Thanks to our best asset, Our People. We, Specialized Metal Design is on the rise, business and knowledge wise.



MISSION & VISION

SMD is simply keen on quality - it's in our blood. Clean design, careful engineering and top-notch finishing are simply non-negotiable. Our team has formal training in both engineering and architecture as well as years of real-life experience in metal work, industrial fabrication, fine woodworking, building construction, materials sourcing, cost estimating, production scheduling and project management. This diverse, multi-disciplinary approach shapes the way we work and lets us look at every angle of a project with a discriminating and fresh perspective.

Our Mission:

Our Mission is to establish a good working relationship with all our clients by giving them state-of-the-art quality products beyond their expectations.

Our Vision:

Our Vision is to steadily meet our clients' needs and expectations with in-depth product knowledge and excellent service at a reasonable price.



Our Products and Services:

- All types of Stainless Steel Works
- Handrails and Balustrades
- Canopies
- All types of Kiosks (ATM, Drive thru, etc.)
- Metal Wall and Column Cladding
- Custom made signs(internal and External, way finding)
- Special Decorative Metalwork
- Street and Landscaping Furniture
- CNC Cutting
- V-Grooving

FACILITIES & EQUIPMENTS

Manufacturing Equipment

- Waterjet cutting system model Scorpi on 316
- 3 Axis CNC V-Grooving Machine
- CNC press brake power bend pro
- Four head pipe polishing Machine
- Painting Booth
- Flat Polishing Machine
- Long Belt polishing
- Pipe Driller machine
- Welding machines
- Aluminium welding machine
- Tig welding machine
- Mig welding machine
- Stud welding machine
- Shearing machine
- Scaffolding
- Surface grinder machines
- Magnetic Drill
- Pipe Notcher machine
- Stacker fixed forklift
- Magnetic core drill machine
- Roller machine
- Folding machine



Transportation

- Kia Sportage
- Nissan Navara pickup 1T
- Toyota HIACE – Van
- Toyota Corolla – 2nos
- Ford
- Mitsubishi Pick up 3T
- Nissan Single cab 1T
- Lincoln MKX13
- Kia Sportage
- Mitsubishi L200
- Roza Bus

MANPOWER & METHOD STATEMENT

- A. Managing Director = 1
- B. Engineering & Projects Manager = 1
- C. Production Manager = 1
- D. Accounts Manager = 1
- E. Admin Staff= 15
- F. Skilled Fabricator/Installer/polishers= 50
- G. Semi-Skilled Fabricator/Installer =6
- H. Drivers = 4

Method Statement

Planning and Pre Production Process

1. Review of incoming Enquiry.
2. Review of the required product and terms and conditions.
3. Gathering of information regarding the specifications of the materials we need.
4. Preparation of the Quotation.
5. Approved Quotation sent to the client before deadline.
6. Send Sample material (if Requested from Client).
7. Sample material Approved.
8. Procurement/Purchase of material after receiving LPO.
9. Create drawings for the final product.
10. Incoming materials to be inspected by QC.

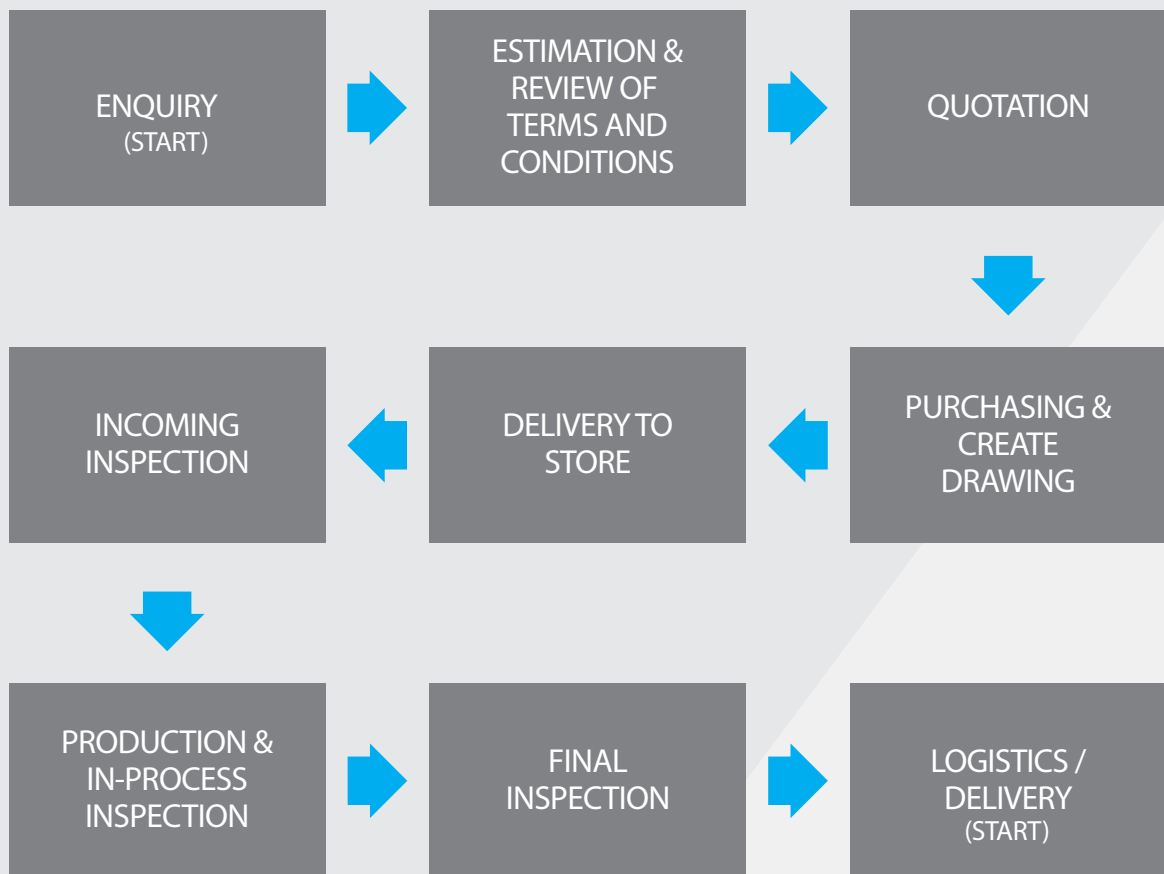
11. Inspected and approved materials are delivered to the store.
12. Commencement of the production process.

Production Process

1. Fabrication of the raw material according to the approved drawings.
2. In-Process QC inspection.
3. Polishing of the fabricated materials.
4. Treatment of the materials (if applicable).
5. Final QC inspection.
6. Packing and storing of the finished products.
7. Delivery of the products to the given location.
8. Installation of the products at the site (if applicable).



WORK FLOW CHART





QUALITY POLICY & OBJECTIVES

Specialized Metal Design LLC is dedicated to produce and manufacture quality products efficiently and professionally in line to our strict delivery schedule and reasonable cost to our customers while driving to become a world class metal design solution under constant commitment to improve company's Quality Management System.

Quality Objectives

- To clearly define the procedures and responsibilities of a total quality management program with the ultimate goal being to provide our valued customers with parts or product that will meet or exceed their individual specifications and requirements.
- Provide detailed procedures required to accomplish uniform quality assurance for the company's product.
- Furnish general purpose information useful in the administration of quality assurance activities.
- Any product manufactured, supplied or installed by Specialized Metal Design LLC under contract shall be manufactured under appropriate specifications

or their supplemental standards and subject to quality control and quality assurance standards outlined therein.

- To reduce rejections by customers and end users to zero.
- Maintain and improve Quality Management System (QMS) from time to time.



HEALTH, SAFETY & ENVIRONMENT (HSE) Policy

Specialized Metal Design LLC (SMD) is entirely committed to anticipate all relevant work injuries, upcoming illness to all employees, clients and the members of the community. Likewise, SMD is devoted to protect the entire environment, natural resources and every ecosystem.

Throughout the implementation of the above HSE Policy, SMD will:

- Sustain Health, Safety and Environment (HSE) as a framework of everyone above anything else.
- Constant evaluation and identification of operational risks and proactively identify the most effective control on it.
- Comply with all U.A.E.'s environmental regulations and relevant international procedure.
- Provide information, instruction and supervision for employees and customers.
- Reduce the consumption of water, energy and natural resources.
- Conduct suitable waste management system.
- Provide constant improvement of HSE performance and policy.
- Conduct review and revision of this policy if necessary.

HEALTH, SAFETY & ENVIRONMENT (HSE) OBJECTIVITIES

Health, safety and clean environment are the most important to us above anything else.

Specialized Metal Design L.L.C. is motivated to promote and develop the following objectives:

- Implement company-wide HSE practice
- Identify, evaluate and control potential HSE risk and how to deal with it
- Develop and provide environmental and safety training
- Create a zero work accident program
- Reduce the use of water, gas and electricity
- Reduce waste and promote recycling





QA/QC PROCEDURE

Incoming Inspection Procedures

1. Receive packing list or delivery order together with the mill test certificate from the store department.
2. Review of mill test certificate.
3. Verify the required raw materials into the job order or purchase order.
4. Perform 100% quantity (store), visual and dimensional inspection.
5. All materials and documents which are not conforming to the required standard or client specification are automatically rejected and should be return to supplier.
6. Inform the store department if the materials are satisfactory or not.
7. Update the report into the consolidated incoming inspection log report.
8. Designate serial number and attached into the box file for easy access and traceability.

NOTE: If any destructive or non-destructive tests are required by the client prior to mass production, cut a sample specimen from delivered materials, put a tag with heat number on it and send it to designated laboratory. Once the results are "passed", the store department should be informed to release the materials.

In Process Inspection Procedures

1. Collect all current on-hand job order from engineering coordinator.
2. Inspect all materials under process as per the drawing and required finishing.
3. In-process work such as tack welding dimensions before full welding, cutting dimensions, bending and polishing, painting preparation and painting proper are needed to be inspected.
4. If any defects are there, report it to production foreman or production engineer for them to fix it immediately to improve productivity and reduce rejections during final inspection.



5. All necessary data and defects found during in-process inspection are recorded on the drawing or in-process inspection sheet.
6. In-process inspection reports should be attached to the final or pre-shipment inspection report for filing.

NOTE: Repeated job or rework and issuance of new materials due to production mistake at any particular stage should get an approval from Managing Director

Final Inspection Procedures

1. Receive inspection requisition form with corresponding materials to be inspected from production department.
2. Collect all necessary drawings corresponding to the job order number and inspection tools.
3. Perform 100% visual and dimensional inspection.
4. All non-conformances noted while performing the final inspection will be recorded on the final inspection record and production department should be informed for corresponding corrective actions.
5. Materials/Product will be re-inspected when the non-conformances are corrected
6. Put official "QA/QC PASSED" stickers to all conforming products.
7. Update the report into the consolidated final inspection log report
8. Designate serial number and attached into the box file for easy access and traceability.

NOTE: If any destructive, non-destructive tests or third party inspection are required by the client, intimation from client through engineering manager should be properly coordinated in order to give proper schedule of inspection and test. Repeated job or rework and issuance of new materials due to production mistake at any particular stage should get an approval from Managing Director

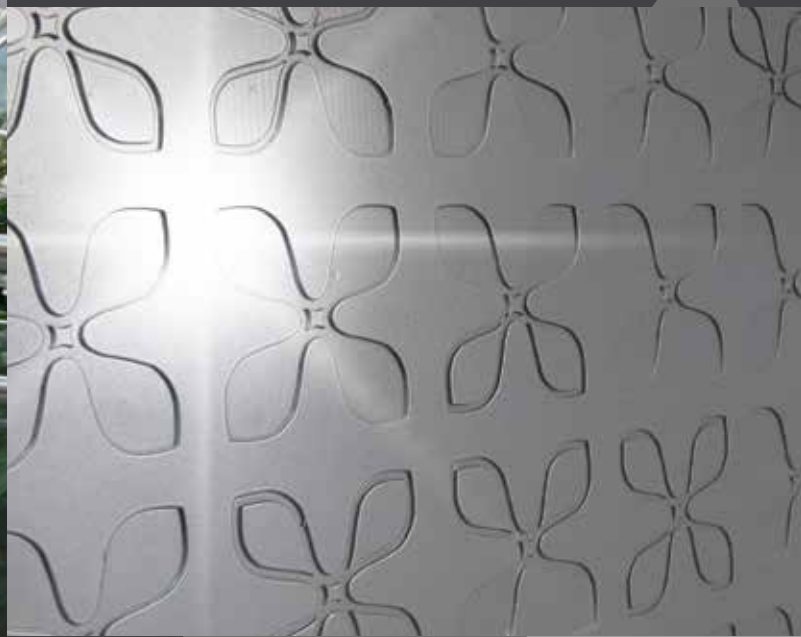


تصاميم المعادن المتخصصة
Specialized Metal Design

SMDESIGN.ME



PROCESS SERVICES



PRODUCT AND SERVICES

STAINLESS STEEL BOLLARDS



MS BOLLARDS



CLADDING WORKS

Project : Zayed University AUH
Powder Coated Aluminum Decorative Fence/
Segregation Wall



CANOPY

Project : Dubai International Airport Concourse –A
Business Class Lounge Canopy



Project : Aswaq
Canopy



Project : limitless
Limitless Glass Canopy



CLADDING WORKS

Project : Paris Sorbonne University
ACM Column Cladding



CANOPY

Project : Residential Buildings at Al Nadha & Al Mamzar
Stainless Steel Canopy to Building Entrance



CLADDING WORKS

Project : Dubai International Airport- Duty Free Terminal 3 (C3)
Stainless Steel Light Track Cladding (Straight & Curved)



CLADDING WORKS

Project : Zayed University AUH
Powder Coated Aluminum Decorative Fence/
Segregation Wall



CLADDING WORKS

Project : Dubai International Airport- Duty Free Terminal 3 (C3)
Stainless Steel Light Track Cladding (Straight & Curved)



STAINLESS STEEL FOOTRAILS

Project : Dubai International Airport) Terminal 1
Stainless Steel Footrails



Project : Dubai International Airport) Terminal 2
Circular Type of Stainless Steel Footrails



STAINLESS STEEL & GLASS RAILINGS

VARIOUS PROJECTS

Dubai International Airport T2



STAINLESS STEEL FOOTRAILS

Project : Dubai International Airport)
Circular Type of Stainless Steel Footrails



SIGNAGES

Project : The Lagoons
Signages



STAINLESS STEEL RAILINGS

Various Project



GLASS RAILINGS

Project : Marina Gate 1



STAINLESS STEEL RAILINGS

Various Project



KIOSK

Emirates NBD Kiosk



Digital Advertisement Kiosk



Company Logo Advertisement Kiosk



INDUSTRIAL LICENSE & REGISTRATIONS

- Commercial Register
- Industrial License
- Partners

COMMERCIAL REGISTER



شهادة شهر قيد شركة في السجل التجاري Commercial Register

تفاصيل القيد / Register Details			
Main Lice. Nr	574989	رقم الرخصة الأم	Register No. 77124
Company Name	تصاميم المعادن المتخصصة (شركة ذات مسئولية محدودة) SPECIALIZED METAL DESIGN (L L C)		
Legal Type	Limited Liability Company(LLC)	الشكل القانوني	ذات مسئولية محدودة
Expiry Date	15/11/2019	تاريخ الإصدار	Reg. Date 12/11/2005
D&B D-U-N-S ® No.		الرقم العالمي	561599023
تفاصيل رأس المال / Capital Details			
Nominated	300,000	الإسمى	
Paid	300,000	المدفوع	
No. of Shares	0	عدد الأسهم	
Currency	UAE Dirhams	العملة	درهم اماراتي
عنوان الرخصة / License Address			
مستودع 4 5 ملك احمد عتيق احمد المري- القوز الصناعية			
عنوان السجل التجاري / Commerce Address			
مستودع 5 ملك احمد عتيق احمد المري- القوز الصناعية			
أنشطة السجل / Register Activities			
Building Metal Products Manufacturing		صناعة الاشغال المعدنية للمباني	
Traffic & Road Signs Installation		تركيب اللوحات والمستلزمات المرورية والارشادية	
Modular Fabrication & Assembly		تجميع وتجهيز التركيبات الإنشائية	
Traffic Signs Manufacturing		صناعة اللوحات والعلامات المرورية والارشادية	

Print Date 11/03/2019 10:34 تاريخ الطباعة Receipt No. 13138860 رقم الإيصال

يمكنك الآن تجديد رخصتك التجارية من خلال الرسائل النصية القصيرة، أرسل رقم الرخصة إلى 6969 (دو/اتصالات) للحصول على إذن الدفع.
Now you can renew your trade license by sending a text message (SMS). Send your trade license number to 6969 (Du/ Etisalat) to receive payment

وثيقة إلكترونية معتمدة وصادرة بدون توقيع من دائرة التنمية الاقتصادية. لمراجعة صحة البيانات الواردة في الرخصة برجاء زيارة الموقع www.dubaied.gov.ae
Approved electronic document issued without signature by the Department of Economic Development. To verify the license kindly visit www.dubaied.gov.ae

INDUSTRIAL LICENSE



رخصة صناعية Industrial License

تفاصيل الرخصة / License Details

License No.	574989	رقم الرخصة
Company Name	SPECIALIZED METAL DESIGN (L L C)	اسم الشركة
Trade Name	SPECIALIZED METAL DESIGN (L L C)	الإسم التجاري
Legal Type	Limited Liability Company (LLC)	الشكل القانوني
Expiry Date	15/11/2019	تاريخ الانتهاء
D&B D-U-N-S ® No	561599023	الرقم العالمي
Register No.	77124	رقم السجل التجاري
Issue Date	16/11/2005	تاريخ الإصدار
Main License No.	574989	رقم الرخصة الأم
DCCI No.	102786	عضوية الغرفة

الأطراف / License Members

Share / الحصص	Role / الصفة	Nationality / الجنسية	Name / الإسم	No./ رقم الشخص
	Manager / مدير	Jordan / الاردن	ربا عاطف جريس حواتمه	333260
	Manager / مدير	Jordan / الاردن	عاطف جريس عواد حواتمه	333259

نشاط الرخصة التجارية / License Activities

Traffic & Road Signs Installation	تركيب اللوحات والمستلزمات المرورية والارشادية
Modular Fabrication & Assembly	تجميع وتجهيز التركيبات الإنشائية
Building Metal Products Manufacturing	صناعة الاشغال المعدنية للمباني
Traffic Signs Manufacturing	صناعة اللوحات والعلامات المرورية والارشادية

العنوان / Address

Phone No	4-971-3386036	تليفون	P.O. Box	37461	صندوق بريد
Fax No	4-971-3386016	فاكس	Parcel ID	365-152	رقم القطعة
Mobile No	50-50-5040272	هاتف متحرك			مستودع 4 5 ملك احمد عتيق احمد المري- القوز الصناعية

الملاحظات / Remarks

تم إضافة شريك و انسحاب شريك و إضافة النشاط و تغيير المدير في 10/03/2019

Print Date	11/03/2019	10:34	تاريخ الطباعة	Receipt No.	13138860	رقم الإيصال
------------	------------	-------	---------------	-------------	----------	-------------

يمكنك الآن تجديد رخصتك التجارية من خلال الرسائل النصية القصيرة، أرسل رقم الرخصة إلى 6969 (دو/اتصالات) للحصول على اذن الدفع.
Now you can renew your trade license by sending a text message (SMS). Send your trade license number to 6969 (Du/ Etisalat) to receive payment

وثيقة إلكترونية معتمدة وصادرة بدون توقيع من دائرة التنمية الاقتصادية. لمراجعة صحة البيانات الواردة في الرخصة برجاء زيارة الموقع www.dubaided.gov.ae
Approved electronic document issued without signature by the Department of Economic Development. To verify the license kindly visit www.dubaided.gov.ae

PARTNERS



ملحق الشركاء Partners

تفاصيل الرخصة / License Details

D&B D-U-N-S * No. 561599023 الرقم العالمي License No. 574989 رقم الرخصة

أصحاب الرخصة / License Partners

Share / الحصص	Sr. No./مسلسل الشخص	Nationality / الجنسية	Name / الإسم
51.0000000%	183235	الإمارات / United Arab Emirates	bader abduallah ahmed / بدر عبدالله أحمد حسن السلطان
25.0000000%	333260	الأردن / Jordan	rub a j hawatmeh / ربا عاطف جريس حواتمه
24.0000000%	333259	الأردن / Jordan	ATEF J A HAWATMEH / عاطف جريس عواد حواتمه

Print Date 11/03/2019 10:34 تاريخ الطباعة Receipt No. 13138860 رقم الإيصال

يمكنك الآن تجديد رخصتك التجارية من خلال الرسائل النصية القصيرة، أرسل رقم الرخصة إلى 6969 (دو/اتصالات) للحصول على إذن الدفع.
Now you can renew your trade license by sending a text message (SMS). Send your trade license number to 6969 (Du/ Etisalat) to receive payment

وثيقة إلكترونية معتمدة وصادرة بدون توقيع من دائرة التنمية الاقتصادية، لمراجعة صحة البيانات الواردة في الرخصة برجاء زيارة الموقع www.dubaided.gov.ae
Approved electronic document issued without signature by the Department of Economic Development. To verify the license kindly visit www.dubaided.gov.ae



تصاميم المعادن المتخصصة
Specialized Metal Design

SMDESIGN.ME

QEC Certification



QEC CERTIFICATION



CERTIFICATION
Quality Management System

Certificate of Approval

This is to certify that the QMS of
Specialized Metal Design L.L.C.

Al Quoz Industrial Area 2,
Dubai, United Arab Emirates

Has been assessed and found to meet the requirements of

ISO 9001:2015

This certificate is valid for the following scope of operations

Traffic & Road Signs Installation
Modular Fabrication and Assembly
Building Metal Products Manufacturing
Traffic Sign Manufacturing

Authorised by:

R N Cooke
Director

Date of Certificate Issue: 13 April 2017

Certificate Valid Until: 12 April 2020

Recertification Audit before 13 March 2020. Certified since 09 December 2013.
This certificate is the property of SN Registrars (Holdings) Limited and remains valid
subject to satisfactory annual Surveillance Audits.

SN Registrars (Holdings) Limited

Registration House, 22b Church Street,
Rushden, Northamptonshire,
NN10 9YT, UK
Tel: +44 (0) 1933 383261
Email: enquiries@qec.co.uk
Web: www.qec.co.uk
Company Number: 07659067

Certificate Number: QEC 86699542/23/Q Rev: 001





CERTIFICATION

Environmental Management System**Certificate of Approval**

This is to certify that the EMS of
Specialized Metal Design L.L.C.

Al Quoz Industrial Area 2

Dubai, 37461

United Arab Emirates

Has been assessed and found to meet the requirements of

ISO 14001:2015

This certificate is valid for the following scope of operations

Building Metal Products Manufacturing
Traffic Signs Manufacturing

Authorised by:

R N Cooke
Director

Date of Certificate Issue: 21 January 2019**Surveillance Due Date: 20 January 2020**

Recertification audit before 21 December 2021. Certified since 21 January 2019.
This certificate is the property of SN Registrars (Holdings) Limited and remains valid
subject to satisfactory annual Surveillance Audits.

SN Registrars (Holdings) Limited

Registration House, 22b Church Street,

Rushden, Northamptonshire,

NN10 9YT, UK

Tel: +44 (0) 1933 383261

Email: enquiries@qec.co.uk

Web: www.qec.co.uk

Company Number: 07659067

Certificate Number: QEC 77182110/77/E Rev: 001

QEC CERTIFICATION



CERTIFICATION

**Occupational Health & Safety
Management System**

Certificate of Approval

This is to certify that the OHSMS of
Specialized Metal Design L.L.C.

Al Quoz Industrial Area 2

Dubai, 37461

United Arab Emirates

Has been assessed and found to meet the requirements of

BS OHSAS 18001:2007

This certificate is valid for the following scope of operations

Building Metal Products Manufacturing
Traffic Signs Manufacturing

Authorised by:

R N Cooke
Director

Date of Certificate Issue: 21 January 2019

Surveillance Due Date: 11 March 2020

Recertification audit before 21 December 2021. Certified since 21 January 2019.
This certificate is the property of SN Registrars (Holdings) Limited and remains valid
subject to satisfactory annual Surveillance Audits.

SN Registrars (Holdings) Limited
Registration House, 22b Church Street,
Rushden, Northamptonshire,
NN10 9YT, UK
Tel: +44 (0) 1933 383261
Email: enquiries@qec.co.uk
Web: www.qec.co.uk
Company Number: 07659067

Certificate Number: QEC 43511492/77/O Rev: 001



APPRECIATION LETTER





Al Jaber L.E.C.T. Engineering & Contracting (ALEC) L.L.C.
الجبائر إل جي جي انجنيئرنگ و الكونسلانج (أليك) ل.م.م.

ABU DHABI
Villa 1, Western Residence
Sheifa City A
PO Box 45398 Abu Dhabi UAE
Tel: +971-2-558 7542
Fax: +971-2-558 3448
www.alec.ae

DUBAI
3001 Marine Plaza
Dubai Marina
PO Box 27033 Dubai UAE
Tel: +971-4-429 8588
Fax: +971-4-429 8576
Email: info@alec.ae
www.alec.ae

أبو ظبي
عمارة رقم ١ - غرب الدبي
شيفاء مدينة أ
صندوق بريد 45398
أبو ظبي الإمارات العربية المتحدة
الهاتف: +971 2 558 7542
فاكس: +971 2 558 3448
www.alec.ae

الدبي
مبنى رقم 3001
دبي مارينا
صندوق بريد 27033
الدبي الإمارات العربية المتحدة
الهاتف: +971 4 429 8588
فاكس: +971 4 429 8576
www.alec.ae

Our Reference: ALEC/CBO71/SLO/TE/7895

5th July 2013

To Whom It May Concern:

**Subject: Dubai Airport Concourse 3
Fit-out works on First Class and Business Class Lounge**

This is to certify that **Specialized Metal Design** have successfully completed their works in respect of supply and install of Sundry metal works and the supply and install of Business Class Reception Canopy on the above mentioned project to the fullest satisfaction of the Consultant and Client.

We would like to express our grateful thanks to Mahmoud Yousef and his team and look forward to work with them on future projects.

Yours faithfully,
For and on behalf of Al Jaber L.E.C.T. Engineering & Contracting (ALEC) L.L.C.

Thomas Erasmus
Contracts Manager



Company Registration Number 102882 - Capital Dhs 25 Mln



Al Jaber L.E.C.T. Engineering & Contracting (ALEC) L.L.C.
الجبائر إل جي جي انجنيئرنگ و الكونسلانج (أليك) ل.م.م.

ABU DHABI
Villa 1, Western Residence
Sheifa City A
PO Box 45398 Abu Dhabi UAE
Tel: +971-2-558 7542
Fax: +971-2-558 3448
www.alec.ae

أبو ظبي
عمارة رقم ١ - غرب الدبي
شيفاء مدينة أ
صندوق بريد 45398
أبو ظبي الإمارات العربية المتحدة
الهاتف: +971 2 558 7542
فاكس: +971 2 558 3448
www.alec.ae

DUBAI
3001 Marine Plaza
Dubai Marina
PO Box 27033 Dubai UAE
Tel: +971-4-429 8588
Fax: +971-4-429 8576
Email: info@alec.ae
www.alec.ae

الدبي
مبنى رقم 3001
دبي مارينا
صندوق بريد 27033
الدبي الإمارات العربية المتحدة
الهاتف: +971 4 429 8588
فاكس: +971 4 429 8576
www.alec.ae

December 23, 2012

LETTER OF APPRECIATION

To Whom It May Concern:

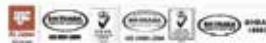
Subject: Yas Water Park Project

This is to certify that **Specialized Metal Design (SMD)** Have successfully completed **Miscellaneous Stainless Steel Works of YAS Water Park Project** as per the project Requirements and complete satisfaction of ALEC, Consultant and Client.

We would like to congratulate you on the job well done in **Yas Water Park Project**. As token of appreciation and gratitude, ALEC Management is grateful to honor **Specialized Metal Design (SMD)** for the efforts and look forward to maintain the same level of commitment on all our future endeavors together.

Sincerely yours,

Tony Hanna
Project manager



Company Registration Number 102882 - Capital Dhs 25 Mln



Al Jaber L.E.C.T. Engineering & Contracting (ALEC) L.L.C.
الجبائر إل جي جي انجنيئرنگ و الكونسلانج (أليك) ل.م.م.

ABU DHABI
Villa 1, Western Residence
Sheifa City A
PO Box 45398 Abu Dhabi UAE
Tel: +971-2-558 7542
Fax: +971-2-558 3448
www.alec.ae

أبو ظبي
عمارة رقم ١ - غرب الدبي
شيفاء مدينة أ
صندوق بريد 45398
أبو ظبي الإمارات العربية المتحدة
الهاتف: +971 2 558 7542
فاكس: +971 2 558 3448
www.alec.ae

DUBAI
3001 Marine Plaza
Dubai Marina
PO Box 27033 Dubai UAE
Tel: +971-4-429 8588
Fax: +971-4-429 8576
Email: info@alec.ae
www.alec.ae

الدبي
مبنى رقم 3001
دبي مارينا
صندوق بريد 27033
الدبي الإمارات العربية المتحدة
الهاتف: +971 4 429 8588
فاكس: +971 4 429 8576
www.alec.ae

Our Reference: ALE-MMP-SLO-CW-0549

08th December 2008

Specialized Metal Design
PO Box 37493
Dubai,
United Arab Emirates

Attention: Mr. Mahmoud Yousef
Project: MEMORIAL PARK (Wahat Al Karima) - Abu Dhabi
Subject: Performance and Recommendation

Dear Sir,

We write to express our appreciation and congratulations to the SMD team that was involved in the successful Memorial Park project that was recently built and opened in Abu Dhabi, UAE.

We are very proud to advise that recently our project has a visit from His Highness Sheikh Mohammed Bin Zayed Al Nahyan, Crown Prince of Abu Dhabi and Deputy Supreme Commander of the Armed Forces who initiated the creation of the Memorial Park to honour the UAE's fallen soldiers. The Park was re-named "Wahat Al Karima", (Oasis of Dignity). "Wahat Al Karima" is now a cultural landmark that reflects the UAE's pride in the sacrifices made by its heroes.

The professionalism, support and commitment shown from all involved from SMD in this project was both impressive and appreciated. Your contribution to the project made a huge positive impact in our ability to complete the project in time for the Commemoration Day on 30th November 2008.

Thank you to all at SMD for delivering on your promises and being part of a successful project team. We look forward to working with you again in the future.

Yours faithfully,

Carl Worsley
Senior Contracts Manager

ALEC Brad McEvoy - Senior Quantity Surveyor
ALEC James Felt - Contract Manager



Company Registration Number 102882 - Capital Dhs 25 Mln



تصاميم المعادن المتخصصة
Specialized Metal Design

SMDESIGN.ME



LOCATION MAP



LIST OF CURRENT PROJECTS

LIST OF COMPLETED PROJECTS

YEAR AWARDED	PROJECT	CLIENT	SCOPE OF WORK	COMPLETION DATE
2006	DUBAI AIRPORT CONCOURSE 2 TERMINAL 3	HABTOOR MURRAY AND ROBERTS	SUPPLY AND INSTALL STAINLESS STEEL CLADDING & SS SCULPTURES	Jul-06
2007	RESIDENTIAL TOWERS	ALEC ENGINEERING AND CONTRACTING LLC	SUPPLY AND INSTALLATION OF MISC METAL WORKS	Oct-07
2007	PARK HYATT HOTEL	ALEC ENGINEERING AND CONTRACTING LLC	MISC STEEL WORKS (METAL TRIMS, LIFT DOOR JAMB, SS FRAMES, SS FLOOR INLAIS AND SS CLADDING)	Jan-07
2006	7 RESIDENTIAL BUILDINGS AT AL MAMZAR AND AL NADHA	ALEC ENGINEERING AND CONTRACTING LLC	ALUMINUM CLADDED STEEL CANOPIES	Feb-07
2007	BURJ DUBAI (OLD TOWN)	ETA MELCO	STAINLESS STEEL & BRASS CLADDING	Feb-07
2008	LIMITLESS	AL HABTOOR ENGINEERING ENT.	STAINLESS STEEL BRASS & SPECIAL WORKS	Jan-08
2008	ABU DHABI AIRPORT	AL HABTOOR ENGINEERING ENT.	HANDRAILS AND PLANTERS BOXES	Jan-08
2008	LAGOONS SALES CENTER	SAMA CONTRACTING	STAINLESS STEEL HANDRAILS AND SIGNAGES	May-08
2008	DUTY FREE - ABU DHABI AIRPORT	HABTOOR MURRAY AND ROBERTS	STAINLESS STEEL COLUMN CLADDING AND LIGHT BOXES	Jun-08
2009	EMIRATES BANK - NATIONAL BANK OF DUBAI	EMIRATES NBD	FABRICATION SUPPLY OF DRIVE THRU ATM KIOSK	09-Feb
2009	PARIS - SORBORNE UNIVERSITY - ABU DHABI	MUBADALLA DEVELOPMENT COMPANY	SUPPLY AND INSTALL OF COLUMN CLADDING	YEAR 2009
2010	FERRARI WORLD - ABU DHABI	DEPA DÉCOR	SUPPLY AND INSTALL OF HANDRAIL	Mar-10
2010	AL GHURAIR CITY EXPANSION PROJECT PHASE II	AL HABTOOR ENGINEERING ENT.	SUPPLY AND INSTALL OF MISC STEEL WORKS (GLASS PARTITION SECONDARY STRUCTURE)	Jun-10
2010	DALMA MALL - ABU DHABI	DALMA MALL	SUPPLY AND INSTALLATION OF SIGNAGE, DIRECTIONAL SIGNAGES	Jun-10
2010	ADEC SCHOOL	ABU DHABI EDUCATION COUNCIL	SUPPLY AND INSTALL OF SCHOOLS SIGNS	Oct-10
2011	ZAYED UNIVERSITY - ABU DHABI	AL HABTOOR MURRAY AND ROBERTS	SUPPLY AND INSTALLATION OF ALUMINUM SEGREGATION FENCE AT COURTYARD CENTRAL, SS SIGNS AND LOGOS	May-11
2011	(INDIA)	SKY - ORYX JV - DOHA QATAR	SUPPLY PERFORATED MESH FRAMES EVODS DIRECTORY SIGNS & STATIC SIGNS	May-11
2011	DUBAI INTERNATIONAL AIRPORT EXPANSION C3 (AX 124 PACKAGE)	ALEC ENGINEERING AND CONTRACTING LLC	SUPPLY AND INSTALL OF MEP, FINISHES, SIGNAGE WORKS FOR C3, BCL CANOPY, MAJLIS FACILITY T3	Oct-11
2011	TN/ENM 065/08 - UNIT RATE CONTRACT FOR MAINTENANCE WORKS RELATED TO CLADDING & SIGNATURE ITEMS AT EMARAT FACILITIES	EMIRATES GENERAL PETROLEUM CORPORATION	UNIT RATE CONTRACT FOR SIGNAGE AND CLADDING	Oct-11
2011	WATER THEME PARK AT YAS ISLAND - ABU DHABI	ALEC ENGINEERING AND CONTRACTING LLC	SUPPLY, FABRICATION AND INSTALLATION OF NON STRUCTURAL METAL WORKS	Oct-11
2013	NILONA TOWER - MARRIOTT HOTEL & MARRIOTT EXECUTIVE APARTMENTS	AL ROSTAMANI PEGEL	SUPPLY AND INSTALLATION OF ALUMINUM LOUVER	Feb-13
2016	DUBAI INTERNATIONAL AIRPORT TERMINAL 2 EXPANSION (PHASE III) AX 466 SUPERSTRUCTURE, MEP, SAS FINISHES & SITE WORKS	ARABTEC CONSTRUCTION LLC	FABRICATION, SUPPLY AND INSTALLATION OF MISC METAL WORKS	Sep-16
2016	CARGO MEGA TERMINAL (CIVIL AND BUILDING WORK) SP281 PACKAGE	ALEC ENGINEERING AND CONTRACTING LLC	FABRICATION, SUPPLY AND INSTALLATION OF MISC METAL WORKS	Sep-16
2016	DUBAI INTERNATIONAL AIRPORT EXPANSION (PHASE III) SP501 FORECOURT AND OFFICE REFURBISHMENT	ALEC ENGINEERING AND CONTRACTING LLC	FABRICATION, SUPPLY AND INSTALLATION OF MISC METAL WORKS	Sep-16
2016	DUBAI INTERNATIONAL AIRPORT EXPANSION (PHASE III) SP500 CONCOURSE 4 & ASSOCIATED PROJECTS (T1 UPGRADE)	ALEC ENGINEERING AND CONTRACTING LLC	FABRICATION, SUPPLY AND SHIPPING OF BALCONY HANDRAIL	Sep-16
2015	QATAR NATIONAL LIBRARY FOR QATAR FOUNDATION AT EDUCATION CITY	BROOKFIELD MULTIPLEX MEDGULF JV WLL	SUPPLY, FABRICATION AND INSTALLATION OF STAINLESS STEEL TOILET CUBICLES	Sep-15
2015	MSHEIREB DOWNTOWN DOHA - PHASE 1C- DOHALAND QATAR	BROOKFIELD MULTIPLEX MEDGULF JV WLL	SUPPLY, FABRICATION AND INSTALLATION OF STAINLESS STEEL HANDRAILS	YEAR 2015
2013	THE SUSTAINABLE CITY	JEET BUILDING CONTRACTING LLC	FABRICATION, SUPPLY AND INSTALLATION OF GALVANIZED POWDER COATED STEEL HANDRAILS	Jan-15
2015	ADNOC NEW CORPORATE HEADQUARTERS	ALEC ENGINEERING AND CONTRACTING LLC	DESIGN, MANUFACTURE, SUPPLY AND INSTALLATION OF MISC METAL WORKS	Jun-13
2015	T1 BRIDGE DEPARTURE WATERPROOFING & KERBSIDE WORKS	ALEC ENGINEERING AND CONTRACTING LLC	SUPPLY AND INSTALL OF BOLLARDS & TROLLEY BAYS	Dec-15
2015	DOHA FESTIVAL CITY - DOHA QATAR	GCC/ ALEC JOINT VENTURE	MISC METAL WORKS, DESMISE PIERS, BOLLARDS, COLUMN CLADDING, MEP BOXES, TROLLEY BAY PARKING RAILS	YEAR 2017

2015	CONSTRUCTION WORK WITHIN THE UAE MARTYR'S MEMORIAL PARK - AUH	ALEC ENGINEERING AND CONTRACTING LLC	MISC. METAL WORKS	Aug-15
2017	SUSTAINABLE CITY	JEET BUILDING CONTRACTING	SUPPLY AND INSTALLATION OF GALVANIZED STEEL HANDRAILS	Dec-17
2016	BVLGARI RESORT HOTEL & MARINA VILLAGE DUBAI	ALEC ENGINEERING AND CONTRACTING LLC	MISC METAL WORKS, CANOPY, BALUSTRADE, HANDRAILS, FLASHINGS AND CLADDING WORKS	Dec-17
2017	TN/ENM/1828	EMARAT	UNIT RATE CONTRACT FOR MAINTENANCE WORKS RELATED TO CLADDING AND SIGNAGE ITEMS	Dec-18
2018	TN/ENM/2208	EMARAT	REPLACEMENT OF ACRYLIC BLUE BAR, CLEAR ROUND ACRYLIC SHEET AND REPLACE EXISTING FLUORESCENT LIGHT FITTINGS WITH LED LIGHTING AT 5 NOS. EMARAT SERVICE STATIONS	YEAR 2019

LIST OF CURRENT PROJECTS

YEAR AWARDED	PROJECT	CLIENT	SCOPE OF WORK	COMPLETION DATE
2016	THE ADDRESS SKYVIEW	ALEC ENGINEERING AND CONTRACTING LLC	SUPPLY AND INSTALLATION OF METAL TRIMS / ANGLES, STAINLESS STEEL LIFT DOOR JAMBS AND VERTICAL CLADDIGN PROFILES and MT - 03, METAL TRIMS	ON - GOING
2016	MARINA GATE RESIDENCES MG-1	ALEC ENGINEERING AND CONTRACTING LLC	SUPPLY AND INSTALLATION OF MISC METAL WORKS	ON - GOING
2018-2019	DUBAI HILLS MALL	ALEC ENGINEERING AND CONTRACTING LLC	SUPPLY, FABRICATION AND INSTALLATION OF MISC. METAL WORKS (EARLY WORKS) SUPPLY, FABRICATION AND INSTALLATION OF INTERIOR/INTERNAL METAL WORKS	ON - GOING ON - GOING
	MARINA GATE 2	ALEC ENGINEERING AND CONTRACTING LLC	SUPPLY AND INSTALLATION OF MISC. METAL WORKS	ON - GOING
	EXPO 2020 COEX CAMPUS	ALEC ENGINEERING AND CONTRACTING LLC	SUPPLY AND INSTALLATION OF METAL HANDRAILS AND BALUSTRADES & GLAZED	ON - GOING
			SUPPLY AND INSTALLATION OF NON-STRUCTURAL METAL WORKS AT ARRIVAL PLAZA	ON - GOING
	EXPO 2020 MOBILITY PAVILION	ALEC ENGINEERING AND CONTRACTING LLC	SUPPLY AND INSTALLATION OF MISC. METAL WORKS	ON - GOING
	THE ADDRESS SKYVIEW	ALEC ENGINEERING AND CONTRACTING LLC	SUPPLY, DELIVERY AND INSTALLATION OF ID FITOUT PACKAGE OF SKY BRIDGE AND SKY COLLECTION APPARTMENTS	ON - GOING
	NAKHEEL MALL	UNEC	SUPPLY AND INSTALLATION OF PEDESTRIAN FENCE AND SS ATM ENCLOSURES	ON - GOING



تصاميم المعادن المتخصصة
Specialized Metal Design

THE POWER TO CREATE



SMDESIGN.ME

SPECIALIZED METAL DESIGN LLC | Address: 3 11a Street - Al quoz 2, Dubai, UAE | Telephone: 04 338 6036

ISO 9001:2015

E-mail: smdesign@eim.ae

info@smdesign.me

Web : www.smdesign.me