



Brightsun

ELECTRIC WATER HEATER

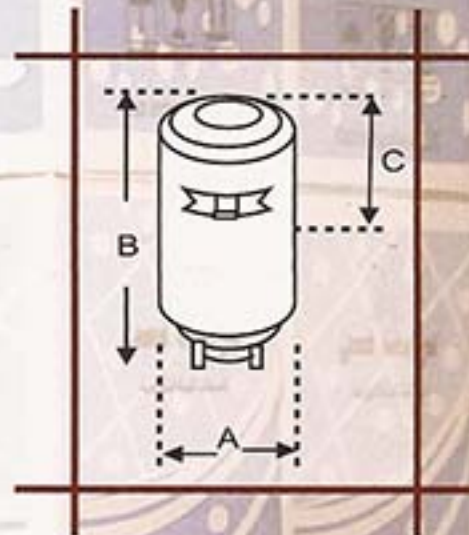


Emirates Conformity
Assessment Scheme

TECHNICAL DATA

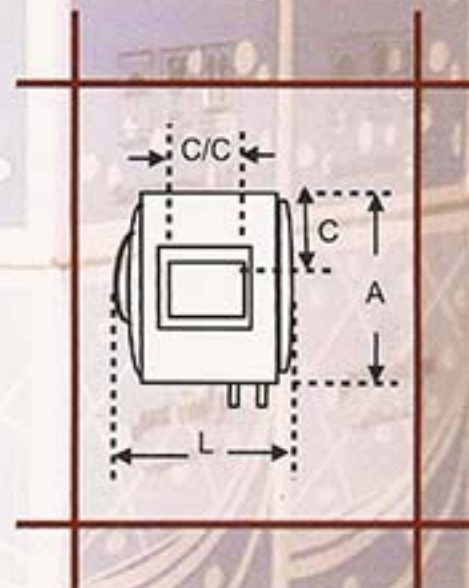
VERTICAL MODEL

MODEL	CAPACITY GALLONS	POWER AT 240V,60Hz	DIMENSIONS		
			DIAMETER (A) (mm)	HEIGHT (B) (mm)	CLAMP HEIGHT © (mm)
SB 12 G V	12	1200	390	530	145
SB 16 G V	16	1200	390	750	175
SB 20 G V	20	1500	390	835	175



HORIZONTAL MODEL

MODEL	CAPACITY GALLONS	POWER AT 240V,60Hz	DIMENSIONS			
			DIAMETER (A) (mm)	LENGTH (L) (mm)	CLAMP HEIGHT © (mm)	CLAMP CENTER (C/C) (mm)
SB 12 G	12	1200	390	530	220	265
SB 16 G	16	1200	390	750	145	365
SB 20 G	20	1500	390	835	145	465



PACKAGING & SHIPPING

CAPACITY (GALLONS)	VOLUME (CU.M)	GROSS WEIGHT (KG)	UNITS IN 40 FT HI CUBE CONTAINER
SB 12 G H	0.1056	14	560
SB 16 G H	0.1438	18	420
SB 20 G H	0.1703	22	337

Brightsun

Sun Industries For Electric Water Heater & Cooler, L.L.C

P.O. Box. 7293, Umm Al Quwain, U.A.E.

Tel:- 00971 6 7666248, Fax:- 00971 6 7666249

www.hotsunwaterheater.com

email:suninuaq @eim.ae



Hotsun

Glass Lined Electric Water Heater



Certified to International standards
IEC 60335-2-21 : 2002
IEC 60335-1 : 2001 + A1: 2004

SUN INDUSTRIES L.L.C.

For Electric Water Heater & Cooler

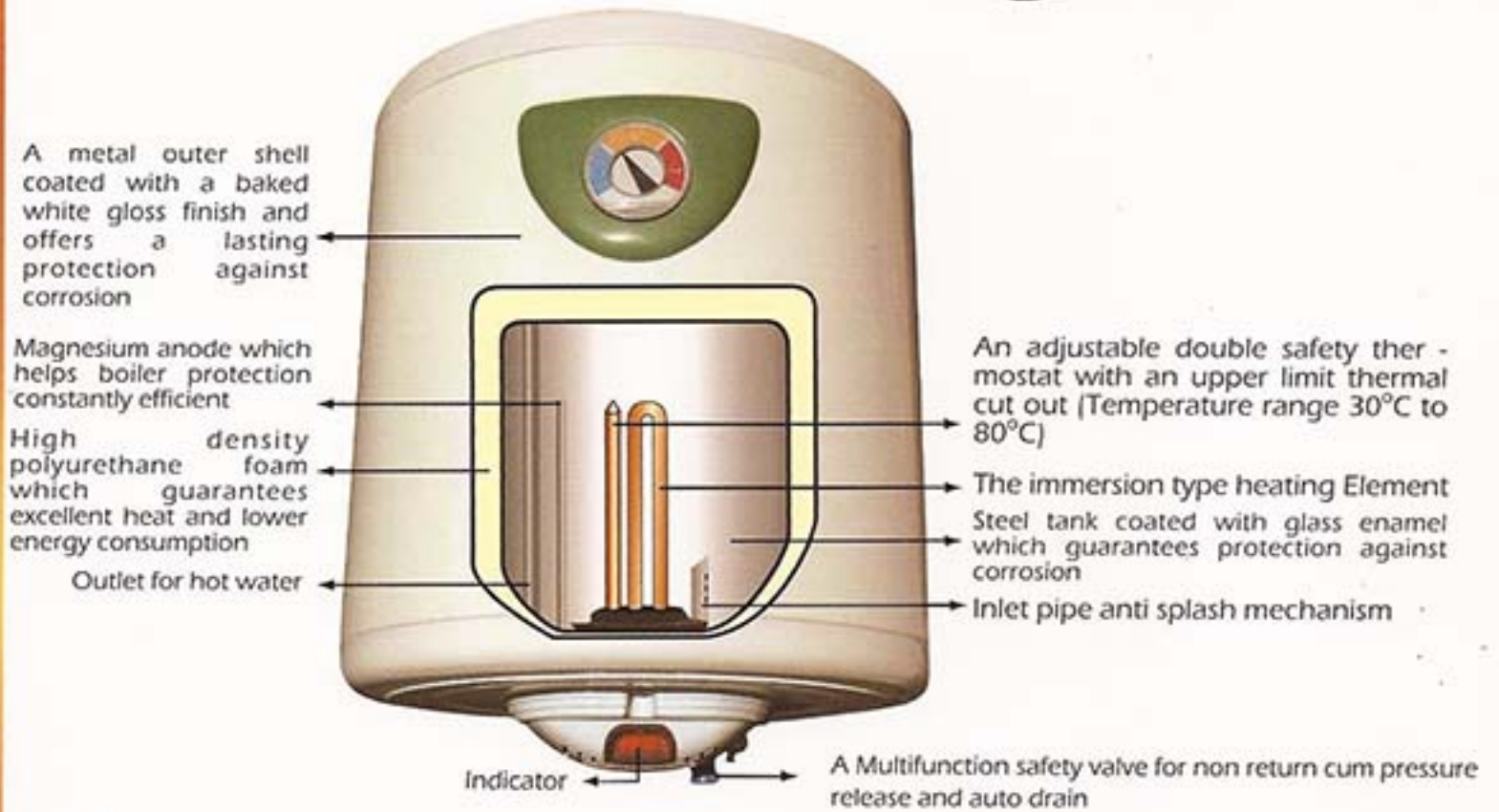
Tel.: +971-6-7666 248, Fax: +971-6-7666 249

Email: suninuaq@eim.ae



www.hotsunwaterheater.biz

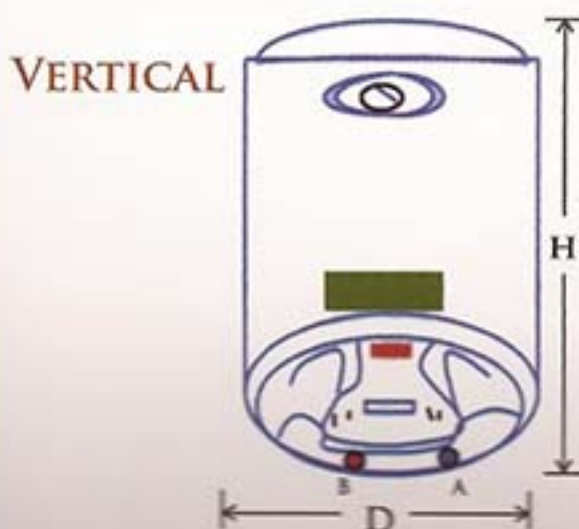
DOMESTIC WATER HEATERS WALL MOUNTED MODELS



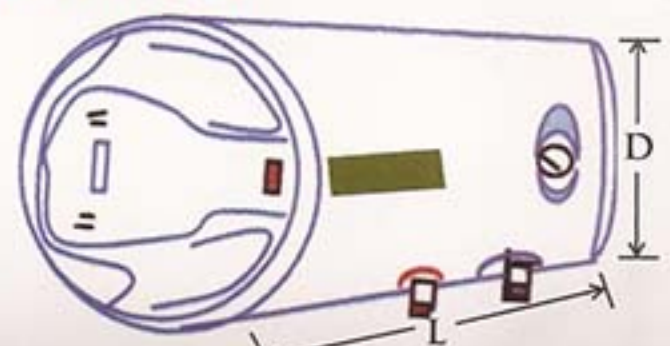
- The best quality one can get!
- The best service one can avail!
- The best price one can imagine!

TECHNICAL DATA (VERTICAL & HORIZONTAL)

Capacity (LTRS)	Height (H) Length (L) (MM)	Diameter (D) (MM)	Power (240V, 1Ph)	Max. working Pressure
10	340	320	1.5 KW	0.8 MPa
15	375	320	1.5 KW	0.8 MPa
20	410	320	1.5 KW	0.8 MPa
30	470	390	1.2 KW	0.8 MPa
50	530	440	1.2 KW	0.8 MPa
80	730	440	1.2 KW	0.8 MPa
100	840	440	1.5 KW	0.8 MPa
150	1335	440	3 KW	0.8 MPa
200	1570	440	3 KW	0.8 MPa



HORIZONTAL



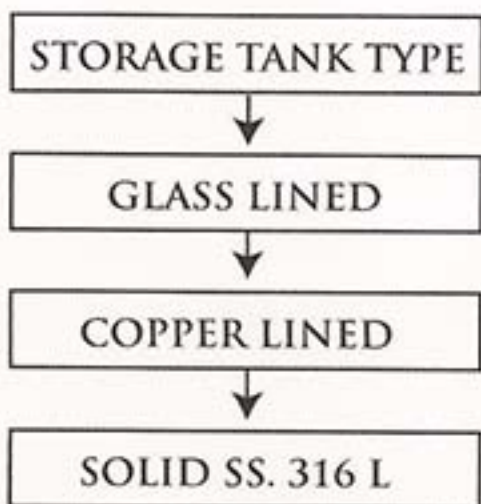
A - COLD WATER INLET - 1/2"
B - HOT WATER OUTLET - 1/2"

DOMESTIC & INDUSTRIAL FLOOR MOUNTED ELECTRIC STORAGE WATER HEATERS



PARTS

- A - INLET
- B - DRAIN
- C - OUTLET
- D - AIRVENT VALVE
- E - PRESSURE RELIEF VALVE (T&P)
- F - RETURN LINES
- G - CONTROL BOX
- H - MOUNTING LEG
- I - HEATER ON/OFF LIGHTS
- J - MANHOLE



CAPACITY - 200 LTS - 10000 LTS

TECHNICAL DATA (VERTICAL & HORIZONTAL)

Capacity Litres	Height (H) Length (L) MM	Mount	Diameter (D) (MM)	Power	Max.working Pressure
200	1570	VF / HF	440	3 KW	0.8 MPa
300	1400	VF / HF	640	6 KW	0.8 MPa
400	1830	VF / HF	640	6 KW	0.8 MPa
500	2100	VF / HF	640	9 KW	0.8 MPa
750	1950	VF / HF	855	12 KW	0.8 MPa
1000	1550	VF / HF	1160	18 KW	0.8 MPa
1500	2150	VF / HF	1160	24 KW	0.8 MPa
2000	2000	VF / HF	1240	36 KW	0.8 MPa
3000	2600	VF / HF	1300	60 KW	0.8 MPa
4000	2700	VF / HF	1600	84 KW	0.8 MPa
5000	3050	VF / HF	1650	108 KW	0.8 MPa
6000	3350	VF / HF	1750	132 KW	0.8 MPa
7000	3400	VF / HF	1850	156 KW	0.8 MPa
8000	3300	VF / HF	2000	180 KW	0.8 MPa
10000	3400	VF / HF	2250	204 KW	0.8 MPa

VF - VERTICAL FLOOR MOUNT

HF - HORIZONTAL FLOOR MOUNT

- ↗ RATED POWER CAN BE CUSTOMISED TO MATCH THE SPECIFICATIONS
- ↗ SIZES ABOVE 1000 LITRES COULD BE CUSTOMISED TO FIT THE SPACE AVAILABLE
- ↗ ANY OTHER ADDITIONAL FEATURES AND OR PLUMBING CONNECTIONS COULD BE PROVIDED TO MEET REQUIREMENTS

IDEAL FEATURES

INNER BOILER : CAPACITY OF UPTO 10,000 LTRS ARE AVAILABLE IN THE TECHNICAL DATA SHOWN.

INNER BOILER INSPECTION : PROVIDED INSPECTION (MAN DEVICE HOLES) ABOVE 2000 LTS.

INSULATION : HIGH DENSITY POLYURETHANE FOAM, WHICH GUARANTEES EXCELLENT HEAT AND LOWER ENERGY CONSUMPTION.

OUTER BODY : GALVANIZED STEEL JACKET WITH EPOXY BAKED ENAMEL FINISH.

CONTROL BOX : CONTAINS HEATING ELEMENTS & TEMPERATURE CONTROLLERS.

HEATING ELEMENT : COPPER / INCOLOY IMMERSION TYPE.

TEMPERATURE CONTROL: WITH DOUBLE SAFETY STEM TYPE THERMOSTAT / THERMOCOUPLE WITH DIGITAL TEMPERATURE CONTROLLER FOR HIGHER POWER RATINGS.

MAGNESIUM ANODE: AN OVERSIZED MAGNESIUM ANODE WHICH MAKES THE WATER HEATER'S PROTECTION CONSTANTLY EFFICIENT

SAFETY DEVICES: NRPR VALVE, AIRVENT VALVE (UP TO 200 LTRS) P.R. VALVE, TEMPERATURE & PRESSURE RELIEF VALVE (ABOVE 200 LTRS)

PLUMBING: INLET, OUTLET, RETURN AND DRAIN (BSP THREADED, S.S. PIPE UP TO 200 LTRS, FLANGE - ABOVE 2000 LTRS)

INDICATORS: HEATER ON/OFF LAMPS, PRESSURE GAUGE

MAINTENANCE: EASY ACCESS FOR MAINTENANCE EVERY TIME.

PACKAGING & SHIPPING

Capacity (LTRS)	Volume (Cub. M)	Gross Weight (Kg)	Units in 40 Feet Container
10	0.0505	6	1456
15	0.0535	7.5	1150
20	0.0564	8.5	1120
30	0.0820	11	550
50	0.1184	14	480
80	0.1608	19	360
100	0.1925	23	240