



TOP LINE

ELECTROMECHANICAL ENG. LLC
COMPLETE HVAC SOLUTION

Email: topline.elemech@gmail.com, info@toplineeme.com - Web site: www.toplineeme.com

Phone: +971 505391038, +971 72363871, Ras Al Khaimah, UAE



Saji Philipose

(Chief Executive Officer)

"We TOPLINE Electromechanical Eng. LLC Established in 2006 with a bunch of technically qualified workers. We have proudly served United Arab Emirates for over 12 years. Since from our start, Topline has provided HVAC in a wide variety of settings. By identifying a need in the market place for contracting services that could be 'bought' in, TOPLINE created the platform from which to develop the business further. Topline has a Commercial, Residential and Service Department. Our Residential and Commercial departments offer installations for new construction as well as for re-model/retrofit installations. TOPLINE has an extremely focused attitude towards the future and that is reflected in its commitment to developing skills within the business to shadow changes within the marketplace. "

INTRODUCTION

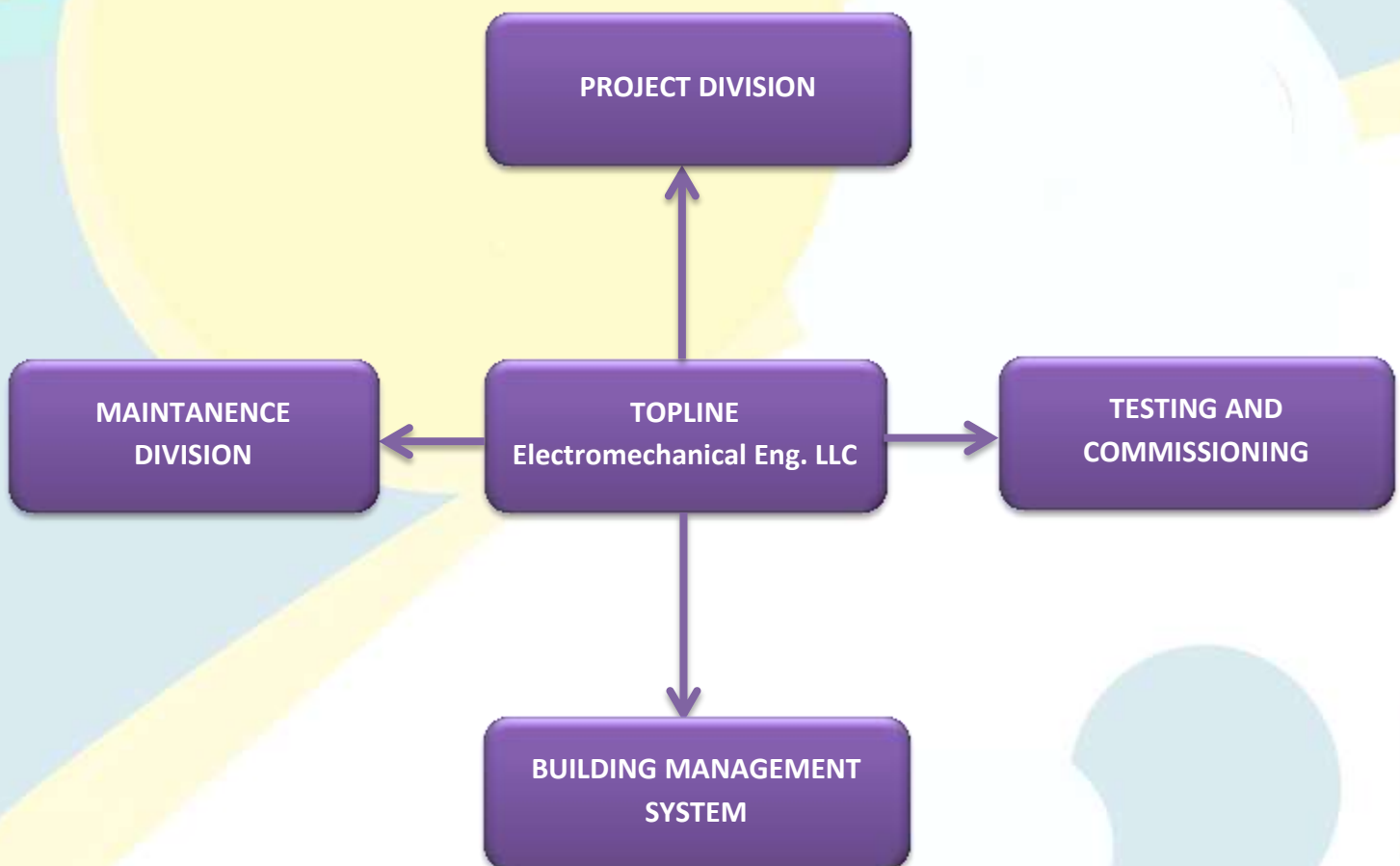
TOPLINE Electromechanical has been in business since 2006. We have proudly served United Arab Emirates for over 12 years. Since our start, Topline has provided HVAC in a wide variety of settings. Topline has a Commercial, Residential and Service Department. Our Residential and Commercial departments offer installations for new construction as well as for re-model/retrofit installations

The Company has established its reputation from years of experience in the Air conditioning, Ventilation, Refrigeration and Mechanical services and are recognized for providing quality, efficient and professional services to commercial and industrial sector throughout United Arab Emirates. Design and drafting, supply, installation and commissioning provide a structured work force and a quality partner for your HVAC projects, service and maintenance. TOPLINE Electromechanical department has provided installation of mechanical equipment for many of the past and present projects on United Arab Emirates.

TOPLINE diverse skill set merely comprises refrigeration mechanics, commissioning Technicians, BMS Technicians, air conditioning and duct installers, duct fabricators (both GI and PI) and well experienced 24x7 maintenance team. TOPLINE Electromechanical services is committed to health & safety, and all engineers are completely trained in this area. Our success is based on the continuous commitment that TOPLINE Electromechanical services give to all our clients by continuously updating and developing our services.

COMPANY STRUCTURE

TOPLINE Electromechanical Engineering LLC have a wide range of operational features. The Engineers used their enhanced knowledge & skills to build a business based on superb technical ability, outstanding customer service and a desire to build a business that would grow and succeed in the retail market place.



EXPERIENCE AND KNOWLEDGE

TOPLINE Electromechanical L.L.C is proud to offer the following engineering disciplines as part of its portfolio of services offered to our clients:

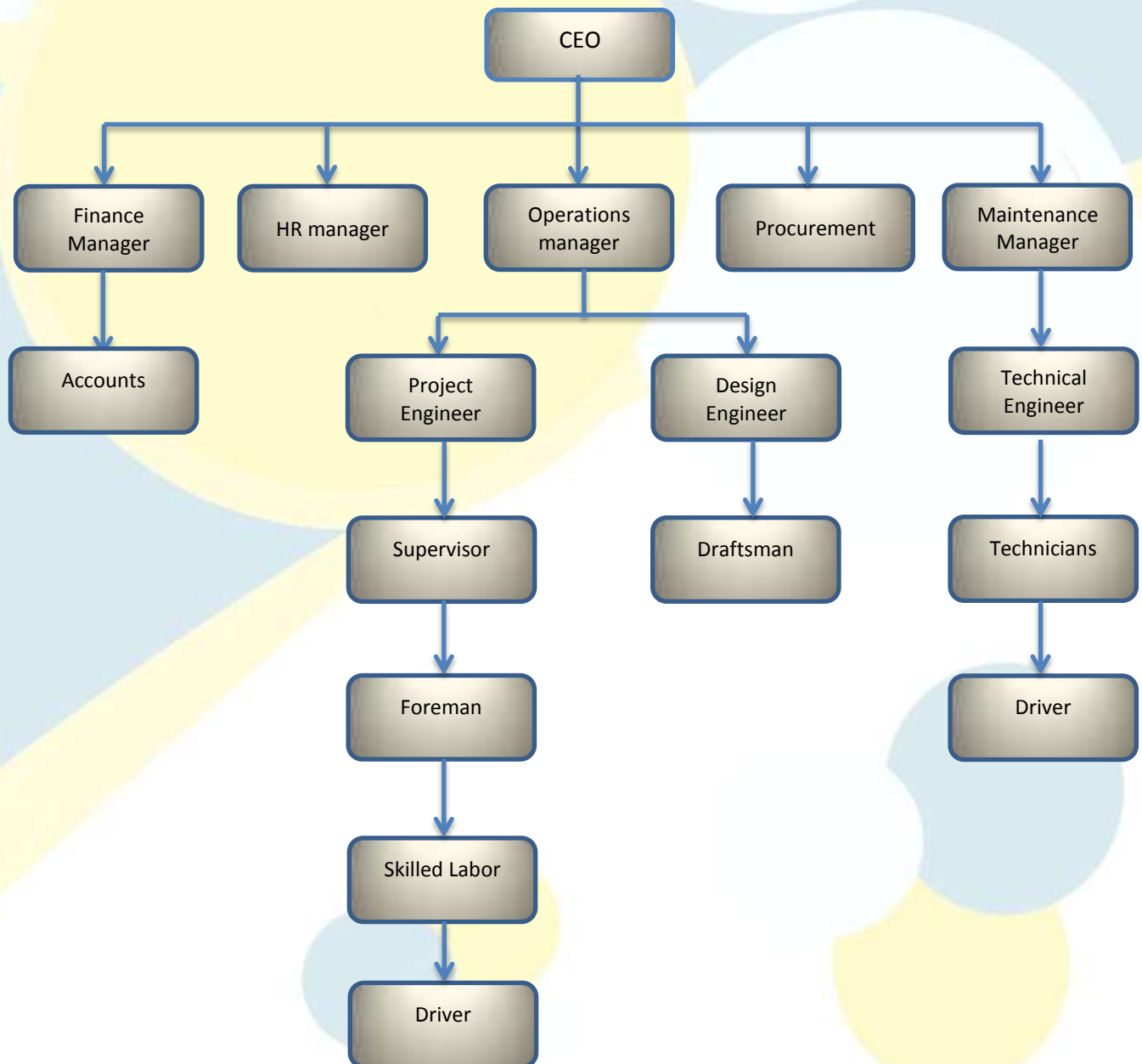
- Air Conditioning design & installation
- Ventilation & extraction design and installation
- Fabrication and Installation of Aluminum cladding.
- Duct fabrication and installation of both Pre Insulated and Galvanized Iron Duct.
- HVAC testing and Commissioning.
- Air balancing and Water balancing
- BMS System work.
- VRF/VRV and Chiller System
- HVAC Maintenance (AMC and CMC)
- Duct cleaning and services.



ORGANIZATION CHART

➤ Our mission is to build our reputation for integrity, excellence, and leadership as one of the finest Engineering and contracting organization by:

- Continuously improving the standards and quality of our services.
- Constantly striving to exceed each client's expectations.
- Maintaining our dedication to the highest moral principles.
- Providing a challenging and secure environment for our people.



AIR CONDITIONING

TOPLINE Electromechanical Eng. team has extensive experience and knowledge of all types of air conditioning systems, from single and multiple split systems to ducted air handlers, VRF/VRV and Chiller system installations.



From the initial concept, whether provided by the client or taken from a site survey, our design team will formulate the very best solution for the application. The creation of CAD drawings along with full design information allows our specialist installation teams to deliver a project to the exacting needs of the end user. With an acute focus on commissioning of the system, we are proud to handover fully completed installations on time and within budget.

TOPLINE team of air conditioning experts provide key project solutions to enable the fast, effective and reliable installation of any design requirement. The designated project manager will provide all required information from a Health & Safety perspective, ensuring that the project is delivered with minimum disruption to the owners and occupiers of the property.

WORKS DIVISION

- Mechanical air conditioning design and construct.
- Commercial, residential and industrial Fit out.
- Ducting design and installation.
- Duct fabrication of both PI and GI.
- Chilled water system design and installation etc.,

VENTILATION



TOPLINE is based on the successful combination of extensive industry experience and constant innovation. We combine a fresh image, new products and services with our 12 years of experience in the field of Heat Ventilation. This is our key to success and innovation derives from. We keep leveraging past experience to build the foundation for the future success.

We, the Advance Ventilation Pvt. Limited work through the first principles of Science & Engineering; and therefore the Environmental Control systems implemented by us are always complete and a successful installation. We specialize in the execution of system installations with customized features and complying with the specialized requirement specifications.

The TOPLINE design team includes qualified computer aided draughtsman to look at the design, create working and 'as fitted' drawings and to provide layout and isometric drawings as may be required by the project in hand.

WORK DIVISION

- Design ventilation system including fan and duct
- Kitchen and Toilet Exhaust.
- Fresh air and Makeup air system.
- Smoke fan and Duct system

BUILDING MANAGEMENT SYSTEM

BMS is most commonly used for large buildings, as they serve as a critical component to managing energy demand. Systems linked to a BMS typically represent 40% of a building's energy usage; if lighting is included, this number approaches 70%.

TOPLINE's BMS Division has been involved in successfully implementing integrated automation solutions in the Government and Private sectors. TOPLINE's core strength is in offering comprehensive, innovative solutions in Intelligent Automation and Control Systems.

Benchmarking the best level of quality standards, TOPLINE team assure you cost-effective and scalable integration of all your control, monitoring, and operational needs



MAINTENANCE

TOPLINE Electromechanical Eng. team provides a 24/7 emergency breakdown service, offering clients up to a 4 hour response from the time of call receipt at Ras Al Khaima and for other emirates 24 hour response from the time of call receipt. The Technical teams are all operating from TOPLINE vehicles that carry all essential tools and generic spares. This enables the Technicians to work to the very best of their ability whilst meeting the requirements of the customer's contract



The Technicians are managed by the administration team based at Ras Al Khaima, who select the most appropriate engineer according to location and skills ability for the problem at hand. The administration team also manages the adherence to client, ensuring that technical needs are met with a reassuring confidence. The flexible approach of the department allows for any 'adjustment' to the client's needs should they arise.

WORK DIVISION

- DX unit Maintenance and Service.
- Chiller Maintenance and Service.
- Duct cleaning and modification.
- Commercial, residential and industrial HVAC Maintenance.
- AMC and CMC.



PERSONNEL

The most important part of any business is its staff. From the very early days of the company, TOPLINE employed staff not just on the basis of meeting the needs of day-to-day demands of business but, with vision and foresight, TOPLINE employed staff which allowed the business to expand in a controlled manner. TOPLINE Electromechanical Eng. is proud to have grown the business in this way and, in turn, it has allowed staff to grow and flourish with the business.

TOPLINE is proud of its commitment to training and ongoing career advancement. With a comprehensive training matrix kept to monitor courses taken and qualifications achieved by staff at all levels of the business.

TOPLINE has a very simple operational structure, meaning that TOPLINE can make decisions in a timely fashion, so operationally any possible delays are kept to an absolute minimum allowing the focus to remain firmly on the job at hand and, more importantly, to deliver the completed project to the client on time, within budget and to a very high standard.



QUALITY CONTROL

TOPLINE Quality Engineers Provides leadership and is responsible for overseeing day – to - day test preparation and execution activities, including resource scheduling, team communications and status reporting as well as promoting and overseeing use of established best practices, policies, and procedures. Liaison between Test Team and the Business Stakeholder



TOPLINE Test team is responsible for validating the test basis, designing and developing test cases and data sets, executing tests, and reporting and diagnosing defects as well as quality assurance of the tests cases and test execution.

HEALTH AND SAFETY



TOPLINE Safety Officer is responsible for monitoring and assessing hazardous and unsafe situations and developing measures to assure personnel safety. The Safety Officer will correct unsafe acts or conditions through the regular line of authority, although the Safety Officer may exercise emergency authority to prevent or stop unsafe acts when immediate action is required.

They will maintains awareness of active and developing situations and ensures the Site Safety and Health Plan is prepared and implemented. Ensure preparation and implementation of Site Safety and Health Plan.

FUTURE DEVELOPMENTS

TOPLINE Electromechanical Eng. LLC is very Proud of its heritage and of the customers who have enjoyed the services and skills that the company have provided to them over the years. TOPLINE

has an extremely focused attitude towards the future and that is reflected in its commitment to developing skills within the business to shadow changes within the marketplace. TOPLINE is always looking at new technologies as they enter the market place allowing them to communicate effectively with customers and offer them best possible advice for their own estates.

TOPLINE continues to develop the unique range of packaged refrigeration solutions which it manufactures to provide the very best in engineering practice and sensible thinking towards noise impact and containment, space planning constraints and the key driver of reduced energy consumption. TOPLINE aspires to be the very best in the market sectors in which it operates and will always push the envelope to achieve greater things as time moves forward.



OUR MAJOR PROJECT

- Manazil Tower-06 Hotel and Apartment, Sharjah.
- G+4 Labor Accommodation, Jebel Ali.
- Al Arab Center, RAK, UAE.
- Yasmin Tower, Ajman.
- Civil Defense and Police Station, Ras Al Khaimah (BMS Work).
- Gate Avenue , Dubai (BMS Work).
- Opera grand, Dubai (BMS work).
- Hayath Hotel, Dubai (BMS Work)
- Sheik Khalifa Hospital, Umm Al Quwain (Testing And Commissioning).
- Lulu Hypermarket, Ras Al Khaimah (Air Balancing and Water Balancing).
- Emirates Head Quarters, Dubai.
- The Dubai Mall, Perfumery Area, Dubai.
- VOX Cinema, Sharjah.
- Paris Gallery, Ras Al Khaimah.
- Shifa Al Jazeera Pharmacy, Ajman.
- American University, Ras Al Khaimah.
- Magic planet, Al Naeem Mall, Ras Al Khaimah.
- Al Hooth Hypermarket, Ras Al Khaimah.
- Mauzan Factory, Al Ain.
- Dubai Heights School, Dubai.
- One Tower, Dubai.
- Hilton Resort and Spa, Ras Al Khaimah.
- Pwerbar Gulf, Al Ghail (Exhaust System Work).
- Idealism Industries, Ras Al Khaimah (AMC).
- G+12+R Customs Building, RAK, UAE (AMC).
- G+15+R Naeem Tower – 3, RAK, UAE (AMC).
- Al Rostamani Pegal, Dubai (Maintenance) **etc.,**

CLIENT LIST





-  Ras Al Khaimah, UAE
-  PO BOX: 13230
-  +971 50539 1038, +971 72363871
-  +971 55 711 3177
-  topline.elimech@gmail.com
info@toplineeme.com
-  www.toplineeme.com