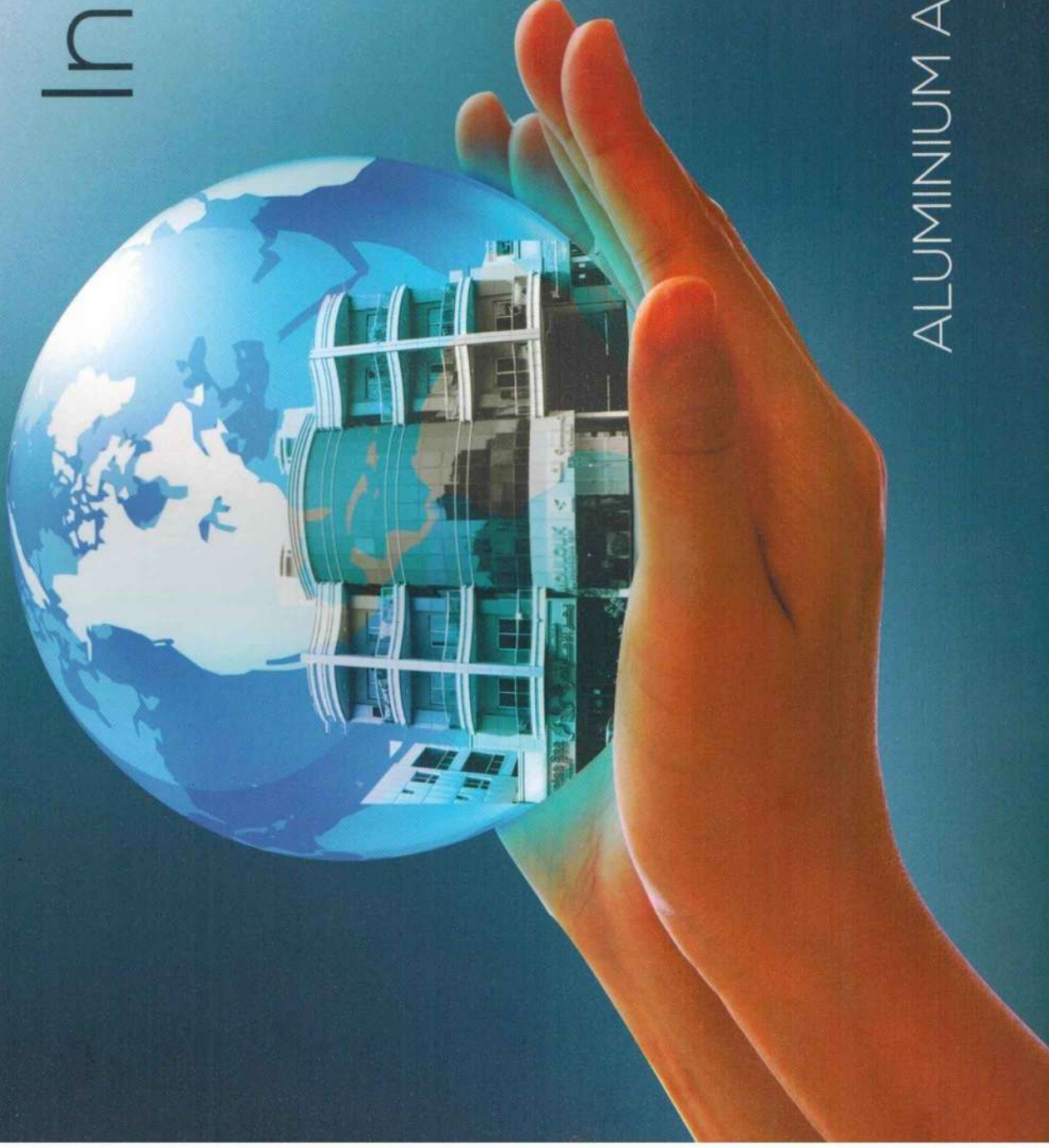


# A World of Innovation



**AL BARRAK**  
ALUMINIUM AND STEEL WORKS

# INDEX

<b>Sl No.</b>	<b>List</b>	<b>Page No.</b>
1	About Us - Introduction	1
2	Company Profile	3
3	Company Structure	6
4	Vision & Mission	8
5	Products & Services	10
6	Quality policy	13
7	Health & Safety Policy	16
8	Associates	19
9	Machineries & Equipment	21
10	Project List	23
11	Contracts & Agreements	25
12	Our Gallery	37
13	Contact Us	61
14	Trade License	63





## **INTRODUCTION**

Al Barrak aluminium and Steel works, was found in the year of 1994 in the Emirate of Ajman-UAE, with a mission to cater the increasing demand for Aluminium, Glass and Steel Products and services in the UAE Market. Ever since the inception, our commitment, and the ability to understanding the actual need of the customer and deliver the right products which suites the budget of the customer without compromising on the quality, we were able to keep our graph growing upward even in when the recession struck the UAE market. Over the last Twenty-two years we have grown to become one of the most sought after company in the field of Architectural metal and Glass work.

Al Barrak Aluminium and Steel Works is a specialized contractor for all kind of Architectural metal and glass products. Our services include but not limited to design, engineering, procurement, production, installation and maintenance of various kind of architectural glass and aluminium products. We provide all kind of Building envelop solutions with Aluminium, Glass and Steel products namely, Facades, Curtain Wall, Spider Glazing, skylights, Aluminium Composite Panel Cladding, Hand rails, Various type of Structural Fabrications, MS & SS Handrails, Pressure Vessels and Weighing Bridge etc.

Key Factor in our success in our commitment to excel in performance and service. At Al Barrak Aluminium and Steel all products are manufactured and installed to the highest standards. We work hand in hand with many of the consultants and clients from the design stage of the projects itself whereby helping them to achieve the functionality and aesthetics they require for their prestigious projects. All products are designed and manufactured in accordance with proven principles and to high technical standards.



**company profile**

## **COMPANY PROFILE**

Al Barrak Aluminium and Steel is a company registered in the Emirates of Ajman-United Arab Emirates. We have started our operations with a very vast experience and backing from our parent company Al Barrak Steel. Within the short span of Twenty years, we have become one of the very stable and fast growing organizations in UAE.

We have strategically placed our Factory and Setup in one of the most convenient place of Ajman, in New Industrial Area and easily accessible to the Sh. Mohammed Bin Zayed road. With our manufacturing unit located in this strategic place of UAE, we are able to deliver our products and service in a faster way and reach to our customers more effectively. Over the years we have been serving the customers in all part of the UAE from Abu Dhabi upto the northern Emirate of Ras Al Khaimah.

At Al Barrak Aluminium and Steel, we believed that people are our strength and back bone. As we are committed to satisfy our customers and clients with best quality products, we have employed some of the highly experienced and talented professionals to our crew. The management team is professional, with many years of proven track record and experience in the Gulf market in the field of architectural Aluminium, Glass and Steel industry. Our fabrication and site installation staff are well trained and experienced professionals. Most of our staff members have years of experience in fabrication, production and installation.

Al Barrak Aluminium and Steel undertake turnkey architectural project from villas to commercial complexes, schools and shopping malls, residential building row house, substations etc. we are the approved sub contractor for DEWA and FEWA substations across UAE. Our services start from the tendering stage of the project we work together with main contractors for giving competitive prices and technical submissions for their tender bids. Our in-house estimation team can give very cost effective and technically sound proposals for your projects. Upon awarding the project, our technical and design team take care of all the design and engineering requirements of the project as per the specifications and highest technical standards. Detailed shop drawings, structural design calculations and analysis etc. are prepared prior to the production stage for the approval of the consultant and client.

We source most of our raw materials from the leading suppliers in the Local Market. As per the project requirements we source the specified materials from international market as well. We partner with most of the leading suppliers for high performance glasses, hardware and accessories and aluminium and steel profiles. During the procurement stage itself we take at most care to ensure that the raw materials supplied to us for production are meeting the standards and specifications. Procurements, production and project management is controlled and monitored by experienced project manager and project engineers.

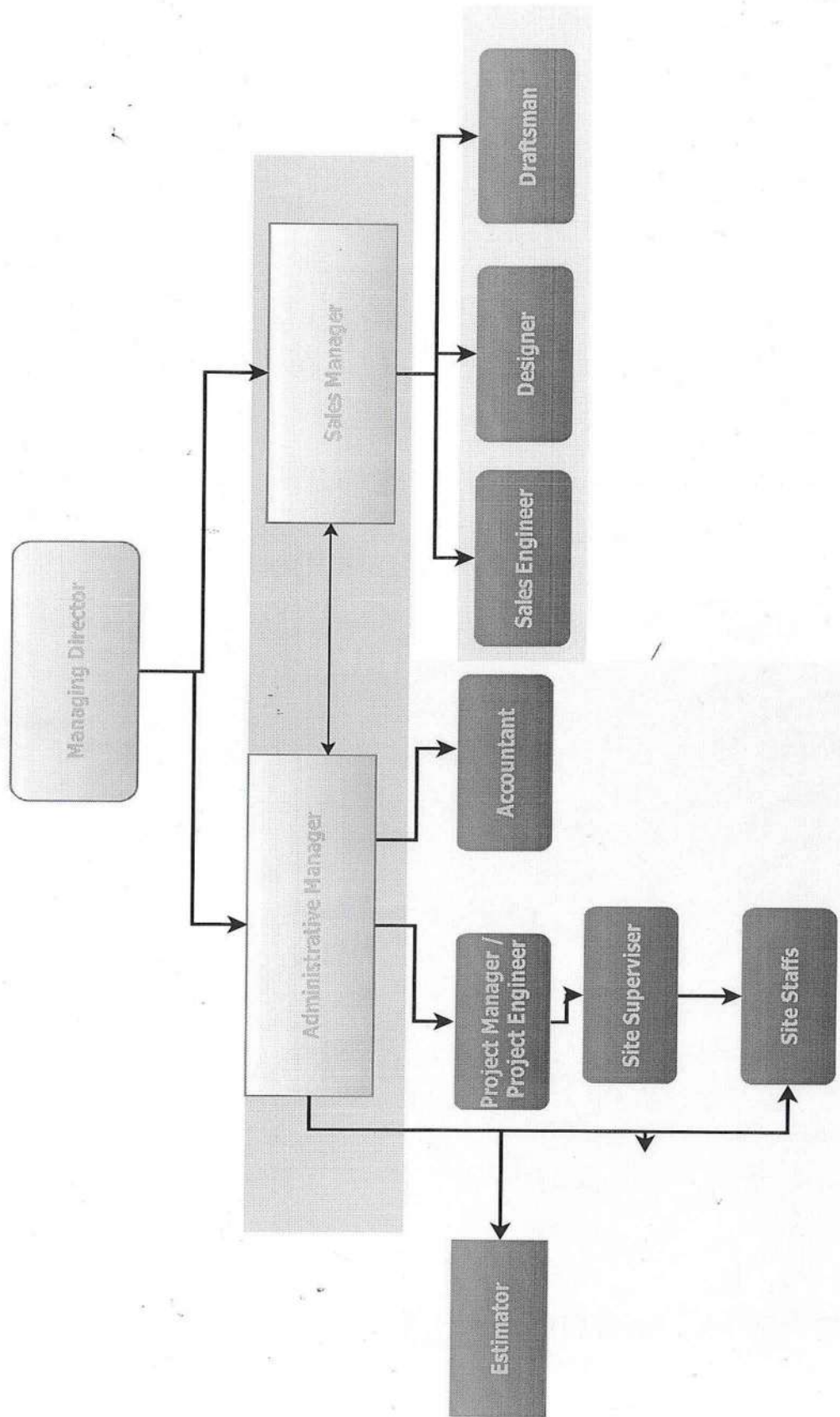
With the help of our latest machineries and technically sound team we are able to meet any deadlines of the projects with complete satisfaction of the customers.



# COMPANY STRUCTURE



# COMPANY STRUCTURE





## VISION AND MISSION



### Our Vision:-

Our vision is to become one of the leading companies in the field of architectural Aluminium, Glass and Steel works by inspiring our employees to be the best they can be and continuously engaging the with modern machineries and technologies in anticipation to the needs and satisfaction of the customers. Our aim is to be one among the specified subcontractors in the field of our operations by the top consultants and clients in the region and to be known and remembered by our quality of work and services.

### Our Mission:-

Our Mission is to exceed the client's expectations in quality, timely delivery and service, cost effectiveness by continuously updating the technology and constantly improving the client interactions in a manner that distinguishes us as the bench mark for excellence and become an important link in the field of architectural aluminium and glass industry in the region. We strive towards our vision through continuous interactions with the client and customers and improving our system and processes to match with the expectations of the customers and to match with the industry standards.







## **PRODUCTS AND SERVICES**

We design, Engineer, Fabricate, Supply and Install the following products but not limited to

- CURTAIN WALL – ( conventional Curtain Wall and Structural Glazed Curtain Wall)
- ALUMINIUM DOORS (Thermal break and Non-thermal break)
- WINDOWS (Thermal break and Non-thermal break)
  - Sliding Windows
  - Hinged Windows
  - Tilt and Turn Windows
  - Fixed Windows
- FRAMELESS GLASS PARTITIONS
- FRAMELESS GLASS DOORS
- SLIDING DOORS
- AUTOMATIC SLIDING DOORS
- SHOP FRONTS



- SPIDER GLAZINGS AND POINT FIXED GLAZINGS
- GLASS WALL CLADDING
- BACK PAINTED GLASS
- DESIGN GLASS WORKS, ETCHED GLASS, STAINED GLASS, FUSED GLASS
- SHOWER PARTITIONS AND SHOWER DOORS
- SKYLIGHTS AND GLAZED DOMES
- HAND RAILING-STAIR CASE AND BALCONY
- STAINLESS STEEL HAND RAILINGS
- LOUVERS AND CLAUSTRA
- ALUMINIUM COMPOSITE PANEL CLADDING
- CANOPY





## **QUALITY POLICY**

### **QUALITY – THE CORNERSTONE OF CONTINUING SUCCESS**

To ensure that all the material used by Al Barrak Aluminium and Steel meet international quality standards and full fill the design, finish and performance requirements of the projects in question, the company following a strict Quality Control Policy at all stages of operation, from procurement of material, work preparation through to site installation.

All departments are managed by industry professional with proven track records in their relative fields. All personnel within the company are actively involved in the formulation, implementation and monitoring of the Quality Management System, thus ensuring customer satisfaction and enhancing the quality of life for all employees. The latest technology available in order to produce the highest quality merchandise on time and at competitive prices, a team oriented approach that is managed with an emphasis on responsibility.

While projects are being executed according to the high standards required, experienced site management staff simultaneously ensure that appropriate access equipment and purpose-built mechanical handling devices are used on-site to install materials both safely and efficiently to meet programme requirements.

It is the objective of Al Barrak Aluminium and Steel works to satisfy the quality and delivery requirements of our customers at competitive prices in a timely manner. We measure our

performance in meeting our customer requirements and work with them in order to continuously improve the service that we provide. The main focus of our activities is the provision of general engineering construction services.

In particular our management will:

- Monitor client satisfaction and set objectives for continuous improvement.
- Analyze the causes of any complaint and take appropriate action to prevent recurrence.
- Ensure the availability and competence of the support resources for the core processes.
- Provide the necessary work environment to ensure the wellbeing of our employees and visitors.
- Encourage all employees to identify problems and make suggestions to improve all aspects of our working practices.
- Ensure that the company complies with all necessary regulatory and legal requirements.

The achievement of our quality objectives and continual improvement is fundamental to all activities carried out within our company and be practiced by all employees as an integral part of their daily work.



# Health & Safety





## HEALTH AND SAFETY POLICY

Al Barrak Aluminium and Steel firmly believes that the company will install and develop a health and safety culture across the organization, whereby a commitment to the prevention of both injury to employees, subcontractors or persons affected by our activities and incidents of damage or loss of property, plant and equipment will improve the overall performance of the business.

- Implement an effective Health and Safety Management System to ensure all operations are carried out in accordance with Local, International or Customer Specific Health & Safety Practice.
- Through appropriate delegation of authority, ensure responsibility for Health and Safety at all levels within the Organization.
- Provide effective training and development for all employees to improve their capability to identify and manage the risk normally associated with the nature of our work.
- Maintain credible and accurate records of all incidents and occurrences, which can be used to produce meaningful statistics against which continuous improvement initiatives can be measured.

- Al Barrak Aluminium and Steel Works' employees are in strict compliance with the UAE health and Safety legislation and current ministerial orders, including Technical Guidelines issued by the Environmental, Protection and Safety Section (EPSS).

Policy Objectives:

Al Barrak Aluminium and Steel will, so far as is reasonably practicable;

1. Establish safe and environmentally acceptable working practices throughout the Company's operations.
2. Provide a safe and healthy workplace and avoid damage to property and the environment.
3. Prevent all injuries at the workplace.
4. Develop a high degree of safety and environmental awareness amongst all personnel.
5. Provide employees with the required skills and support to meet the company's commitment to health, safety and the environment.
6. Ensure that contractors working on the Company's behalf implement comparable standards.
7. Seek continual improvement in our efficient use of environmentally friendly products, thereby minimizing emission and reducing waste.
8. Provide competent advice to all management on health, safety and environmental issues and the means to monitor performance.
9. Assess risk, evaluate and monitor as an ongoing process.



## ASSOCIATES

We deal with most of the Local and International Aluminium, Glass and Accessories manufactures of vendors to outsource the raw materials required for various projects.

Following are some of our business associates...

### ALUMINIUM PROFILES

- Al Ghurair (Gulf Extrusions)
- Al Hamad Extrusion
- Elite Extrusion
- White Aluminium
- Emirates extrusion
- Al Jaber Extrusion

### GLASS AND MIRROR

- Gloverbel-Germany
- Pilkington-USA
- Gurdian Glass
- Emirates Glass

### ALUMINIUM COMPOSITE PANEL (ACP)

- Alubond – USA
- Aluplex
- Alucopanel

### HARDWARE AND ACCESSORIES

- Dorma (Germany)
- GEZE (Germany)
- Savio (Italy)
- Stanley
- Celine



# MACHINERIES AND MANUFACTURING FACILITIES



## **MACHINERIES AND EQUIPEMENTS**

- Glass straight line edge polishing machines
- Automatic glass sand blasting machine
- Design plotter machine
- Glass drilling machine
- Glass beveling machine
- Automatic rotating tables
- Double belt machines
- Pneumatic aluminium cutting machine
- Aluminium composite panel cladding machine
- Aluminium cutting machine
- Aluminium copy router
- Screw compressor
- Air compressors
- End milling machines
- Drilling machines
- Generators
- Hand tools

## **VEHICLES**

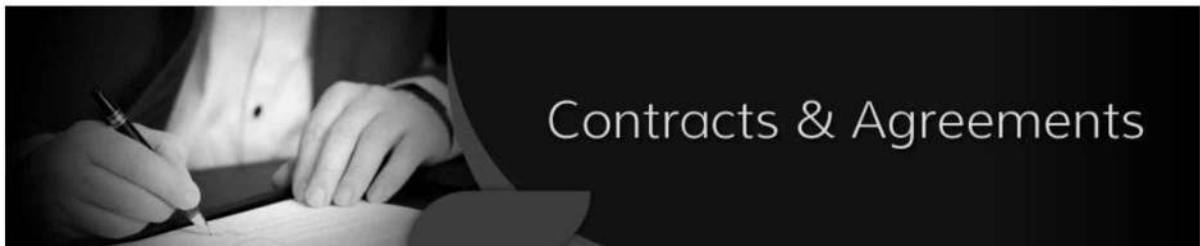
- |                    |   |       |
|--------------------|---|-------|
| • Toyota – Prado   | : | 1 No. |
| • Toyota – Corolla | : | 1 No. |
| • Nissan – Sunny   | : | 1 No. |
| • Mini Van         | : | 1 No. |
| • Pickup           | : | 2 No. |



# PROJECT LIST

## LATEST PROJECTS LIST

Sl No.	Project	Location	Contractor / Consultant
1	G+1 villa	Muhaisnah	Al Buhaira Contracting LLC
2	G+7 Residential Building	Al Raffa	Al Buhaira Contracting LLC
3	G+6 Residential Building	Al Warqa	Al Buhaira Contracting LLC
4	G+3 Building	Deira	Al Buhaira Contracting LLC
5	G+4 Labour camp	Ras Al Khor	Al Buhaira Contracting LLC
6	103 Nos, G+1 Villa	Dubai Golf Club	Herald Contracting LLC
7	6 Nos., G+1 villa	Dubailand	Al Buhaira Contracting LLC
8	G+1 villa	Muhaisnah	AKAD Construction
9	G+1 villa	Al Quoz	Royal Elite Bldg Contracting
10	Brethren Church Bldg	Abudhabi	-
11	G+M Office	AbhuShagara	Hilal Bldg Contracting
12	G+1 Villa	Al Seyouh	Hunna Al Madina Bldg Contracting
13	G+1 Villa	Al Mizr	Al Buhaira Contracting LLC
14	G+2 villa	Al Nouf	Hunna Al Madina Bldg Contracting
15	Rostamani Hotel	Jadaf	Al Arif Contracting LLC
16	Rostamani Hotel	Barsha	Al Arif Contracting LLC
17	G+1 villa	Rahmaniya	Al Basfoor Construction LLC
18	G+M warehouse & office	JAFZA	Multilink Contracting LLC
19	G+M warehouse & office, ACCURO	DIP	Civil Matrix Contracting LLC
20	G+1 warehouse & office, ORCHID	DIP	Civil Matrix Contracting LLC
21	G+M warehouse & office, LP FLEX	DIC	Civil Matrix Contracting LLC
22	Warehouse & Office	JAFZA	ACAD Construction
23	Hyatt Regency	Dubai Health care City	Interior International FZE
24	Abu Dhabi Indian School	Abu Dhabi	Chicago Maintenance and Construction LLC
25	Warehouse & Office, Pure Helium Gulf – Air Liquid	JAFZA	Pravarthi Building Contracting LLC



## Contracts & Agreements



**Turner**

Arabian Construction Company  
 Tel: 971-4-3455534  
 Fax: 971-4-3460622

DATE: 25/10/2016

DATE	A	I	R	F
1				
2				
3				
4				
5				
6				
7				
8				
9				
10				
11				
12				
13				
14				
15				
16				
17				
18				
19				
20				
21				
22				
23				
24				
25				
26				
27				
28				
29				
30				
31				
32				
33				
34				
35				
36				
37				
38				
39				
40				
41				
42				
43				
44				
45				
46				
47				
48				
49				
50				
51				
52				
53				
54				
55				
56				
57				
58				
59				
60				
61				
62				
63				
64				
65				
66				
67				
68				
69				
70				
71				
72				
73				
74				
75				
76				
77				
78				
79				
80				
81				
82				
83				
84				
85				
86				
87				
88				
89				
90				
91				
92				
93				
94				
95				
96				
97				
98				
99				
100				

**Dewan**  
 Architects  
 Engineers

**ACC**  
 ARABIAN CONSTRUCTION CO.

**CONSTRUCTION SUBMITTALS**

**PROJECT:** The Address Residence Fountain View  
**PACKAGE:** Development  
**TO:** Dewan Al Emara Architects & Engineers  
**ATTN:** Khalid Al Shalah  
**SUBJECT:** Material Technical Submittal for Non Fire Rated Aluminum Door at Back of House Areas at FV3 Level 16 & Above (Please Refer to Attached Drawings for Location) - Reply to Engineer's Comments

**DATE:** 24 Oct, 2016  
**REF:** TAR-FV-MW-SUB-ACC-13273  
**REV:** 2  
**Internal Ref No:** *[Signature]*

WE ARE SENDING:		SUBMITTED FOR:		SUBMITTAL STATUS CODE:	
<input type="checkbox"/>	Drawings	<input checked="" type="checkbox"/>	Approval	A - Approved	C - Revise and Resubmit
<input checked="" type="checkbox"/>	Material / Sample	<input type="checkbox"/>		B - Approved as Noted	D - For Information
<input type="checkbox"/>	Method Statement	<input type="checkbox"/>			
<input type="checkbox"/>	Inspection / Test	<input type="checkbox"/>			
<input type="checkbox"/>	Health & Safety	<input type="checkbox"/>			
<input type="checkbox"/>	Quality	<input type="checkbox"/>			
<input type="checkbox"/>	O&M Manuals	<input type="checkbox"/>			
<input type="checkbox"/>	Documents (Others)	<input checked="" type="checkbox"/>	Due Date: 31/10/2016		



ITEM	DOCUMENT NO	REV.	DESCRIPTION	TYPE	STATUS
1	FV3-III-MC-MT-ID-00112	R02	Material Technical Submittal for Non Fire Rated Aluminum Door at Back of House Areas at FV3 Level 16 & Above (Please Refer to Attached Drawings for Location) - Reply to Engineer's Comments	MAT	B

Signed: *[Signature]*  
 RICHARD IAIN BURTONSHAW -

Sent Date: 24/10/16

Consultant General Comments:

**Note:** Correction or comments made relative to submittals during this review DO NOT relieve the contractor from compliance with the requirements of drawings and specifications. This check is only for review of general conformance with design concept of the project.

Signed: *[Signature]*  
 Khalid Al Shalah - Chief R  
 PM/Employer General Co



*Start Submission  
 of Drawings  
 for Doors.  
 Imhiyar to  
 send sub contractor  
 details*

INTERIORS INTERNATIONAL		
Project: ADDRESS RESIDENCE FOUNTAIN VIEWS		
Date: 26-11-2016 TN # 377		
Designation	Action	Info
Sr. Project Manager		✓
Construction Manager		
Design Manager		
Drawing Officer	✓	
Drawing Coordinator	✓	
Procurement Eng.	✓	
Q.S.		✓
Plus		
Excel		
Imhiyar	✓	



**Turner**

Arabian Construction Company  
 Tel: 971-4-3455534  
 Fax: 971-4-3460622

POSITION REVIEW					
DATE:	25/10/2016				
Distribution		A	I	R	F
C.E					
RE (FV1)					
RE (FV2)					
RE (FV3)					
RE (FV4)					
Arch. Coordinate					
MEP Coordinate					
ST (FV1)					
ST (FV2)					
ST (FV3)					
ST (FV4)					
Struct Eng (FV1)					
Struct Eng (FV2)					
Struct Eng (FV3)					
Struct Eng (FV4)					
Mech Eng (FV1)					
Mech Eng (FV2)					
Mech Eng (FV3)					
Mech Eng (FV4)					
Elect Eng (FV1)					
Elect Eng (FV2)					
Elect Eng (FV3)					
Elect Eng (FV4)					
Others					

**Dewan**  
 Architects +  
 Engineers

**ACC**  
 ARABIAN CONSTRUCTION CO.

**CONSTRUCTION SUBMITTALS**

**PROJECT:** The Address Residence Fountain View  
**PACKAGE:** Main Works

**DATE:** 24 Oct, 2016  
**REF:** TAR-FV-MW-SUB-ACC-13273  
**REV:** 2  
**Internal**  
**Ref No:**

**TO:** Dewan Al Emara Architects & Engineers

**ATTN:** Khalid Al Shalah

**SUBJECT:** Material Technical Submittal for Non Fire Rated Aluminium Door at Back of House Areas at FV3 Level 16 & Above (Please Refer to Attached Drawings for Location) - Reply to Engineer's Comments

WE ARE SENDING:		SUBMITTED FOR:		SUBMITTAL STATUS CODE:	
<input type="checkbox"/>	Drawings	<input checked="" type="checkbox"/>	Approval	A - Approved	C - Revise and Resubmit
<input checked="" type="checkbox"/>	Material / Sample	<input type="checkbox"/>		B - Approved as Noted	D - For Information
<input type="checkbox"/>	Method Statement	<input type="checkbox"/>			
<input type="checkbox"/>	Inspection / Test	<input type="checkbox"/>			
<input type="checkbox"/>	Health & Safety	<input type="checkbox"/>			
<input type="checkbox"/>	Quality	<input type="checkbox"/>			
<input type="checkbox"/>	O&M Manuals	<input type="checkbox"/>			
<input type="checkbox"/>	Documents (Others)	<input checked="" type="checkbox"/>	Due Date: 31/10/2016		



ITEM	DOCUMENT NO	REV.	DESCRIPTION	TYPE	STATUS
1	FV3-III-MC-MT-ID-00112	R02	Material Technical Submittal for Non Fire Rated Aluminium Door at Back of House Areas at FV3 Level 16 & Above (Please Refer to Attached Drawings for Location) - Reply to Engineer's Comments	MAT	B

Signed:   
 RICHARD IAIN BURTENSHAW -

Sent Date: 24/10/16

Consultant General Comments:

**Note:** Correction or comments made relative to submittals during this review DO NOT relieve the contractor from compliance with the requirements of drawings and specifications. This check is only for review of general conformance with design concept of the project.

Signed: \_\_\_\_\_  
 Khalid Al Shalah - Chief Resident Engineer

Response Date:

PM/Employer General Comments:

Signed: \_\_\_\_\_  
 Turner Construction International LLC

Sent Date:


**PROJECT:** The Address Residence Fountain View  
Development  
**PACKAGE:** Main Works

**MATERIAL SUBMITTAL**

**Contractor Name:** Arabian Construction Company  
**Consultant Name:** Dewan Al Emara Architects & Engineers

Package No: MW

DOCUMENT NO.	REV.	DESCRIPTION	DISCIPLINES	DOCUMENT TYPE
FV3-III-MC-MT-ID-00112	R02	Material Technical Submittal for Non Fire Rated Aluminium Door at Back of House Areas at FV3 Level 16 & Above (Please Refer to Attached Drawings for Location) - Reply to Engineer's Comments	Interior Design	Material / Sample


<b>Drawing / Drawing Number:</b> _____		<b>List of Enclosure</b>
<b>Spec. / BOQ/ Dwg. Reference :</b> Volume 3 Part B Sec. 05 50 00		<input checked="" type="checkbox"/> Vendor's Technical Literature
<b>Material Proposed :</b> Non Fire Rated Aluminium Door at Back of House Areas		<input checked="" type="checkbox"/> Compliance Statement
<b>Manufacturer / Local Supplier :</b> Gulf Extrusions / Jotun / Princess Technical Services		<input type="checkbox"/> Previous Test Results
		<input checked="" type="checkbox"/> Copy of the Related Specs
		<input type="checkbox"/> Samples
		<input type="checkbox"/> List of Previous Projects Done
		<input checked="" type="checkbox"/> Others (Specify):
Signed:  Mr. RICHARD IAIN BURTENSHAW -		Date: <u>24/10/16</u>

CONSULTANT COMMENTS:	STATUS
<i>refer to the comments in the submittal.</i>	<input type="checkbox"/> A - Approved
	<input checked="" type="checkbox"/> B - Approved As Noted
	<input type="checkbox"/> C - Revised and Resubmit

Signed:  Date: 22.11.16 21/11/16  
Mr. Khalid Al Shalah - Chief Resident Engineer

**PM COMMENTS:**

*- NO objection as per consultant comments.  
- Benchmark shall be provided for review and approval.  
MEP: NO OBJECTION*

Signed:  Date: 23.11.16 23.11.16

**EMPLOYER COMMENTS:**

Signed: \_\_\_\_\_ Date: \_\_\_\_\_

							
SHOP DRAWING SUBMITTAL						Date: 24/10/2016	
PROJECT		: PROPOSED (B+G+4+R) RESIDENTIAL BUILDING					
CLIENT		: M/s DAWN PROPERTIES LTD					
CONSULTANT		: M/S RENAISSANCE ENGINEERING CONSULTANTS					
CONTRACTOR		: DUBAI WALLS CONSTRUCTIONS					
Description:		SHOP DRAWINGS FOR PERGOLAS @ ELEVATION HARD COPY & Soft Copy				Ref. Dwc/JVT/ 07	
Dwg. Ref.							
Shop Drawing Submittal Comply with Specifications <input type="checkbox"/> Yes <input type="checkbox"/> Alternative							
Details if Alternative:							
Contractor Project Manager Signature: 				MEP Contractor:		Received by	
Consultant Review Comments:							
<p>AS NOTED</p> <p>ⓐ follow comments on drawings.</p>							
Recommendation for Approval							
Approved <input type="checkbox"/>							
Approved as Noted <input checked="" type="checkbox"/>							
Resubmit <input type="checkbox"/>							
Rejected <input type="checkbox"/>							
Signature .....						Date: 29-11-2016	
Decision :-							
RENAISSANCE ENGINEERING CONSULTANTS		Signature:  REC				Date:	

Renaissance Engineering Consultant

RECEIVED  
24 OCT 2016

BY: .....



# Herald شركة منادي للمقاولات (ش.ذ.م.م.) **HERALD CONTRACTING CO.(L.L.C.)**

Add. : P.O. Box No. 118463, Dubai - U.A.E, Tel.: 04 5515880, Fax: 04 5515883, E-mail: admin@heraldgroup.ae, Website: www.heraldgroup.ae

## Local Purchase Order

**Project:** Umm Suqeim Villas on Plot 362-1361 **L.P.O. NO.** HC148J/7/111/16  
**Client:** Wasl Asset Management Group **Date:** 20.09.2016  
**Consultant:** Dewan Architects + Engineers  
**To:** Al Barrak Aluminium & Steel Works  
Attn: Mr. Jose ( Mob. # 050 6345617/ 050 9595618 )

Please supply the following Material(s) on our account subject to instructions herein along with terms & conditions and send your bill along with the copy of your Delivery Note Acknowledging Receipt of your materials by us, to effect payment. For any clarifications kindly contact the undersigned.

Sr. No.	Description	Unit	Qty	Unit Price		Amount Dhs.
				Dh.	Fills	
1	Supply and Installation of Aluminium Handrail for kids Swimming Pool curved welded and supply and Installation of double lead door for swimming pool railing all as per specification and drawings and as per your quotation Ref. No. ABAS/QTN/1074/09-2016 REV.1 <b>PaymentTerms:</b> 20% - Advance Payment 30% - Against Delivery of material at site 50% - After completion of work and approval of the same by Client/consultants. <b>Note:</b> Work to be Completed by 27.09.2016				L.sum	
<b>Total (DHS):</b>						
<b>Amount in Words: (</b>						

### Conditions:

- \*Any works rejected by Client/Consultant and by us should be replaced free of cost and within 10 days.
- \*Warranty/Guaranty as per specification and as per instruction by Client/Consultant
- \* Final price will be depending upon evaluation of other suppliers price.

### Instructions :

1. Supply Immediately / Within Immediately days of this date.
2. Mode of Delivery: By you at referred site.
3. To delivering 08.00 Hrs. to 17.00 Hrs.
4. Payment Terms: As usual

Prepared by (Murali)

Checked by



Authorised by



## LOCAL PURCHASE ORDER

M/S : Al Barrak Aluminum & Steel works

L.P.O No: CM89-0098A

Date: 22/02/2016

Name : Mr. Jubin  
Address : M/s Al Barrak  
P.O.Box : 29368, Dubai- UAE  
Tel : 06-7483520  
Mobile : 056-0509595618  
E-mail : albarak4@gmail.com

Payment Terms : Mentioned as below  
Project No : CM-89  
Requested by : Savio D'Mello Tel: 04-2563980  
Site Contact Person: Santosh – 055.8836568  
Project : Proposed (G+M) Warehouse and Office  
For Orchid Gulf FZ LLC on Plot No: IND.057  
At International Media Production Zone , Dubai  
UAE.

Kindly supply, deliver & installation of the following materials / services to the above mentioned location/Project:

SR NO.	DESCRIPTION	UNIT	QTY	RATE (AED)	AMOUNT (AED)
1.	W1: Aluminium Framed double glazed fixed window with 2 panels – 2.5 x 0.65 m	Nos.	14		
2.	W2: Aluminium Framed double glazed Sliding window with 2 panels – 2.0 x 1.4 m	Nos.	4		
3.	W3: Aluminium Framed Curtain wall top hung window – 0.8 x 1.4 m	Nos.	6		
4.	W4: Aluminium Framed Curtain wall top hung window with partly fixed panels – 7.8 x 1.4 m	Nos.	2		





CIVIL MATRIX  
CONTRACTING L.L.C

5.	AD1: Aluminum framed partly glazed and partly sandwich paneled double swing door 2.0 x 2.1 m As per existing building door.	Nos.	2		
6.	AD2: Aluminium framed partly glazed and partly sandwich paneled double swing door 0.9 x 2.1 m (office entrance door)	Nos.	2		
7.	AD3: Aluminium framed sandwich paneled door 0.9 x 2.1 m (Prayer / Ablution / toilet entrance / Tel)	Nos.	7		
8.	LD1: Aluminium framed Single swing louvered door 0.8 x 2.1 m (Electric room & pump room)	Nos.	2		
9.	Aluminum Composite Panel Cladding	M2	280		

Total Amount in Words: AED	TOTAL	
----------------------------	-------	--

Page 2 of 3

L.P.O No: CM89-0098A

Tel: +971 4 2563980 Fax: +971 4 2563981, P.O. Box 121783, Dubai, UAE, [www.civilmatrixco.com](http://www.civilmatrixco.com)

**Terms & Conditions:**

1. Payment Terms: 30% advance on confirmation against security cheque to be returned upon delivery Of material at site.  
50% upon Material delivery  
10% upon installation and 10 % final approval from the Client.  
Duration: 14 days from the date of shop drawing approval from the client.
2. Door window schedule and shop drawings to be submitted within 7 days from this date.
3. All specifications shall be as per consultant drawings.
4. Sections to be of Al Ghurair. Glass to be Belgium and ironmongery from Italy or equivalent to the approval of client.
5. Sample of Aluminium section, glass and ironmongery to be submitted for client's approval within 7 days from this date.
6. Glass color and sections color to be confirmed after approval from client.
7. Double glazing shall consist of 6mm reflective medium performance outer glass + 12mm air gap + 6mm inner clear glass.
8. This work order is valid subject to the approval of M/s Al Barrak Aluminum & Steel works, by the Client.
- 9.

**Notes:**

1. All Invoices to be submitted to the head office.
2. Local Order No and Project No to be stated in all invoices.

Authorized by: Savio D'Mello



## WORK ORDER

MS: Al Barrak Aluminum & Steel Works

W.O No: CM-114-0059R1

Date: 13/03/2016

Name : Mr. Jubin Dany Jose  
Address : M/s Al Barrak Aluminum & Steel Works  
P.O. Box : 2934 , Ajman  
Tel : 06-7483520  
Mobile : 050.774.3850  
E-mail : albarak4@eim.ae

Payment Terms : Mentioned as below  
Project No : CM-114  
Requested by : Savio D'Mello Tel: 04-2563980  
Site Contact Person: Mukesh - 056-6372405.  
Project : Design, Construction and Maintenance  
Of Production Hall Facility, For  
M/s LPFLEX Base Industry @ Plot No:  
5330314 in DIC, Dubai -UAE.

Kindly supply, deliver & installation of the following materials / services to the above mentioned location/Project:

SR NO.	DESCRIPTION	UNIT	QTY	RATE (AED)	AMOUNT (AED)
1	W1: Aluminum Framed double glazed window partly open able window of Size 4.0m x 1.0m	Nos.	4		
2.	W2: Aluminum Framed glazed Fixed window of Size 2.0m x 1.2m	Nos.	3		
3.	W3: Aluminum Framed glazed Fixed window of Size 1.0m x 1.0m	Nos.	9		
4.	W4: Aluminum Framed double glazed Fixed window with two panels of Size 1.8m x 1.0m	Nos.	1		
5.	W7: Aluminum Framed glazed Fixed window of Size 1.0m x 1.5m	Nos.	2		
6.	W8: Aluminum Framed double glazed Fixed window of Size 2.0m x 0.5m	Nos.	3		



7.	V2: Aluminum Framed glazed Fixed window of Size 2.0m x 1.0m	Nos.	4		
8.	V4: Aluminum Framed double glazed window all top hung of Size 4.4m x 1.0m	Nos.	1		
9.	W10: Aluminum framed double glazed window of size 4.0 x .6m	Nos.	1		
10.	W6: Aluminum Framed glazed Fixed window of Size 1.0m x 1.0m	Nos.	1		
11.	Double Leaf Louvered Door for Pump room 1.8m x 2.1m	Nos.	1		
12.	Aluminum framed Sliding window at Guard room – 1.0 x 1.0m	Nos.	4		
13.	Double leaf Louvered door at LV Room 1.5m x 2.5m	Nos.	1		
14.	Fixed Louver for Sub Station (2600 x 2150)	Nos.	2		
15.	Folding Door for Sub station (3.05 x 2.75)	Nos.	1		
16.	D3: Partly Fixed and Glazed with reflective glass of Door Size 2.2m x 2.1m	Nos.	1		
17.	D3' :Aluminum framed Sandwich paneled door of size 1.0 x 2.1m	Nos.	1		
17.	Canopy – Heavy duty steel structure overlaid with 4mm thick ACP of brand ALUCOPANEL, USA. Supported with 10mm dia steel wired rope onto the concrete wall.	Item.	1		
18.	Aluminum Composite Panel wall Cladding of 117.5m <sup>2</sup>	Item	1		

	<b>TOTAL</b>	
	<b>Spl. Discount</b>	
<b>Total Amount in Words: AED</b>	<b>Total Amount</b>	

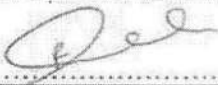
**Terms & Conditions:**

1. Payment Terms: 30% advance on confirmation against security cheque to be returned upon delivery Of material at site.  
50% upon Material delivery  
10% upon installation and 10% upon final approval from the Client
2. Door window schedule and shop drawings to be submitted within 7 days from this date.
3. All specifications shall be as per consultant drawings.
4. Sections to be of Al Ghurair or Equivalent. Glass to be Belgium and ironmongery from Italy or equivalent to the approval of client.
5. Sample of Aluminium section, glass and ironmongery to be submitted for client's approval within 7 days from this date.
6. Glass color and sections color to be confirmed after approval from client.
7. Aluminium Composite Panel for Wall Cladding Shall be ALUCOPANEL, USA & Fire Rated.
8. Canopy shall consist Heavy duty steel structure overlaid with Aluminum Composite Panel, ALUCOPANEL, USA. Supported with 10mm dia steel wired rope on concrete wall.
9. All measurements should be re check at site before going for fabrication.

**Notes:**

1. All Invoices to be submitted to the head office.
2. Work Order No and Project No to be stated in all invoices.

Authorized by: Savio D'Mello .....







## Our Gallery



**Client** : **PURE HELIUM GULF FZO – AIR LIQUID**  
**Project** : **Office & Warehouse, JAFZA**  
**Contractor** : **Pravarthi Building Contracting LLC**  
**Consultant** : **Corporate Planners Engineering Consultants**





**Client : LP FLEX**  
**Project : G+M Office & Warehouse, DIC**  
**Contractor : Civil Matrix Contracting LLC**  
**Consultant : Winner Consultants**



LPFLEX BASE INDUSTRY LLC



LPFLEX DUBAI  
JUN 2016



**Client** : **ORCHID FZE**  
**Project** : **G+M Warehouse and Office, DIP**  
**Contractor** : **Civil Matrix Contracting LLC**  
**Consultant** : **Noble Consultants & Engineers**





**Project : G+1 Villa, Muhaisanah**  
**Contractor : AKAD Construction**  
**Consultant : Adnan Saffarini Engineering & Consultants**





**Project :** G+3 Building, Deira  
**Contractor :** Al Buhaira Contracting LLC  
**Consultant :** Al Thuraya Consultants



**Project : G+4 Labour Camp, Ras Al Khor**  
**Contractor : Herald Contracting LLC**  
**Consultant : Frasernag Partnership**

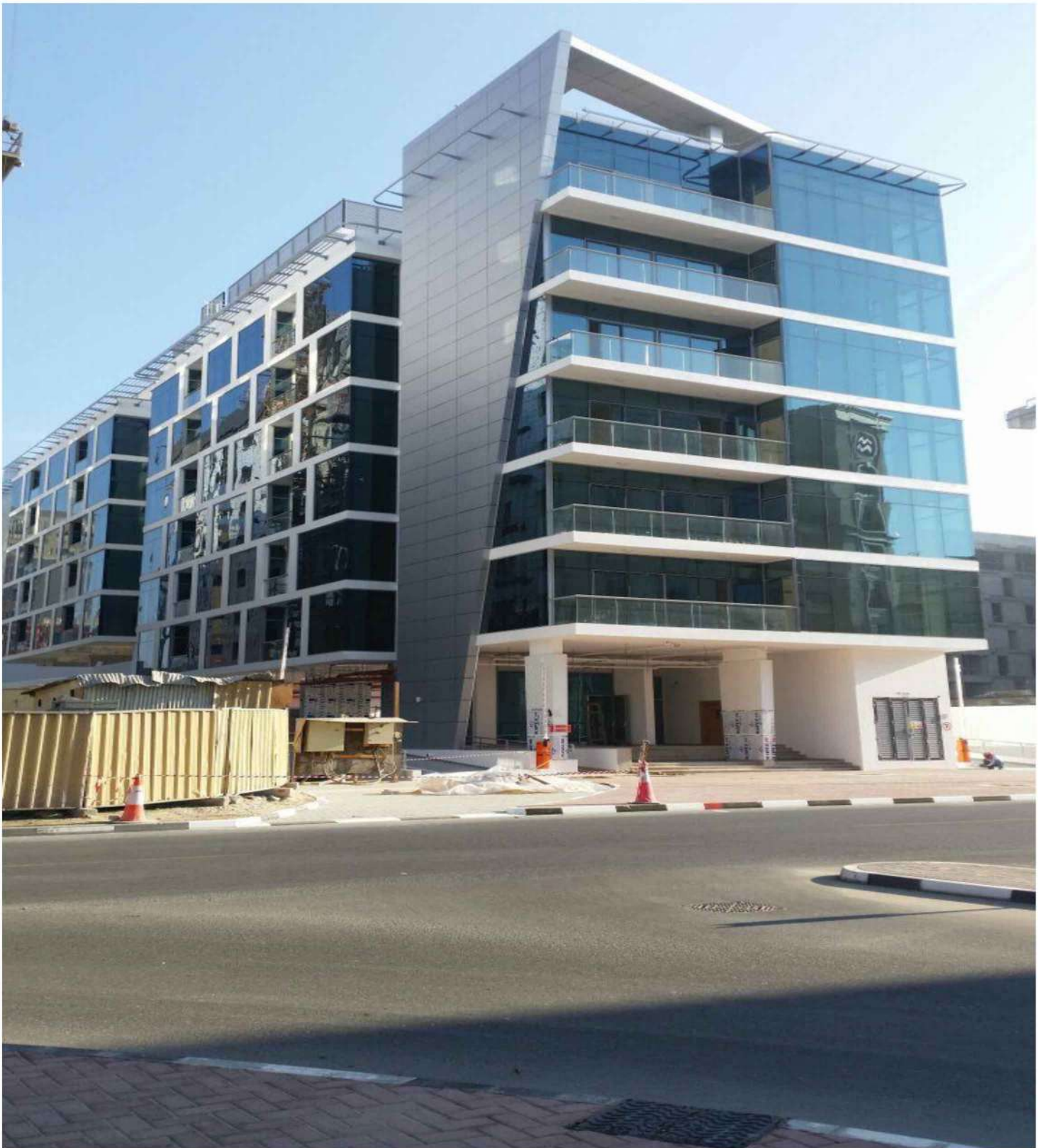




**Project :** G+3 Building, Dubai  
**Contractor :** Al Buhaira Contracting LLC  
**Consultant :** Al Majal Consultants



**Project : G+7 Building, Al Raffa, Dubai**  
**Contractor : Al Buhaira Contracting LLC**  
**Consultant : Dubarch**





**Project : G+1 Villa, Mizr, Dubai**  
**Contractor : Al Buhaira Contracting LLC**  
**Consultant : Al Thuraya Consultants**





**Project : G+M Office, Abu Shagara, Sharjah**  
**Contractor : Hilal Al Emirate Bldg Contracting LLC**  
**Consultant : Sharjah Consultants**



**Project : Abu Dhabi Indian School, Abu Dhabi**  
**Contractor : Chicago Maintenance & Construction LLC**





**Client** : Al Rostamani  
**Project** : (G+6) Building, Barsha  
**Contractor** : Al Arif Contracting LLC  
**Consultant** : Arif & Bint oak





**Client** : Al Rostamani  
**Project** : (G+11) Building, Jadaf  
**Contractor** : Al Arif Contracting LLC  
**Consultant** : Arif & Bint oak





**Client : Wasl Asset Management Group**  
**Project : 25 Luxury villas at Umm Suqeim, Dubai**  
**Contractor : Herald Contracting LLC**  
**Consultant : Dewan Architechs + Engineers**



كل عزام  
23.10.2014







**Client** : Hyatt Regency, Deira  
**Project** : 2B+G+25  
**Contractor** : Interior International FZE  
**Consultant** : Robert Mathew Jackson Marshal Engineers





**Project :** 103 Villas, Dubai Golf Club, Dubai  
**Contractor :** Herald Contracting LLC  
**Consultant :** Arch Group



**Project : G+1 Office, Dubai**  
**Contractor : Multilink Contracting LLC**  
**Consultant : Freeline Engineering, Beltxco**





**Project : G+1 Office, Dubai**  
**Contractor : Multilink Contracting LLC**  
**Consultant : Torphy Engineering**



**Project : G+1 Villa, Al Noof, Sharjah**  
**Contractor : Hunna Al Madina Contracting LLC**  
**Consultant : Al Hilal Engineering Consultants**





**Project : 172 Car Park Shade, Dubai**  
**Client : Government of Dubai**





**Project : Fabrication of 100 Weighbridges**

**Contractor : Danway LLC**





**CONTACT US**





## CONTACT US

**Address :** **AL BARRAK ALUMINIUM & STEEL WORKS**

P.O. Box 2934,

Ajman, UAE

Tel : +971 6 748 3520

Fax : +971 6 748 3646

**Email :** [albarak4@gmail.com](mailto:albarak4@gmail.com)

**Website :** [www.albarrakuae.com](http://www.albarrakuae.com)

**Contact Person-1 :** **Mr. Jose Daniel (*Managing Director*)**

Mob : +971 50 634 5617

**Contact Person-2 :** **Mr. Jubin Dany Jose (*Project Manager*)**

Mob : +971 50 959 5618



# *TRADE LICENSE*

تجديد  
رقم الملف: 22931  
رخصة مهنية  
سجل تجاري رقم: 0  
رقم العضوية: 19170

اسم صاحب التراخيص	الجنسية	رقم الجواز	الصفة
علي حسن علي بن حجر الشحي	الإمارات العربية المتحدة	2428482	وكيل خدمات
جوسي دانتيل	الهند	2055723	مالك

الإسم التجاري: البراق لاعمال الالمنيوم والحدادة

Trade Name : AL BARRAK ALUMINIUM & STEEL WORKS

Legal Form : Local Partner-Service Agent

الشكل القانوني: وكيل خدمات

نوع النشاط
Metallic Doors and Windows Installation Workshop
Steelwork and Welding Workshop

المدير:

الأجر / ناصر يوسف ناصر النعيمي

العنوان: عجمان الصناعية 1

ملاحظات:

رقم العقار 3 نوع العقار شيرة

تاريخ الاصدار: 1995-08-15

تاريخ انتهاء العقد: 2017-11-30 صنفوق بريد: 2934

تاريخ الانتهاء: 2017-12-01

Print Date 2017-01-04 تاريخ الطباعة 622 م

رقم الايصال 291,