



COMPANY PROFILE

www.soecgroup.ae

Content

Company Overview 01

About Us 02

Capabilities 03

Our Facility Info 04

Workshop Repairs 05

Commitment to QHSE 06

Certifications 07

Jobs handled in workshop 08

Brands We Service 09

Our Major Clients 10

Contact Information 11



COMPANY OVERVIEW

Vision

At SOEC Group, we paint a vision of a future where the fusion of precision and excellence propels the realm of motors, generators, and alternators into a new era. We breathe life into this vision through an unwavering commitment to innovation, steadfast reliability, and unyielding sustainability, positioning us as the ultimate destination for all your rewinding, overhauling, and servicing requirements.

Mission

At SOEC Group, our mission is to be the trusted partner for all your motor rewinding and overhauling needs. We are dedicated to delivering exceptional value to our customers by providing top-quality motor repair and maintenance services that optimize performance, reduce downtime, and contribute to a sustainable future.



ABOUT US

Sharjah & Oman Engineering incorporated in the year 2004 has become one of the leading Rotating Equipment Repair companies in UAE.

We carry out Rewinding and Overhauling of AC/DC Motors, Alternators, Generators and Pumps.

We provide our service for clients in all major industries like Petrochemical, Oil & Gas, Steel, Cement, Marine, Water Plant, Power Rental etc.

We take pride in keeping quality as our prime concern by maintaining a fairly competitive price without compromising on our standards.





CAPABILITIES

- All Types of HV/LV Alternators (up to 200MW, 13.8KV)
- All Types of AC /DC Motors (Up to 20MW, 11KV)
- All Types of Compressor Motors
- All Types of District cooling Pump Motors
- All Types of GE 752 & EMD Drill Motors
- All Types of Baylor Brake Repairs
- All Types of Submersible Pump Repairs
- All Types of Vibrator Motors
- All Types of Explosion-proof motors to IEC 60079-19 standard (Ex'd', Ex'e', Ex'de', Ex'n', Ex'p')





OUR FACILITY INFO

Our Facility

Our renovated 20,000 Sqft facility located in Sharjah UAE. This is the largest of its kind in the Northern Emirates with all in-house facilities to provide cost effective Rewinding solutions to our clients while guaranteeing Quality, Technical Standards and Complete Satisfaction.

Facility Equipments

- 10t Demag Overhead Crane
- 5t & 3t Forklifts
- 2 x Dynamic Balancing Machine (Rotors up to 2m in diameter, 5m in length, 12t job handling capacity, and balancing speed range of 210 - 1500 rpm)
- 3 x Baking Ovens (3x3x3m, 2x2x2m and 1x1x1m)
- Varnish Dip Tank
- Sand Blasting Machine
- 5 X Lathe Machines (Turning Dia of 2m and Max Length of 6m)
- Motor Testing Panel: Up to 11 Kv Testing capacity.

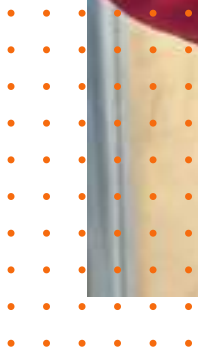


WORKSHOP REPAIRS



REWINDING & OVERHAULING

- Our Rewinding facility has the necessary tools and equipment, combined with the knowledge and expertise of our skilled technicians and qualified engineers to perform the Repair/ Refurbishment of AC/DC Motors, Alternators, Pumps etc.
- Our Workshop is certified to carry out repairs of all types of Explosion Proof Motors.





ELECTRICAL TESTING

- Our facility is fully equipped with state-of-the-art equipments to carry out electrical testing on HV/LV, AC/DC Motors, Pumps, Generators, and Alternators.
- We can carry out electrical testing, both on-site and off-site.

Electrical Testing Equipment-

- Surge Comparison Tester (0 To 10KV)
- Sand Blasting Machine
- Winding Analyzer (Baker SKF) (Up To 15KV)
- BM25 Megger (5kV)
- Digital Low Resistance Ohm Meter With High Current Capacity
- DC High Pot (Up To 25KV)
- Vibration Analyzer (VB-8 With Trim Balancing)
- High Voltage Tester with Probe (Up To 55KV)
- Growler (Test For Rotor/Stator Core Testing)
- Boroscope Inspection Kit
- FLIR E SERIES Thermographic Camera
- Fluke Vibration Analysis Equipment
- Easy-Laser Alignment Kit (Including Belt Alignment)
- Phase Sequence Meter (non-contact)
- Tachometer (Speedo Meter)
- Digital Mechanical Stethoscope
- Other commonly used testers



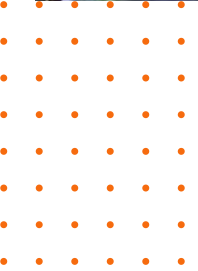
DYNAMIC BALANCING

- Balancing of the Rotor prevents excessive loading of bearings and avoids fatigue failure, thus increasing the life of the Motor.
- our facility can handle Dynamic Balancing of Rotors up to 12t capacity
- Rotors are balanced as per ISO standards G.2.5/G1 Grade



VIBRATION ANALYSIS

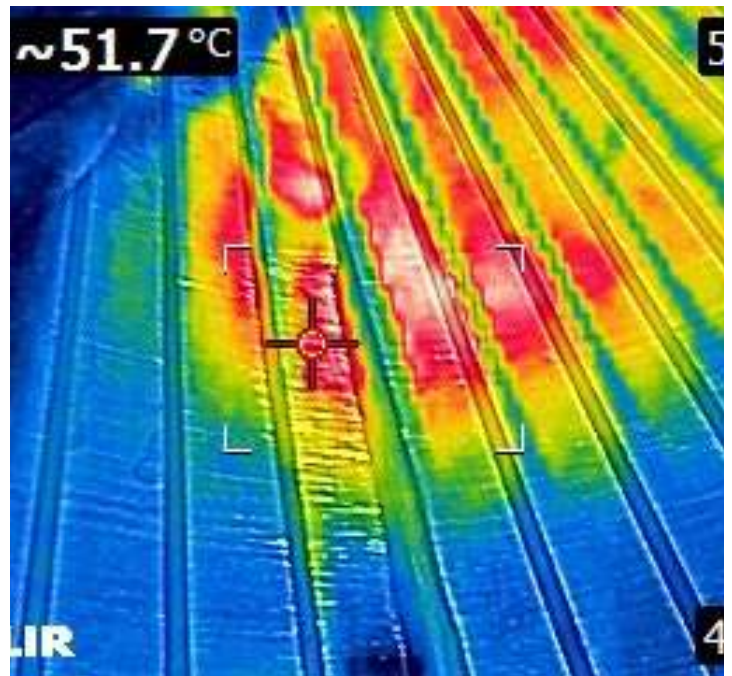
- The Fluke 810 Vibration Tester is the most advanced troubleshooting tool that we have in our workshop that quickly identifies and prioritizes mechanical problems, enhancing the expertise of the vibration analyst.
- Overall vibration measurements and spectral diagrams quickly assess overall machine health, while enhanced reporting and actionable recommendations are needed to address critical problems first





THERMOGRAPHY

- The FLIR Ex series offers the resolution and sensitivity needed for condition monitoring.
- The 320 × 240pixel thermal detector accurately measures temperatures up to 650°C (1202°F) and produces crisp, vibrant images for added detail and perspective.
- The FLIR camera offers 3 spot meters, also displays the max/min temperature within an area live, on-screen.



TRANSFORMER SERVICES

➤ Overhauling / Servicing, Repairing, and oil filtration of all types of Transformers up to 11KV, 10,000KVA

Sharjah Oman Engineering transformer maintenance services include

- Gasket/Bushing Repair
- Breakdown Inspection
- Oil Replacement
- Oil Testing and Filtration Services
- Transformer Modification
- OLTC Servicing and Repair
- Erection and Commissioning
- P.D Measurement
- Measurement of Dynamic Resistance of OLTC
- Repair to Original Specifications
- Rewinding Services
- Insulation Testing
- Leak Detection and Rectification
- Pressure Clamping
- Replacement of Parts & Accessories
- Thermography
- BDV (Breakdown Voltage), Moisture Content, and DGA (Dissolved Gas Analysis) Testing





COMPONENT SALVAGING WORKS

- Manufacturing, Salvaging, and re-conditioning of Rotor shafts, Bearing seating, Bearing journals, Housing, End shield, Slip ring, etc.
- Gear replacement.
- Press out and press in of Rotor shafts up to 500 Tons of pressure.
- Replacement of worn-out coupling.
- Repair of White Metal Bearings.





STATOR CORE RESTACKING



- Our technicians are specialised in core restacking of damaged stator cores.
- We ensure our customers economical repair of motor failures having significant core damage without compromising the end result.



LASER ALIGNMENT

Easy-Laser XT440 can perform all necessary steps of shaft alignment on horizontal and vertically/flange-mounted machines.

With XT440 we can carry out the following-

- Align the machine
- Check base twist
- Check bearing play
- Check soft foot
- Measure machine movement over time
- Document and share the results



MACHINE SHOP



- Our Machine shop has a range of Lathe machines of various sizes such as Drilling machine, Shaping machine, Milling machine, Line boring machine, Vertical boring machine etc.
- Our range of machines include Portable Line boring machine for on site machining of bores to its original specification/size.
- We also undertake re-conditioning works INSITU.



COMMITMENT TO QHSE

Our Company is principled in Quality, Integrity, Engagement, and Performance.

We are committed to QHSE policy as we strive for-

- Uncompromising focus on safety
- Employee engagement
- Customer satisfaction
- Procedure conformance
- Continual improvement
- Minimizing workplace hazards

APPROVED BY-



**IECEX CoC
Certified Service Facility**

CERTIFICATIONS



JOBS HANDLED IN WORKSHOP















BRANDS WE SERVICE



OUR MAJOR CLIENTS



CONTACT INFORMATION

+971 50 481 7715

info@soecgroup.ae

www.soecgroup.ae



Follow Us On
Linkedin



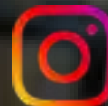
Message Us On
Whatsapp



Follow US On
Facebook



Subscribe To Our
YouTube Channel



Follow Us On
Instagram

