

# SUNELWALA

BUILDING MATERIALS TRDG. CO. LLC

Oilfield, Marine, Industrial and Hardware Items



Tel: +971 4 238 5652 / +971 4 238 5752    Mob: +971 50 748 1772  
Fax: +971 4 238 5662    info@swbm-fittings.com    www.swbm-fittings.com



Your One-Stop Shop For All Your Pipe Fittings Needs

## ABOUT US

Welcome to Sunel Wala Building Materials LLC (SWBM), a cherished and family-driven import/wholesale enterprise that has been a beacon of quality in the UAE and MENA Region since our establishment in 2002.

As a reliable one-stop shop, SWBM is your go-to destination for all your pipe fittings needs. Specializing in a diverse range of products, we pride ourselves on providing top-quality materials at competitive prices that meet the highest industry standards. Our commitment to excellence is a testament to our family values, ingrained in every facet of our business.

## PRODUCT PORTFOLIO

At SWBM, we offer a comprehensive selection of piping solutions to cater to your diverse requirements. From MS & SS Pipes to Forged Threaded Fittings ranging from 1000 LBS to 6000 LBS, and Butt Weld Fittings in Sch.40, Sch.80, Sch.160, we have you covered. Explore our extensive range of Flanges (SORF, BLRF, THRF, WNRF), Flange Gaskets (Rubber, CNAF, Teflon, SPW, RTJ Gaskets), Valves (Gate, Globe, Check, Y-Strainer, Bronze Safety Valve, Forged Steel Valves), Pipe Nipples, Hoses, Hose Clamps, Camlocks, Rubber Sheets, CNAF Sheets, Hammer Unions, Single & Double Bolt Clamps, and more.

## BRANDS IN STOCK

We take pride in offering products from renowned brands, ensuring reliability and durability. Our diverse inventory includes brands such as Both-Well Forged Fittings (Taiwan), TOHO Bronze Valves (Taiwan), Superlite CNAF Gasket Sheets (India), Ferolite Gasket Sheets (India), JARTA Flexible Connectors (China), HEBEI Butt-Weld Fittings (China), SARA SAE Hammer Union & RTJ Gaskets (India), SW Flow Controls (Valves & Fittings), Valtec Valves (Taiwan), JCS Hi-Grip Hose Clips (UK), and ASIAN RTJ Gaskets (India).

## INDUSTRIES WE SERVE

At SWBM, we cater to a diverse clientele across industries such as Traders, Oil & Gas, Electro-mechanical, Shipbuilding, Engineering, Marine, Construction, Sugar Plant, Paper Manufacturing, Power, and more.

## OUR SERVICES

We go beyond products, offering tailored services such as Pipe Cutting, Beveling, Threading, Welding, Flange Turning, Pipe Fitting Galvanizing, and custom Flange Gasket cutting. Precision and efficiency define our commitment to meeting the unique needs of diverse industries.

# OUR SERVICES

## MACHINING & FABRICATION

We provide consolidated machining and fabrication facilities, along with seamless access to outsourced facilities. While most requisitions are covered by our standard stock range, it is not always sufficient. We deliver added value by ensuring swift turnarounds for unique machining and fabrication requirements, regardless of complexity, within the specified timeframe. Our services include cutting, beveling, threading, welding, OD/ID turning and boring, bending, and more.

## LOGISTICS

We have a proficient logistics team with expertise in seamlessly integrating materials from our own stock and multiple sources. We excel in organizing appropriate packaging and ensuring timely deliveries in acceptable condition from and to destinations worldwide. Our comprehensive services encompass total Supply Chain Solutions. Strategically located near the Jebel Ali seaport, the largest in the Middle East, we have convenient access to airports and highways. Regular shipping to project sites is a key aspect of our operational efficiency.

## COATING

We specialize in providing piping equipment with various coating requirements, such as Hot Dip Galvanizing, Electro-Galvanizing, Black Finish, Golden Finish, etc.

## SPECIAL SOURCING

In addition to the typical sizes and grades outlined in our stock range, we distinguish ourselves by being exceptionally competitive in sourcing, procuring, and supplying large sizes, high-pressure/temperature, and exceptional materials from our extensive database of manufacturers and stockists worldwide. This added value enables us to fulfill your comprehensive package requirements, providing your company with the advantage of placing orders with a single entity. This streamlined approach minimizes documentation, expediting, and associated costs for your convenience.



# INDEX



<b>5</b>	GI/MI FITTINGS MS BUTT-WELD FITTINGS MS THREADED FITTINGS SS BUTT-WELD FITTINGS	<b>15</b>	Y-STRAINER GLOBE ANGLE HOSE VALVE GLOBE HOSE VALVE AIR VENT HEAD VALVE
<b>6</b>	SS THREADED FITTINGS BRASS FITTINGS PIPE NIPPLE SWAGE NIPPLE	<b>16</b>	BALL VALVES STEAM TRAP PRESSURE GAUGE ANGLE VALVE
<b>7</b>	CAST STEEL FLANGES FORGED FLANGES SS FLANGES BRASS FLANGES	<b>17</b>	STORM VALVE NEEDLE VALVE SAFETY VALVE CHECK VALVE
<b>8</b>	BI-METALLIC FLANGES BACKING RINGS SPECTACLE BLIND GROOVED FITTINGS	<b>18</b>	FORGED ELBOW 90D BLOCK ELBOW 90D FORGED TEE (3-WAY) BLOCK TEE (3-WAY)
<b>9</b>	FULL FACE & RAISED FACE GASKETS RING JOINT GASKETS SPIRAL WOUND GASKETS GATE VALVE	<b>19</b>	FORGED BLOCK CROSS (4-WAY) BLOCK CROSS (4-WAY) MALE TUBE CONNECTOR FEMALE TUBE CONNECTOR
<b>10</b>	BUTTERFLY VALVE BALL VALVE Y-STRAINER CHECK VALVE (NRV)	<b>20</b>	UNION TUBE CONNECTOR ELBOW TUBE CONNECTOR TEE TUBE CONNECTOR PIPE TUBE CLAMP/STAUFF CLAMP
<b>11</b>	GLOBE VALVE FLEXIBLE CONNECTOR HOSES HOSE NIPPLE/CONNECTOR	<b>21</b>	SMS FOOD GRADE CONC.REDUCER SMS FOOD GRADE TEE SMS FOOD GRADE UNION SMS FOOD GRADE ELBOW
<b>12</b>	CHICAGO COUPLING PIPE CLAMPS CAMLOCKS RUBBER SHEETS	<b>22</b>	SMS FOOD GRADE BUTTERFLY VALVE SMS FOOD GRADE CLAMP SMS FOOD GRADE BALL VALVE STRAUB COUPLING/PIPE REPAIR CLAMP
<b>13</b>	COMPRESSED ASBESTOS SHEETS NON-ASBESTOS SHEETS (CNAF) METALLIC-GRAPHITE HAMMER UNION	<b>23</b>	STORZ COUPLING PERROT, MILLER & BAUER COUPLING HOSE CLIPS (JCS HI-GRIP) WATER METER
<b>14</b>	GATE VALVE GLOBE VALVE SDNR CHECK VALVE ANGLE VALVE SDNR	<b>24</b>	SEALING SOLUTIONS GASKETS & PACKING



## GI / MI Fittings

### GI / MI Fittings

**Products** - Elbow 90D, Elbow 45D, Union, Cap, Socket, R/Socket, Bush, Tee, R/Tee, Plug

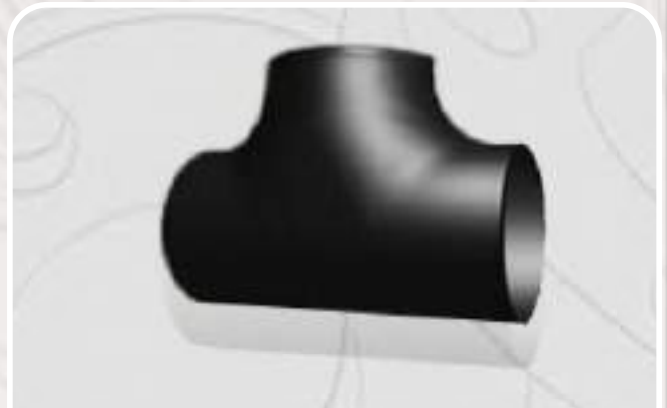
**Sizes** - 1/8" to 6"

### MS Butt-Weld Fittings

**Products** - Elbow 90D, Elbow 45D, Cap, Tee, R/Tee, Concentric Reducer, Eccentric Reducer

**Schedule** - #40 , #80 , #160

**Sizes** - 1/4" to 24"



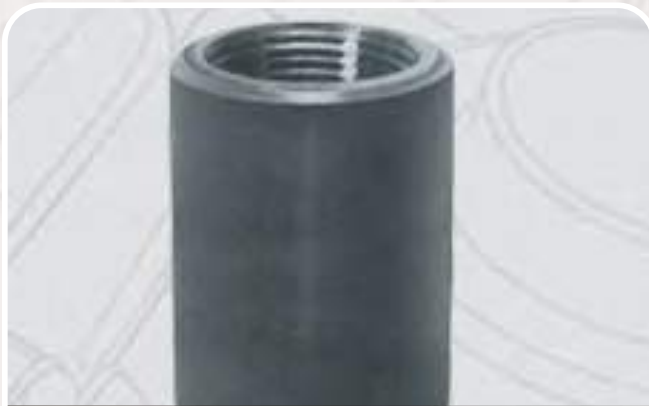
## MS Butt-Weld Fittings

### MS Threaded Fittings

**Products** - Elbow 90D, Elbow 45D, Union, Cap, Socket, R/Socket, Bush, Tee, R/Tee, Plug

**Pressure** - 1000 PSI , 2000PSI , 3000PSI , 6000PSI

**Sizes** - 1/4" to 4"



## MS Threaded Fittings

### SS Butt-Weld Fittings

**Products** - Elbow 90D, Elbow 45D, Cap, Tee, R/Tee, Concentric Reducer, Eccentric Reducer, Stub End

**Schedule** - #10 , #40

**Sizes** - 1/4" to 12"



## SS Butt-Weld Fittings



## SS Threaded Fittings

### SS Threaded Fittings

**Products** - Elbow 90D, Elbow 45D, Cap, Tee, R/Tee, Union, Socket, R/Socket, Plug, Bush

**Pressure** - CL150 (Low Pressure) , 3000 PSI (High Pressure)

**Sizes** - 1/4" to 4"

### Brass Fittings

**Products** - Elbow 90D, Socket, Hex Nipple, R/Bush, Tee, Plug

**Sizes** - 1/8" to 4"



## Brass Fittings



## Pipe Nipple

### Pipe Nipple

**Products** - MS Long Nipple, SS Long Nipple, GI Long Nipple, Brass Long Nipple, MS Close Nipple, SS Close Nipple

**Schedule** - #40 , #80 , #160

**Sizes** - Pipe Size 1/2" to 6" & length size from 1/2" to 200"

### Swage Nipple

**Products** - Concentric & Eccentric Swage nipple

**Type** - TBE , TSE, TLE, PBE, PSE, PLE, BBE, BSE, BLE

**Material** - Carbon Steel And Stainless Steel



## Swage Nipple



## Cast Steel Flanges

### Cast Steel flanges

**Products** - Slip-on (SO), Weld-Neck (WN), Threaded, Blind

**Ratings** - PN10, PN16, PN25, CL150, CL300, 5K, 10K

**Sizes** - ½" to 24" (S/O, W/N, Blind)  
½" to 6" (Threaded)

### Forged Flanges

**Products** - Slip-on (SO), Weld-Neck (WN), Threaded, Blind, Lap Joint, Socket Weld (SW)

**Ratings** - PN10, PN16, PN25, CL150, CL300, 5K, 10K

**Material-** A105 (China)  
A105 & A350 LF2 (European)

**Sizes** - ½" to 24" (S/O, W/N, Blind)  
½" to 6" (Threaded)



## Forged Flanges



## SS Flanges

### SS Flanges

**Products** - Slip-on (SO), Weld-Neck (WN), Threaded, Blind (BL), Lap Joint, Socket Weld (SW)

**Ratings** - PN10, PN16, CL150, CL300, 5k, 10k

**Sizes** - ½" to 48" (S/O, W/N, Blind) ½" to 6" (Threaded, Lap Joint, Socket Weld)

### Brass Flanges

**Products** - Slip-on (SO), Threaded

**Ratings** - PN16, CL150

**Sizes** - ½" to 12"



## Brass Flanges



## Bi-Metallic Flanges

### Bi-Metallic Flanges

**Products** - Composite flange comprising of epoxy powder coated flange ring and sweat-end brass coupler, suitable for connecting copper or brass pipes with each other or with steel pipes. Economical alternative to full brass flanges.

**Ratings** - PN16 & CL150

**Sizes** - 1" to 8"

### Backing Rings

**Ratings** - PN16 & CL150

**Material** - 1) Carbon Steel ASTM A 36 or A 516 Gr 70

2) SS304, SS304L, SS304H, SS316, SS316L, SS316H Almost any other steel, stainless steel or alloy steel can be supplied

**Sizes** - ½" to 24"



## Backing Rings

Spectacle Blind

Spacer

Spacer



## Spectacle Blind

### Spectacle Blind

**Ratings** - PN16 & CL150

**Material** - 1) Carbon Steel ASTM A 36 or A 516 Gr 70

2) SS304, SS304L, SS304H, SS316, SS316L, SS316H Almost any other steel, stainless steel or alloy steel can be supplied

**Sizes** - ½" to 48"

### Grooved Fittings

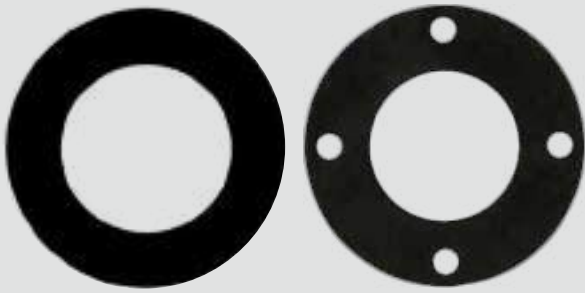
**Products** - Elbow 90D, Elbow 45D, Rigid Coupling Tee, Mechanical Tee, Concentric Reducer

**Sizes** - 1-1/2" - 10"



## Grooved Fittings





**Full Face & Raised Face Gaskets**

**Full Face Gaskets & Raised Face Gaskets**

**Products** - Gaskets with matching Bolt Holes of the flange commonly known as FF Gasket

Gaskets to suit the Raised Face of the flange commonly known as RF Gasket

**Materials** - Neoprene Rubber, EPDM Rubber, Asbestos (CAF), Non-Asbestos (CNAF), Teflon (PTFE), Metallic (Graphite)

**Sizes** - 1/2" to 48"

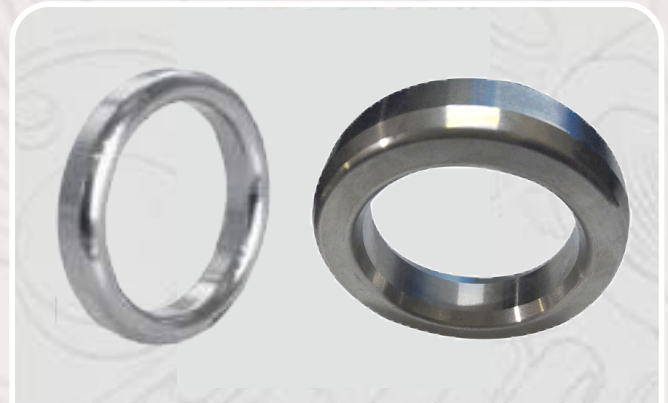
**Ring Joint Gaskets**

**Products** - Gaskets to fit in Ring Groove of the Flanges commonly known as RTJ Gasket

**Types** - BX, RX, R (Oval), R (Octagonal)

**Material** - Low Carbon Steel (LCS) & Stainless Steel 316L, Soft Iron (SI)

**Sizes** - R-11 upto R-105, BX-150 upto BX-303, RX-20 upto RX-82



**Ring Joint Gaskets**

**Spiral Wound Gasket**

**Products** - Spiral-Wound Gaskets are made of a preformed metallic V-shaped strip and a soft filler material wound together under pressure, with an outer guide ring commonly known as SPWD Gasket

**Type** - CS & SS Outer Ring, with or without SS inner ring, SPW Gasket

**Ratings** - CL150, CL300, CL600, CL900, CL1500, CL2500

**Sizes** - 1/2" to 48"



**Spiral Wound Gasket**

**Gate Valve**

**Material** - Cast Iron, Cast Steel, Stainless Steel, Brass, Bronze

**Threaded and Socketweld Ends** -

**Sizes** - 1/4" to 6"

**Rating** - CL800, CL1500

**Flange End**

**Sizes** - 1/2" to 24"

**Rating**- PN10, PN16, PN25, PN125, CL300, 5K, 10K



**Gate Valve**



**Butterfly Valve**

**Butterfly Valve**

**Material** - CI, CS , SS

**Disc** - Ductile iron, Brass, Stainless Steel

**Type** - Lever operated and Gear operated

**Models** - Wafer Type & Lug Type

**Rating** - PN16 & CL150

**Sizes** - 2" to 24"

**Ball Valve**

**Material** - Cast Iron, Cast Steel, SS, Brass, Bronze

**Type** - In Threaded-Body - 1pc Body, 2pc Body, 3pc Body

**Bore** - Full Bore, Reduced Bore

**Threaded and Socketweld Ends** -

**Sizes** - 1/4" to 6"

**Rating** - CL800, CL1500

**Flange End** -

**Size** - 1/2" to 24"

**Rating** - PN10 , PN16, PN25, PN125, CL300, 5K, 10K



**Ball Valve**

**Check Valve (NRV)**

**Material** - Cast Iron, Cast Steel, Stainless Steel, Brass, Bronze

**Threaded and Socketweld Ends** -

**Sizes** - 1/4" to 6"

**Rating** - CL800, CL1500

**Flange End** -

**Sizes** - 1/2" to 24"

**Rating** - PN10 , PN16, PN25, PN125, CL300, 5K 10K



**Check Valve (NRV)**

**Y-Strainer**

**Material** - Cast Iron, Cast Steel, Stainless Steel, Brass, Bronze

**Threaded and Socketweld Ends**

**Sizes** - 1/4" to 6"

**Rating** - CL800, CL1500

**Flange End** -

**Sizes** - 1/2" to 24"

**Rating** - PN10 , PN16, PN25, PN125, CL300, 5K, 10K



**Y-Strainer**



**Globe Valve**

**Globe Valve**

**Material** - Cast Iron, Cast Steel, Stainless Steel, Brass, Bronze

**Threaded and Socketweld Ends**

**Sizes** - 1/4" to 6"

**Rating** - CL800, CL1500

**Flange End -**

**Sizes** - 1/2" to 24"

**Rating** - PN10 , PN16, PN25, PN125, CL300, 5K, 10K

**Flange Type**

**Material** - GI, SS316

**Sizes** - 2" to 24"

**Rating** - PN16, CL150

**Union Type**

**Material** - GI, SS316

**Sizes** - 1/4" to 3"



**Flexible Connector**



**Hoses**

**Hoses**

**Sizes** - Green Suction Hose - Size - 1/2" to 6"

Steel Wire Hose - Size - 1/2" to 6"

Blue Flat Hose - Size - 2" to 10"

Reinforced Hose - Size - 1/4" to 3"

Rubber Air Hose - Size - 1/4" to 2"

Fire Hose - Size - 2" to 4"

**Hose Nipple / Hose Connector**

**Product** - 1) King Nipple / Hose Nipple - One side thread and one side hose connection

2) Hose Mender - Both Side Hose Connection

3) Tee Connection - Three Way Hose Connection

**Sizes** - 1/4" to 8" (GI)

1/4" to 4" (Brass & SS)



**Hose Nipple/Connector**



## Chicago Coupling

### Chicago Coupling

**Product** - Hose End, Male End, Female End, Three Way End

**Sizes** - 1/4" to 2"

### Pipe Clamps

**Types** - 1) Single Bolt Clamp - 17-19 to 239-252mm (in GI & SS)

2) Double Bolt Clamp - Sizes SL 22 to SL1275 or 3/8" to 12"

3) GI Four Bolt Clamp - 1/2" to 2"



## Pipe Clamps



## Camlock

### Camlock

**Product** - A – Female Thread x Male Camlock  
B – Male Thread x Female Camlock  
C – Hose x Female Camlock  
D – Female Thread x Female Camlock  
E – Hose x Male Camlock  
F – Male Thread x Male Camlock  
DC – Dust Cap Camlock  
DP – Dust Plug Camlock

**Material** - Aluminium, Brass, Stainless Steel

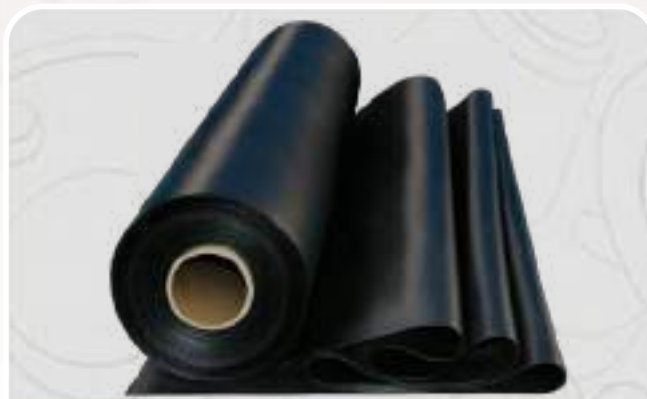
**Sizes** - 1/2" to 6"

### Rubber Sheets

**Products** - 1) Neoprene Rubber Gasket Sheets  
2) Neoprene Rubber Gasket Sheets with Cotton Insertion  
3) EPDM Rubber gasket sheet

**Thickness** - 1.5mm to 12mm

**Sizes** - 1.2Mtr x 10Mtr Roll or 18KG Roll



## Rubber Sheets



## CAF Gasket Sheets

### Compressed Asbestos Sheets (CAF)

**Products** - Asbestos Gasket Sheets

**Thickness** - 1.5mm upto 6mm

**Sizes** - 1.5Mtr x 1.5Mtr

### Non-Asbestos Sheets (CNAF)

**Products** - Non-Asbestos Gasket Sheets

**Thickness** - 1.5mm upto 6mm

**Sizes** - 1.5Mtr x 1.5Mtr



## Non-Asbestos Sheets (CNAF)



## Metallic-Graphite Sheets

### Metallic-Graphite Sheets

**Products** - Metallic-Graphite Gasket Sheets

**Thickness** - 1.5mm upto 6mm

**Sizes** - 1.5Mtr x 1.5Mtr

### Hammer Union

**Working Pressure** - 1000 to 9000 PSI

**FIG No** - FIG 50 , FIG 100, FIG 200 , FIG 206, FIG 207, FIG 602, FIG 1002 , FIG 1502

**Connection** - Threaded and Butt Weld End

**Sizes** - 1" to 12"



## Hammer Union



**Gate Valve**

### **Gate Valve**

**Material** - Cast Iron, Bronze, Cast Steel

**Flanged** - JIS 5K / JIS 10K/ JIS 16K/ JIS 20K

**Sizes** - 1/2" to 12"

### **Globe Valve SDNR**

**Material** - Cast Iron, Bronze, Cast Steel

**Flanged** - JIS 5K / JIS 10K/ JIS 16K/ JIS 20K

**Sizes** - 1/2" to 12"



**Globe Valve SDNR**



**Check Valve**

### **Check Valve**

**Material** - Cast Iron, Bronze, Cast Steel

**Flanged** - JIS 5K / JIS 10K/ JIS 16K/ JIS 20K

**Sizes** - 1/2" to 4"

### **Angle Valve SDNR**

**Material** - Cast Iron, Bronze, Cast Steel

**Flanged** - JIS 5K / JIS 10K/ JIS 16K/ JIS 20K

**Sizes** - 1/2" to 12"



**Angle Valve SDNR**



**Y-Strainer**

### **Y-Strainer**

**Material** - Cast Iron, Bronze, Cast Steel

**Flanged** - JIS 5K / JIS 10K/ JIS 16K/ JIS 20K

**Sizes** - 1/2" to 4"

### **Globe Angle Hose Valve**

**Material** - Cast Iron, Bronze

**Flanged** - JIS 5K / JIS 10K/ JIS 16K/ JIS 20K

**Sizes** - 1/2" to 4"



**Globe Angle Hose Valve**

### **Globe Hose Valve**

**Material** - Cast Iron, Bronze

**Flanged** - JIS 5K / JIS 10K/ JIS 16K/ JIS 20K

**Sizes** - 1/2" to 4"



**Globe Hose Valve**

### **Air Vent Head Valve**

**Material** - Cast Iron

**Flanged** - JIS 5K / JIS 10K/ JIS 16K/ JIS 20K

**Sizes** - 2" to 24"



**Air Vent Head Valve**



**Ball Valve**

### Ball Valve

**Material** - SS316, Cast Steel

**Connection** - NPT / SW

**Sizes** - 1/2", 3/4", 1", 1-1/4", 1-1/2", 2"

**Pressure** - 2000 psi / 3000 psi / 6000 psi / 10000 psi

### Steam Trap

**Material** - SS, CS

**Sizes** - 1/2" to 2"

**Type** - NPT, Socket-Weld, Flanged



**Steam Trap  
Threaded/Flange type**



**Pressure Gauge**

### Pressure Gauge

**Material** - CP, SS

**Connection** - Bottom & Back

**Sizes** - 2 1/2", 4"

**Pressure** - Upto 700 Bar

### Angle Valve

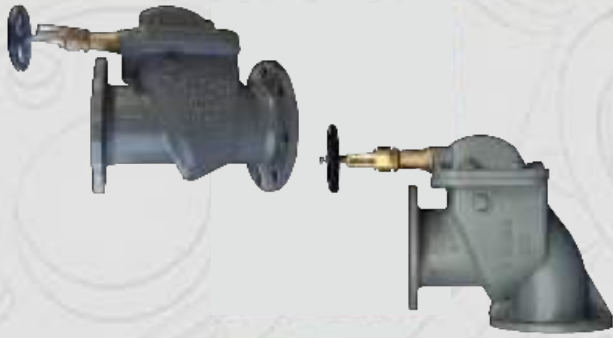
**Material** - Cast Iron

**Flanged** - PN10, PN16, 5K, 10K



**Angle Valve**





**Storm Valve**

**Storm Valve**

**Body** - Cast Steel

**Types** - Globe type & Angle type

**Flanged** - JIS 5K & 10K

**Sizes** - 2" to 6"

**Needle Valve**

**Material** - SS316

**Pressure** - 3000 psi / 6000 psi / 10000 psi

**Sizes** - 1/4", 3/8", 1/2", 3/4", 1", 1-1/4",  
1-1/2", 2"

**Lines** - FxF / MxF



**Needle Valve**

**Safety valve**

**Material** - SS316, Bronze

**Pressure** - 10 Bar / 20 Bar / 25 Bar

**Sizes** - 1/2", 3/4", 1"



**Safety Valve**

**Check valve**

**Material** - SS316

**Types** - Wafer & Disc Type

**Pressure** - 3000 psi / 6000 psi / 10000 psi

**Sizes** - 1/4", 3/8", 1/2", 3/4", 1", 1-1/4",  
1-1/2", 2"



**Check Valve**



**Forged Elbow 90D**

### Forged Elbow 90D

**Material** - SS316

**Pressure** - 3000 psi / 6000 psi

**Sizes** - 1/4", 3/8", 1/2", 3/4", 1", 1-1/4", 1-1/2", 2"

### Block Elbow 90D

**Material** - SS316

**Pressure** - 10000 psi

**Sizes** - 1/4", 3/8", 1/2", 3/4", 1", 1-1/4", 1-1/2", 2"



**Block Elbow 90D**



**Forged Tee (3-way)**

### Forged Tee (3-way)

**Material** - SS316

**Pressure** - 3000 psi / 6000 psi

**Sizes** - 1/4", 3/8", 1/2", 3/4", 1", 1-1/4", 1-1/2", 2"

### Block Tee (3-way)

**Material** - SS316

**Pressure** - 10000 psi

**Sizes** - 1/4", 3/8", 1/2", 3/4", 1", 1-1/4", 1-1/2", 2"



**Block Tee (3-way)**



**Forged Block Cross (4-way)**

## Forged Block Cross (4-way)

**Material** - SS316

**Pressure** - 3000 psi / 6000 psi

**Sizes** - 1/4", 3/8", 1/2", 3/4", 1", 1-1/4",  
1-1/2", 2"

## Block Cross (4-way)

**Material** - SS316

**Pressure** - 10000 psi

**Sizes** - 1/4", 3/8", 1/2", 3/4", 1", 1-1/4",  
1-1/2", 2"

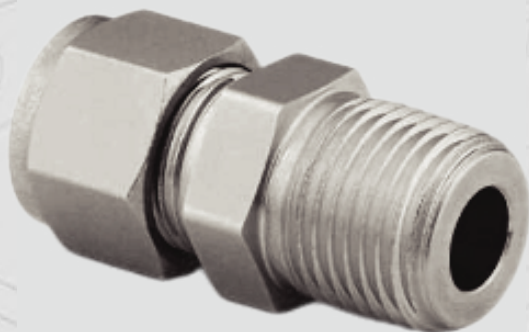


**Block Cross (4-way)**

## Male Tube Connector

**Material** - SS316, Brass

**Sizes** - 1/4"x1/4", 1/4"x1/8", 1/2"x1/4",  
3/8"x3/8", 1/2"x3/8", 1/2"x1/2",  
3/4"x1/2", 3/4"x3/8", 3/4"x3/4",  
1"x1/2", 1"x3/4", 1"x1",  
6mmx6mm, 8mmx8mm,  
10mmx10mm, 12mmx12mm

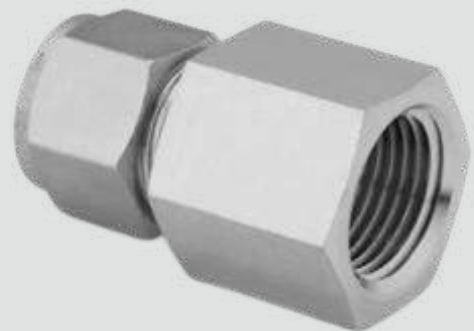


**Male Tube Connector**

## Female Tube Connector

**Material** - SS316, Brass

**Sizes** - 1/4"x1/4", 1/4"x1/8", 1/2"x1/4",  
3/8"x3/8", 1/2"x3/8", 1/2"x1/2",  
3/4"x1/2", 3/4"x3/8", 3/4"x3/4",  
1"x1/2", 1"x3/4", 1"x1",  
6mmx6mm, 8mmx8mm,  
10mmx10mm, 12mmx12mm



**Female Tube Connector**



**Union Tube Connector**

## Union Tube Connector

**Material** - SS316, Brass

**Sizes** - 1/4"x1/4", 1/4"x1/8", 1/2"x1/4", 3/8"x3/8", 1/2"x3/8", 1/2"x1/2", 3/4"x1/2", 3/4"x3/8", 3/4"x3/4", 1"x1/2", 1"x3/4", 1"x1", 6mmx6mm, 8mmx8mm, 10mmx10mm, 12mmx12mm

## Elbow Tube Connector

**Material** - SS316, Brass

**Sizes** - 1/4"x1/4", 1/4"x1/8", 1/2"x1/4", 3/8"x3/8", 1/2"x3/8", 1/2"x1/2", 3/4"x1/2", 3/4"x3/8", 3/4"x3/4", 1"x1/2", 1"x3/4", 1"x1", 6mmx6mm, 8mmx8mm, 10mmx10mm, 12mmx12mm



**Elbow Tube Connector**



**Tee Tube Connector**

## Tee Tube Connector

**Material** - SS316, Brass

**Sizes** - 1/4"x1/4", 1/4"x1/8", 1/2"x1/4", 3/8"x3/8", 1/2"x3/8", 1/2"x1/2", 3/4"x1/2", 3/4"x3/8", 3/4"x3/4", 1"x1/2", 1"x3/4", 1"x1", 6mmx6mm, 8mmx8mm, 10mmx10mm, 12mmx12mm

## Pipe Tube Clamp / Stauff Clamp

**Plates** - Stainless Steel / Galvanized

**Body** - PVC

**Sizes** - 6, 8, 10, 12, 13.5, 16, 17.2, 19, 21.3, 22, 25, 26.9, 28, 33.7, 38, 42, 48.3, 60.3



**Pipe Tube Clamp / Stauff Clamp**



**SMS Food Grade Concentric Reducer**

## SMS Food Grade Concentric Reducer

**Material** - SS316

**Connection** - Welded

**Sizes** - 1/2", 3/4", 1", 1-1/4", 1-1/2", 2", 2-1/2", 3", 4", 5", 6"

## SMS Food Grade Tee

**Material** - SS316

**Connection** - Welded

**Sizes** - 1/2", 3/4", 1", 1-1/4", 1-1/2", 2", 2-1/2", 3", 4", 5", 6"



**SMS Food Grade Tee**

## SMS Food Grade Union

**Material** - SS316

**Connection** - Welded

**Sizes** - 1/2", 3/4", 1", 1-1/4", 1-1/2", 2", 2-1/2", 3", 4", 5", 6"



**SMS Food Grade Union**

## SMS Food Grade Elbow

**Material** - SS316

**Connection** - Welded

**Sizes** - 1/2", 3/4", 1", 1-1/4", 1-1/2", 2", 2-1/2", 3", 4", 5", 6"



**SMS Food Grade Elbow**



**SMS Food Grade Butterfly Valve**

## SMS Food Grade Butterfly Valve

**Material** - SS316

**Connection** - Welded, T-Bolt Type

**Sizes** - 1/2", 3/4", 1", 1-1/4", 1-1/2", 2", 2-1/2", 3", 4", 5", 6"

## SMS Food Grade Clamp

**Material** - SS316

**Connection** - Welded

**Sizes** - 1/2", 3/4", 1", 1-1/4", 1-1/2", 2", 2-1/2", 3", 4", 5", 6"

**Types** - Ferrule Clamp, TH7 Clamp, TH7H Clamp



**SMS Food Grade Clamp**

## SMS Food Grade Ball Valve

**Material** - SS316

**Connection** - T-Bolt Type

**Sizes** - 1/2" to 4"



**SMS Food Grade Ball Valve**

## Straub Coupling / Pipe Repair Clamp

**Material** - SS304

**Model** - RCH-S

**Sizes** - 1", 1-1/4", 1-1/2", 2", 2-1/2", 3", 4", 5", 6", 8", 10", 12"



**Straub Coupling / Pipe Repair Clamp**



## Storz Coupling

### Storz Coupling

**Material** - Aluminum

**Connection** - Hose / Male / Female

**Sizes** - 2", 2 1/2", 3", 4"

### Perrot, Miller & Bauer Coupling

**Material** - Galvanized Steel

**Sizes (Perrot)** - 2", 3", 4", 6"

**Sizes (Miller)** - 2", 3", 4", 6", 8", 10", 12"

**Sizes (Bauer)** - 2", 3", 4", 6", 8"



## Perrot, Miller & Bauer Coupling



## Hose Clips (JCS HI-GRIP)

### Hose Clips (JCS HI-GRIP)

**Material** - SS304 / Galvanized Steel

**Sizes** - HG-12, HG-16, HG-20, HG-22, HG-25, HG-30, HG-35, HG-40, HG-45, HG-50, HG-55, HG-60, HG-70, HG-80, HG-90, HG-100, HG-120, HG-140, HG-160

### Water Meter

**Material** - Brass

**Sizes** - 1/2" to 1"



## Water Meter

# SEALING SOLUTIONS

## Gaskets & Packings

Manufacturers of Soft Cut Flange Gaskets

In **Neoprene Rubber**, **EPDM Rubber**,  
**Compressed Asbestos Fibre (CAF)**,  
**Compressed Non-Asbestos Fibre (CNAF)**,  
**Teflon**, **Graphited / Metallic Fibre Gaskets**

In **Full Face (FF)** and **Raised Face (RF)** Type or any  
other shape as per drawing or sample

**Thickness from 1mm to 10mm**



**Raised Face Gaskets**



**Full Face Gaskets**



WEBSITE



LOCATION

**Sunel Wala Building Materials Trading Co. LLC**

Baniyas Square, Hardware Market, Deira, Dubai P.O. Box - 65581

**Tel. :** +9714 238 5652 / +9714 238 5752

**Fax :** +9714 238 5662 **Mob. :** 971 507 481 772

**Email Id :** info@swbm-fittings.com **Website :** www.swbm-fittings.com