



COMPANY PROFILE



Royal Classic
Contracting & General Maintenance



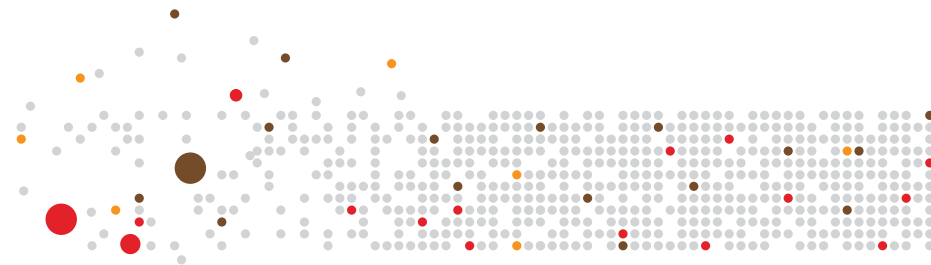
+971 02 5515345



info@royalclassic.ae



www.royalclassic.ae



ABOUT US

Royal Classic Contracting & General Maintenance is specialized in the field of Construction & General Maintenance, Interiors and Fit-outs, MEP general service, Infrastructure services, Waterproofing works, structural fabrication & erection etc. The Company was established in 2005 and is an ISO 9001:2015, 14001:2015, 45001:2018, accredited, ICV certified company (ADNOC. Reg. NO. 0010012011) registered in Abu Dhabi. The company has a proven track record of delivering several high profile solutions

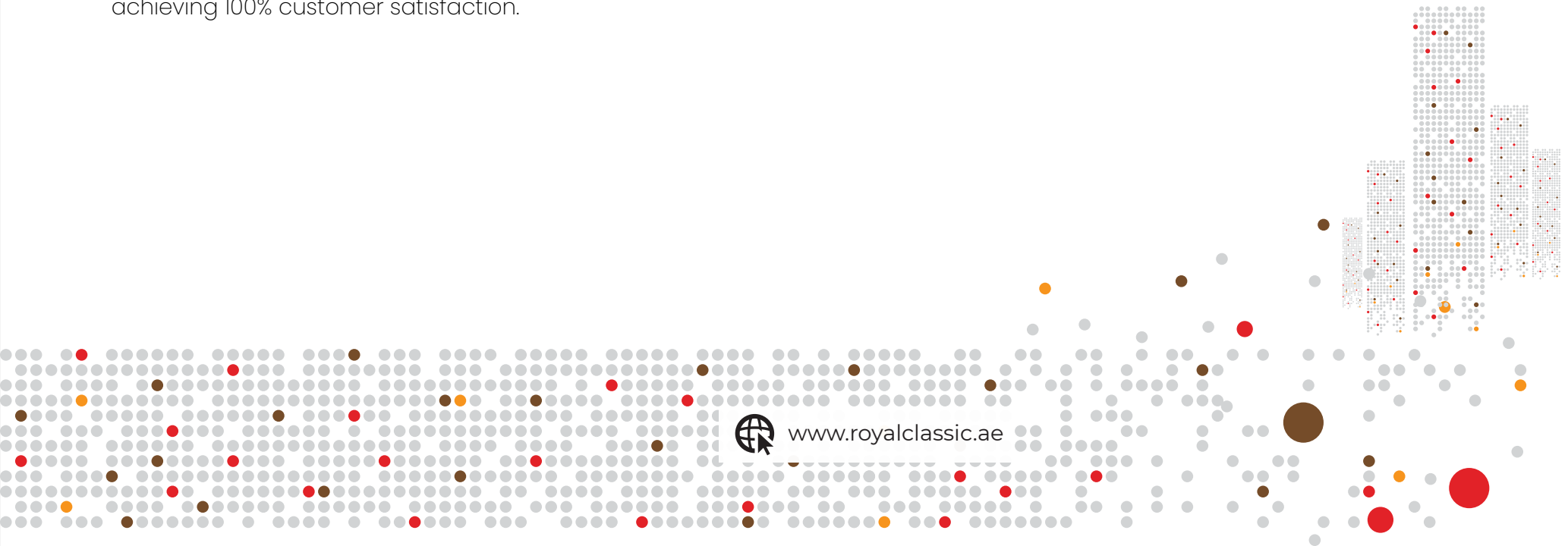
Royal Classic render services like procurement, construction, and maintenance & innovative services to government and private sector clients in diverse industries. For more than a decade, clients have trusted us to successfully, ethically, and safely complete their capital projects.

Building and maintaining relationships with our customers is at the heart of our business and we have a planning and management style that is consultative and systematic.

We are a pioneer in maintaining Health & Safety, quality control, environmental management system, customer relations, and achieving 100% customer satisfaction.



www.royalclassic.ae



MESSAGE FROM DIRECTORS

It has been more than 15 years since, we started a small maintenance company in the name of Royal Classic Contracting & General Maintenance and now the company has transformed into diversity in civil works, covering the full spectrum of the market and provide services to residential, commercial and industrial clients.

There are many ways to measure a company's success. In our view, however, a truly successful company is one that finds a way to return some of its rewards to the UAE economy and the region. We feel a company cannot consider itself truly successful unless it makes an active effort to give back a fruitful result.



The hard work, dedication, punctuality, quality of service, and commitment across the company by us and our team during the long journey of more than 15 years in the Construction & Maintenance Industry had paid off to achieve many goals.

Our values are core to our business, and we take great pride in investing knowledge and experience in business ideas, enabling people to realize their dreams. We have a strong support network that encourages dynamic partnerships, creating diversified access to support and expertise. Our deep-rooted knowledge of the region provides an ideal fit with entrepreneurs and new business enterprises coming from different cultures with which we maintain long term partnerships.

We have a strong and skilled professional team, our biggest wealth in our opinion is to have international talent blended with local talent under one roof. Most of the successful businesses have a proper management and the right people to lead. The compelling combination of our values, relationships, market focus, and sound business-sense place us in a strong position to maximize each business opportunity, creating further growth and development and thus bringing us back around in the circle of sustainability- giving back to the community.

Our heartfelt wishes to all our customers and welcome to Royal Classic.



www.royalclassic.ae

VISION

- ◆ Our vision is to be the preferred choice of Engineering Design, Construction, and Maintenance in the Middle East.
- ◆ Conduct ourselves with integrity and have the competence to tackle the increasing scale, evolving complexity of projects.
- ◆ Maintain the life cycle of the building as per the design standard following Government laws.
- ◆ Provide engineering values to the clients



MISSION

- ◆ We aim to be the best international technology-driven EPC Contractor, providing clients with the best and efficient services ranging from complex engineering solutions to project management.
- ◆ To establish and maintain professionalism in the construction and building maintenance sector.
- ◆ Improvement of infrastructure through meaningful innovation.

CORE VALUES

We want our decisions and actions to demonstrate these values. We believe in our values and practice creating long-term benefits for our employees, suppliers, and the communities whom we serve



- ▶ We act with integrity in all our activities
- ▶ We provide Leadership as a company and as individuals
- ▶ We deliver Customer Satisfaction
- ▶ We provide high-quality services
- ▶ We provide Competitive pricing

- ▶ Diverse activities and depth of experience
- ▶ Proven planning and construction management skills
- ▶ Reliable highly skilled workforce
- ▶ Ability to work in operational environments
- ▶ A culture of quality, safety, delivery and integrity



www.royalclassic.ae

QUALITY ASSURANCE POLICY

We strive to provide our clients with efficient services, which meet and exceed their expectations. We are committed to continuous improvement and have established a quality management system that provides a framework for measuring and improving our performance, enabling us to deliver high quality work at every stage of a project, from start to delivery.

The system incorporates the following elements:

- **Regular gathering and monitoring of client feedback including complaints and weekly project meetings at the site office and meeting with Clients as per their requirements.**
- **Selection of training providers/associates against set criteria**
- **Staff training (external and on-job)**
- **Selection of suppliers**
- **Monitoring the performance of partners and suppliers**
- **Providing up-to-date deliverables**
- **Full project management delivery**
- **Programming internal review**
- **Regular management reviews**
- **Communication with all stakeholders**

This quality management system is available on request, and included in all new staff 'welcome packs'. Our creative team is ultimately responsible for the quality, but all employees are encouraged to be accountable for individual projects. This statement and the methodology are reviewed annually. Clear communication by a Senior Management team for each project is headed up by our creative team. They are jointly responsible for the whole project at every stage. This ensures rapid and effective response to urgent needs as well as assurance that work will be planned, implemented, and communicated coherently. The dedicated creative team manages and carries out all creative and development work. All work will be discussed and managed within the team in consultation with the Client. Rigorous documentation by all staff, each project has a title, reference number, and dedicated digitalized documentation that tracks and builds the history of the work.

It's contents include all or some of the following, as appropriate:

- **Contact details of all those involved in the project**
- **Kick-off meeting**
- **Project plan**
- **Document submittals**
- **Site Toolbox and induction reports**
- **Copies of reports and site photographs**
- **Notes, sketches, laser proofs of design work**
- **Reference and research material**
- **Estimates**
- **Expense logs**





ENVIRONMENT, HEALTH & SAFETY

Purpose:

This manual defines the scope of Royal Classic Health, Safety Management System (HSE MS), and provides a linkage of system documents to the various elements of ISO 45001 : 2018

The principal elements of the system described in this manual are:

- HS Policy
- Hazards and Risks
- Legal and Other Requirements
- HS Objectives
- HS Management Programs
- Organizational Structure and Responsibility
- Communication
- Document Control
- Operational Control
- Crisis Management
- Monitoring and Measurement
- Incidents and Corrective and Preventive Action
- Records
- HS MS Audit
- Management Review



SERVICES OFFERED

- ◆ EPC Projects
- ◆ Structural Steel and Building Construction
- ◆ Design and construction of Industrial Buildings and Maintenance
- ◆ Building contracting & general maintenance services

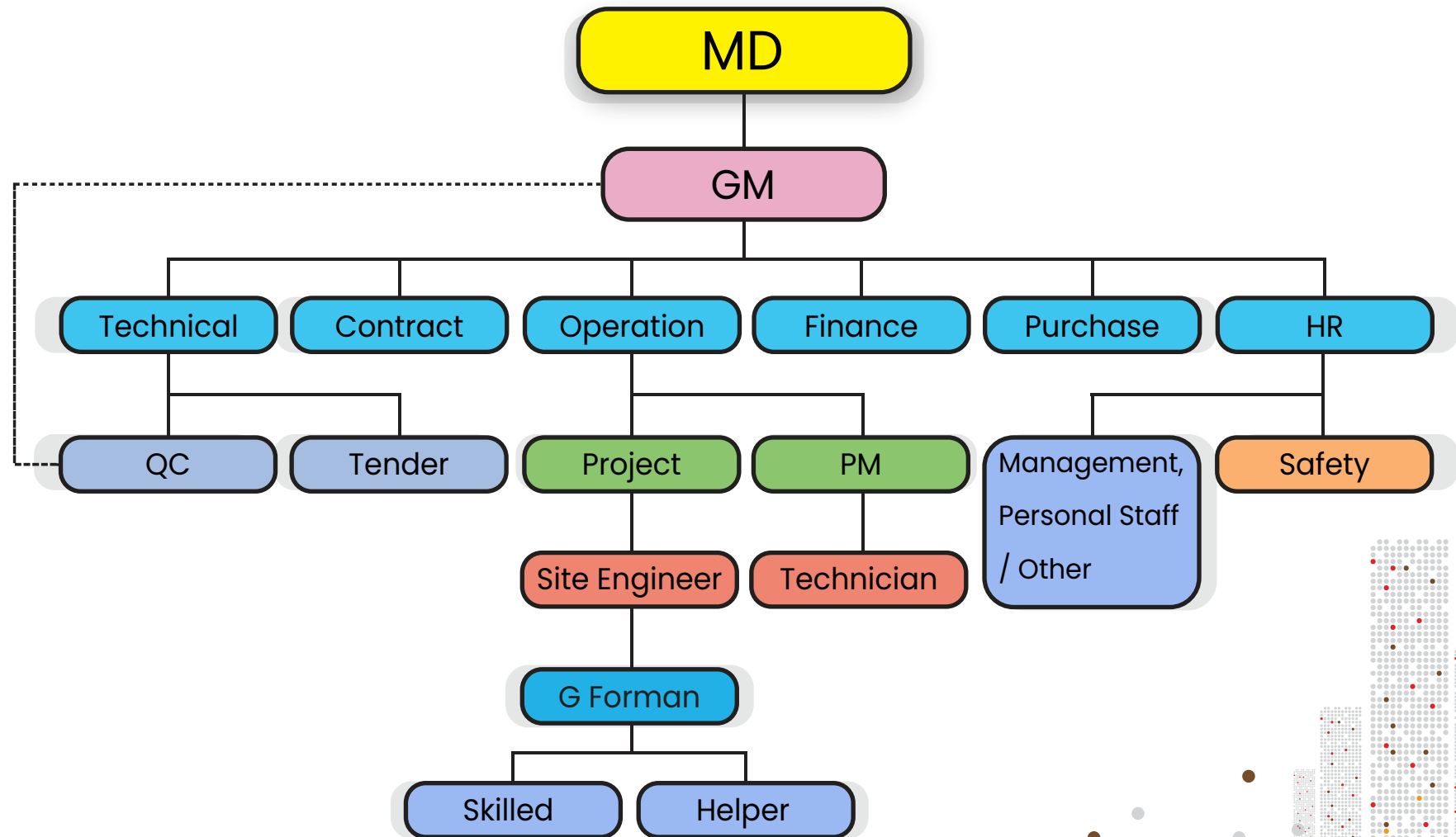


- ◆ All kinds of waterproofing works
- ◆ Concrete repairing and floor epoxy systems
- ◆ Aluminum & Glass works
- ◆ Infrastructure works
- ◆ Finishing works



www.royalclassic.ae

ORGANIZATION CHART



ONGOING PROJECTS

S.No	NAME OF THE COMPANY	LOCATION	PROJECT VALUE
1	FORTUNE ENGINEERING & ENERGY SERVICES – (EPC FOR UPGRADE OF OIL EXPORT FLOW MEASUREMENT IN ADNOC FIELDS TO FISCAL SERVICE QUALITY)	WESTERN REGIONS – UAE	AED # 14 MILLION
2	PRESIDENTIAL GUARD – INFRASTRUCTURE WORKS	ALL OVER UAE	AED # 10 MILLION
3	HUAWEI – ETISALAT DATA CENTRE –CIVIL WORKS	AL AIN	AED # 1 MILLION
4	ETIHAD RAILS – UTILITY CORRIDOR/UNDER PASSAGE/BRIDGES/ STRUCTURE REPAIRING WORKS	WESTERN REGIONS – UAE	AED # 2 MILLION
5	MINISTRY OF INTERIORS (LAST 1 YEAR)	ALL OVER UAE	AED # 2 MILLION
6	ENOVA FACILITIES MANAGEMENT – AL BATEEN AIRPORT	ABU DHABI	AED # 500,000
7	JUMA AL MAGID – CIVIL WORKS	AL AIN	AED # 3 MILLION

COMPLETED PROJECTS

S.No	NAME OF THE COMPANY	LOCATION	PROJECT VALUE
1	TATA [PROJECT – EPC CONSTRUCTION OF AVIATION OF FUEL DEPOT – AL BATEEN EXECUTIVE AIRPORT	ABU DHABI	AED # 16 MILLION
2	ETIHAD RAILS – UTILITY CORRIDOR/UNDER PASSAGE/BRIDGES/STRUCTURE REPAIRING WORKS	WESTERN REGION – UAE	AED # 1.5 MILLION
3	MINISTRY OF INTERIORS	ALL OVER UAE	AED # 2 MILLION
4	COMMAND OF MILITARY WORKS	ALL OVER UAE	AED # 1 MILLION
5	AL FORSAN INTERNATIONAL & SPORTS RESORTS – ASPHALT RECTIFICATION WORK	ABU DHABI	AED # 1.5MILLION
6	VEOLIA BASICS – SUPPLY AND INSTALLATION OF R0 WATER PIPELINE WORKS	ABU DHABI	AED # 350,000.00
7	ADEEB FACILITY MANAGEMENT – Department of transport Office renovation work	AL AIN	AED # 1 MILLION
8	JUMA AL MAJID – CIVIL WORKS	ABU DHABI	AED # 4 MILLION
9	ABU DHABI AIRPORT (ADAC)–Civil Work	ABU DHABI	AED # 2 MILLION
10	TAWAZUN INDUSTRIAL PARK – WATERPROOFING AND MAINTENANCE WORKS	ABU DHABI	AED # 200,000.00
11	GLOBAL VILLAGE – WATERPROOFING	DUBAI	AED # 150,000.00





Royal Classic

Contracting & General Maintenance

M - 02 , Building # 119 , Mezzanine Floor , Shabia - ME - 09 , Musaffah , Abu Dhabi.

Landmark : Opposite : Public International English School (Bhavans)

P.O Box # 107047 , Abu Dhabi

Mob # +971 55 849 9231 , +971 55 747 1084

Tel : (02) 551 5345 Fax : (02) 552 1133

<https://maps.google.com/maps/search/ME%3A9%20BLDG-119%20%20Mussafah%20Shabiya/@24.34054183959961,54.531898498535156,17z?hl=en>



+971 02 5515345



info@royalclassic.ae



www.royalclassic.ae