



STEEL INSULATED ROLLING SHUTTER

Electrically operated Extruded Steel Insulated Roller Shutter as manufactured and supplied by M/s Guangzhou Hoful Roller Shutter Door Factory - PRC

Door Specification:

- Slats manufactured by Roll-forming process from prefinished Steel which are pre-painted with UV resistant paints.
- Insulation is by means of injection of a polyurethane foam core during the forming process.
- Density of the insulation core is kept constant to maintain a high standard of profile.
- Roller Shutter Curtain is formed by interlocking the Steel slats and locking them in place by Die-cast nylon end-caps.
- The Shutter curtain is mounted on a round barrel of 5" diameter and suitable thickness depending on width of the opening.
- Electrically operated by heavy duty motors capable of lifting 600 kg. Motor is equipped with a hand-chain for emergency manual operation
- The Roller Shutter curtain's vertical movement is in extruded Steel Guides (Mill Finish) with double brushes on both inside surfaces to ensure quiet movement and minimize atmospheric transfer through it.
- Activation is by one set of 3-station push-button (open/ stop/ close) and 2 hand-held Remote Transmitters
- Roller Shutter visible components including curtain and Bottom Rail are finished in white (close to RA L 9010).
- Bottom Bar is manufactured of extruded Steel Hollow Profile with Rubber seal to accommodate for minor irregularities in FFL.





OVERHEAD SECTIONAL DOOR

Door Panels	:	Double sheet steel with injected insulation Pre-designed with Horizontal grooving and stucco type embossing, exterior and interior. White color similar to RAL 9010. Intermediate joints between sections.
End Caps	:	Galvanized steel end with 1.2mm thickness fixed both sides of the panel.
Door Finishing	:	RAL 9010 any other color is required it will be available at extra cost.
Bottom Retainer:		Extruded Aluminum bottom retainer fitted on the bottom panel
Weather seal	:	EPDM Bottom weather seal
Roller	:	Heavy Duty nylon rollers
Hardware	:	Galvanized Side hinges, intermediate hinges, top brackets, bottom Brackets, cable drums, cables, End brackets, Solid shaft, 15,000 Cycle Heavy duty springs
Track System	:	2" hardware Standard Lift
Operation	:	Electrically operated by s Industrial Motor, 400V 3 PH 50Hz, make: Marentec, Germany with built in manual override chain facility in case of power failure.
Control	:	Standard control panel with push button control
Safety Photocell:		Pair of photocell will be preventing the door from closing and reversing the door when there is an obstruction along its path of travel.





SOLID SLAT ROLLING SHUTTER

Solid Slat Roller Shutters Series A100 as manufactured and supplied by our principals M/s Ascot Doors Limited – UK, Motor as manufactured and supplied by M/s Hoful Barrel assembly is locally fabricated.

Specifications

Barrel Assembly:	Constructed from steel tube 6" in diameter and 3 mm thick depending on door dimension (The Barrel Assembly is fabricated locally)
Curtain:	Constructed from 1.0 mm thick x 75mm deep curved galvanized steel interlocking laths, manufactured to BS EN 10142 with a protective zinc coating of 275g/m ² to form a single skin curtain. The curtain is finished with a galvanized steel 'T' section bottom rail.
End-plates:	Formed from minimum 5mm thick mild steel to take the barrel and weight of the shutter.
Guides:	Constructed from 3mm x 65mm galvanized steel heavy duty guide channels, bolted existing angle sections.
Operation:	Electrically operated by ECR600 Motors (600kg capacity) and activated by 1 unit 3-station push-button per door. Motors are equipped with built-in Chain-Hoist for emergency manual operation.
Finish:	Galvanized to BS EN 10142 with a protective hot dipped zinc coating of 275 g/m ² finished to a normal spangle. Curtain, Guide Channels and Bottom Bar to have a polyester powder coat finish in any standard non-metallic RAL color..





WINDOW SHUTTER

Steel Insulated Roller Shutter as manufactured and supplied by our principals from Turkey.

- Profile: 77mm,
- Double wall insulated 20 mm thickness,
- Wall thickness: approximately 0.50mm
- Color: White
- Guide channel: extruded Aluminum, with box for bracket
- Equipped with balancing and Manual System.
- Electrically operated with Tubular Motor and included 2 No's remote control.





POLY CARBONATE SHUTTER

Polycarbonate Roller Shutter as manufactured and supplied by our principals M/s Dynamicway, Hong Kong.

Door design: Newlook is always custom built in our modern ISO9001-2000 certified factory, which combines the transparency and strength of polycarbonate with stainless steel tube. It is a popular design for applications which need security as well as transparency. Newlook offers top security together with the ultimate excellent visibility.

Technical Specifications:

Transparent Shutter Link

Material: Unbreakable polycarbonate Slat.

Dimensions: width – 400mm; height – 95 mm; thickness – 3mm;

Anodized Aluminum Coupling Tubes

Material: Stainless Steel

Dimensions: Outer diameter – 16mm, internal hole diameter of 12.8mm; thickness – 1 mm.

Guide Channels

Made of heavy duty extruded aluminum “U” guide rail, 60*50*2.0, with brush strip to make the rolling shutter run more quietly powder-coated in standard non-metallic RAL color.

Barrel Assembly

Constructed from steel tube 5” in diameter and 5 mm thick depending on door dimension.

Operation

Electrically operated by ECR600 Motors (600kg capacity) and activated by 1 Unit 3-station push-button (Open/ Stop/Close) per door. Motors are equipped with built-in Chain-Hoist for emergency manual operation

Bottom Rail



Arabian Gulf Door Establishment
P.O. Box 77654, Dubai, United Arab Emirates.

Tel : +971-4-2674747

Fax : +971-4-2670003

Email : info@agdest.com

Made of extruded aluminum, 106*20mm, height*depth, 1.4 thickness, standard color /powder coated in standard non-metallic RAL color – with black weather seal.



Arabian Gulf Door Establishment
P.O. Box 77654, Dubai, United Arab Emirates.

Tel : +971-4-2674747

Fax : +971-4-2670003

Email : info@agdest.com





Aluminum Grille Shutters

Door Curtain along with Guide channels, Bottom Rail etc. as supplied by our principals M/s Dynamic Way – Hong Kong and Barrel Assembly which is locally fabricated

Specifications

Barrel Assembly:	Constructed from 5" diameter mild steel tube. Tube and shaft sized according to opening size and door weight.
Curtain:	Constructed from Aluminum horizontal tubes mounted on horizontal solid MS rods which in turn are linked to each other with vertical Aluminum links to form a straight brick pattern Grille.
End-plates:	Formed from minimum 6mm thick mild steel to take the barrel and weight of the shutter.
Guides:	Constructed from 50mm x 50mm x 3mm galvanized steel heavy guide channels
Operation:	Electrically operated by EC600 Motors (600kg capacity) and activated by 1 unit 3-station push-button per door. Motors are equipped with built-in Chain-Hoist for emergency manual operation.
Finish:	Aluminum horizontal tubes and vertical links are in anodized finish. Guides are factory finished in gray, and Inverted 'T' Galvanized Bottom rail will be finished in standard RAL non-metallic color of client's choice.

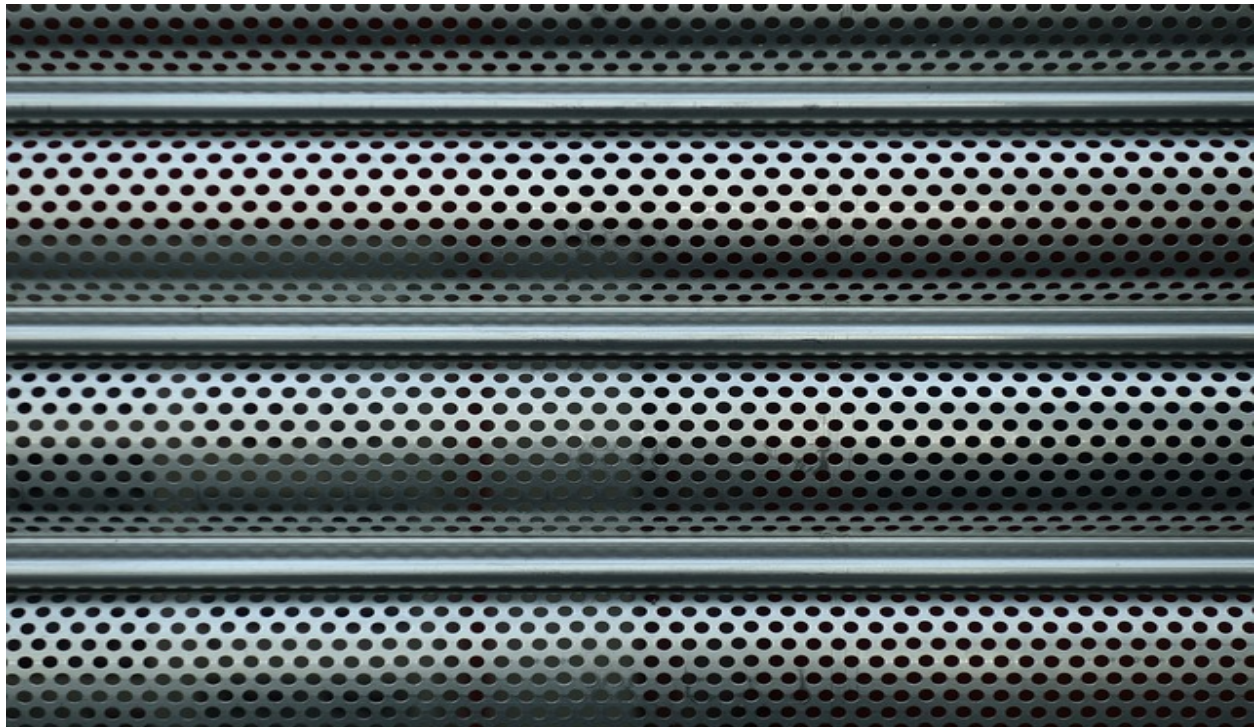


Electrically Operated Perforated Roller Shutters:



Specifications

Barrel Assembly:	Constructed from steel tube 6" in diameter and 3 mm thick depending on door dimension (The Barrel Assembly is fabricated locally)
Curtain:	Constructed from 1.0 mm thick x 88mm deep curved perforated galvanized steel interlocking laths, manufactured to BS EN 10142 with a protective zinc coating of 275g/m ² to form a single skin curtain. The curtain is finished with a galvanized steel 'T' section bottom rail.
End-plates:	Formed from minimum 5mm thick mild steel to take the barrel and weight of the shutter.
Guides:	Constructed from 3mm x 65mm galvanized steel heavy duty guide channels, bolted existing angle sections.
Operation:	Electrically operated by ECR800 Motors (800kg capacity) and activated by 1 unit 3-station push-button per door. Motors are equipped with built-in Chain-Hoist for emergency manual operation.
Finish:	Galvanized to BS EN 10142 with a protective hot dipped zinc coating of 275 g/m ² finished to a normal spangle. Curtain, Guide Channels and Bottom Bar to have a polyester powder coat finish in any standard non-metallic RAL color.



Continuous Profile Shutter



Standard Features:

- 0.5 mm Steel Galvanized Profiled / Continuous Door Curtain, Lt. Industrial Duty Grade.
- Finish: White or Beige
- Weather seal is durable finished rubber to prevent the dirt.
- Edges stitched with nylon felt for smooth and noiseless operation.
- Grease or Lubrication is not required.
- Galvanized Guide Channels.
- Aluminum Bottom Rail
- Manually operated

Sectional Garage Door

The panels are made from two sheets of galvanized steel, pre-lacquered to give high resistance to rusting. High density polyurethane foam is injected into the space between them, thus providing a high level of thermal and acoustic insulation and great mechanical resistance.

Technical features

Make	:	RD DOORS, SPAIN.
Panel	:	Double Skin Insulated Aluminium.
Finish	:	Standard.
Thickness	:	40 mm.
Sheet thickness	:	0.7 mm.
Thermal Values	:	(R=18.05 U=0.054)
Operation	:	Electrically operated with 2 no's Remote (TOP Motor, Ditec- Italy).



HIGH SPEED DOORS.

Model D-311 LF as manufactured according to **EN13241-1** and supplied by our principals **M/s DYNACO Entrematic, Belgium.**

Opening speed	:	up to 1.2 m/s (optional 2.0 m/s)
Closing speed	:	0.5 m/s
Structure	:	Folded steel 37 x 52 x 3 mm, galvanized before cutting and folding.
Drum	:	Steel - Ø 102 x 2 mm.
Side guides	:	Reinforced polyethylene (PE-UHMW1000)
Motor	:	2 poles, without brake. Power-0.75 kW, IP rating - IP 65.
Control box	:	DYNALOGIC provided with: Circuit breaker, general divider, and adjustable timer, push button for opening and reset and emergency stop. IP rating: IP 54. Frequency inverter.
Safety Features	:	Infrared Barrier and Wireless Detector at the bottom.
Power supply	:	Single phase 230 V - 14 A.
Frequency	:	Frequency: 50-60 Hz
Advised operating Temperature	:	+ 5 °C up to + 40 °C
Available colors	:	Yellow: RAL1003, Green: RAL6005, Orange: RAL2004 Grey: RAL7035, Red: RAL3000, White RAL9010, Blue RAL5002, Black RAL9005.
Thermal resistance	:	6.02 W/m ² K
Cycles	:	1,000,000 cycles.



DYNACO M2 ALL WEATHER

- High Speed Operation : Up to 2,4 m/s depending on the size Closing speed 1,2 m/s
- Patented "Push Pull" Technology : Unique door drive system.
- Superior Seal, Wind Resistant : Patented side frame assembly. No blade nor brush system
Up to wind load class 5.
- Crash Forgiving And Self-Reinserting
Without Intervention : The curtain automatically reinserts itself when dislodged.
No repair costs, no production down time.
- User Safety : Flexible curtain without rigid elements.
- Comfort Of Use : DYNACO wireless detector at the bottom.
- Advanced Drive : Frequency driven motor and encoder for smooth operation.
Wearable elements are reduced to a minimum.
- Dynalogic Control Box : User-friendly control box with self-diagnosis.

Dynalogic Control Box
CONFORM TO EN13241-1

SPECIFICATION

- Opening speed : up to 2.4 m/s
- Closing speed : 1.2 m/s
- Structure : Galvanized Steel of 80 x 40 x 3 mm. Option: Stainless Steel
- Covers : Synthetic Material, colour aluminium+ black. Full covers standard
- Drum : Steel - Ø 102 x 2 mm.
- Side guides : Reinforced polyethylene (PE-UHMW1000) with springs. Side
Guides reinforced over the total height
- Motor : 4 poles, without brake. Power-1.5 kW, IP rating- IP 65.
- Control box : DYNALOGIC provided with: Circuit breaker, general divider,
and adjustable timer, push button for opening and reset and
emergency stop. IP rating: IP 54. Frequency inverter.



Safety Features : Infrared Barrier: 300 mm from the floor. Wireless Dynaco detector (WDD).

Power supply : Single phase 230 V - 18 A.



DOCK LEVELER

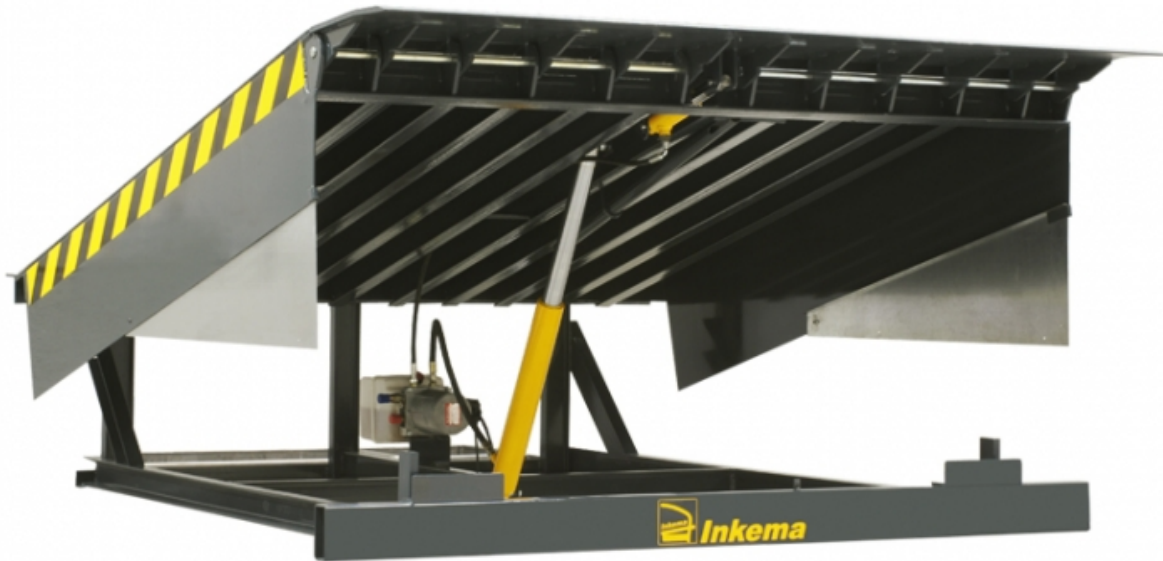
Technical Specifications:



Product : Hydraulic Dock Leveler
Manufacture : Inkema, Spain

Specifications

Platform Size : 2500mm L X 2000mm W
Pit Depth : 600mm
Lip length : 400mm
Lip Operation : Swing Lips
Control Panel : Wall Mounted push button
Operation : By Hydraulic
Capacity : 6 ton
Dock Bumpers : 2 Nos Provided



DOCK SHELTER

Supply & Installation of Mechanical DOCK SHELTER (PMV) manufactured and supplied by our principals Promstahl GmbH, Germany

Specifications

Model : Mechanical Dock Shelter (PMV 2)



Nominal width	3450mm
Nominal Height	3600mm
Nominal Depth	600mm
Top Curtain	1000mm
Side Curtain	700mm
Curtain Thickness	3mm
Curtain weight	3800 g/m ²
Warning stripes	White
Drainage	integrated rain channel
Installation mat	concrete



GATE BARRIER

Traffic Barrier System, as manufactured and supplied from our Principals, M/s.DITEC S.P.A - ITALY, CE manufactured in compliance with European Standards. The package consisting the following:

Entry/Exit- Opening by Push Button & Automatic Closing By Timer



Arabian Gulf Door Establishment
P.O. Box 77654, Dubai, United Arab Emirates.

Tel : +971-4-2674747

Fax : +971-4-2670003

Email : info@agdest.com

MODEL	ITEM DESCRIPTION	QTY.
QIK 7EH	TRAFFIC BARRIER UNIT (Gear Motor & Control Panel Accessories)	1 Nos.
QIK B47	RECTANGULAR ALU.ARM (6m.)	1 Nos.
QIK M3	SPRING FOR ARM	1 Nos.
QIKC	REFLECTIVE STICKERS	1 Nos.
XEL 2	SAFETY PHOTOCELL	1 pairs.
XEL 5	KEY SWITCH/PUSH BUTTON	1 Nos.
LAMP	FLASHING WARNING LAMP	1 Nos
GOL R	RECEIVER CARD	1 No
GOL 4	REMOTE	1 No





SLIDING GATES:

SLIDING GATE

Gate:

- Steel tubes of 100mm x 100mm in vertical and horizontal
- Nylon Roller Wheel
- Track set fixed on the floor

Motor:

RUN1000	NiceSlidingGate Motor 1000 KG
RACK1M	Rack 1 Meter X 4
ELB	Flashing Light
EPMB	Photocell
SMXI	Receiver
Remote	2 Channel Remote
EKS	Key switch

