

## TECHNICAL SPECIFICATION

Gravity steel can provide design, technical specification, detailed drawings with installation layout plans & method statement for the installation. The technical team is in constant touch & results are monitored meticulously.



# GRAVITY STEEL

## FABRICATION L.L.C



## LIST OF MACHINERY & OTHER FACILITIES

### A) MACHINE SHOP

1. 6-1/2 FEET LATHE - 1 Nos
2. RADIAL DRILLING MACHINE -32 mm CAP-1 Nos

### B) FABRICATION FACILITIES

1. SHEARING MACHINE- 15 mm CAP-1 Nos
2. ROLLING MACHINE- 15 mm X 2.5 MTS CAP-1 Nos
3. RECTIFIERS
4. TIG WELDING MACHINE

### C) HANDLING FACILITIES

1. 5 TON GANTRY-2 Nos
2. 2 TON FORK LIFT -1 Nos

### D) INSPECTION FACILITIES

1. INSIDE MICROMETERS - UPTO-500 mm.
2. OUTSIDE MICROMETERS - UPTO-300 mm.
3. VERNIER UPTO - 600 mm.

## STAINLESS STEEL PRODUCTS

Gravity Steel is also dealing with stainless steel products.

- i) **Stainless Steel Cladding (Skirting) of Wall & Column.**
- ii) **Handrails**
- iii) **Stair-case Handrails, Ladders.**
- iv) **S.S. Glazing Works.**
- v) **Canopies.**
- vi) **Stainless Steel Brackets.**
- vii) **Stainless Steel Trolley.**
- viii) **Stainless Steel Turnstiles.**
- ix) **Grills & Barriers.**

Stainless steel Finishing in Mirror Polished, Satin Grain, Polished PVD. Its prime objective is to offer a finished product competitively priced.



## GRAVITY STEEL FABRICATION L.L.C.

P.O. Box : 32125, Dubai - United Arab Emirates Tel. : +971 - 4 - 3413657, Fax : +971 - 4 - 3413656  
E-mail : gravitysteel@gmail.com

## INTRODUCTION

Gravity steel is established in 2006 and is having fabrication workshop facilities in Al-Quoz Industrial area, in Dubai, United Arab Emirates. Gravity Steel Fabrication LLC. Factory is a pioneering specialized establishment & comes in the vanguard of the leading establishments in field of fabrication of all types of metal. We are having the technical backup and market experience of 20 years with the men who are handling these activities.

We are supplying perimeter security fencing system as per client requirement. Gravity Steel also undertakes the job right from design, manufacture, installation & also give guarantee for our quality product.

## PRODUCTS

We are manufactures fencing components, accessories, fence panels, double single leaf swing gates, Sliding gates, and steel Grills & Hand rails. Its prime objective is to offer a finished product competitively priced. We are supplying following finished product



Single Leaf Sliding Gate

- ANTI-INTRUDER CHAIN LINK FENCING SYSTEM
- WELDED MESH FENCING SYSTEM
- ALUMINIUM GATES, GRILLS & BARRIERS
- WROUGHT IRON FENCING, GATES & GRILLS



- POLE BARRIERS. AND FENCING SYSTEM.
- ANIMAL (CAMEL) GRID.
- CAMEL RACE TRACK FENCE.
- WELDED GRATING FENCE



We are also dealing with Galvanized & PVC coated GABIONS, GEO-TEXTILE from reputed manufacturer who can support with the design & technical backup generally used in land stabilization, coastal protection, ground improvement with complete engineering solutions.



الجاذبية للحداثة (ش.ذ.م.م.)  
GRAVITY STEEL FABRICATION L.L.C

P.O. Box : 32125, Dubai - U.A.E., Tel.: +971 4 3413657, Fax : +971 4 3413656.

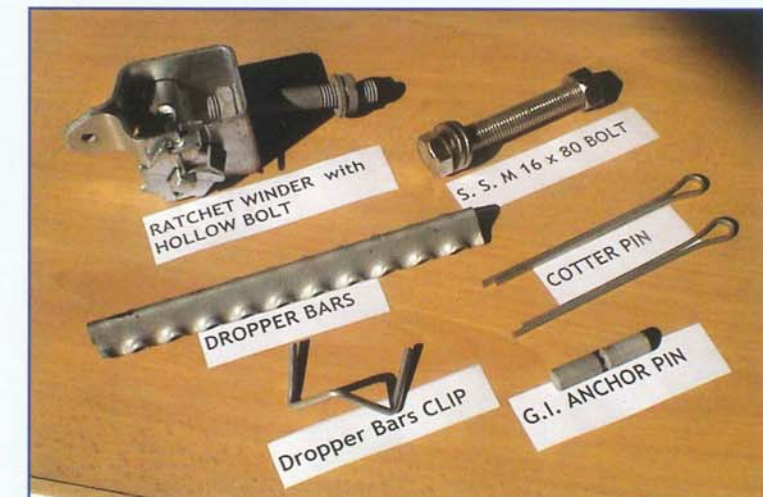
E-mail : gravity7@eim.ae

## Gravity Steel's Priority

- Client Satisfaction
- Quality
- Economy
- Supply as per specification

We supply as per International specification

- ◆ BS / EN
  - ◆ ASTM
  - ◆ DIN
- Standards



# PROJECT'S EXECUTED



**EMAL Project**



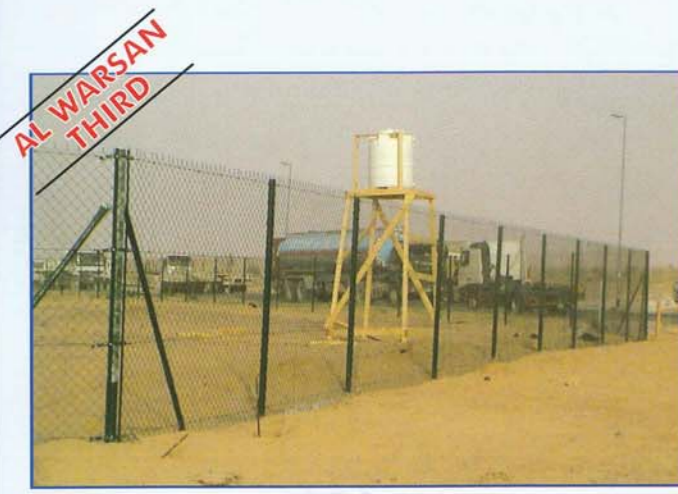
**DUBAI METRO**



## Gates:

We manufacture, supply & Installation various types of Gates & Grills, as per Client requirement.

- Double Leaf swing Gate - Manual & Automatic.
- Double Leaf & Single Leaf sliding Gates Manual & Automatic.
- Personnel Gates
- Emergency Gates



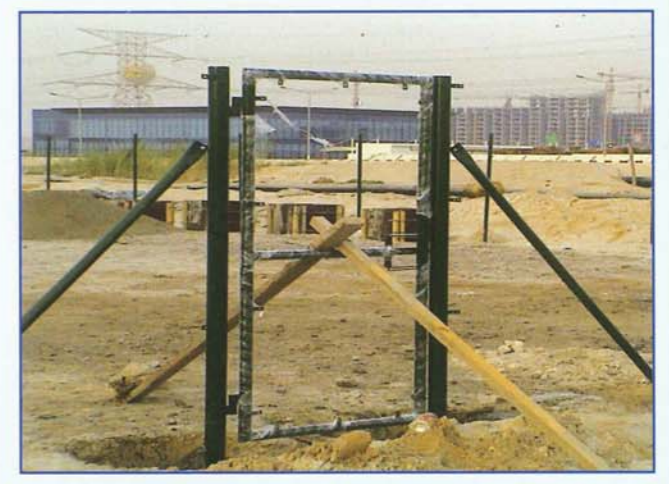
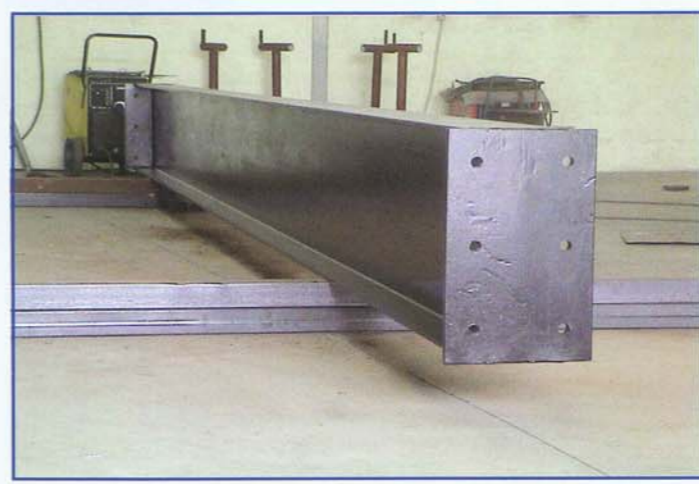
**AL WARSAN THIRD**



**EMAL**



**MADINAT AL ARAB DH-1**



## Structural Works



**ADCO Project - Gates**



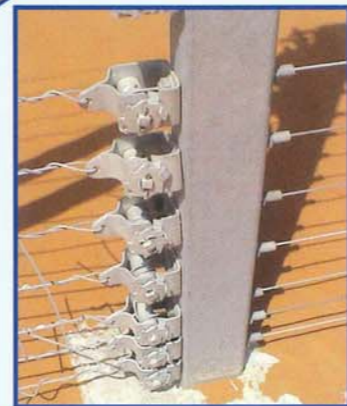
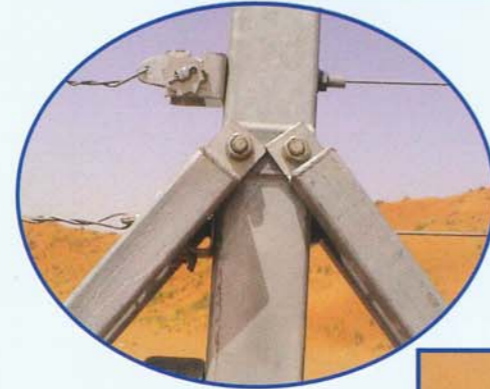
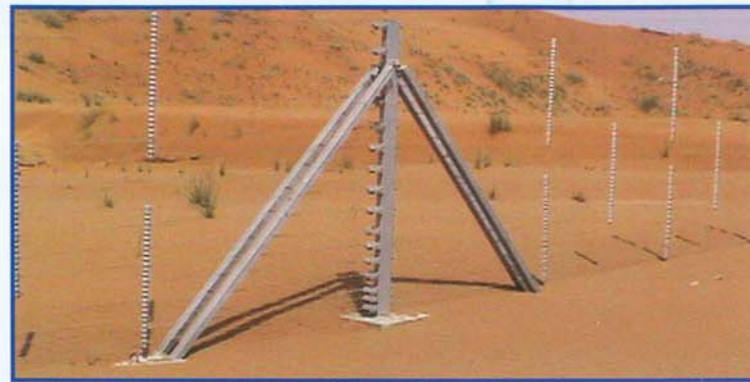
**R.A.K. PWD**



## Sand Fence / Camel fence High Tensile Wire Fence

As per BS specification BS 1722

- All metal Hot Dip Galvanized. BS EN ISO 1461.
- **Height** : 2.14 Mtr. & Nos. of Line Wire - 16 Rows  
1.9 Mtr. Nos. of Line Wire 11 Rows.
- **Line Wire Diameter** : 3.05 and/or 3.15 mm Diameter.
- **Posts** : - Box section - 100 x 50 RHS & 50x50 SHS



### Animal Grid

These Grids are used to prevent Animals crossing. We provide design, Drawing, specification.

- All metals Hot Dip Galvanized BS EN ISO 1461.
- Fabrication
- R.C.C. Foundation & Fixing



### Short Blade Barbed Tape [SBBT]



### Medium Blade Barbed Tape [MBBT]



### Long Blade Barbed Tape [LBBT]



### Concertina Barbed Razor Tape

Razor Tape normally used in Borders, Defence Areas and Airports areas.

#### Coil Diameter :

450 / 600 / 700 & 980 mm. As per Standards specification.

## APPLICATIONS

Fencing is usually required where intrusion is to be deterred. Gravity Steel products is to meet these basic requirements. The following areas where fencing can be used.



- Borders fence
- High ways
- Defence
- Oil field
- Esalination Plants & Pumping stations
- Railway station & Railway crossings
- Tennis courts
- Sports Grounds
- Industrial Areas
- Animals Zoo & Wild life parks
- Agricultural farms
- Air ports
- Power Sub-stations
- Private Housing And many more



### Gravity Steel is also dealing with following products.

- Wrought Iron Art-fence
- Aluminium Grills, gates, Bollards, Garden furniture's, Stair Balusters, All Type. Railing
- Wall cladding, architectural screens or infill panels for buildings such as multi-storey car parks, housing for mechanical plant of ground or roof level, refuse bin enclosures, ventilation grilles, brise soleil
- Welded mesh fencing system.
- Grating fencing
- Guard railing
- Concertina - C.B.T. & C.B.W.

