

Seatrail



CERTIFICATE #: D009/2003

*All types of Specialty trailers upto 50tons, Military Products,
Military/Specialty Shelters, Armored/Customized Vehicles, Garbage Equipment,
Airport Dollies, Mobile Kitchen, Container Homes*

Seatrail سی ٹریل

P.O. Box: 11406, DUBAI, U.A.E.

Tel No.: 00971-4-8803222 Fax No.: 00971-4-8803366

EMAIL: seatrail@eim.ae



AIRPORT

AIRPORT

AIRPORT

10FT LD7 PALLET DOLLY

Airport Ground Support Equipment



10ft LD7 Pallet Dolly

Load Bed:

The conveying surface consists of three rows of 65.5mm diameter. Heavy-duty sealed bearing rollers; running on heavy hexagonal, spring loaded axels.

Walkway:

The two of three roller rows are separated by an anti slip walkway.

Running Gear:

Two twin wheel swivel casters fitted with heavy duty taper roller bearings and five stud hubs with an anti-shimmy device, are fitted at the front and two twin wheel fixed casters at the rear. The wheels are two-piece pressed steel fitted with 400-8, 3-D Super Elastic, three stage solid rubber tires.

Specification:

Weight:	1,470 kgs
Overall length (lowbar don)	4,750 mm
Overall length (lowbar up)	3,911 mm
Bed length	3,020 mm
Bed width	3,410 mm
Bed height	520.7 mm
Carrying capacity (24km/h)	7,000 kgs

Lift up Stops:

Heavy-duty lifts up stops are fitted in correct position according to pallet sizes.

Airport Ground Support Equipment



LD3 Pallet Dolly

Load Bed:

The conveying surface consists of one constant and one bed. Both beds contain two rows of 65.5 mm diameter Heavy-duty sealed bearing rollers, running on heavy hexagonal, spring loaded axels.

Walkway.

There is one walkway in the middle of the beds, which is an anti-slip diamond shape special grating. Walkway width is 237 mm.

Handles

There are three types of handles on the both sides of the dolly as follows :

- 1) Handles on the front brakes.
- 2) Handles to hold the container
- 3) Handles to control the rotation position

Specification:

Weight:	825 kgs
Overall Length (towbar down)	3,275 mm
Overall Width	1,762 mm
Bed Length	2,850 mm
Bed Width	1,587 mm
Bed Height	512 mm
Carrying Capacity (20km/h)	1,590 kgs

Brakes:

Highly effective on front two wheels by raising the handle.

LD3 CONTAINER DOLLY

LD3 CONTAINER DOLLY



Seatrail سیتریل

P.O.Box: 11406, Dubai, UAE

Tel No: 00971-4-8803222, Fax No: 00971-4-8803366

Email: seatrail@eim.ae

20FT. PALLET DOLLY

20FT. PALLET DOLLY



Seatrail سیتریل

P.O.Box: 11406, Dubai, UAE

Tel No: 00971-4-8803222, Fax No: 00971-4-8803366

Email: seatrail@eim.ae

40FT. PALLET DOLLY

40FT. PALLET DOLLY



Seatrail سیتریل

P.O.Box- 11406, Dubai, UAE

Tel No: 00971-4-8803222, Fax No: 00971-4-8803366

Email: seatrail@eim.ae

CARGO CART

CARGO CART



Seatrail سیتریل

P.O.Box: 11406, Dubai, UAE

Tel No: 00971-4-8803222, Fax No: 00971-4-8803366

Email: seatrail@eim.ae

BAGGAGE CART

BAGGAGE CART



Seatrail سیتریل

P.O.Box: 11406, Dubai, UAE

Tel No: 00971-4-8803222, Fax No: 00971-4-8803366

Email: seatrail@eim.ae

TOWABLE ACCESS STAIRS FOR GPU

TOWABLE ACCESS STAIRS FOR GPU



Seatrail سیتریل

P.O.Box- 11406, Dubai, UAE

Tel No: 00971-4-8803222, Fax No: 00971-4-8803366

Email: seatrail@eim.ae



Refrigerated 10ft LD7 Dolly

All specification are similar to our 10ft LD7 Dolly, other specifications include 80mm thick refrigerated body consisting of fiber glass skin both in and out with 40kg/m3 PU Foam sandwich panels, 2500 BTU capacity Thermo King AC unit with 5kw generator with necessary fuel tank, 2 electrically operated insulated doors with vision panels. Rollers or balls option for the bed, standard locks, break, tires, tow bar etc. Totally designed to required specifications.

Specification:

Overall Length	5,800 mm
Overall Length (Tower)	4,300 mm
Bed Length	3,552 mm
Bed Width	4,450 mm
Bed Height	510 mm
Carrying Capacity(24 km/h)	7,000 mm
Overall Height	4,375 mm

Airport Ground Support Equipment



Luggage Conveyor System

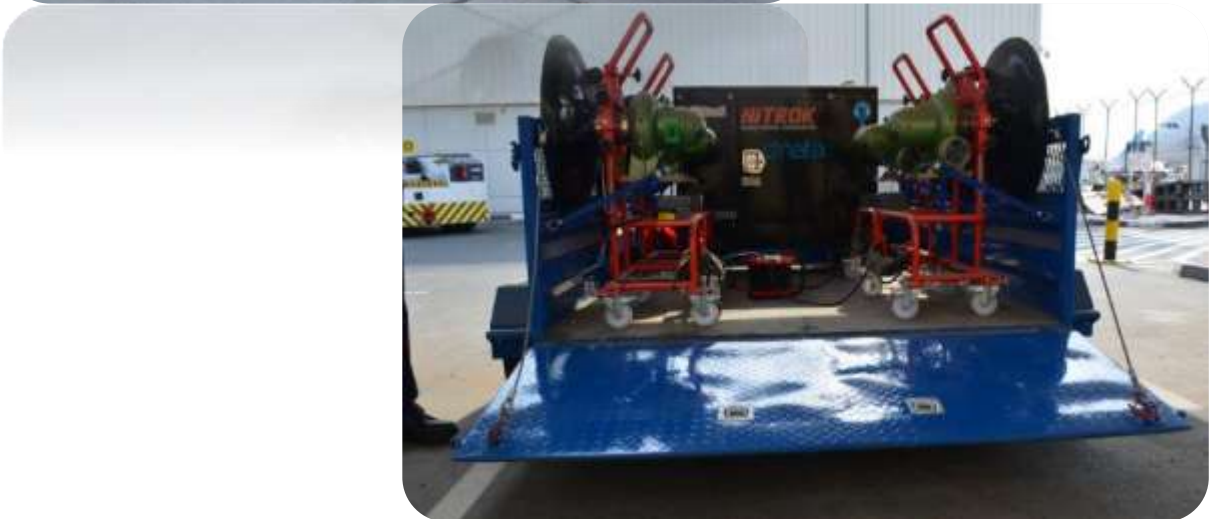
Luggage Conveyor System to load and unload cargo, in mobile and vertically-adjustable design. The sectional belt conveyors have universal utilization in a lot of field of industry. The produced series are applicable from light to the most heavy work conditions. They are offered in modification and "customised" form as conveyor systems. For draft the appropriate handling system we need:

- what do you like to transport
- length of transport
- height of transport
- environment

Our company will design the manipulation system and supply it in a short time. The warranty and regular service we are providing directly from manufacturing site.

AIRCRAFT WHEEL COOLING TRAILER

AIRCRAFT WHEEL COOLING TRAILER



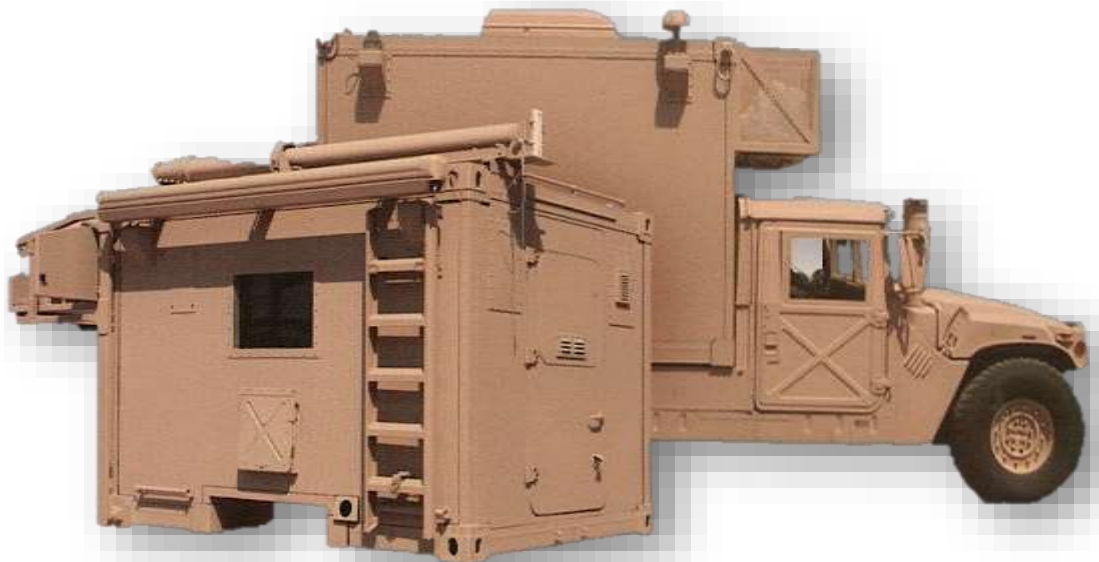
Seatrail سیتریل

P.O.Box: 11406, Dubai, UAE

Tel No: 00971-4-8803222, Fax No: 00971-4-8803366

Email: seatrail@eim.ae

MILITARY/ VEHICLE



MILITARY SHELTER

COMMAND POST SHELTER



The Military Shelter is employed in a variety of military exercises to demonstrate effective employment of electronic combat concepts and systems. The vehicle is filled with computers and communications capability adapted to electronic combat. Some of the capabilities proved to be highly effective as stand-alone systems in Desert Storm. The Command Post demonstrates the utility and operational concepts for employing such systems in concert as an integral part of command and control systems.

As equipment in the commercial sector is improved and upgraded, the equipment in our command and control systems can be upgraded without major impact. We sustain an evolutionary technology refresh process that keeps our systems populated with state-of-the-art capabilities.



American Military Standards - Fully Shielded to 60 dB against Electro Magnetic Interference (from nuclear bombs) and Radio Frequency leaks.

Fitted with: A/C, Generator, Fridge, Electric DB, lights, Heavy Equipment Mounts, Coffee maker, torch, ladder, roof tie downs, white board, fire extinguisher, Special Chairs, foldable racks, spare tire, special mounts, antennas, lashing eyes etc.



Seatrail سیتریل

P.O.Box: 11406, Dubai, UAE

Tel No: 00971-4-8803222, Fax No: 00971-4-8803366

Email: seatrail@eim.ae





EXPANDABLE SHELTER

MILITARY SHELTER



Seatrail سیتریل

P.O.Box: 11406, Dubai, UAE

Tel No: 00971-4-8803222, Fax No: 00971-4-8803366

Email: seatrail@eim.ae

MILITARY SHELTER



MOBILE INCIDENT COMMAND CENTER



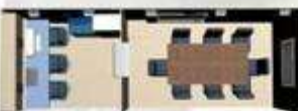
INCIDENT COMMAND SYSTEM

The use of mobile command technology allows people to remotely explore and work in dangerous environments without risk of injury or death. It is therefore understandable that the JETS Team and Safety offices have been very supportive of the development of a tool enabling them to remotely explore areas where hazardous materials are involved. The incident mobile can provide vital information on spill location, magnitude, material type and concentration so a well prepared response team can safely enter the site.

DRIVING SYSTEM

The main driver in the system redesign is to enable robot operation in potentially combustible atmospheres. This required rebuilding this kind of vehicle from the track drive up to enclose all electrical components in areas which can be positively pressurized. As added protection all solid state electronics and brushless DC

motors are used which under normal operations do not electrically are providing a source of ignition. This capability is extremely important in JETS response since combustible materials are frequently encountered and a prior knowledge as to the presence or absence of combustibles may not be available to the incident commander. Other modifications included the addition of a sophisticated on-board computer system to of specialized tools for unlocking and opening doors, and enhancement of the operator interface.







MOBILE IMMIGRATION



Seatrail سیتریل

P.O. Box: 11406, Dubai, UAE

Tel No: 00971-4-8503222, Fax No: 00971-4-8503366

Email: seatrail@eim.ae

MOBILE IMMIGRATION



Seatrail سی ٹریل

P.O. Box: 11406, Dubai, UAE

Tel No. 00971-4-8505222, Fax No. 00971-4-8503366

Email: seatrail@eim.ae



MOBILE WORKSHOP



Seatrail سی‌تریل

P.O. Box: 11400, Dubai, UAE

Tel No. 00971-4-5503222, Fax No. 00971-4-5503366

Email: seatrail@seilm.ae

MOBILE WORKSHOP

MOBILE WORKSHOP VEHICLE



Seatrail سیتریل

P.O. Box: 11406, Dubai, UAE

Tel No: 00971-4-5503222, Fax No: 00971-4-5503366

Email: seatrail@eim.ae

FULLY EQUIPPED WITH A COMPREHENSIVE SELECTION OF SPECIALIST TOOLS



JETS is using high-quality aluminium foam panels, the shelters are exceptionally well-suited for use in extreme temperature conditions and for many years have already proved successful for various types of Mobile Workshop shelter structures throughout the world.



The roof structure is suitable for walking on and is non-slip. An all-round roof guard rail is used to hold various additional equipment.

An entrance door with retractable ladder at the rear provides convenient access to the working area, which with its built-in air conditioning provides a comfortable inside working area.



"Super silent pack" generators on separate extensions in the plant room provide all the equipment with the power required for problem-free operation.



SURVEILLANCE VEHICLE

MOBILE SURVEILLANCE VAN



Seatrail سیتریل

P.O.Box: 11406, Dubai, UAE

Tel No: 00971-4-8803222, Fax No: 00971-4-8803366

Email: seatrail@eim.ae

RAPID INTERVENTION VEHICLE

INTERIOR SETUP:

- Insulation - Aluminum-hide PolyesterFoam for sound absorption and heat insulation
- Seats - 12 Single tip up with inertia-reel seatbelt
- Lights - 6 Fluorescent Interior Lamp
- Flooring - moulded rubber round anti slip floor tiles
- Toilet - Thetford C200W manual flush cassette toilet unit

EXTERIOR:

- Air Conditioner - 2 electric (24V) air intake ventilators
- Ventilation - 2 vents are provided on the top
- Water Tank - fresh water tank and waste water tank provided underneath the van
- Roof Beacons - blue roof beacon will be installed with switch
- Bull Bar - protection for front headlights and mounting kit.

ELECTRICAL:

- Generator - Mase Voyager 5000DM 5.5KW 240V with Yanmar L100 air cooled diesel engine.
- Lighting - 1200mm long light bar, with 4 red and 4 blue rotating mirrors. P100 central loud speaker, roof mounting kit.
- Siren - 5 tone siren and PA controls and blue roof beacon with switch
- Voltage Converter - connected to 24V vehicle batteries to supply for generator starting, wash basin, water pump etc.



RIV will maintained using hours of operation rather than distance covered



Our mission:

To build a Rapid Intervention Vehicle, powered from sustainable energy and have the facilities same as any office. These facilities will be available for campaigners involved with Non-Violent Direct Action campaigns and other environmental projects.

Where will it go?

We will endeavor to move the Rapid Intervention Vehicle to wherever it is most needed at the time. Meetings need to be located either on or very near to a site in order for site dwellers to be able to use the equipment.





EXPLOSIVE ORDNANCE DISPOSAL



FUNCTIONS

The Explosive Ordnance Disposal used to respond calls where there is a possibility of explosives being located. The primary responsibility of the unit is identification of explosive devices and scene containment. The unit can handle cases involving commercial and military explosives, as well as improvised (home made) devices.



JETS has been customizing disposal vehicle for all types of explosives disposals. It is a very specialised task.

Improvised Explosive Device Disposal

An improvised explosive device is any object suspected of containing explosive material. Improvised Explosive Ordnance Disposal (EOD) Vehicle is to neutralise suspected objects with specialised equipment. The JETS is a remote handling device for bomb disposals.

The basis track driven has a rotatable turret that a variety of bomb disposal accessories and attachments can be fitted.

Explosive Ordnance Disposal

Explosive Ordnance Disposal (EOD) is performed using a dedicated commercial four wheel drive vehicle, plastic explosives, perhaps an A Booster, some detonating cords and a detonator.

Stray and Deteriorated Commercial Explosives

Stray or deteriorated commercial explosives can be in many forms – from commercial dynamite, powergel, and detonators to road flares in imported cars.

JETS providers of primary disposal services for stray and deteriorated commercial explosives on an as-needs basis.



BULL BAR ON SUV



Seatrail سیتریل

P.O.Box: 11406, Dubai, UAE

Tel No: 00971-4-8803222, Fax No: 00971-4-8803366

Email: seatrail@eim.ae



CATERING VEHICLE FOR VIP



Seatrail سیتریل

P.O.Box: 11406, Dubai, UAE

Tel No: 00971-4-8803222, Fax No: 00971-4-8803366

Email: seatrail@eim.ae

MOBILE OFFICE

The Mobile Office is a contemporary private meeting place that goes wherever you go. Travel in comfort and style in this luxurious office on wheels!



This Mobile Office is shown with an optional raised roof, providing extra headroom and spacious overhead storage compartments.

Take your office on the road! Keep your work materials at your fingertips and stay well organized. Save commuting time and travel in style. Invite your customers to step into your private office to free them from lengthy commutes and office distractions.

They will appreciate the luxurious comfort of leather seating, plush carpeting and ample lighting. Anyone who takes their business on the road can maximize a busy schedule with the JETS Mobile Office.



Floor mount swivel chair, double drawer storage and optional wall organizer will maximize your work-space.



Seatrail سیتریل

P.O.Box: 11406, Dubai, UAE

Tel No: 00971-4-8803222, Fax No: 00971-4-8803366

Email: seatrail@eim.ae

ARMORED VEHICLE

OUR ARMORED VEHICLES ARE BUILT WITH SERVICEABILITY
AND LONGEVITY IN MIND - QUALITY IS BUILT IN

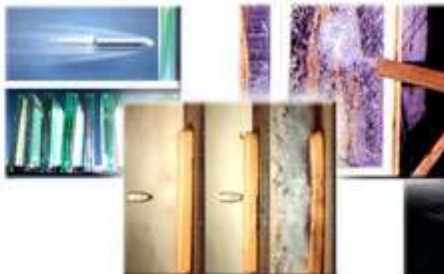
JETS is a privately owned UAE National Company with years of experience in armoring. We supply the needs of wide range of local clients with vehicle ranging from cash transit vans, light military vehicles etc.

The armoring job is carried out at our facility in Dubai with the help of well known armoring companies like Armor Systems and Projects (PTY) Ltd. South Africa and AP Secure GMBH, Germany.



ARMORING MATERIAL

We use either armoring steel, Kevlar Synthetic fiber from Dupont or high strength, light weight composite armoring material, depending upon the customers choice. Armor Steel of Different thickness is cut and formed whereas composite armoring material's molded.



RUN-FLAT TIRE



Drivers are still at greater risk drivers when stranded at roadside. That's reason enough for them to delight in the swelling interest in run-flat tires. Not that these tires actually run flat; more correctly they simply do not go flat even though they are as empty of air as the moon.

Airless, the tire supports itself - and the car - on stiffened panels in the sidewalls. With no noticeable alternation in performance, the airless tire can be run at speeds up to 55 mph for 50 to 150 miles depending on the vehicle. Plenty of leeway to get to the safety of a friendly repair shop.

Tires don't typically carry the weight of our vehicles, the air inside them does. There are three basic elements which determine the load capacity of a tire, the size of the air chamber formed between the tire and wheel...the strength provided by the tire's construction to hold air pressure...and the amount of air pressure actually in the tire.

Most flat tires (and tire "blowouts") are the result of slow leaks which go unnoticed and allow the tire's air pressure to escape over time. If we had a way to conveniently monitor our tires air pressure, we'd be half way there. If we had tires which could maintain vehicle mobility even after air loss, we'd be just about invincible.

Today there are three technologies being developed to help maintain vehicle mobility as a tire is punctured and after. Of the three, self-sealing and self-supporting tires are available today, while auxiliary supported systems are on the drawing boards for use as Original Equipment in the future.

Seatrail سیتریل

P.O.Box: 11406, Dubai, UAE

Tel No: 00971-4-8803222, Fax No: 00971-4-8803366

Email: seatrail@eim.ae

BUILDING SHELTERS

QUICK STORAGE SPACE



When more production space or storage space is needed very quickly, such as in cases of unexpected large orders, while remodeling work is being carried out, or during temporary shortages of storage space, then we have the suitable building on stock as a rule in our extensive rental inventory.



Transfer rental buildings are available at short notice in various dimensions with widths spanning up to 20 m and up to 6 m high, and thanks to our patented folding system, they're all quick to set up.



Many of our customers think highly of rental variation and not only as a short-term immediate aid, but rather also use this offer for medium-term planning to, for example, remain independent in the long term when changing locations frequently.

When rented out internationally, an deposit must be paid, which is agreed individually.



500 m² are assembled in 24 hours!

A quick and economical answer to your space problem

High-quality precision work at a mass-production price, satisfied building owner are still the best advertising.



Fast and reliable wherever you want



Always a suitable solution From a temporary solution to permanent use

COMMUNICATION SHELTER

THE EXPANDABLE COMMUNICATION SHELTER CONCEPT IS DESIGNED FOCUSING ON RAPID DEPLOYMENT



Automatic Mobile SatelliteGround Station (AMSGS). AMSGS is designed for temporary installation of complete communication network node connected via satellite to public or private networks. Quickly installed, easily operated and working completely independent from any local infrastructure, AMSGS provides full-scale networking services including GSM, DECT, voice, fax, video and data communication for distances up to 20 km around the system.

COMMUNICATION WITHOUT BORDERS - AMSGS



AMSGS can be equipped with a GSM base transmitter station (BTS). Using standard GSM phones, user can take advantage of mobile communication in a wide area around the system. BTS is connected via satellite to the network of the GSM operator and other networks worldwide.

AMSGS serves complete communication needs. Equipped with PABX, router and customer data communication equipment, it provides complete range of voice, data (incl. Internet access) and video services.

Satellite communication shelter



CORPORATE NETWORK NODE



GSM OUT OF THE BOX

OFFICE CONTAINERS GIVE YOUR COMPANY THE OPPORTUNITY TO GROW IN REMOTE AREAS



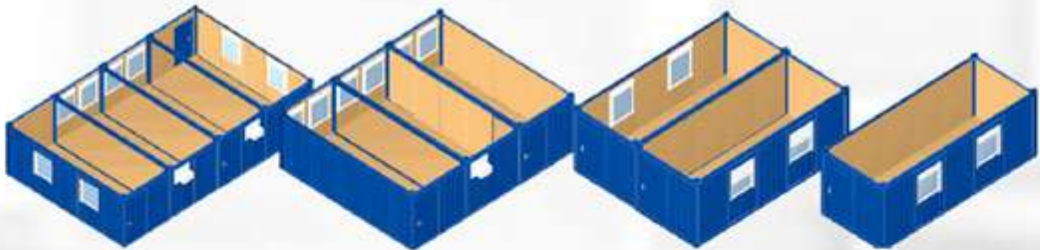
OFFICE AND CREW CABINS 20'



SANITARY CABINS

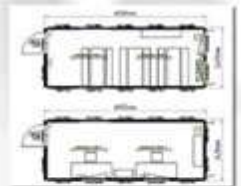
20' and 40' containers are usable universally as transport- or storage-containers as well as last trip-containers for export. Through purchasing the containers in large quantities from the Middle East, Far East and Asia we are able to offer our clients price advantages

Advantages:
Quality lacquer
Depots throughout the whole of Europe
Prompt availability
Of course, all containers come CSC-plated



All above mentioned containers types are equipped with exterior hinged double doors at one end which open completely. Steel: Walls made from beaded steel sheets, steel profile frame, wooden floor on steel cross members. The 40' ISO norm container is also equipped with 2 forklift pockets on each long side. CSC-plated for MGW (Max. Gross Weight) of 30 to, corten steel sheet (anti-corrosive), 28 mm plywood floor, Germanischer Lloyd certificated

Dimensions
Inside
Length
12030 mm Width
2350 mm Height
2390 mm
Outside
Length
12190 mm Width
2430 mm Height
2590 mm
Weight
4100 kg





Active air conditioning is a standard configuration for telecommunications shelters and it is the most efficient solution when the heat to be dissipated is high and when commercial mains power is normally available.

ISO shelters are compatible with military and commercial handling equipment and can be transported by all modes of transportation including cargo container ships, trucks, trailers and the ISO Dolly Set. These shelters are comprised of individual replaceable panels that are either bolted or hinged into place. These panels are fabricated by hot bonding aluminum skins to resin impregnated paper honeycomb core material. Each ISO shelter is wired for three phase electrical distribution and is integrated with internal fluorescent lights, electrical outlets, an external area light, and an interface for external environmental control units.



The control of the internal temperature is achieved by using different solutions which are selected according to the Local environmental conditions, the internal thermal load and the equipment temperature constraints.



Most of the shelters for telecommunications systems use, as a standard solution, internal or external packaged air conditioning units which integrate the functions of air conditioning units with those of ventilation units, thus resulting in substantial reduction of internal space occupation, less maintenance and improved overall reliability.

Of course, other types of air-conditioning units can be selected and supplied according to customer specifications or to other operational constraints.



TRAILER

TRAILER



MILITARY TANKER TRAILER



Designated to carry a load of 300 Gallons of water under a single compartment, used for rough roads, mild steel rectangular hollow section with Heavy Duty Axles & Tires. Additional Accessories such as too box, pump, handles, etc., fixed on this trailer for safety & precautionary measures.



BIG 1-TON CAPACITY TRAILER



The trailer is off heavy duty type, capable of transporting two tons net fixed with one 6000 pounds heavy duty axle and 235/85 R16 tires. High quality Tarpaulin is fitted on the top of the trailer with an eyelets lacing at the border, fixed using a SH 40 M S pipe which is detachable.



SMALL 1-TON CAPACITY TRAILER



The trailer designated to carry a capacity of 1 ton net, with an heavy duty axle of 5200 Lbs fitted with 16" radial tires, the chassis is made of rectangular hollow section measuring 100 x 40 x 4mm is fitted on this trailer and the deck bed of 3mm M S Plate.

UTILITY TRAILERS



Seatrail سیتریل

P.O.Box: 11406, Dubai, UAE

Tel No: 00971-4-8803222, Fax No: 00971-4-8803366

Email: seatrail@eim.ae

EQUIPMENT MOUNTED TRAILERS

OIL (%) DISPLAY EQUIPMENT TRAILER



MOBILE DRILL TRAILER



MAST ANTENNA/COMMUNICATION EQUIPMENT TRANSPORTATION TRAILER



GENERATOR MOUNTED TRAILER



SEATRAIL DUMP TRAILER



Length and Width - 8' x 4'

Jack - T J 15

Loading - Manuval aHydraulicPump

Tire - radial,

CABLE REEL TRAILER



Capacity - 3000lbs ,

Tire - radial,

jack - Drop Leg Stadard,

Loading - Independently operated cable Reel Lifiting Cylinders

Hydraulics - Manuval aHydraulicPump



SKID STEER TRAILERS

SKID STEER TRAILERS



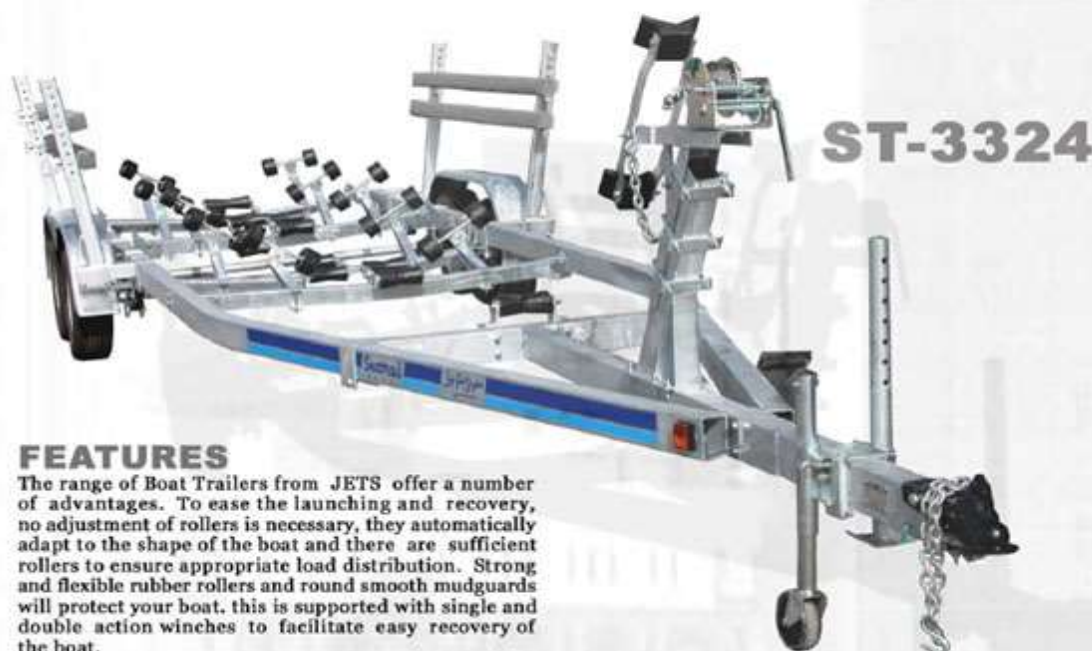
Seatrail سیتی تریل

P.O.Box: 11406, Dubai, UAE

Tel No. 00971-4-8803222, Fax No. 00971-4-8803366

Email: seatrail@eim.ae

BOAT TRAILERS



FEATURES

The range of Boat Trailers from JETS offer a number of advantages. To ease the launching and recovery, no adjustment of rollers is necessary, they automatically adapt to the shape of the boat and there are sufficient rollers to ensure appropriate load distribution. Strong and flexible rubber rollers and round smooth mudguards will protect your boat, this is supported with single and double action winches to facilitate easy recovery of the boat.



QUALITY

Some of more unique feature of JETS boat trailers are the EZ-LUBE Hub System. This system allows easy lubrication of the spindle and wheel bearing and prolong the life of the trailer. Another feature is the Submersible Trailer Light System that allows the launching of the boat without deterioration of the lightning system.



ST-2416



ST-1908



ST-SJ-1



ST-3324



ST-3532



ST-3120

Seatrail سیتریل

P.O.Box: 11406, Dubai, UAE

Tel No: 00971-4-8803222, Fax No: 00971-4-8803366

Email: seatrail@eim.ae

27FT CATAMARAN

27FT CATAMARAN BOAT TRAILER



JETSKI TRAILER STJS-1S



HORSE TRAILERS

Complete home on wheels for horses



Models

STHT series of Trailer have been differentiated accordingly to the number of horses, for which the trailer has to be built for transportation with various options and flexible piece.

- STHT-1 - Single Horse
- STHT-2 - 2 Horses
- STHT-3 - 3 Horses
- STHT-4 - 4 Horses
- STHT-5 - 5 Horses
- STHT-6 - 6 Horses

OTHER POPULAR OPTION WHICH WOULD BE INSTALLED ON CUSTOMER'S CHOICE:

Various Axle options, Chrome Wheels, Rear feed and tack room wall that folds against street side walls, Extra Locations for solid wall, Blanket bars, Clothes rods, Oscillating fans, 12 volts outlets (interior and exterior), Foot locker, Camper steps, Step Cleats, Tool boxes, Cupboards, Bath packages, Sinks, Refrigerators, Exhaust, etc., would be installed according to the customer design and request.

"JETS" is committed to meet your needs when you're out on the roads with your Horses. We have one department totally dedicated towards creation of quality finished Interiors and Exteriors.

Working directly with "JETS" with your design and interior package provides you with total quality control and total satisfaction.



Seatrail is manufacturing the best trailers throughout the years, developing a tradition of caring for Horses while on the move.

Seatrail سیتریل

P.O.Box: 11406, Dubai, UAE

Tel No: 00971-4-8803222, Fax No: 00971-4-8803366

Email: seatrail@eim.ae

WASTE CONTAINERS / BINS

WASTE CONTAINERS

Manufacturers of standardized containers for the collection of solid waste, with its own factory & tools, applying the most advanced technology in the waste industry



WASTE CONTAINER 4.5 CBM
DIN 30738 STANDARD DESIGN
FOR BIN LIFT



WASTE CONTAINER 2.5 CBM
DIN 30738 STANDARD DESIGN
FOR BIN LIFT



WASTE CONTAINER 1.1 CBM
DIN 30700 STANDARD DESIGN
FOR BIN LIFT