

INFOCARE

INTELLIGENT SECURITY SYSTEMS



KOREA
 Sindong-A Bldg, #92, 5 GA
 Nampo-Dong, Joong Gu
 Busan, Korea.
 Email : korea@infocaresystems.com

DUBAI
 Sharjah Airport Freezone
 P O Box :8992
 Sharjah, UAE
 Email : dubai@infocaresystems.com

OMAN
 Post Box : 881
 Postal Code : 117
 MSQ, Sultanate Of Oman
 Email : oman@infocaresystems.com

INDIA
 "Kaveri" Velichikala (P.O)
 Kaitthakuzhy, Kollam
 Kerala, India
 Email : india@infocaresystems.com

FoXtech.co.uk

www.infocaresystems.com

COMPANY PROFILE

Security at workplace and business establishments is one of the concerning issues today. Advance technology and improved products have proven to bring out a drastic change in the safety of offices and homes alike.

At INFOCARE SYSTEMS we are among the leading players in Korea focusing on various Intelligent security products. With locations in Korea, Hongkong, Dubai, Oman and India, company has presence throughout the region through appointed distributors and resellers.

All the process that is involved in manufacturing of products, which undertake from in house to the research and development of products. Our sophisticated design systems and modernized equipments ensure that we are capable of providing innovative, reliable and best quality products.

While our specialty at InfoCare is providing complete Security Systems Solutions provider for large and mid-range projects, with our flexible systems, we also offer advanced solutions for smaller projects with expansion potential. We are the OEM manufactures of Wireless Security Systems and Sensor Lights. InfoCare Systems integrate access control, intruder alarm, CCTV, Bio Metric Systems and third party sub systems. From small single door facilities to multiple sites with thousands of users, InfoCare has the solution.

Together with R&D, logistics and marketing capabilities, and the professional manner in which it operates, InfoCare aims to continue to provide a wide range of quality services for its customers and, the process, grow and prosper with them.

InfoCare Systems, providing total customer satisfaction through professionalism, is truly a trustworthy partner for any company.



Vandal Proof IR Dome Camera

FXI-324F

Image Sensor	1/3 inch Sony CCD
Effective Pixels	PAL : 500(H) X 582 (V); NTSC: 510(H) X 494 (V)
Sync System	Internal
H - Resolution	480/540 TVL
IR Distance	20m
S/N Ratio	More than 48dB (AGC off)
Usable Illumination	0 Lux by CDS
IR LED	24pc
White Balance	ATW
C.Video Output	CVBS 1.0Vp-p / 75Ω
Input Voltage	8-18v DC 300 mA
Current	2W (Max)
Water Resistant	IP 66
Operating Temperature	-20°C - +50°C
Lens	Fixed 3.6mm
White Balance	Auto
IRIS Control	Electronic
Physical	
Color	New Gray/ Sliver
Weight	0.34k0kg
Size	535×340×285mm

FEATURES

2.5' Metal Half Rotate Dome Camera
1/3" SONY Colour CCD & DSP
480/520TVL
25m IR Range (23PCS ϕ 5 IR LEDS)
Standard match 3.6/6mm fixed lens

IR Weatherproof 30M

FXI-3203

Image Sensor	1/3 inch Sony CCD
Effective Pixels	PAL : 500(H) X 582 (V); NTSC: 510(H) X 494 (V)
Sync System	Internal
H - Resolution	480/540 TVL
IR Distance	30m
S/N Ratio	More than 48dB (AGC off)
Usable Illumination	0 Lux by CDS
IR LED	30pc
White Balance	ATW
C.Video Output	CVBS 1.0Vp-p / 75Ω
Input Voltage	8-18v DC 300 mA
Current	2W (Max)
Water Resistant	IP 66
Operating Temperature	-20°C - +50°C
Lens	Fixed 3.6mm
White Balance	Auto
IRIS Control	Electronic
Physical	
Color	New Gray/ Sliver
Weight	0.380kg
Size	79 x 72 x 124mm



FEATURES

Weather proof IR Camera
1/3" SONY Color CCD & DSP
480/520TVL
30m IR Range (30PCS ϕ 5 IR LEDS)
Standard match 3.6/6mm fixed lens

CCTV CAMERA

Weather Proof Long Range IR (50 M) FXI-3882



Image Sensor	1/3 inch Sony CCD
Effective Pixels	PAL : 500(H) X 582 (V); NTSC: 510(H) X 494 (V)
Sync System	Internal
H - Resolution	480/540 TVL
IR Distance	50m
S/N Ratio	More than 48dB (AGC off)
Usable Illumination	0 Lux by CDS
IR LED	36pc
White Balance	ATW
C.Video Output	CVBS 1.0Vp-p / 75Ω
Input Voltage	8-18v DC 300 mA
Current	2W (Max)
Water Resistant	IP 66
Operating Temperature	-20°C - +50°C
Lens	Fixed 3.6mm
White Balance	Auto
IRIS Control	Electronic
Physical	
Color	New Gray/ Sliver
Weight	1.280kg
Size	104 x 96 x 152mm

FEATURES

- 1/3" SONY Colour CCD & DSP
- 480/540TVL
- 36m IR Range (30PCS 8 IR LEDS)
- Standard match 3.6/6mm fixed lens or 4-9 VF lens(optional)

Vandal Proof Clear Dome Camera

FXD-32DS



Image Sensor	1/3 inch Sony CCD
Effective Pixels	PAL : 500(H) X 582 (V); NTSC: 510(H) X 494 (V)
Sync System	Internal
H - Resolution	480/540 TVL
Composite video	1.0Vp-p, 75 Ohms
S/N Ratio	More than 48dB (AGC off)
Usable Illumination	0.8 to 1.0Lux/F2.0
Gamma correction	0.45
White Balance	ATW
C.Video Output	CVBS 1.0Vp-p / 75Ω
Input Voltage	8-18V DC, 120 mA
Current	2W (Max)
Operating Temperature	-20°C - +50°C
Lens	Fixed 3.6mm
White Balance	Auto
IRIS Control	Electronic
Physical	
Color	New Gray/ Sliver
Weight	0.310kg
Size	95 x 95mm

FEATURES

- 2.5-inch Vandal proof dome
- 1/3" SONY Color CCD & DSP
- 480/540TVL
- Standard match 3.6/6mm fixed lens

VANDAL PROOF PAN/TILT CAMERA

Medium Speed Intelligent Dome PTZ FXD-32DZ



Image Sensor	1/3 inch Sony CCD
Effective Pixels	PAL : 500(H) X 582 (V); NTSC: 510(H) X 494 (V)
Sync System	Internal
H - Resolution	540 TVL
Manual Speed	0.5° - 50°/s
Preset Speed	50° /s
Horizontal Rotation	360° endless rotation
Vertical Rotation	0 - 92°
Preset Positions	128
Auto Scanning	2, 1 Auto scanning route and speed can be set
Communication Baud Rate	1200/ 2400/ 4800/ 9600bps
Address Range	1 - 127
Operating Temperature	-20°C - +50°C
Lens	Fixed 3.6mm
White Balance	Auto
IRIS Control	Electronic
Physical	
Remote Control	RS485 twisted cable
Weight	1kg (Bracket and adapter not included)
Size	125 x 125 (L x D)

FEATURES

- 1/3" SONY CCD 480/540TVL
- 355° Pan/Tilt Dome Camera
- 64 Preset Points
- With RS485 Remote Control
- 4-9mm Auto Focus Lens

Medium Speed Intelligent Dome PTZ

FXD-320FZ

Image Sensor	1/3 inch Sony CCD
Effective Pixels	PAL : 500(H) X 582 (V); NTSC: 510(H) X 494 (V)
Sync System	Internal
H - Resolution	540 TVL
Manual Speed	0.5° - 50°/s
Preset Speed	50° /s
Horizontal Rotation	360° endless rotation
Vertical Rotation	0 - 92°
Preset Positions	128
Auto Scanning	2, 1 Auto scanning route and speed can be set
Communication Baud Rate	1200/ 2400/ 4800/ 9600bps
Address Range	1 - 127
Operating Temperature	-20°C - +50°C
Lens	Fixed 3.6mm
White Balance	Auto
IRIS Control	Electronic
Physical	
Remote Control	RS485 twisted cable
Weight	1kg (Bracket and adapter not included)
Size	125 x 125 (L x D)



FEATURES

- 1/3" SONY CCD 480/540TVL
- 355° Pan/Tilt Dome Camera
- 64 Preset Points
- With RS485 Remote Control
- 4-9mm Auto Focus Lens

SPY CAMERA

FXM-320E PIR CAMERA



1/3" Sony CCD, 480 TVL
Standard match 3.7mm pinhole lens
AL Casing, strong and beautiful
Suitable for lift, Corridor,
Spy use etc

FXS-320B PINHOLE CAMERA



1/3" Sony CCD, 480 TVL
Standard match 3.7mm
pinhole lens
AL Casing, strong and beautiful
Suitable for lift, Corridor,
ATM etc

FXS-320C SMOKE DETECTOR CAMERA



1/3" Sony CCD, 480 TVL
Standard match 3.6mm lens
Suitable for hidden installation

FXS-320K UFO CAMERA



1/3" Sony CCD, 480 TVL
Standard match 3.6mm lens
Suitable for hidden
installation

IP CAMERA

FXST200 ONE CHANNEL VIDEO SERVER



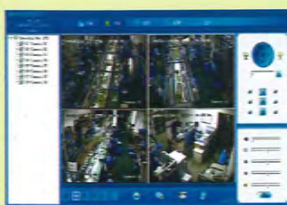
Max Support D1 Image quality
H.264 Compression
Support IE browser/Client
Software
Support Remote browser
administration
Support simultaneous transmission
of audio and video

FXT40EX(36IR)



IR & IP Comoro
SONY CCD 480/520TVI
36pcsof CSmmIRLEOS
30m night vision 6mm/CS Lens
Reduce IR Disturbance
IR Auto-open by CDS control in
Low Lux Support D1 Image
Support Remote Control,
Remote/Local Immediate
Recording, Snapshot
H.264 Compression

NVR



Support IE browser/Client
Software
Support Remote browser
administration
Support simultaneous
transmission of audio and
video

FXB320



IP box camera
Sony/Sharp CCD is optional
480/520 TVL
AGC/BIC is adjustable, alarm
output mount
Max support D1 image
Remote control, remote/
local instant video recording
and screenshot
H.264 compression

HIGH SPEED INTELLIGENT PTZ CAMERA

PRODUCT FEATURES

- ◆ 5 Integrated Camera/Optics Packages
- ◆ Graceful outlook, Vandal proof available
- ◆ Patented connector for fast installation
- ◆ System preheat in low temperature
- ◆ Programmable Multi-protocol
- ◆ 360° continuous pan, 180°Tilt "Auto Flip"
- ◆ 4 tours(27 presets/tour), 4 patterns, 4 cruise
- ◆ 8 Privacy Mask, 8 titled zones
- ◆ Software up-gradable
- ◆ Built-in Alarm, 7 Inputs/2 Outputs
- ◆ Built-in Surge and Lightning Protection
- ◆ Speed Amplify to fit different control keyboard
- ◆ Auto Running Memory Against Power Outage
- ◆ Auto Running Resume after Manual Operation
- ◆ On-Screen display for compass and tilt angle, System and environment temperature, fan status

DOME DRIVE UNIT

- ◆ 360° continuous pan, 180°Tilt "Auto Flip"
- ◆ Discreet Liner with Sealed Fixed Bubble
- ◆ 220 presets, ±0.1° preset accuracy
- ◆ 300°/s Pan/Tilt Preset Speed
- ◆ 6 tours max. 27 presets/tour
- ◆ 6 patterns, 4 cruise, 8 titled zones
- ◆ 8 privacy mask
- ◆ OSD Menu password protection
- ◆ Built-in alarm, 7 input/2 output
- ◆ Multiple RS485 protocol/Coaxial
- ◆ Locations of Labels and On-Screen Displays
- ◆ Software Up-gradable
- ◆ FIFO alarm priority levels
- ◆ Alarm driven Pattern, preset etc.
- ◆ Position Resume After Alarm
- ◆ Variable Cruise Speed 0.1-150°/sec
- ◆ OSD Menu for Programmable Functions
- ◆ Proportional PT Speeds
- ◆ Vertical Tilt Unobstructed 0° to -90°
- ◆ Auto Running Memory Against Power Outage
- ◆ Auto Running Resume after Manual Operation
- ◆ System preheat before camera power on
- ◆ On-Screen display for compass and tilt angle, System and environment temperature, fan status

ACCESSORIES

- ◆ Wall mount bracket
- ◆ Pendant mount accessory
- ◆ Corner mount accessory
- ◆ Pole mount accessory
- ◆ Outside temperature sensor
- ◆ Active or Passive Twisted Pair Connector
- ◆ Manchester Code/RS485 converter



FXD-100 Series

Model	FXD-100RN	FXD-100SN	FXD-100TN	FXD-100QN	FXD-100LN
Image Sensor	1/4" Super HAD	1/4" Super HAD	1/4" Exview HAD	1/4" Super HAD	1/4" Super HAD
Effective pixels	440k(PAL) 380k(NTSC)	440k(PAL) 380k(NTSC)	420k(PAL) 360k(NTSC)	440k(PAL) 380k(NTSC)	440k(PAL) 380k(NTSC)
Resolution	550TVL	550TVL	550TVL	550TVL	550TVL
Lens	22X f=4~88mm	22X f=4~88	23X f=3.6~82.8mm F1.6~F3.7	18X f=4.1~73.8mm F1.4~F3.0	27X f=3.6~98
Digital Zoom	22X12	22X12	23X10	18X12	27X11
Zoom Speed	3.9s~6.3s	3.9s~6.3s	3.9s~6.3s	3.9s~6.3s	3.9s~6.3s
Angle of View	47°~2.2°	47°~2.2°	54°~2.5°	48°~2.7°	47°~3.0°
Sync system	Internal/external				
Min. Illumination	0.9Lux	0.02Lux	0.013Lux	0.7Lux	0.01Lux
S/N Ratio	>50db				
Iris	Auto/Manual				
White Balance	Auto/Manual				
Gain	Auto				
AE Control	Auto/Manual				
BLC	On/Off				
Privacy Mask	No	Yes	Yes	No	Yes
Focusing system	Auto/Manual				
Video Output	1.0±0.2Vp-p				



- FEATURES**
- 4/8/16CH Professional DVR
 - H.264 Compression
 - VGA, TCP/IP, PTZ Controller
 - Pentaplex Operation, CMS
 - Remote Viewing through Internet



- FEATURES**
- 4/8/16CH Professional DVR
 - H.264 Compression
 - VGA, TCP/IP, PTZ Controller
 - Pentaplex Operation, CMS
 - Remote Viewing through Internet

DVR FEATURES M5200 Series

- 4ch, 8ch & 16ch video inputs
- Mainstream profile H.264 guarantees crystal clear picture quality for live, recording and playback
- Superior compression ratio
- Pentaplex feature supports simultaneous operation of Live Monitoring, Recording, Playback, Networking & Archiving
- Records and plays with high-definition video
- Installation up to 3 HDDs
- Audio recording & playback (4/8/16 inputs)
- Archiving to USB Memory Stick, DVD-RW & External USB HDD
- User-friendly DVR GUI menu supports XGA resolution
- GMT Time Zone & NTP (Network Time Protocol) with DST (Daylight Saving Time) auto-adjustable, and system runs as NTP Server
- Control Device - USB Mouse, IR Remote Controller, Front Buttons, Virtual Keyboard & dedicated wired keyboard
- Up to 999 DVRs controlled by a IR remote controller and up to 255 DVRs controlled by a wired keyboard
- Network - DHCP, Static IP, DDNS, Bandwidth control & multi-user, Web Viewer & Mobile Viewer
- Dual streaming - two CODEC engines for DVR and network with different frames and video quality
- Manufacturer's own DDNS Server provides easy to use DDNS service
- E-mail notification with JPEG or Video Clip attachment
- Setup configuration can be loaded / saved via USB Memory Stick
- Link function allows link recording among the camera selected, alarm output, popup window, beep & e-mail notification simultaneously
- 19 inch standard rack mountable
- Special features : POS, ATM (-> Optional)

DVR FEATURES HDSM5100 Series

- 4ch, 8ch & 16ch video inputs
- Mainstream profile H.264 guarantees crystal clear picture quality for live, recording and playback
- Superior compression ratio
- Pentaplex feature supports simultaneous operation of Live Monitoring, Recording, Playback, Networking & Archiving
- Records and plays with high-definition video
- Installation up to 2 x HDDs
- Audio recording & playback (4/8/16 inputs)
- Archiving to USB Memory Stick, DVD-RW & External USB HDD
- User-friendly DVR GUI menu supports XGA resolution
- GMT Time Zone & NTP (Network Time Protocol) with DST (Daylight Saving Time) auto-adjustable, and system runs as NTP Server
- Control Device - USB Mouse, IR Remote Controller, Front Buttons, Virtual Keyboard & dedicated wired keyboard
- Up to 999 DVRs controlled by a IR remote controller and up to 255 DVRs controlled by a wired keyboard
- Network - DHCP, Static IP, DDNS, Bandwidth control & multi-user, Web Viewer & Mobile Viewer
- Dual streaming - two CODEC engines for DVR and network with different frames and video quality
- Manufacturer's own DDNS Server provides easy to use DDNS service
- E-mail notification with JPEG or Video Clip attachment
- Setup configuration can be loaded / saved via USB Memory Stick
- Link function allows link recording among the camera selected, alarm output, popup window, beep & e-mail notification simultaneously
- Special features : POS, ATM (-> Optional)



- FEATURES**
- 4/8/16CH Economic DVR
 - H.264 Compression
 - VGA, TCP/IP, PTZ Controller
 - Triplex Operation
 - Remote Viewing through Internet

FX-H264 SERIES

- H.264 Algorithm hardware compression
- 4 channel DVR 120(100)fps recording capability
- 8 channel DVR 240(200)fps recording capability
- 16 channel DVR 480(400)fps recording capability
- Two-Way audio available
- Pentaplex operation (Playback / Recording / Ethernet / Backup / Live)
- Multi Language OSD
- IR Remote Controller
- VGA output (for LCD Monitor)
- Jog-shuttle for convenience search
- USB(Device) port for firmware upgrade
- USB2.0(Host)/CD-RW/DVD-RW for back up
- Remote viewer via network
- Supports DDNS (Dynamic Domain Name Server)
- Supports Central monitoring system (CMS)
- Operate by front panel and mouse

FX-VH120 SERIES

- 4 channels real-time live display and 4 channels simultaneous playback.
- Virtual H.264 - Unbeatable recording picture quality and compression ratio.
- TRIPLEX - Simultaneous Recording, Playback, and Networking
- NoFS (File System developed) - Designed & developed for preventing loss from recording data by any power failure.
- Multiplexing operation
- Reliability - Real Time Operating System and simplified hardware as well as watchdog timer ensure the reliability.
- Individual channel recording and playback with different frame rate.
- High-quality live and playback resolution.
- Multi-site management - Supported by CMS application.
- Network features - Remote Live, Playback, and Backup.
- Network via LAN, DHCP, DDNS, ADSL (Dynamic and Static IP address).
- User-friendly setup menu with graphic user interface.
- Motion detection - Grid 14x12 motion zone per camera is provided.
- USB ports for JPEG, H.264 data backup and software upgrade using USB flash memory stick.
- Still image capture and review as JPEG format.
- Easy operating with the buttons on the front and the remote controller.
- User verification by password certification.
- Video loss detection.
- Backup - Still-images or AVI data into USB flash memory stick and Network.
- Multi-Languages - User can easily select language from Setup menu.



- FEATURES**
- 4/8/16CH Professional Realtime DVR
 - H.264 Compression
 - VGA, TCP/IP, PTZ Controller
 - Pentaplex Operation
 - Remote Viewing through Internet

CA62 - control panel



5 fully programmable zones + 1 keypad zone, expandable up to 12 zones using doubling zone connection, 3+1 PGM outputs, alarm memory, built-in communicator, Up/down load facility, metal/plastic box

LED62 - LED remote keypad



LED remote CA62 keypad; indication for 12 zones and 2 partitions

PR62 - proximity reader



Proximity CA62 reader using proximity cards or tags

LCD62 - LCD keypad



LCD remote CA60plus keypad with animation, 1 programmable zone

TITAN DL, Digital PIR Detector



Digital processing algorithm; PET immunity - up to 20kg; White Light Immunity - 4000 Lux; bi-directional temperature compensation

SR300 B - outdoor piezo siren



Outdoor piezo siren c two levels of sound 85dB/105dB/1m, blue flash indication, inner metal housing for higher protection, built-in battery.

LCD63 VG keypad



LCD63 VG is a comfortable keypad with VOICE GUIDE and blue animated icon LCD display. This keypad is a part of the CA60plus alarm system

GBD20, digital glass break detector



Glass break detector - digital frequency analysis, detecting 4 types of glass, pattern recognition technology, automatic sensitivity adjustment, false alarm immunity.

SR300 0 - outdoor piezo siren



Outdoor piezo siren, low and high sound levels, orange flash indication, inner metal housing for higher protection

LED63 VG keypad



LED63 VG is a comfortable keypad with VOICE GUIDE and LED display. This keypad is a part of the CA60plus alarm system

6 zones
Up to 12 zones
Expandable up to 64 zones
Detectors
Sirens
Accessories
Software

MAG4: 4 zones fire panel



Conventional fire alarm control panel, 4 fully monitored fire zones with up to 20 automatic detectors, 2 monitored siren outputs, 1 "fire" and 1 "fault" relay output, one man test, metal box

MAG2P: 2 zones fire panel



Conventional fire alarm control panel, 2 fully monitored fire zones with up to 20 automatic detectors, 2 monitored siren outputs, 1 "fire" and 1 "fault" relay output, walk test.

IRIS addressable fire control panel



IRIS is addressable fire detection and indication control panel designed to meet all the requirements of EN54.

- IRIS Features:
- Modular type panel with 1 to 4 loops
 - Certified EN54-2/4
 - Certified System Sensor's compatible products by LPSB and VdS
 - 198 devices per loop (99 detectors/ 99 modules). Opportunity for save of 40 symbols/name per device
 - For each panel - maximum 792 devices
 - 96 zones with programming opportunity for each zone output delays.
 - Day/Night operating
 - Up to 128 programmable inputs/outputs - free programmable. 8 inputs strings as OR/AND function to 1 output.
 - Graphic colored LCD display (320/240). List and view 3 messages/fire/fault) at the same time.
 - Touch screen panel
 - Operating in a network of 32 panels and/or repeater panels as Ethernet connected devices
 - Ethernet interface for programming and monitoring

SF 105 - indoor fire siren



Indoor piezo siren, plastic box, 105 dB/1m, with red flash

SensoMAG MCP50



Manual call point for surface mounting

IRIS Loop



Loop expander-System Sensor series 200 and 500 compatible protocol; max consumption - 700 mA; up to 99 detectors and 99 modules per loop

SensoMAG S30



Optical-Smoke Detector

SensoMAG F10



Fixed Temperature Detector (60°C)

22051E and 22051EI



Photoelectric smoke detector. Available on stock

Conventional Fire Panels
Conventional Fire Detectors
Conventional Sirens
Conventional Accessories
Addressable Fire Panels
Addressable Fire Detectors
Addressable Devices

52051E 52051RE 52051HTE



Temperature detectors. Available on stock

FX-870 is developed to manage entrance security, work place time and attendance, over-work time verification and other situation requiring the presence of the authorized personnel. This innovative RFID product provides unique master/slave function to control other FX-870 and can also works standalone without using PC. That's why our product can answer all your requirements

Features

- Master / Slave Function.
- Double Badge Control.
- Dual Door Interlocking.
- 4 DIO for System Integration.
- Audible Indicators, Big Size LCD.
- On-line Viewing Door Status via Web Browser.
- Multi-door Control Up to 8 Doors (16 External Readers).
- 2 relay output, one for door lock, the other for ringing bell.
- Elevator Control Up to 9 Lifts, 128 Floors / Lift (Need FX-333).
- Selectable Time Zone for Card + Pin / Lock Release / Exit Button).
- Built in http Server, Can Use Web Browser to Make System Management.
- Anti Pass Back (No Tolerance / Period Timer), Offline with Un-limited Level, No Need Online Software Support.
- Support 100 Holiday, 40 Sets Function Key Setting, 128 Departments, 128 Designations, 255 Time Sets, 255 Time Zones, 200 Groups.

Specifications

- Verification Time: Less Than 2.0 sec.
- Registration Time: Less Than 3.0 sec.
- False Rejection Rate (FRR): Less Than 0.01%.
- False Acceptance Rate (FAR): Less Than 0.001%.
- Verification Method: Fingerprint, Fingerprint + Password, Fingerprint + RFID, Fingerprint + Password + RFID.
- Capacity: 4,795 Persons (9,590 Templates), 2 Templates for 1 User.
- Communication Speed: 10/100M, Auto Crossing.
- Communication: RS-485 > External Reader & Relay Box (FX-20), RS-232 > Dial-up Modem or Mini Printer, TCP/IP > PC.
- Verification Mode: 1:1 / 1:N
- Keypad: 10 Number Key + 6 Function Key.
- RFID Function: 125KHz(EM/TM), 13.56MHz(Mifare).
- Dimensions: 140 X 223 X 65 mm.
- Power: DC 9 ~ 30V 1A.
- Display: 128 X 64 Dots LCD, 3 LED.



FX-670 is a high technologic and biometric based identification that can not only works in the standalone mode without need of a host PC, but also easily integrate to PC by using TCP/IP. When FX-670 works in standalone mode, it's just like a single door access control system and provides unique master/slave function to control other FX-670. Besides this, it includes relay to control lock and auxiliary devices along with to exit input and door alarm input. FX-670 is physically stronger than other optic-based fingerprint recognition system in terms of shock-resistance, scratch-resistance, environment-resistance and etc.

Features

- Standalone or can be integrated with FX-870 Multidoor Controller
- Anti Pass back
- Door Bell Support
- Double Badge Control
- Low Power Consumption
- On-Line Viewing Door Status via web browser
- Optional Audio Indicator
- Built in HTTP Server, can use web browser to make system management
- Selectable Time Zone for card+Pin/Lock Release/Exit button
- Support 50 Holidays, Internet Time Server, 40 sets function key setting, 32 departments, 32 designations, 64 time sets, 64 time zones, 32 groups.

Specification

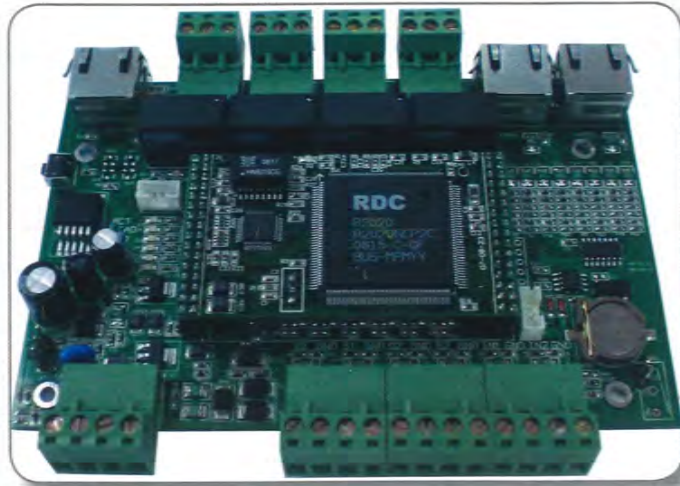
Capacity	5,000 users (Extendable 20,000 users)
Communication	RS-485 → Relay Box (FX-20)
Communication Speed	10/100M, Auto crossing.
Display	128 X 64 dots LCD, 3LED.
Keypad	10 Number key + 6 Function Key + 1 Door Bell
Log Data	32,768 Transactions , 2000 system log
Operating Humidity	5% ~ 95%.
Operating Temperature	0°C ~ 65°C
Output	WG output support, Fire Alarm Input
Power	DC 9-30V 1A.
Registration time	Less than 2.0 sec.
RFID Function	125KHz (EM/TM), 13.55 MHz (Mifare)
Size	145 x 125 x 33 mm.
Storage Humidity	5% ~ 95%.
Storage Temperature	-20°C ~ 55°C
Verification Method	RFID, RFID+Password, Password, Finger, Finger+RFID
Verification time	Less than 1.0 sec.
Weight	220g



READERS



N Series Controller



Features

Communication with FX-50	RS-485
Communication with management software	TCP/IP
Default Reset Button	One
Dimension	143 x 93(113) x 17 mm, (113mm with terminal connector)
Door Sensor (Input)	2 (Circuit Short, Self-Diagnostic support)
Dry Connector (Input):	2 (Circuit Short, Self-Diagnostic support)
Dry Connector (Output):	2(5A/30V Always ON Always OFF)
EM Lock (Output):	2 (5A/30V Always ON Always OFF)
Exit Button (Input):	2 (Circuit Short, Self-Diagnostic support)
Power requirement:	DC 9V~24V
Reader support	2 wiegand readers (thru Rj45)

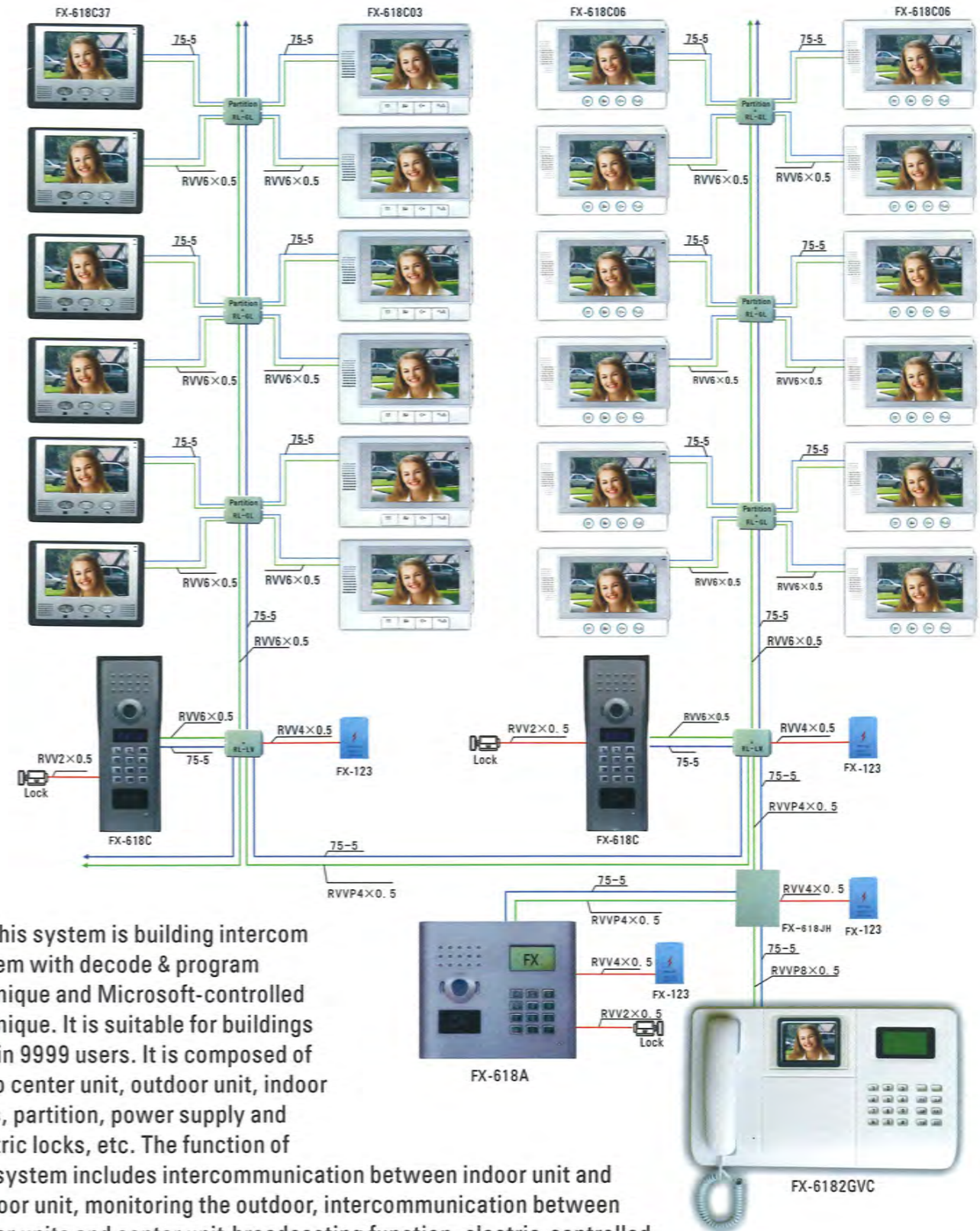
Single door/Bidirectional, or Dual doors/ Single directional access mode provided.
Up to 8 doors per SEMAC are accessible with additional FX-50 relay box.
Apart from Exit Button will be up for emergency status, up to 50 card numbers will be reserved for last
50 particular persons whose card has once access the doors for emergency door-release purpose. While device disconnected with SEMAC.
Built-In HTTP server provides user friendly Web management interface.
Free Management Software package included.
Capacity for card-holder can be option: 20,000Users/60,000 events, or 100,000Users/120,000 events.
12 sets for door release Time Zone authentication provided.
3 PIN codes (Admin/User/Common) and 5 Cards (authentication modes provided).
All Wiegand 26/34 Readers are compatible.
Door Release time interval can be set based on site requirement: 1 ~ 60000Sec.
255 Time Sets, 120 Time Zones (8 days per set and 16 Time Set per day), 255 Groups (8 doors),
100 Holidays can be organized.
Each card holder can be assigned to 4 different groups.
Double-Badge, Anti Pass Back and Anti-Duress design to higher the access security base.
On-Line system upgrade, ease the maintenance job loading.
System alert will be sending immediately by E-Mail.
Diverse Door-release modes provided: Multi-Cards Release (2~3 persons per set, up to 10sets), or Remote-Release or Prima Card-Release.
Built-In Watch Dog hardware protection design in case of system crashed.
Protective ESD/Surge circuit design, secure system lifetime and communication quality.
External Guard Tour and Security devices supported.
IP Camera is supported
Interlocking supported under multi doors access control environment.
Ships with dry connectors for various kind of external alarm devices.
Controllers and the controller box can ship with Tamper Switch in case of any illegal break-ins and intentionally break-downs.
Suitable for large premises, factories, buildings, parking lots, elevator control requirement, school...etc.
Emergency Door-Release: Door can be released from remote site, or by pressing the Emergency Exit Button under emergency situation.

N Series Reader

Web Based
IP 65 Weather Proof
EM / Mifare/HID
Real Time Monitoring
Alarm Alert via E-mail
Particular Common Pin code provides for Anti-Duress protection.
Special Anti Pass Back design
Protectively ESD/Electrical Surge design protects hardware, system safely
30 seconds keypad halting for 3-times illegally pin code entered
Up to 50 Holiday, 32 Group List, 64 Time Zone, 64 Time schedules provided

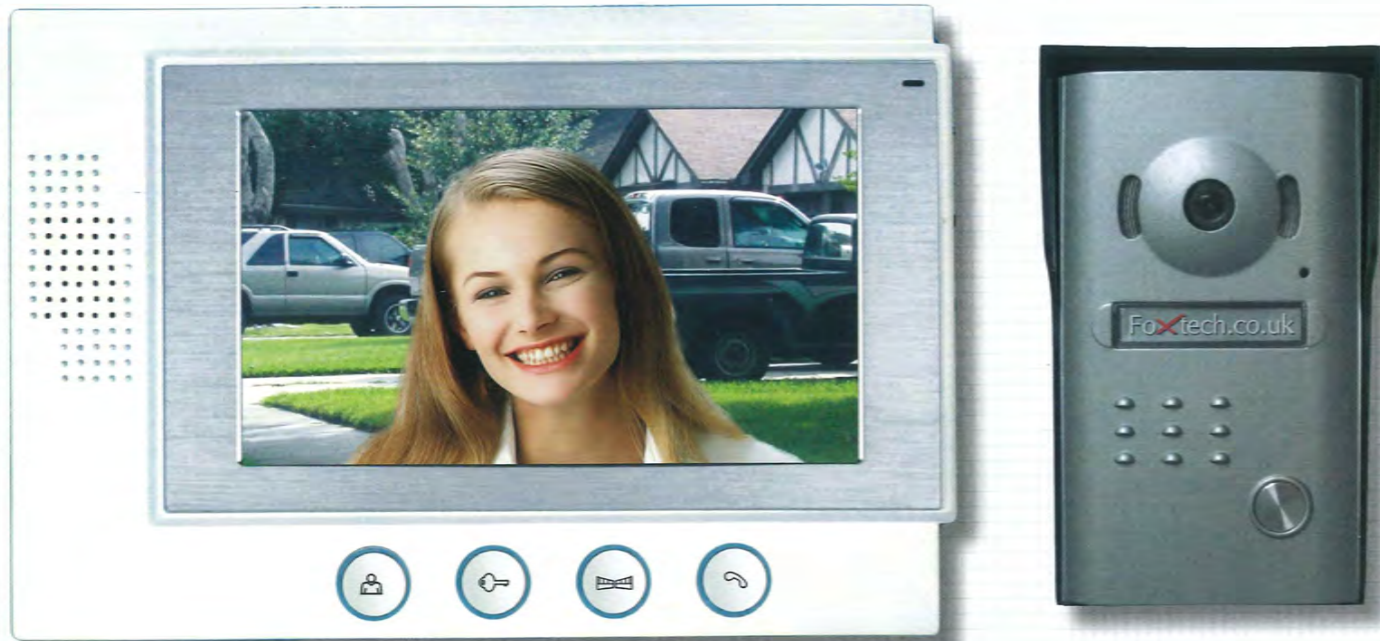


Digital Video Buildings Doorphone System



This system is building intercom system with decode & program technique and Microsoft-controlled technique. It is suitable for buildings within 9999 users. It is composed of video center unit, outdoor unit, indoor units, partition, power supply and electric locks, etc. The function of this system includes intercommunication between indoor unit and outdoor unit, monitoring the outdoor, intercommunication between indoor units and center unit, broadcasting function, electric-controlled unlocking and Internet connection etc. It is a necessity for intelligent property management.





Features :

- ☆ Damage-proof , oxidation-proof outdoor unit .
- ☆ 7"color Image with low power consumption, no radiation and high definition .
- ☆ Hands-free intercommunication.
- ☆ Electronic-controlled lock release function.
- ☆ Monitoring the outdoor .
- ☆ 8 chord melody ring for option .
- ☆ Adjustable volume of melody rings and talking .
- ☆ Brightness and chroma can be adjusted .
- ☆ Enclosed adapter and 15m cable for DIY.
- ☆ Slim-fit designed aluminum alloy panel indoor unit for fashionable and luxurious life .
- ☆ The indoor unit can be hung on the wall .

Performance parameter:

- ☆ Adapter Input voltage: AC100V-240V 60HZ/50HZ
- ☆ Adapter Output voltage/current: DC12V 1200mA
- ☆ Extending Talking time:120s±10%
- ☆ Extending Monitoring time: 40s±10%
- ☆ Working distance: 50m(4×0.5mm2)
- ☆ Power consumption: Static state:0.5W ; talking state:10W
- ☆ Talking time:120s±10%
- ☆ Illumination:2LUX
- ☆ Visual angle: 92° wide angle

Specification

PARAMETER	SPECIFICATION	UNIT
Screen size	7.0(16:9 diagonal)	Inch
Definition	1440(H)×234(V)	dot
Working area	154.08(H)×86.58(V)	mm
Pixel size	0.107(H)×0.370(V)	mm
Screen size	166.0(w) ×100.0(H) ×7.2(D)(typ.)	Mm
OUTDOOR UNIT :		
Working temperature : -20°C~+50°C		
Resolution : shall be not less than 380 lines		
Size of outdoor station:107(w) ×182(H) ×55(D) mm		
INDOOR UNIT		
Working temperature : -10°C~ +40°C		
Relative humidity: 10% ~90%(RH)		
Power consumption:<10w		
Size of indoor unit : 240(w) ×160(H) ×17(D) mm		

AUTOMATIC BARRIER GATE
FXC535Y, FXC655Y



ADVANCED FEATURES

- Compact design, attractive appearance, safe and reliable performance.
- Self-lock electromechanical gearmotor.
- Built-in control panel.
- Adjustable balancing system.
- Auto-stop function if hits obstruction.
- Folding or Fencing arm is available.
- Built-in release system in case of power failure.
- Connections for ticket dispenser, photocell, alarm lamp, loop detector, etc

TECHNICAL DATA

Model	FXC535Y	FXC655Y
Opening Time	3.5sec	5.5sec
Arm Length	3m~5m (standard)	5m~6m(standard)
Power Supply	220~240V	
Motor Speed	1400r/min	
Motor Output Power	180W	
Working Temperature	-20°C~+50°C	

AUTOMATIC SLIDING GATE
FXL400, FXL400Y



ADVANCED FEATURES

- Build-in control board is optional
- Auto-reverse in the event of obstruction
- Auto-close time 0-45 seconds adjustable
- Manual release key in case of power failure
- Terminals for button switch, photocell, lamp, etc.
- Easy installation, full fitting accessories are provided in motor kits

TECHNICAL DATA

Model	FXL400	FXL400Y
Motor Power	AC motor 160/190W	
Power Supply	220~240V, 110~120V	
Output Torque	14N*m	
Gate Speed	12m/min	
Limit Switch	Mechanical or Magnetic limit switch	
Remote Control	Rolling code 433.92mHz	
Control Board	No	Yes
Max. Gate Weight	600KG	

AUTOMATIC SWING GATE
FXW207A, FXW207U



ADVANCED FEATURES

- Self-locking and reversible electromechanical gearmotor
- Body in die-cast aluminum and high quality painted
- Adjustable support brackets
- Built-in micro switches for gate opening arrest
- Opening angle up to 105 degree
- One model only for left and right hand
- Overheat or over-current protection
- Time-delay protection
- DC12V electric lock
- Emergency release key in case of power failure
- Control panel are available to photocell, alarm lamp & security device
- Quick installation, full fitting accessories are provided in motor kits

TECHNICAL DATA

Model	FXW207A	FXW207U
Motor Power	AC 110W	AC 100W
Power Supply	220~240V	110~120V
Opening Time	22sec	
Max. Thrust	1500N	
Working Angle	90° to 105°	
Remote Control	Rolling code 433.92mHz	
Max. Length Per Leaf	2.5m	
Max. Weight Per Leaf	200KG	

WIRELESS ALARM SYSTEM

GSM/GPRS Wireless Auto-dial Alarm System FX-0503G

Usage

Ideal for house, company, warehouse etc. where anti-theft is needed. The system will alarm sharply when someone intrudes illegally in alarm status, meanwhile 6 groups of telephone numbers stored in the main unit will be dialed automatically.



FEATURES :

1. With GSM wireless network, alarm signal can be sent any distance.
2. By the preset 6 groups of telephone numbers, this system can make alarm call to householder, security guard and police station.
3. Voice from monitor area can be heard clearly by phone.
4. Arm, disarm or send emergency alarm signal by magnetic code controller . This system also allows to arm, disarm and wireless voice monitor by phone.
5. Includes two wireless siren with light. When alarm is activated, sharp siren with light will frighten away the thief, and the main unit can be put in a hidden place for protection.
6. settings and stored data will not be lost after power failure.
7. Maximally 38 sensors can be added to this system .
8. Simple installation and operation.
9. magnetic code controller is equipped to arm the system easily.when alarm is activated , the host can enter correct password within the limited time to disarm the system .

TECHNICAL DATA:
Main unit:
Input volts: DC 12V 1000mA
Working current: <270 mA
Standby current:<60mA
Standby time: >18 hours
Receive frequency: 433.5MHZ-434MHZ

MAGNETIC CODE CONTROLLER
Input volts: DC4.5V (AAAx3)
Standby current: <10 uA
Transmission current: <5mA
Transmission frequency: 433.5MHZ-434MHZ
Transmission distance: >50m (open area)

WIRELESS SIREN (INDOOR)
Power volts: DC4.5V (LR6x3)
Standby current: <600uA
Alarm current: <170mA
Alarm volume: >95 dB(at 0.5m)
Receive frequency: 433.5MHZ-434MHZ
Low voltage indication: <3.1V+ 0.1V

INFRARED SENSOR
Input volts: DC4.5V (AAAx3)
Standby current: <0.1mA
Transmission current: <8mA
Transmission frequency: 433.5MHZ-434MHZ
Inductive distance: >5m (open area)
Low voltage indication: <3.1V+0.1V

MAGNET SENSOR
Input volts: DC4.5V (LR44x3)
Standby current: <10 uA
Transmission current: <8mA
Transmission frequency: 433.5MHZ-434MHZ
Transmission distance: >50m (open area)

WIRELESS SIREN (OUTDOOR)
Power volts: DC6V (LR6x4)
Standby current: <650uA
Alarm current: <200mA
Alarm volume: >105 dB(at 0.5m)
Receive frequency: 433.5MHZ-434MHZ
Low voltage indication: <3.6V+ 0.1V

IP BASED WIRELESS SECURITY SYSTEMS



- IP-based wireless security & home automation system.
- Remote control over Internet, telephone or cellular.
- Computer interface for downloading & uploading.
- System contains a maximum of 128 burglar zones plus 64 fire zones.
- Interactive programming with 16-character x 2 LCD display.
- Detailed 512 events log with time tag.
- Accommodates 16 X-10 power switches for home automation.
- Receiving RF signal strength indication and jamming detection.
- Hopping-code remote controller for high security.
- Built-in voice dialer stores up to 10 phone numbers, plus 2 CMS data links.
- Optional GSM module for supporting communication link
- Up to 10 user codes are available.
- Hands-free speakerphone, 2-way voice communication for emergency.
- Auto-reporting to inform parents when children arrive or leave home.
- Sensors are fully supervised to keep the system more secure.
- Radio repeater available to extend range.
- Wireless temperature & humidity sensor with programmable high/low alarm limit.
- Emergency alarm and monitoring for the elderly.

