



COMPANY

PROFILE



Alitaliya

REF & HEATERS DEVICES TRADING EST.

ABOUT US

Alitaliya was established in 1996 in the united arab emirates, as an expansion plan of ghazi al refai & sons group of companies.

The experience of more than 65 years as importers & manufacturers of thermal energy products solutions represented in steam generators & hot water boilers, light & heavy oil, lpg & natural gas burners, for all kinds of industries, foodstuff, residential hotels facilities ,petroleum & gas refineries, laundries, building constructions and many other various technical and industrial applications where the heat energy is requested.

Our ranges of products are complying with latest european norms and approved by famous Certifying authorities.

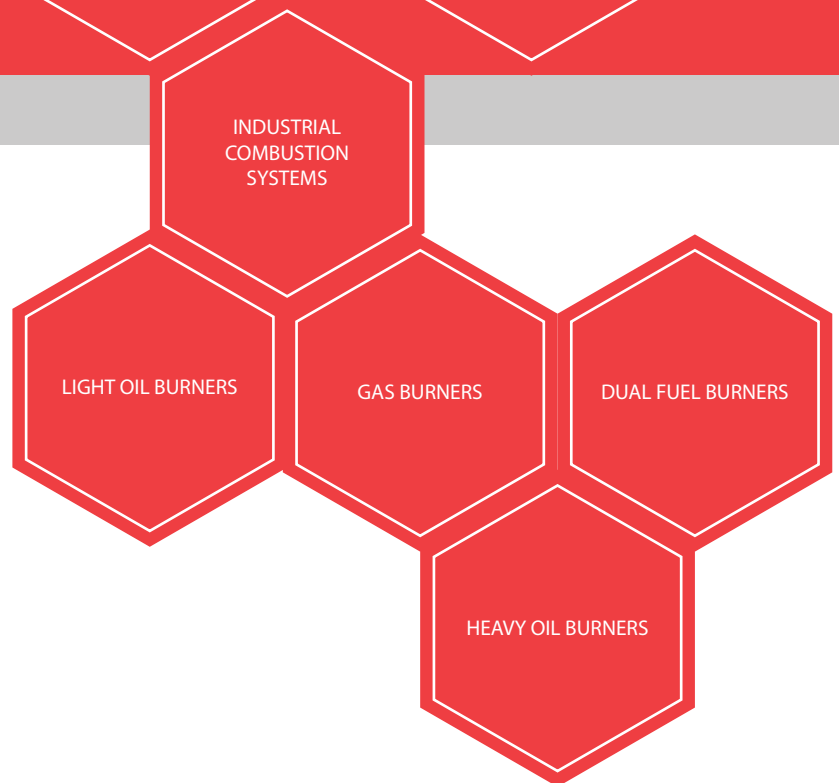
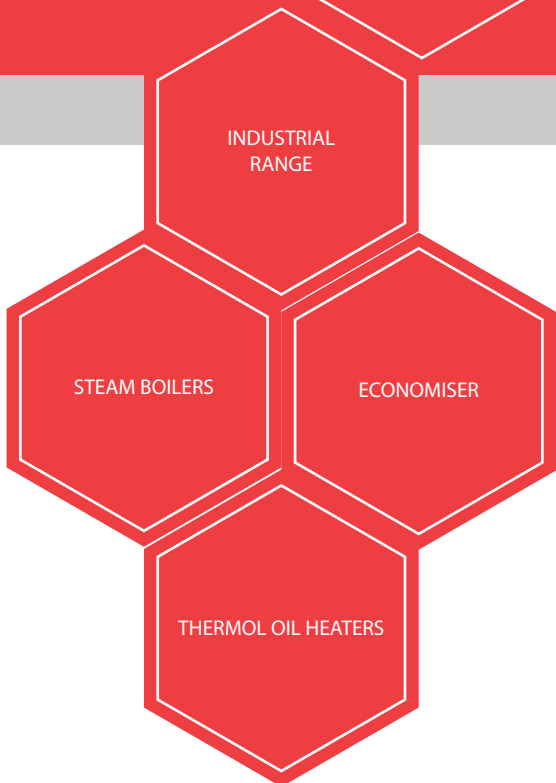
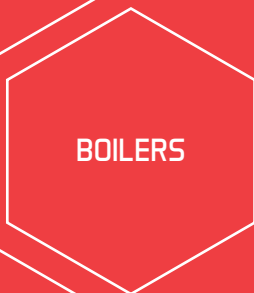
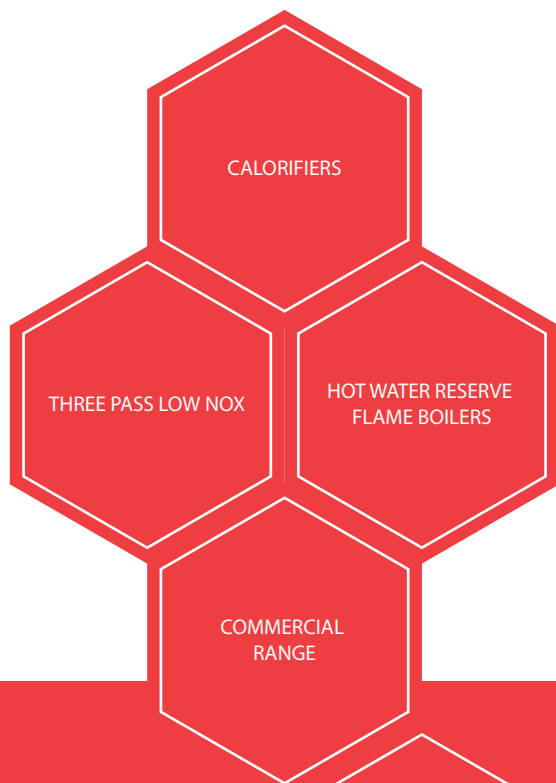
MISSION:

Our objective is to provide to our valued clients high quality products & services for more demanding areas of a thermal power energy, for Industrial applications, Residential, hospitality, and in many other various fields' purposes, compatible.

Products & Services :

- Steam Generator Boilers
- Steam Boilers Renting Services
- Hot Water boilers
- Thermal Fluid heaters
- Light Oil, Heavy Oil, LPG & Natural Gas Burners
- Arabic Bread ovens burners
- Powder Coating Ovens burners
- Solar Central Heating Systems
- Spare Parts for all our range of products

OUR PRODUCTS



INDUSTRIAL RANGE

ACCESSORIES

ASB

INDUSTRIAL RANGE

HIGH PRESSURE THREE PASS STEAM BOILER



General Description

Alitaliya steam boiler model ASB is a genuine three pass wet back horizontal fire tube boiler, designed in accordance with the ASME codes and produced especially for industrial plants. The ASB boiler is manufactured incorporating the latest technology, and provide excellent performance, in order to satisfy the special requirements of reliability, endurance and control.

The ASB boiler is generously sized with low heat release criteria and large water volume, giving full protection to the boiler against thermal shock and ensuring excellent steam quality and dryness.

The boiler is of a conventional wet back design with a fully submerged rear combustion chamber giving full protection to tubes and tube plates allowing full flexibility of the vessel during the combustion process. The large furnace ensures complete combustion of both liquid and gaseous fuels.

The flame passes through the furnace and combustion gases are carried into the rear gas reversal chamber, which is completely submerged. From this chamber, the hot gases pass into the second pass tubes. The gases then travel through the second pass tubes to the front of the boiler entering the front smoke box where they enter the third pass tubes and travel to the rear smoke box and exhaust outlet.

The boiler comes as a complete package and is easily installed on a level base without need for further on site structural requirements. The boiler should then be connected to suitable power, water and fuel supplies as detailed in the accompanying data sheet.

Chimney and blow down connection sizes are also to be found in this document. Facilities for cleaning and inspection to the fireside of the boiler are gained via easy access opening doors.

All materials used are certified to the latest European codes.

PRESSURE VESSEL

- Conventional three pass wet back furnace with a fully submerged rear combustion chamber incorporating an access door for fireside access to the rear combustion chamber to facilitate inspection and cleaning;
- Tube plates, subsequently drilled and reamed for the smoke tubes which are welded on professional bases.
- Shell with welded flange attachments for the fixing of the operating instruments and inspection doors;
- Large furnace designed for low heat release, incorporating possible hot rimmed design Fox type joints.
- Smoke tubes made in carbon steel, without Turbolators.

FRONT SMOKE CHAMBER

Manufactured from steel sheet and thermally insulated, Front doors are fitted to the boiler by double pin joint hinges and can be opened without removing the burner; in this way the cleaning operations can be carried out by a single operator.

BACK SMOKE CHAMBER

Manufactured from steel sheet and thermally insulated. Two insulated doors are fitted to the boiler by double pin joint hinges for smoke tube cleaning. An access door is incorporated for fireside access to the rear combustion chamber to facilitate inspection and cleaning. The inspection doors also incorporate an inspection port for viewing.

INSULATION

The boiler is insulated with rock wool slabs and cladding

BASEMENT

Boiler service: basement built in carbon steel draw piece in order to guarantee support to the whole vessel.

VALVES

Qty	Description
1	Main steam stop valve
1	Feed water isolating valves
1	Feed water non-return valves
1	Quick shut-off blow-down stop valve
1	Blow-down isolating valve

SAFETY VALVES

Qty	Description
2	Spring safety valves according to European standards – trip pressure as per data sheet

SETTING AND CONTROL EQUIPMENTS

Qty	Description
1	McDonnell Miller water level controller, fully electronic
1	Dial manometer and check bridle according to European standards
1	Limit pressure switch
1	Safety pressure switch, manual reset

CONTROL PANEL

The electrical wiring complies with the strictest safety rules, and is connected to a single centralised control board (protection level IP 55), all the components are supplied from Telemecanique, Schneider Electric and OMRON for the timer relays

Qty	Description
1	Electric control panel composed by: mains isolator, feed pump isolator, burner switch, operating level relay, low level relay, extra low level relay, high pressure reset switch with visual alarms lamp, low level reset switch with visual alarms lamp, extra low level reset switch with visual alarms lamp, alarm siren

WATER LEVEL CONTROLS

The water level control device consists of a part sited in the control panel (electronic relays) and of probes of differing lengths immersed in the barrel and boiler shell. Operation of the system provides for automatic pump start and stop and burner stop at low water level.

Qty	Description
2	Level control conductivity probes connected to a single control relay
1	Low level safety conductivity robe, connected to a distinct control relay
1	Extra-low level safety conductivity probe, connected to a distinct control relay

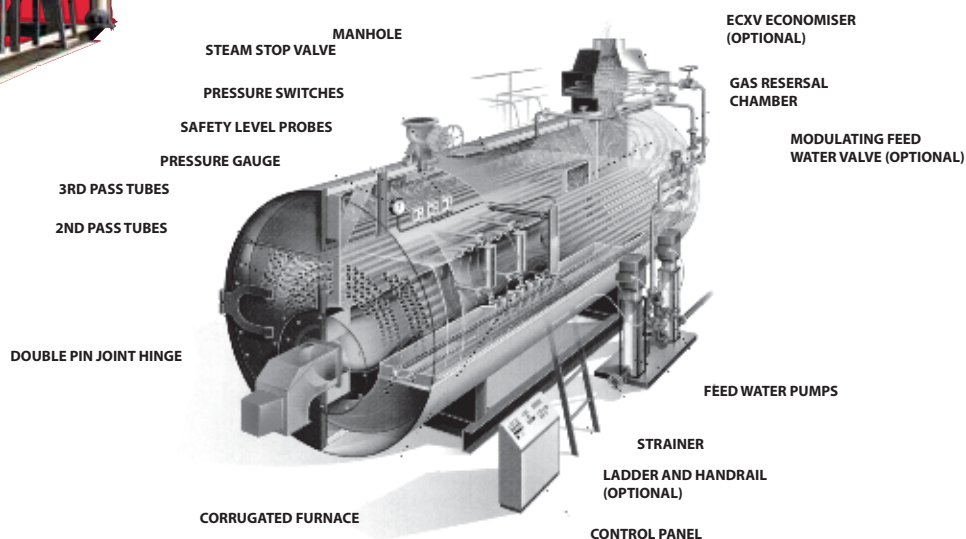
FEED WATER PUMPS

The feed water pumps are fitted to the boiler support brackets and connected to the boiler feed water valve in suitably sized steel pipe work.

Qty	Description
1	Vertical centrifugal pumps with on/off control to suit the boiler working pressure and rating – pumps characteristics as per data sheet



STEAM BOILERS



Model	Heat Output	Heat Input	Steam Production	Working P min./max.		Fuel consumption		
				8 Bar	12 Bar	Natural Gas	Diesel oil	Heavy oil
	KW	KW	kg/h	Bar	Bar	st Nm3/h	kg/h	kg/h
ASB 300	211	230	300	6/8.1	8/11,5	23	19.62	23.82
ASB 500	352	384	500	6/8.2	8/11,6	38.33	32.70	39.70
ASB 1000	704	769	1000	6/8.3	8/11,7	76.67	65.39	79.40
ASB 2000	1408	1538	2000	6/8.4	8/11,8	153.33	130.78	158.81
ASB 3000	2112	2308	3000	6/8.5	8/11,9	230	196.18	238.21
ASB 4000	2816	3077	4000	6/8.6	8/11,10	306.67	261.57	317.62
ASB 5000	3521	3846	5000	6/8.7	8/11,11	383.33	326.96	397.02
ASB 6000	4225	4615	6000	6/8.8	8/11,12	460.00	392.35	476.43
ASB 7000	4929	5384	7000	6/8.9	8/11,13	536.67	457.75	555.83
ASB 8000	5633	6154	8000	6/8.10	8/11,14	613.33	523.14	635.24
ASB 9000	6338	6924	9000	6/8.11	8/11,15	690.00	588.53	714.64
ASB 10000	7042	7693	10000	6/8.12	8/11,16	766.67	653.92	794.05
ASB 11000	7746	8462	11000	6/8.13	8/11,17	843.33	719.31	873.45
ASB 12000	8450	9231	12000	6/8.14	8/11,18	920.00	784.71	952.86



BURNERS

**For the fuels of today and tomorrow,
Riello Limited has the perfect match**

For burners from 10kW to 30MW, Riello has the perfect match for residential, commercial, industrial and process applications. With over 80 years of experience in design and manufacture, coupled with leading technology and flexible burner design.

GAS BURNER



Single stage gas burner
GS



Two Stage Gas Burner
GAS 3/2 UPTO 10/2



Modulating gas burner
RS 1200

LIGHT OIL BURNER



Single Stage Light Oil Burner



Two stage light oil burner



Modulating light oil burner

HEAVY OIL BURNER



Heavy oil burner

DUAL FUEL BURNER



Dual Fuel burner

SPARE PARTS

Control Box

(Siemens)



Fuel Pumps

(Suntec)



Transformer

(Fida)



Nozzles

(Monarch)



Filters

(Guiliani)



Steam Accessories

(ARI Armaturer)



Pressure Switch & Sensor

(Danfoss)



Ignition Electrodes



BOILER MAINTENANCE

TECHINICAL SERVICES

Boiler Problem ?

We are here to help.....

Supply , Installation and maintenance of all types comercial and industrial boilers.

Services.....

- Boilers Overhauling



- Boilers Commissioning & Starting up



- Annual Maintenance Contract



- Boilers Control Pannel



- flue Gas Analysis



- Smoke Tube Cleaning & Chemical Flushing



- Boilers Accessory Calibration



- Fabrication Work For Chimney
- Retubing For Boiler
- Steam Line Work
- Boiler Renting
- Steam Accumulator
- Preheated Oil Tank
- Atmospheric Deaerator

BURNER MAINTENANCE

TECHINICAL SERVICES

Burner Problem ?

We are here to help.....

Supply , Installation and maintence of all types comercial and industrial burners.

Services.....

• Burner Installation



• Burner Commissioning & Starting Up



- Burner Maintenance & Repairing
- Burner Spare Parts
- Burner General Overhauling

REFERENCES



REFERENCES



REFERENCES



REFERENCES



REFERENCES





REF & HEATERS DEVICES TRADING EST.

P.O. Box : 28095, Sharjah, U.A.E
Tel : +971 6 533 5880
Fax : +971 6 533 4880
E-mail : sales@alitaliya.com